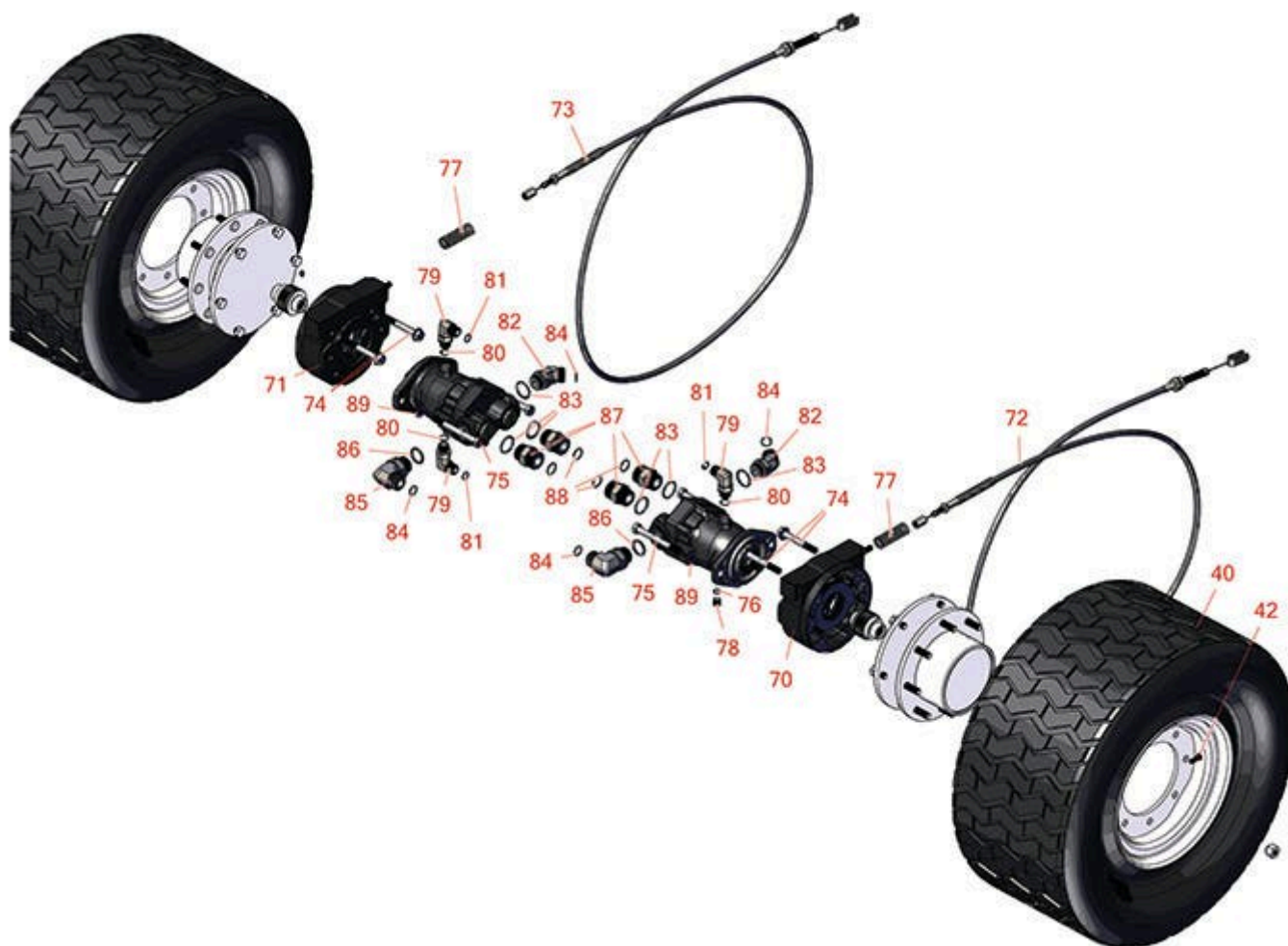




Replaces Toro Groundsmaster 4500-D Parts

Rotary Mower - Model 30856
Front Drive and Brake



All original equipment manufacturers names and part numbers are used for identification purposes only, and we are in no way implying that our products are original equipment parts. Prices subject to change without notice.



Replaces Toro Groundsmaster 4500-D Parts

Rotary Mower - Model 30856
Front Drive and Brake



Item No	R&R Part No.	OEM Part No.	Description	Qty Req	Price Each	Order Quantity
---------	--------------	--------------	-------------	---------	------------	----------------

Tires & Wheels

40	RCT5293E6		Tire - 29x14.00-15 Nhs (6 Ply) Carlisle Ultra Trac	2	448.45	
<i>Detail Description: The Carlisle Ultra Trac tire is the ideal choice for specialized applications that prioritize high flotation and turf preservation. With its wide, flat footprint, reduced void in the tread, low ground pressure, good traction, and even pressure distribution, this tire delivers exceptional turf protection and performance. Whether you're maintaining golf courses or engaging in grounds maintenance, the Carlisle Ultra Trac tire ensures optimal turf preservation and reliable operation.:</i>						

42	R232-27	232-27, 232-31	Stem - Valve w/ Cap	2	4.40	
----	---------	-------------------	---------------------	---	------	--

Other Parts Available

70	R100-3070-03	100-3070-03	Brake Assy - LH	1	618.10	
71	R100-3069-03	100-3069-03	Brake Assy - RH	1	618.10	
72	R92-7530	92-7530	Brake Cable Assy - LH	1	92.70	
73	R92-7529	92-7529	Brake Cable Assy - RH	1	92.70	
74	R33106-090	33106-090	Bolt - M12-1.75 x 90 Fl Hex HD Gr 8.8	4	4.80	
75	R33116-120	33116-120	Bolt - M12-1.75 x 120mm Hx HD	4	8.95	
76	R237-42	237-42, 31-4160	O-Ring	7	0.84	
77	R94-3088	94-3088	Spring - Compression	2	6.05	
78	R353-989	353-989	Plug - Hex - Hollow	2	8.95	
79	R340-98	340-98	Hydraulic Fitting	3	16.40	
80	R237-79	237-79	O-Ring	3	1.60	
81	R237-30	23-6320, 237-30	O-Ring - Seal	3	0.82	

All original equipment manufacturers names and part numbers are used for identification purposes only, and we are in no way implying that our products are original equipment parts. Prices subject to change without notice.



Replaces Toro Groundsmaster 4500-D Parts

*Rotary Mower - Model 30856
Front Drive and Brake*



Item No	R&R Part No.	OEM Part No.	Description	Qty Req	Price Each	Order Quantity
82	R100-5530	100-5530, 98-0657	Hydraulic Fitting - 45 Deg	2	56.05	
83	R237-146	237-146, 340-146	O-Ring	6	1.55	
84	R237-58	237-58	O-Ring	4	0.82	
85	R340-142	340-142, 95-1692	Hydraulic Fitting - 90 Deg	4	37.90	
86	R237-81	237-81, 237.81, 327-81	O-Ring	2	2.45	
87	R104-3797	104-3797	Hydraulic Fitting - Striaight	4	20.90	
88	R340-65	340-65	O-Ring	4	0.90	
89	R3256-26	01-166-0540, 01-166-0820, 17-2530, 24-13-BD, 30-8570, 3256-26, 356206, 48-9390	Washer - 1/2 in	4	0.43	

All original equipment manufacturers names and part numbers are used for identification purposes only, and we are in no way implying that our products are original equipment parts. Prices subject to change without notice.