

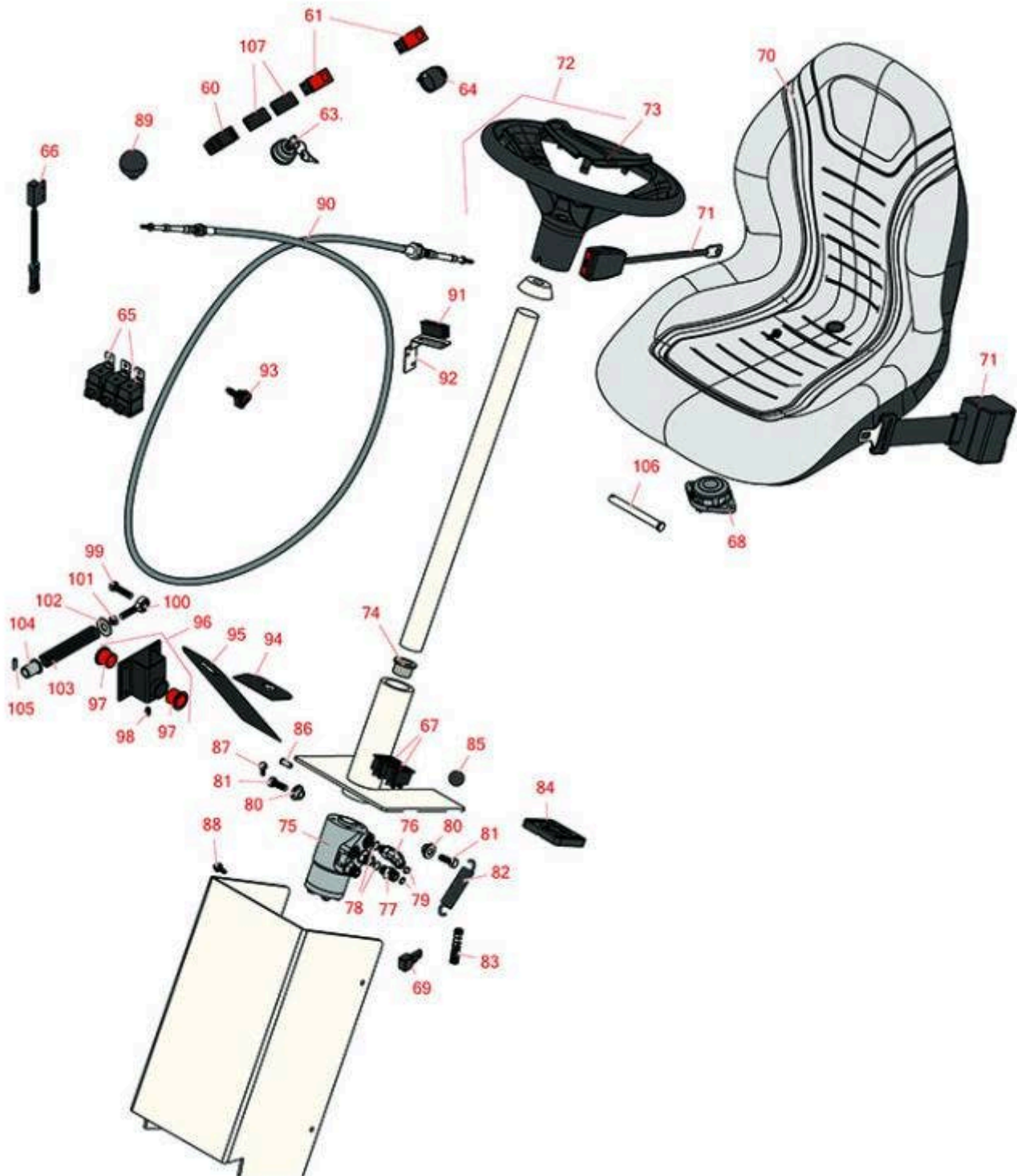


Replaces Toro Groundsmaster 4100-D

Parts

Rotary Mower - Model 30413

Steering & Seat



All original equipment manufacturers names and part numbers are used for identification purposes only, and we are in no way implying that our products are original equipment parts. Prices subject to change without notice.



Replaces Toro Groundsmaster 4100-D Parts

Rotary Mower - Model 30413
Steering & Seat



Item No	R&R Part No.	OEM Part No.	Description	Qty Req	Price Each	Order Quantity
---------	--------------	--------------	-------------	---------	------------	----------------

Gauges & Controls

60	R95-8999	95-8999	Switch - Headlight	1	28.80	
61	R100-8072	100-8072	Switch	2	58.05	
63	R104-2541	104-2541, 88-9830	Switch - Key 6 Lead 5/8 Mt.	1	18.80	
64	R80-9330	80-9330	Alarm - Audio	1	60.30	
65	R99-7430	99-7430	Relay - 30 Amp	3	15.05	
66	R100-1270	100-1270	Sensor - Proximity	1	74.85	
67	R100-8071	100-8071	Lamp - Warning	2	22.35	
68	R92-6282	62-6282, 92-6282	Switch - Kill - Seat	1	18.95	
69	R100-4918	100-4818, 100-4918	Diode	1	21.70	

Other Parts Available

70	RMXB200GY	100-3187, 104-4620, 104-7620, 21-4880, 351-59, 351-76, 49-8130, 63-9410, 66-5400, 75-9190, 750105, 92-6280, MXB200GY	Milsco Seat XB200 - Grey	1	191.30	
----	------------------	--	--------------------------	---	---------------	--

Tech Note: This seat will not accept seat belts:

71	R150848	100-4928, 110-0413, 110-9720, 95-8910	Belt-Seat	1	194.60	
----	----------------	--	-----------	---	---------------	--

All original equipment manufacturers names and part numbers are used for identification purposes only, and we are in no way implying that our products are original equipment parts. Prices subject to change without notice.



Replaces Toro Groundsmaster 4100-D Parts

Rotary Mower - Model 30413
Steering & Seat



Item No	R&R Part No.	OEM Part No.	Description	Qty Req	Price Each	Order Quantity
72	R98-1471	93-5212, 94-3500, 98-1471	Steering Wheel Assy - 14 in Incl Cap	1	92.30	
73	R98-1468	98-1468	Cap - 14" Steering Wheel	1	13.15	
74	R256-132	256-132	Bushing - Flangd	2	3.85	
75	R130-7944	104-2213, 114-5074, 130-7944	Valve- Control - Steering	1	700.30	
76	R340-77	340-100, 340-77, 95-7889	Hydraulic Fitting	1	15.85	
77	R340-2	340-2, 60-1920	Hydraulic Fitting - Striaght	3	6.50	
78	R237-22	107-8844, 237-22, 237-78	O-Ring	4	0.62	
79	R237-42	237-42, 31-4160	O-Ring	4	0.80	
80	R93-5988	93-5204, 93-5988	Hub - Pivot	2	17.30	
81	R323-6	01-150-0010, 01-178-0608, 20-47-AD, 20-47-AGD, 3224-2, 323-6, 49-3510, 908034P, 908332	Bolt - Hex HD 3/8-16 x 1 GR5 YZ	2	0.59	
82	R93-5985	93-5985	Spring - Extension	1	12.50	
83	R71-8310	71-8310	Spring - Compression	1	3.55	

All original equipment manufacturers names and part numbers are used for identification purposes only, and we are in no way implying that our products are original equipment parts. Prices subject to change without notice.



Replaces Toro Groundsmaster 4100-D Parts

*Rotary Mower - Model 30413
Steering & Seat*



Item No	R&R Part No.	OEM Part No.	Description	Qty Req	Price Each	Order Quantity
84	R93-7629	27-7570, 27-7580, 49-6170, 93-7629, 93-8743	Rubber Foot Pad - Brake	1	6.45	
85	R93-5312	93-5312	Knob	1	5.30	
86	R32148-6	32148-6	Insert - Nut	6	1.55	
87	R33103-016	33103-016, 93-5919	Screw-HHF	4	4.65	
88	R3234-33	3234-33	Bolt - 1/4-20 x 3/4 Serr Hex Flanged	10	0.51	
89	R233-48	233-24, 233-48, 30-3370	Knob	1	6.50	
90	R104-7547	104-7547	Cable - Throttle	1	115.15	
91	R58-4250	58-4250, 99-3497	Catch - Magnetic	1	25.80	
92	R104-7545	104-7545	Bracket - Latch	1	18.65	
93	R95-9648	95-9648	Knob - 3/8-16 Thread	1	12.45	
94	R93-5368	93-5368	Abrasive - Pedal	1	6.05	
95	R93-5347	93-5347	Abrasive - Pedal	1	5.85	
96	R104-3565	104-3565	Pedal Bracket Assy	1	130.10	
97	R256-10	256-10	Bushing - Flanged	2	5.35	

All original equipment manufacturers names and part numbers are used for identification purposes only, and we are in no way implying that our products are original equipment parts. Prices subject to change without notice.



Replaces Toro Groundsmaster 4100-D Parts

Rotary Mower - Model 30413
Steering & Seat



Item No	R&R Part No.	OEM Part No.	Description	Qty Req	Price Each	Order Quantity
98	R302-5	21-6010, 302-11, 302-37, 302-47, 302-5, 302-57, 302-58, 302-6, 31-0300, 32-9660, 60-0800, 62-3880, 92-4181	Fitting - Grease	1	0.27	
99	R323-8	01-150-0060, 01-178-0612, 20-49-AD, 20-49-AGD, 323-8, 3273-41, 908036P	Bolt - Hex HD 3/8-16 x 1-1/2 GR8	0	1.50	
100	R2411-36	2411-36, R2411-36	Rod End	0	24.95	
101	R3220-3	01-191-0624, 3220-3, 3290-149	Nut - Jam Ball Joint	0	0.24	
102	R453013	01-166-0140, 01-166-0700, 3256-5, 80-4850	Washer - Flat 7/16	0	0.26	
103	R84-9100	84-9100	Spring	1	7.95	
104	R92-7610	92-7610	Retainer-Spring	1	16.20	
105	R32121-11	32121-11	Pin - Roll 1/4 x 3/4	1	0.34	
106	R283-83	283-83, 42194, 93-5343	Pin - Clevis	1	5.15	
107	R99-7420	100-8493, 99-7420	Plug-Hole	2	4.55	

All original equipment manufacturers names and part numbers are used for identification purposes only, and we are in no way implying that our products are original equipment parts. Prices subject to change without notice.



Replaces Toro Groundsmaster 4100-D Parts

*Rotary Mower - Model 30413
Steering & Seat*



All original equipment manufacturers names and part numbers are used for identification purposes only, and we are in no way implying that our products are original equipment parts. Prices subject to change without notice.