

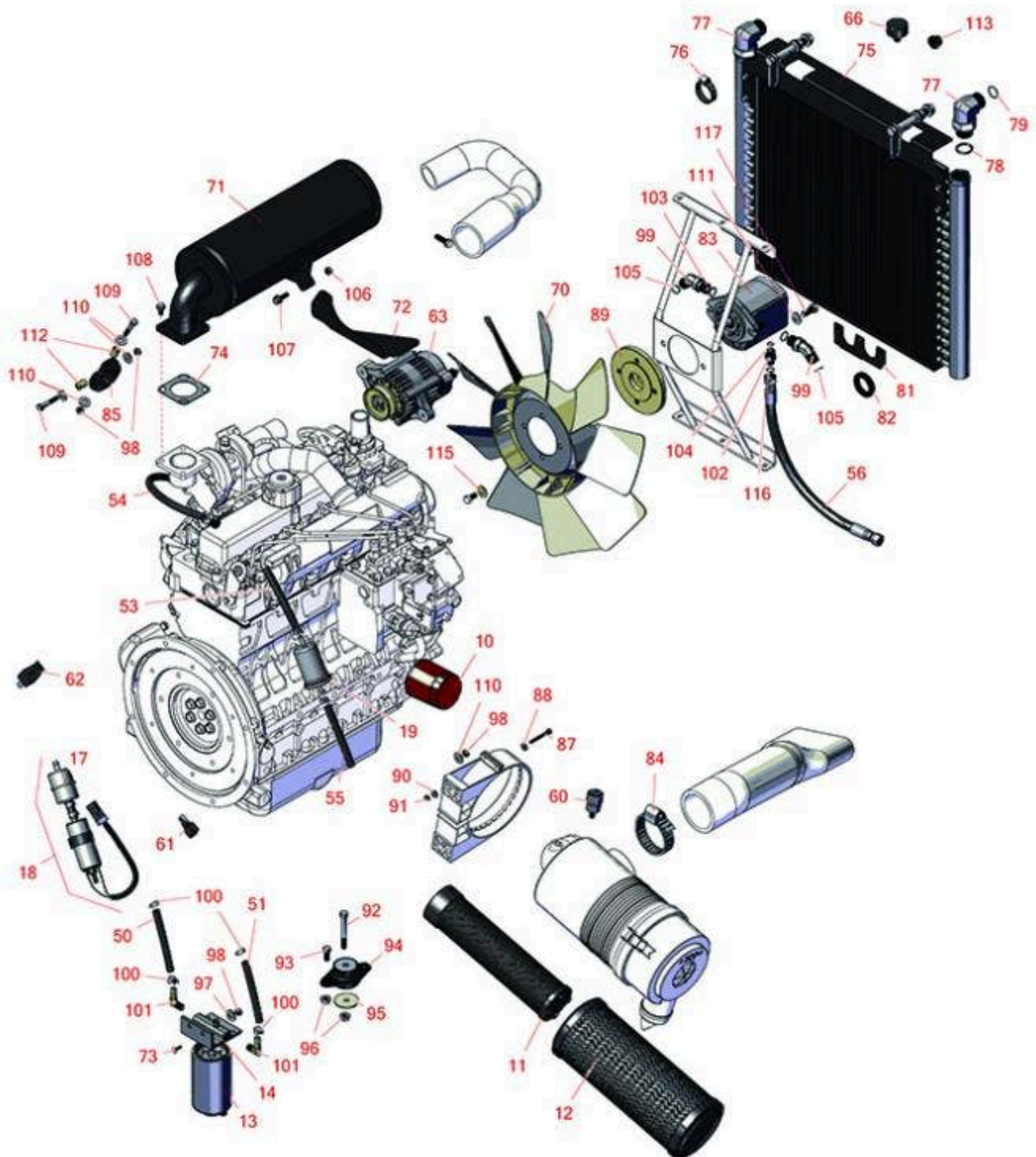


# Replaces Toro Groundsmaster 4100-D

## Parts

Rotary Mower - Model 30413

Engine



All original equipment manufacturers names and part numbers are used for identification purposes only, and we are in no way implying that our products are original equipment parts. Prices subject to change without notice.



# Replaces Toro Groundsmaster 4100-D

## Parts

Rotary Mower - Model 30413  
Engine



Item No	R&R Part No.	OEM Part No.	Description	Qty Req	Price Each	Order Quantity
---------	--------------	--------------	-------------	---------	------------	----------------

### Filters

10	<b>RX7000074035</b>	104-5169	Kubota Filter - Oil	1	<b>9.85</b>	
11	<b>R108-3816</b>	104-4261, 108-3816	Baldwin Air Filter	1	<b>30.35</b>	
12	<b>R108-3814</b>	104-4260, 108-3814	Baldwin Air Filter	1	<b>38.95</b>	
13	<b>R110-9049</b>	110-9049	Donaldson Fuel Filter - Spin On	1	<b>17.75</b>	
14	<b>R110-9044</b>	110-9044	Donaldson Water/Fuel Seperator Assy	1	<b>41.50</b>	
17	<b>RRF10534</b>	112-7836, RR ONLY, RRONLY	SilverGuard Fuel Filter - Inline	1	<b>5.95</b>	
17	<b>R112-7836</b>	112-7836, RR ONLY	Baldwin Fuel Filter - in Line	1	<b>6.90</b>	
18	<b>R110-8806</b>	110-8806	Fuel Pump and Filter Assy	1	<b>165.40</b>	
19	<b>RX1258143012</b>	108-3828, 98-7612	Kubota Fuel Filter	1	<b>4.75</b>	

### Hoses

50	<b>R109-0309</b>	109-0309	Hose-Fuel	1	<b>11.70</b>	
51	<b>R110-3256</b>	110-3256	Hose - Fuel	1	<b>6.95</b>	
53	<b>R110-3257</b>	110-3257, 63-7630	Hose-Fuel	1	<b>8.90</b>	
54	<b>R110-3254</b>	110-3254, 75-4706	Hose-Fuel	1	<b>12.05</b>	
55	<b>R109-0274</b>	109-0274	Hose- Fuel	1	<b>7.50</b>	
56	<b>R115-3756</b>	115-3756	Hydraulic Hose Assy	1	<b>30.90</b>	

### Gauges & Controls

All original equipment manufacturers names and part numbers are used for identification purposes only, and we are in no way implying that our products are original equipment parts. Prices subject to change without notice.



# Replaces Toro Groundsmaster 4100-D

## Parts

Rotary Mower - Model 30413  
Engine



Item No	R&R Part No.	OEM Part No.	Description	Qty Req	Price Each	Order Quantity
60	<b>R104-3563</b>	104-3563	Indicator - Service	1	<b>22.55</b>	
61	<b>R100-4918</b>	100-4818, 100-4918	Diode	1	<b>21.70</b>	
62	<b>R99-7435</b>	99-7435	Relay - 70 Amp	1	<b>21.90</b>	
63	<b>R98-7693</b>	107-0145, 98-7693	Alternator Assy	1	<b>370.15</b>	
66	<b>R68-6150</b>	58-9070, 68-6150	Breather	1	<b>6.80</b>	
<b>Other Parts Available</b>						
70	<b>R114-3825</b>	114-3825	Fan	1	<b>227.35</b>	
71	<b>R151205</b>	114-3849, 99-5424	Muffler	1	<b>408.55</b>	
72	<b>R112-9113-03</b>	112-9113-03	Mount - Exhaust	1	<b>21.05</b>	
73	<b>R321-4</b>	01-150-1030, 01-178-0406, 20-3-AGD, 321-4, 3222-1	Bolt - Hex HD 1/4-20 x 3/4	2	<b>0.52</b>	
74	<b>RXT007016420</b>	100-9333	Kubota Gasket - Muffler Na	1	<b>3.36</b>	
75	<b>R150955</b>	110-0485	Cooler - Hydraulic Oil	1	<b>600.55</b>	
76	<b>R2412-111</b>	2412-111	Clamp - Hose - Worm	4	<b>4.15</b>	
77	<b>R104-3796</b>	104-3796, 104-8315	Hydraulic Fitting - 90 Deg	2	<b>97.55</b>	
78	<b>R237-81</b>	237-81, 237.81, 327-81	O-Ring	2	<b>2.30</b>	
79	<b>R340-65</b>	340-65	O-Ring	2	<b>0.86</b>	

All original equipment manufacturers names and part numbers are used for identification purposes only, and we are in no way implying that our products are original equipment parts. Prices subject to change without notice.



# Replaces Toro Groundsmaster 4100-D

## Parts

Rotary Mower - Model 30413  
Engine



Item No	R&R Part No.	OEM Part No.	Description	Qty Req	Price Each	Order Quantity
81	<b>R106-6773-03</b>	104-8311, 106-6773-03	Plate	1	<b>10.25</b>	
82	<b>R240-3</b>	240-3	Grommet- Rubber	1	<b>9.60</b>	
83	<b>R117-4769</b>	114-9762, 117-4769	Motor - Fan Drive	1	<b>408.40</b>	
84	<b>R2412-125</b>	2412-125	Clamp - Hose - 2 9/16 - 3 1/2	1	<b>5.30</b>	
85	<b>R95-5622</b>	93-5113, 95-5622	Hanger - Rubber	1	<b>20.35</b>	
87	<b>R33113-050</b>	33113-050, 60-6650	Screw - Hx HD 6mm	2	<b>1.20</b>	
88	<b>R3256-22</b>	24-9-BD, 3-1032, 3256-1, 3256-22, 93-0954, 93-0989	Washer - Flat 1/4 Yellow	2	<b>0.12</b>	
89	<b>R117-2364</b>	117-2364	Hub-Fan	1	<b>141.85</b>	
90	<b>R6050-103</b>	48-8010, 48-8030	Washer - Flat	2	<b>0.23</b>	
91	<b>R33023-00</b>	33023-00, 48-7900, 49-7810	Locknut - ESNA 6mm x 1.0	2	<b>0.29</b>	
92	<b>R323-14</b>	01-150-0840, 01-178-0624, 20-55-AD, 21-196-AMD, 30-8750, 30-8970, 3224-10, 323-14, 323-20	Bolt - Hex HD 3/8-16 x 3	4	<b>1.95</b>	

All original equipment manufacturers names and part numbers are used for identification purposes only, and we are in no way implying that our products are original equipment parts. Prices subject to change without notice.



# Replaces Toro Groundsmaster 4100-D

## Parts

Rotary Mower - Model 30413  
Engine



Item No	R&R Part No.	OEM Part No.	Description	Qty Req	Price Each	Order Quantity
93	<b>R400260</b>	01-178-0605, 18-4100, 19-8270, 323-3, 323-33, 323-34, 323-5, 3235-5	Bolt - Hex HD 3/8-16 x 7/8	8	<b>0.75</b>	
94	<b>R53-9682</b>	53-9682	Motor Mount	4	<b>57.50</b>	
95	<b>R63-7400</b>	63-7400	Washer - Rebound	4	<b>2.40</b>	
96	<b>R104-8301</b>	104-8301, 104-9301, 109-6658, 133-7570	Locknut - 3/8-16 Nylon Flanged	12	<b>0.84</b>	
97	<b>R453009</b>	01-166-0400, 24-10-BD, 24-9-AD, 32-9650, 3256-2, 3256-23, 3256-3, 3256-67, 3290-217, 3556-3, 4-2390, 7-0152	Washer - Flat 5/16 SAE	2	<b>0.13</b>	
98	<b>R3296-29</b>	1-804256, 3290-357, 3296-29, 915662P	Locknut - 5/16-18 ESNA	4	<b>2.95</b>	
99	<b>R340-101</b>	340-101	Hydraulic Fitting	2	<b>17.15</b>	
100	<b>R92-2379</b>	92-2379	Clamp - Hose	9	<b>0.41</b>	
101	<b>R353-781</b>	353-781	Fitting-Elbow	2	<b>17.35</b>	
102	<b>R340-2</b>	340-2, 60-1920	Hydraulic Fitting - Striaght	1	<b>6.50</b>	

All original equipment manufacturers names and part numbers are used for identification purposes only, and we are in no way implying that our products are original equipment parts. Prices subject to change without notice.



# Replaces Toro Groundsmaster 4100-D

## Parts

Rotary Mower - Model 30413  
Engine



Item No	R&R Part No.	OEM Part No.	Description	Qty Req	Price Each	Order Quantity
103	<b>R237-79</b>	237-79	O-Ring	2	<b>1.50</b>	
104	<b>R237-22</b>	107-8844, 237-22, 237-78	O-Ring	1	<b>0.62</b>	
105	<b>R237-30</b>	23-6320, 237-30	O-Ring - Seal	2	<b>0.78</b>	
106	<b>R14M7298</b>	104-2612, 33004-00	Nut - 8mm x 1.25 Flanged	4	<b>0.37</b>	
107	<b>R33104-030</b>	33104-030	Bolt - Hex Flanged 8mm	2	<b>4.65</b>	
108	<b>R33104-016</b>	33104-016	Bolt - Hx HD Fl	4	<b>2.35</b>	
109	<b>R19H3130</b>	322-9, 3223-5	Bolt - Hex HD 5/16-18 x 1-3/4	2	<b>0.84</b>	
110	<b>R453011</b>	01-166-0100, 01-166-0120, 01-166-0270, 01-166-0500, 01-166-0600, 01-166-0620, 132-4593, 2356-3, 237-12, 24-10-AD, 24-11-AD, 24-11-BD, 24-12-AD, 24-12-BD, 30-9310, 32-8190, 3256-24, 3256-3, 3256-36, 3256-4, 453011, 47-9950, 48-9220, 513458, 7-0052	Washer - Flat 3/8 SAE Y/Zinc	4	<b>0.11</b>	

All original equipment manufacturers names and part numbers are used for identification purposes only, and we are in no way implying that our products are original equipment parts. Prices subject to change without notice.



# Replaces Toro Groundsmaster 4100-D Parts

*Rotary Mower - Model 30413  
Engine*



Item No	R&R Part No.	OEM Part No.	Description	Qty Req	Price Each	Order Quantity
111	<b>R187-0</b>	3256-25, 7-0032	Washer - Flat 7/16 SAE	2	<b>0.22</b>	
112	<b>R93-5023</b>	93-5023	Spacer	2	<b>4.70</b>	
113	<b>R46-6560</b>	46-6560	Bushing	4	<b>3.55</b>	
115	<b>R80-6990</b>	80-6990	Washer - Hardened	2	<b>2.75</b>	
116	<b>R237-42</b>	237-42, 31-4160	O-Ring	1	<b>0.80</b>	
117	<b>R324-5</b>	01-178-0710, 20-64-AGD, 20-67-AGD, 30-8890, 3225-2, 324-5	Bolt - Hex HD	2	<b>0.64</b>	

All original equipment manufacturers names and part numbers are used for identification purposes only, and we are in no way implying that our products are original equipment parts. Prices subject to change without notice.