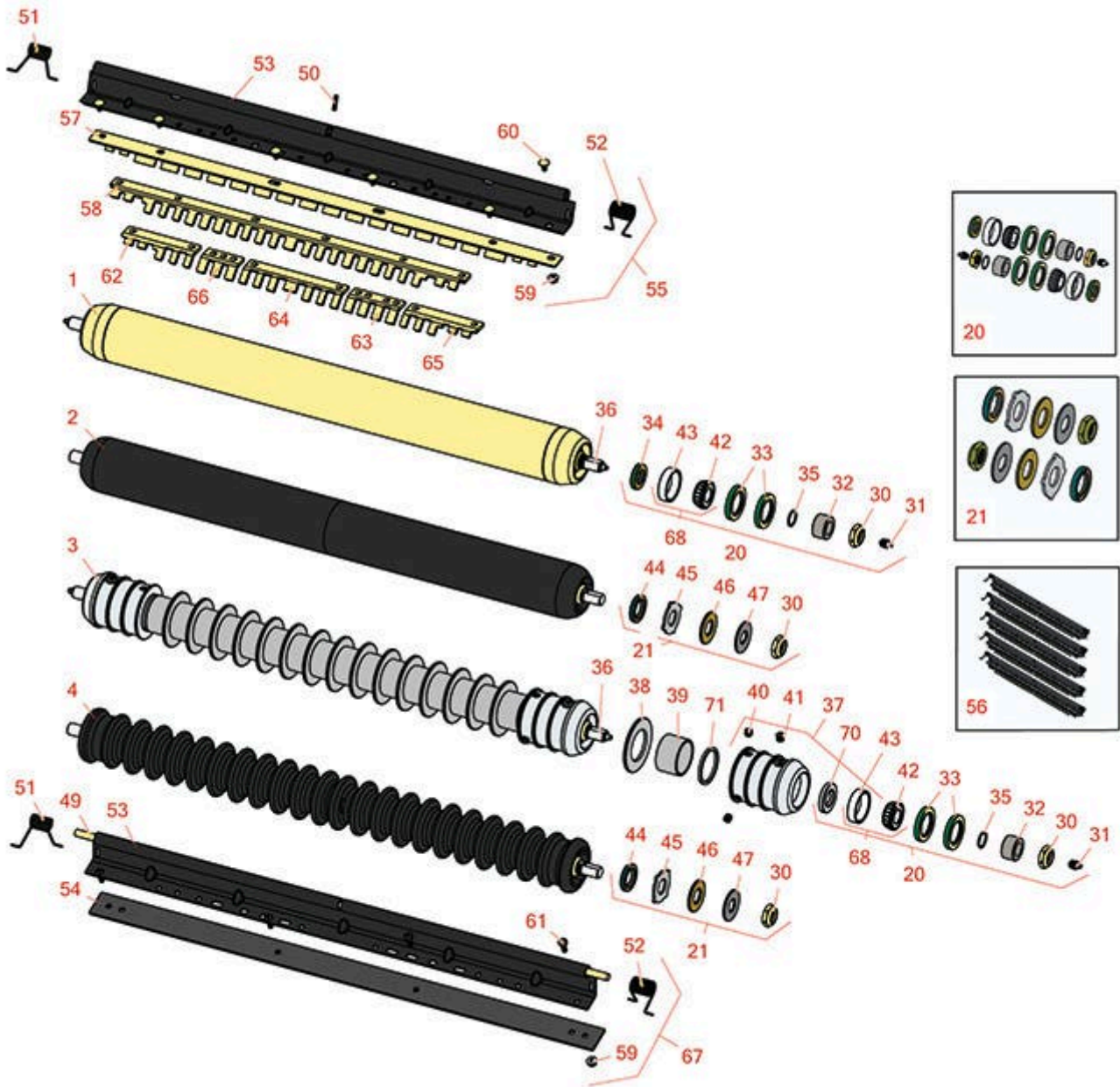




# Replaces John Deere 305 Hydraulic Gang Mower Parts

ESP Cutting Unit  
Rollers



All original equipment manufacturers names and part numbers are used for identification purposes only, and we are in no way implying that our products are original equipment parts. Prices subject to change without notice.



# Replaces John Deere 305 Hydraulic Gang Mower Parts

ESP Cutting Unit  
Rollers



Item No	R&R Part No.	OEM Part No.	Description	Qty Req	Price Each	Order Quantity
---------	--------------	--------------	-------------	---------	------------	----------------

## R&R Rollers

1	<b>RAET10873</b>	AET10873, AMT2961	Roller - Smooth Tubular Steel 26	0	<b>239.50</b>	
---	------------------	----------------------	-------------------------------------	---	---------------	--

*Tech Note: Constructed with a through shaft, this heavy duty roller uses greasable tapered bearings for extended life.:*

2	<b>R1203610</b>		Roller - Smooth UHMW Polyethylene	0	<b>245.25</b>	
---	-----------------	--	--------------------------------------	---	---------------	--

*Tech Note: Machined from solid UHMW, this low maintenance roller uses a 1" solid stainless steel shaft and requires no grease. UHMW material prevents build-up of debris.:*

3	<b>R500508</b>		Roller - Grooved Repairable Steel	0	<b>305.95</b>	
---	----------------	--	--------------------------------------	---	---------------	--

*Tech Note: Constructed with a through shaft and greasable ball bearings, this roller can be repaired by unscrewing the ends and replacing the series of washers and spacers.:*

4	<b>R1203600</b>		Roller - Grooved UHMW Polyethylene	0	<b>273.25</b>	
---	-----------------	--	---------------------------------------	---	---------------	--

*Tech Note: Machined from solid UHMW, this low maintenance roller rotates around a 1" solid stainless steel shaft and requires no bearings or grease. Patented groove design and smooth UHMW material prevents build-up of debris:*

## Overhaul Kits

20	<b>RAET10632</b>	AET10632	Overhaul Kit - Roller	0	<b>76.55</b>	
----	------------------	----------	-----------------------	---	--------------	--

*Tech Note: Includes 4 ea: RET15755 Seal; 2 ea: R237-54 O-Ring, R253-122 Seal, R254-78 Bearing, R254-79 Cup, R3296-15 Locknut, R471219 Grease Zerk, RET15726 Sleeve, RET15756 Seal:*

21	<b>R101399</b>		Overhaul Kit - UHMW 2 Pc Roller	1	<b>41.15</b>	
----	----------------	--	------------------------------------	---	--------------	--

*Tech Note: Fits all R&R 2-1/2" - 3-1/2" Dia. Black UHMW Plastic Rollers that do not use ball bearings.. Includes 2 ea.: R1503230 Star Washers, R1503470 Seals, R150333 Thrust Washers, R3296-15 Locknuts, R1503471 Bronze Thrust Washers:*

## Other Parts Available

30	<b>R3296-15</b>	N101345	Locknut - 3/4-16 Nylon Jam	2	<b>2.15</b>	
----	-----------------	---------	----------------------------	---	-------------	--

All original equipment manufacturers names and part numbers are used for identification purposes only, and we are in no way implying that our products are original equipment parts. Prices subject to change without notice.



# Replaces John Deere 305 Hydraulic Gang Mower Parts

ESP Cutting Unit  
Rollers



Item No	R&R Part No.	OEM Part No.	Description	Qty Req	Price Each	Order Quantity
31	<b>R471219</b>	471219, JD7759, JD7798	Zerk - Grease	2	<b>0.41</b>	
32	<b>RET15726</b>	ET15726, RET15726	Sleeve - Wear Hardened	2	<b>13.95</b>	
33	<b>RET15755</b>	ET15755	Seal - Oil	4	<b>5.15</b>	
34	<b>RET15756</b>	ET15756, MT1739, MT739	Seal	2	<b>5.45</b>	
35	<b>R237-54</b>	U46731, U6731	O-Ring - Small	2	<b>0.50</b>	
36	<b>RET16934</b>	ET16934	Shaft - Roller	1	<b>49.95</b>	
37	<b>R500511</b>		Roller End - Threaded 3	2	<b>84.45</b>	
38	<b>R150673</b>		Washer - 3 Repairable Roller	15	<b>1.45</b>	
39	<b>R150676</b>		Spacer - 2-3/4 Dia x 1-1/4 L	16	<b>3.75</b>	
40	<b>R150691</b>		Screw - Set Nyloc 3/8-16 x 3/8	4	<b>1.10</b>	
41	<b>R170714</b>	E14814	Fitting - Pressure Relief	2	<b>2.25</b>	
42	<b>R254-78</b>	JD8188	Tapered Bearing Cone	2	<b>6.05</b>	
43	<b>R254-79</b>	JD8226	Cup - Bearing	2	<b>3.20</b>	
<i>Tech Note: Use R254-79M installation mandrel to properly install race.:</i>						
44	<b>R1503470</b>		Seal - Inner Wiper	2	<b>5.85</b>	
45	<b>R1503230</b>		Washer - Thrust Outer Keyed	2	<b>6.05</b>	
46	<b>R1503471</b>		Washer - Thrust SAE660 Bronze	2	<b>4.20</b>	
47	<b>R150333</b>		Washer - Flat Keyed Outer SS	2	<b>5.15</b>	

All original equipment manufacturers names and part numbers are used for identification purposes only, and we are in no way implying that our products are original equipment parts. Prices subject to change without notice.



# Replaces John Deere 305 Hydraulic Gang Mower Parts

ESP Cutting Unit  
Rollers



Item No	R&R Part No.	OEM Part No.	Description	Qty Req	Price Each	Order Quantity
49	<b>RET16931</b>	ET16931	Pin - 30 Scraper	1	<b>14.15</b>	
50	<b>R34M7010</b>	34M7010	Pin - Spring	1	<b>0.29</b>	
51	<b>RET17630</b>	ET17630	Spring - Torsion RH	1	<b>7.05</b>	
52	<b>RET17629</b>	ET17629	Spring - Torsion LH	1	<b>7.05</b>	
53	<b>R500570</b>		Bar - 30 Scraper	1	<b>37.70</b>	
54	<b>RMT2593</b>	MT2593	Blade - 30 Scraper	1	<b>20.10</b>	
55	<b>R500566</b>		Scraper - Assy Fits R500508	5	<b>81.90</b>	
<i>Tech Note: Incl R500567 Scraper:</i>						
55	<b>R500568</b>		Scraper - Assy 30 Fits OEM	5	<b>81.60</b>	
<i>Tech Note: Incl: R500569 Scraper:</i>						
56	<b>RBM18607</b>	BM18607	Scraper Kit - OEM Grooved Roller Set / 5	1	<b>396.25</b>	
<i>Tech Note: Includes 30 ea: R03M7251 Bolt, R14M7303 Bolt; 5 ea: R34M7010 Pin, R500569 Scraper, R500570 Bar, RET16931 Pin, RET17629 LH Spring, RET17630 RH Spring:</i>						
57	<b>R500567</b>		Scraper - 30 in Fits R500508	1	<b>39.45</b>	
58	<b>R500569</b>		Scraper - 30 in Fits OEM	1	<b>39.45</b>	
59	<b>R14M7303</b>	14M7303	Nut - 6mm x 1.0 Flanged	0	<b>0.39</b>	
60	<b>R03M7251</b>	03M7251	Bolt - Gr. Roller Scraper	0	<b>0.78</b>	
61	<b>R21M7246</b>	21M7246	Screw	0	<b>0.29</b>	
62	<b>RMT5158</b>	MT5158	Scraper - Fits J.D. RH End	1	<b>8.05</b>	
63	<b>RMT2341</b>	MT2341	Section - Grooved Scraper 4 Tooth	3	<b>5.45</b>	
64	<b>RMT2340</b>	MT2340	Scraper - Fits J.D. Center	1	<b>9.65</b>	

All original equipment manufacturers names and part numbers are used for identification purposes only, and we are in no way implying that our products are original equipment parts. Prices subject to change without notice.



# Replaces John Deere 305 Hydraulic Gang Mower Parts

*ESP Cutting Unit  
Rollers*



Item No	R&R Part No.	OEM Part No.	Description	Qty Req	Price Each	Order Quantity
65	<b>RMT5159</b>	MT5159	Scraper - Fits J.D. LH End	1	<b>8.05</b>	
66	<b>RMT2342</b>	MT2342	Section - Grooved Scraper 3 Tooth	1	<b>5.80</b>	
67	<b>RAMT1379</b>	AMT1379	Scraper - Assy Solid Roller 30	1	<b>54.45</b>	
68	<b>R500534</b>		Bearing - with Cup	2	<b>11.80</b>	
70	<b>R253-122</b>	253-122	Seal	2	<b>3.55</b>	
71	<b>R150676A</b>		Spacer - 1/8	4	<b>0.94</b>	

All original equipment manufacturers names and part numbers are used for identification purposes only, and we are in no way implying that our products are original equipment parts. Prices subject to change without notice.