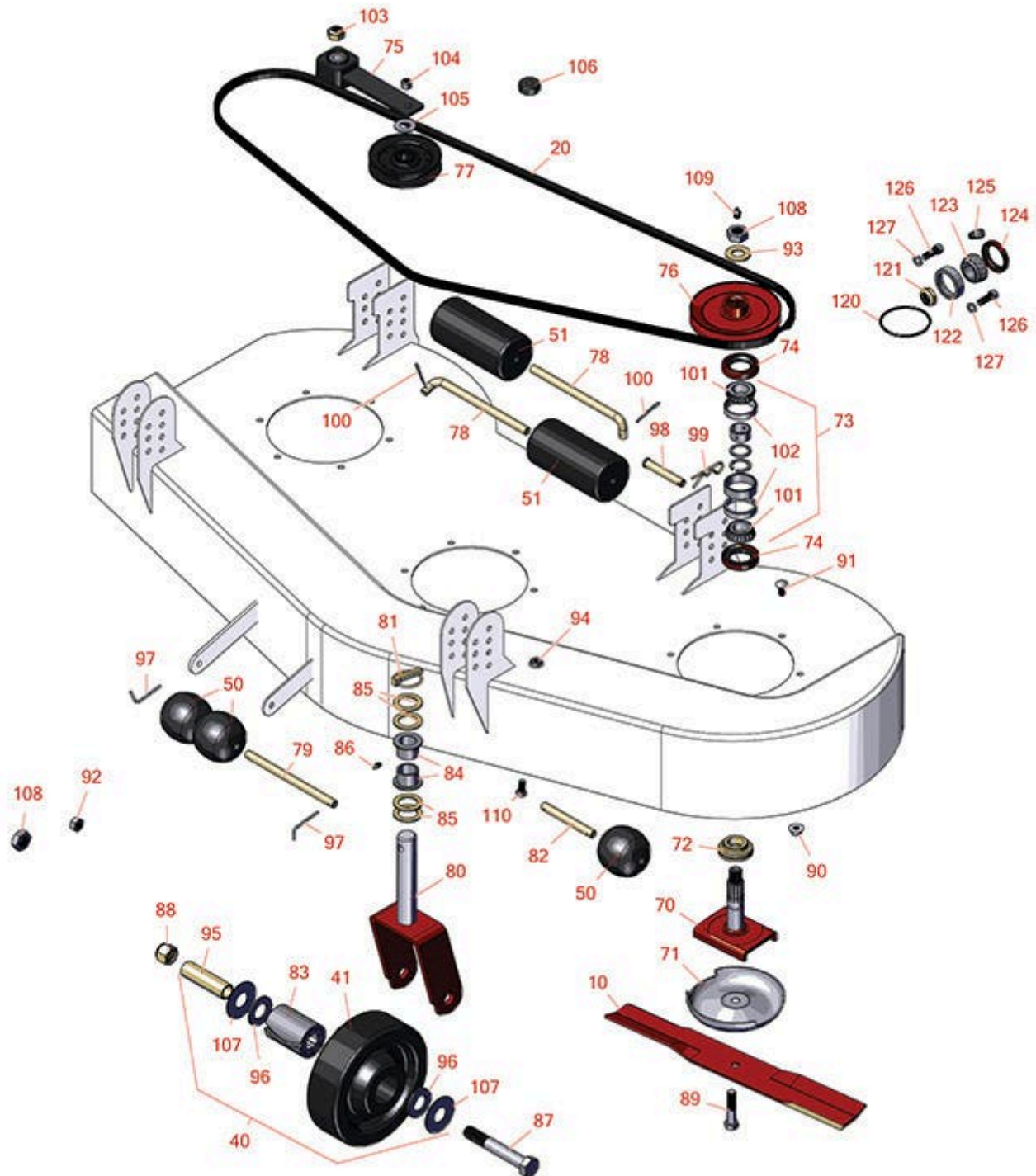




# Replaces Toro Groundsmaster 220-D Parts

Rotary Mower - Model 30794

62in Side Discharge Deck - Model 30564



All original equipment manufacturers names and part numbers are used for identification purposes only, and we are in no way implying that our products are original equipment parts. Prices subject to change without notice.



# Replaces Toro Groundsmaster 220-D Parts



Rotary Mower - Model 30794

62in Side Discharge Deck - Model 30564

Item No	R&R Part No.	OEM Part No.	Description	Qty Req	Price Each	Order Quantity
<b>Blades</b>						
10	<b>R44-6250</b>	44-6250, 44-6250-03	Mower Blade	3	<b>19.05</b>	
<b>Belts</b>						
20	<b>R44-6260</b>	44-6260	Belt - Deck	1	<b>47.70</b>	
<b>Wheels</b>						
40	<b>R27-1050</b>	27-1050, 46-8230	Wheel Assy	2	<b>82.45</b>	
41	<b>R27-1190</b>	27-1190	Wheel Only - Gm 52 Deck	2	<b>42.35</b>	
<b>Rollers</b>						
50	<b>R29-4820</b>	29-4820	Roller	3	<b>16.55</b>	
51	<b>R36-1740</b>	36-1740	Roller - Rotary Deck	2	<b>21.25</b>	
<b>Other Parts Available</b>						
70	<b>R27-0920</b>	27-0920	Spindle - Splined - 4-5/8 in	3	<b>73.95</b>	
71	<b>R72-9361</b>	27-1000, 27-1001, 72-9360, 72-9361	Cup - Anti-Scalp	3	<b>21.60</b>	
72	<b>R27-0950</b>	27-0950	Spacer - Bearing	3	<b>24.95</b>	
73	<b>R46-8530</b>	27-0960, 46-8530	Bearing - Set with Rings/Spacers	3	<b>46.95</b>	
<i>Tech Note: Includes 2 ea: R254-72 Bearings, R254-94 Cones, Spacers &amp; Rings:</i>						
74	<b>R253-139</b>	253-139	Seal - Spindle	3	<b>5.40</b>	
75	<b>R27-8580</b>	100-6178, 27-1060, 27-8580, 99-1297	Socket - Idler	1	<b>54.25</b>	

All original equipment manufacturers names and part numbers are used for identification purposes only, and we are in no way implying that our products are original equipment parts. Prices subject to change without notice.



# Replaces Toro Groundsmaster 220-D Parts



Rotary Mower - Model 30794

62in Side Discharge Deck - Model 30564

Item No	R&R Part No.	OEM Part No.	Description	Qty Req	Price Each	Order Quantity
76	<b>R44-6340</b>	44-6340, 44-6340-03	Pulley - Splined 62 Deck	3	<b>29.95</b>	
77	<b>R65-5940</b>	65-5940	Pulley - Idler	2	<b>21.45</b>	
78	<b>R40-0340</b>	40-0340	Shaft - Rear Roller	2	<b>22.30</b>	
79	<b>R40-6400</b>	40-6400	Shaft - Roller	1	<b>13.35</b>	
80	<b>R40-0370</b>	40-0370	Caster Fork -Use w/Solid Wheel	2	<b>61.15</b>	
81	<b>R3290-384</b>	3290-384	Pin - Lynch Heavy Duty	2	<b>6.25</b>	
82	<b>R57-0680</b>	57-0680	Shaft - Roller - 4-1/4	1	<b>6.80</b>	
83	<b>R27-1210</b>	27-1210	Bearing - w/Sleeve	2	<b>17.85</b>	
84	<b>R94-1291</b>	94-1291	Bushing - Flanged	4	<b>6.30</b>	
84	<b>R28-9290</b>	28-9290	Bushing - Steel Castor	4	<b>7.15</b>	
85	<b>R3-6781</b>	3-6781	Washer - Thrust - Castor Wheel	8	<b>1.85</b>	
86	<b>R302-5</b>	21-6010, 302-11, 302-37, 302-47, 302-5, 302-57, 302-58, 302-6, 31-0300, 32-9660, 60-0800, 62-3880, 92-4181	Fitting - Grease	2	<b>0.27</b>	
87	<b>R328-9</b>	01-150-1170, 01-150-1700, 01-178-1240, 328-9	Capscrew - 3/4-10 x 5	2	<b>4.20</b>	
88	<b>R32153-6</b>	32153-6	Locknut - 3/4-10 ESNA Zinc	2	<b>1.85</b>	

All original equipment manufacturers names and part numbers are used for identification purposes only, and we are in no way implying that our products are original equipment parts. Prices subject to change without notice.



# Replaces Toro Groundsmaster 220-D Parts



Rotary Mower - Model 30794

62in Side Discharge Deck - Model 30564

Item No	R&R Part No.	OEM Part No.	Description	Qty Req	Price Each	Order Quantity
89	<b>R44-2200</b>	3213-22, 44-2200	Bolt - Blade	3	<b>2.45</b>	
90	<b>R32128-21</b>	32128-21	Locknut - Flanged 3/8-16 Whiz Top Lock	18	<b>0.55</b>	
91	<b>R3231-22</b>	900234P	Bolt - Carriage 3/8-16 x 1	20	<b>0.52</b>	
92	<b>R32153-5</b>	32153-5	Locknut - 1/2-13	2	<b>0.75</b>	
93	<b>R7-4150</b>	7-4150	Washer	3	<b>1.85</b>	
94	<b>R32128-43</b>	30-8990, 32128-43, 3290-357	Nut - Flanged Whiz - 3/8-16	10	<b>0.62</b>	
95	<b>R27-1200</b>	27-1200, 46-8640, 54-8860	Spacer - Front Deck Wheel	2	<b>8.05</b>	
96	<b>R27-1180</b>	27-1180	Washer - Brg. Retainer	4	<b>1.60</b>	
97	<b>R57-0690</b>	57-0690	Pin - Roller Shaft	2	<b>3.65</b>	
98	<b>R283-55</b>	283-55	Clevis Pin - 1/2 x 3	4	<b>6.30</b>	
99	<b>R3290-355</b>	01-159-0050, 3290-355, 58-5370	Pin - Bridge - Snap	4	<b>2.35</b>	
100	<b>R3272-11</b>	01-151-0010, 01-151-0040, 28-18-D, 28-28-D, 3211-72, 3272-11	Pin - Cotter	4	<b>0.70</b>	
101	<b>R254-94</b>	1-543509, 254-94, 32-8090, 32-8240, 32-9640, 40440, 62-3330	Tapered Bearing Cone	2	<b>7.15</b>	

All original equipment manufacturers names and part numbers are used for identification purposes only, and we are in no way implying that our products are original equipment parts. Prices subject to change without notice.



# Replaces Toro Groundsmaster 220-D Parts



Rotary Mower - Model 30794

62in Side Discharge Deck - Model 30564

Item No	R&R Part No.	OEM Part No.	Description	Qty Req	Price Each	Order Quantity
102	<b>R254-72</b>	01-103-0050, 01-103-0120, 01-103-0140, 1-543508, 254-71, 254-72, 40439, 62-3340, 99-4511	Cup - Bearing	2	<b>3.85</b>	
103	<b>R3296-33</b>	3296-33	Locknut - 5/8-18 ESNA Jam	1	<b>1.30</b>	
104	<b>R3296-5</b>	3296-5	Locknut - 3/8-24 Jam Nylon	2	<b>0.74</b>	
105	<b>R3256-27</b>	24-15-BD, 32-7820, 3256-27, 7-0131, Jul-78	Washer - Flat 5/8 SAE	1	<b>0.26</b>	
106	<b>R63-9750</b>	63-9750, 64-9750	Mount - Rubber	4	<b>11.75</b>	
107	<b>R27-1170</b>	27-1170	Washer - Thrust	0	<b>1.60</b>	
108	<b>R444742</b>	32146-20, 9150906, 915090P	Nut - 3/4-16 Gripco Centerlock	3	<b>2.30</b>	
109	<b>R471219</b>	30-8360, 302-2, 302-24, 302-31, 302-52, 471219	Zerk - Grease	3	<b>0.41</b>	
110	<b>R400258</b>	01-150-0800, 01-178-0600, 01-178-0606, 20-45-AD, 31-0200, 31-9910, 3224-1, 323-4, 400258	Bolt - Hex HD 3/8-16 x 3/4	2	<b>0.51</b>	

All original equipment manufacturers names and part numbers are used for identification purposes only, and we are in no way implying that our products are original equipment parts. Prices subject to change without notice.



# Replaces Toro Groundsmaster 220-D Parts



*Rotary Mower - Model 30794*

*62in Side Discharge Deck - Model 30564*

Item No	R&R Part No.	OEM Part No.	Description	Qty Req	Price Each	Order Quantity
120	<b>R237-97</b>	237-97	O-Ring - Gear Box	2	<b>1.45</b>	
121	<b>R3296-15</b>	116-7306, 32118-5, 32127-23, 32127-47, 3296-15	Locknut - 3/4-16 Nylon Jam	2	<b>2.15</b>	
122	<b>R254-90</b>	21-6120, 21-6430, 21-8390, 254-90, 32-8180	Tapered Bearing Cup	4	<b>4.85</b>	
123	<b>R254-91</b>	254-91	Tapered Bearing Cone	4	<b>9.30</b>	
124	<b>R253-137</b>	253-137	Seal - Gear Box	2	<b>4.85</b>	
125	<b>R302-14</b>	302-14	Fitting - Relief	1	<b>2.45</b>	
126	<b>R3274-7</b>	3247-7, 3274-7	Bolt - Soc HD Cap 3/8-16 x 1	5	<b>1.40</b>	
127	<b>R3253-21</b>	215-51, 30-8470, 3253-21, Jul-12	Washer - Lock 3/8	2	<b>0.14</b>	

All original equipment manufacturers names and part numbers are used for identification purposes only, and we are in no way implying that our products are original equipment parts. Prices subject to change without notice.