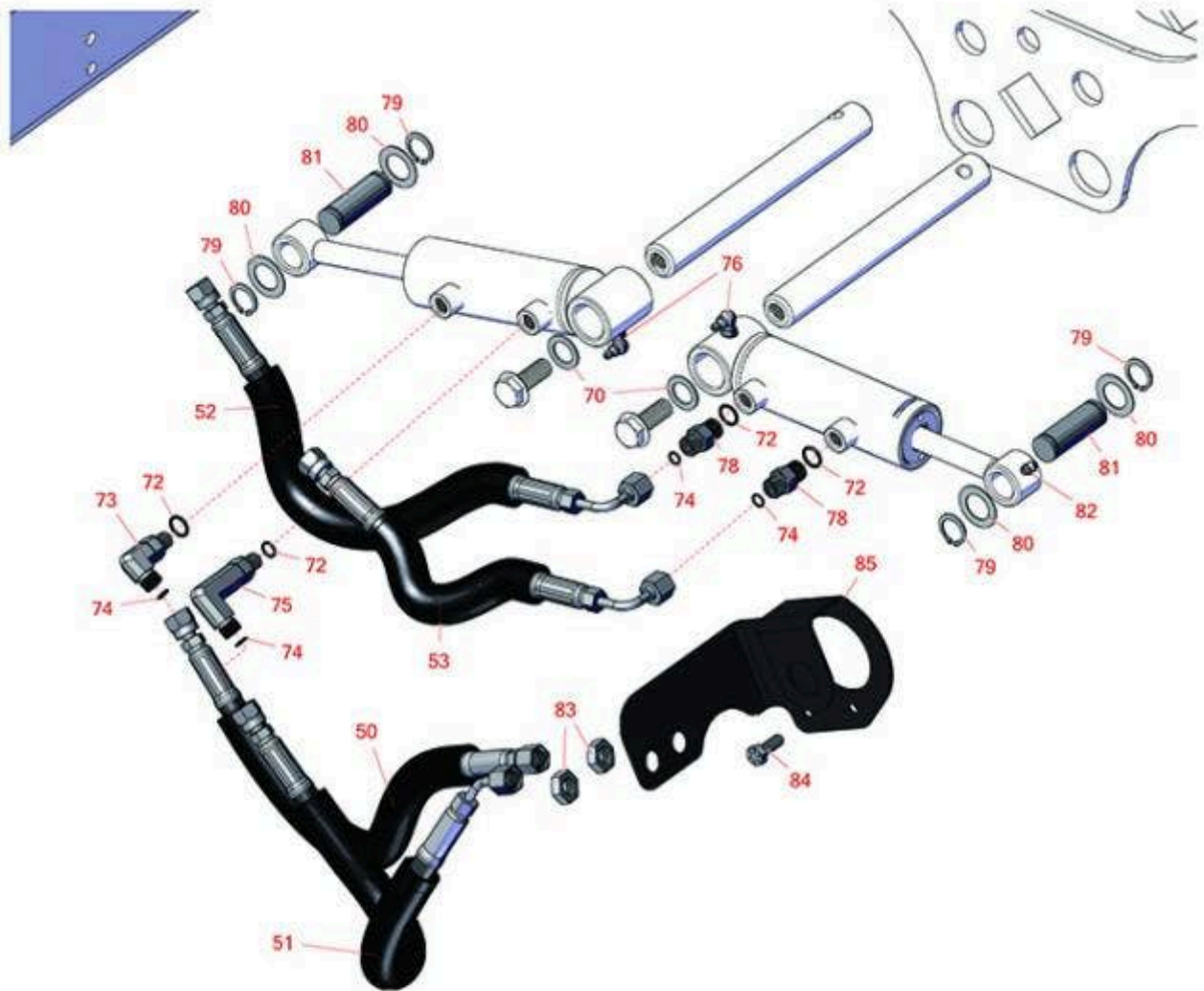




# Replaces Toro Reelmaster 5410-D Parts

*Traction Unit - with Yanmar Engine  
Rear Lift Cylinder & Hydraulics*



All original equipment manufacturers names and part numbers are used for identification purposes only, and we are in no way implying that our products are original equipment parts. Prices subject to change without notice.



# Replaces Toro Reelmaster 5410-D Parts

*Traction Unit - with Yanmar Engine  
Rear Lift Cylinder & Hydraulics*



| Item No                      | R&R Part No.     | OEM Part No.  | Description                   | Qty Req | Price Each   | Order Quantity |
|------------------------------|------------------|---|-------------------------------|---------|--------------|----------------|
| <b>Hoses</b>                 |                  |   |                               |         |              |                |
| 50                           | <b>R110-0931</b> | 110-0931  | Hydraulic Hose Assy           | 1       | <b>38.15</b> |                |
| 51                           | <b>R110-8966</b> | 110-8966  | Hydraulic Hose Assy           | 1       | <b>52.10</b> |                |
| 52                           | <b>R110-0929</b> | 110-0929  | Hydraulic Hose Assy           | 1       | <b>46.15</b> |                |
| 53                           | <b>R110-0930</b> | 110-0930,<br>110-2930   | Hydraulic Hose Assy           | 1       | <b>46.15</b> |                |
| <b>Other Parts Available</b> |                  |   |                               |         |              |                |
| 70                           | <b>R453017</b>   | 01-166-0050,<br>01-166-0240,<br>01-166-0800,<br>24-13-AD,<br>24-14-AD,<br>32-8110,<br>3256-26,<br>3256-6,<br>453017,<br>69-8980,<br>87-7270 | Washer - Flat 1/2             | 2       | <b>0.28</b>  |                |
| 72                           | <b>R237-22</b>   | 107-8844,<br>237-22,<br>237-78  | O-Ring                        | 2       | <b>0.62</b>  |                |
| 73                           | <b>R340-132</b>  | 340-132   | Hydraulic Fitting - 90 Deg    | 1       | <b>14.40</b> |                |
| 74                           | <b>R237-21</b>   | 237-21,<br>327-21   | O-Ring                        | 4       | <b>0.47</b>  |                |
| 75                           | <b>R100-7695</b> | 100-7695  | Adapter-Hyd                   | 1       | <b>49.15</b> |                |
| 76                           | <b>R302-60</b>   | 302-60  | Zerk - Grease 90 Deg.         | 2       | <b>0.68</b>  |                |
| 78                           | <b>R340-92</b>   | 340-92  | Hydraulic Fitting - Striaight | 2       | <b>6.95</b>  |                |
| 79                           | <b>R32120-93</b> | 32120-93  | Snap Ring - HD                | 4       | <b>1.20</b>  |                |

All original equipment manufacturers names and part numbers are used for identification purposes only, and we are in no way implying that our products are original equipment parts. Prices subject to change without notice.



# Replaces Toro Reelmaster 5410-D Parts

*Traction Unit - with Yanmar Engine  
Rear Lift Cylinder & Hydraulics*



| Item No | R&R Part No.        | OEM Part No.   | Description                 | Qty Req | Price Each   | Order Quantity |
|---------|---------------------|--|-----------------------------|---------|--------------|----------------|
| 80      | <b>R3-6498</b>      | 3--6498,<br>3-6498,<br>47-8270   | Washer - Thrust             | 4       | <b>4.10</b>  |                |
| 81      | <b>R104-0046</b>    | 104-0046   | Pin - Slide - Cylinder      | 2       | <b>7.15</b>  |                |
| 82      | <b>R302-5</b>       | 21-6010,<br>302-11,<br>302-37,<br>302-47,<br>302-5,<br>302-57,<br>302-58,<br>302-6,<br>31-0300,<br>32-9660,<br>60-0800,<br>62-3880,<br>92-4181 | Fitting - Grease            | 2       | <b>0.27</b>  |                |
| 83      | <b>R340-78</b>      | 340-78   | Nut - Lock Bulkhead         | 4       | <b>2.30</b>  |                |
| 84      | <b>R322-4</b>       | 322-4,<br>3290-115,<br>908018P   | Bolt - Hex HD 5/16-18 x 7/8 | 4       | <b>0.47</b>  |                |
| 85      | <b>R110-0917-01</b> | 110-0917-01  | Bracket-Bulkhead - LH       | 1       | <b>23.75</b> |                |

All original equipment manufacturers names and part numbers are used for identification purposes only, and we are in no way implying that our products are original equipment parts. Prices subject to change without notice.