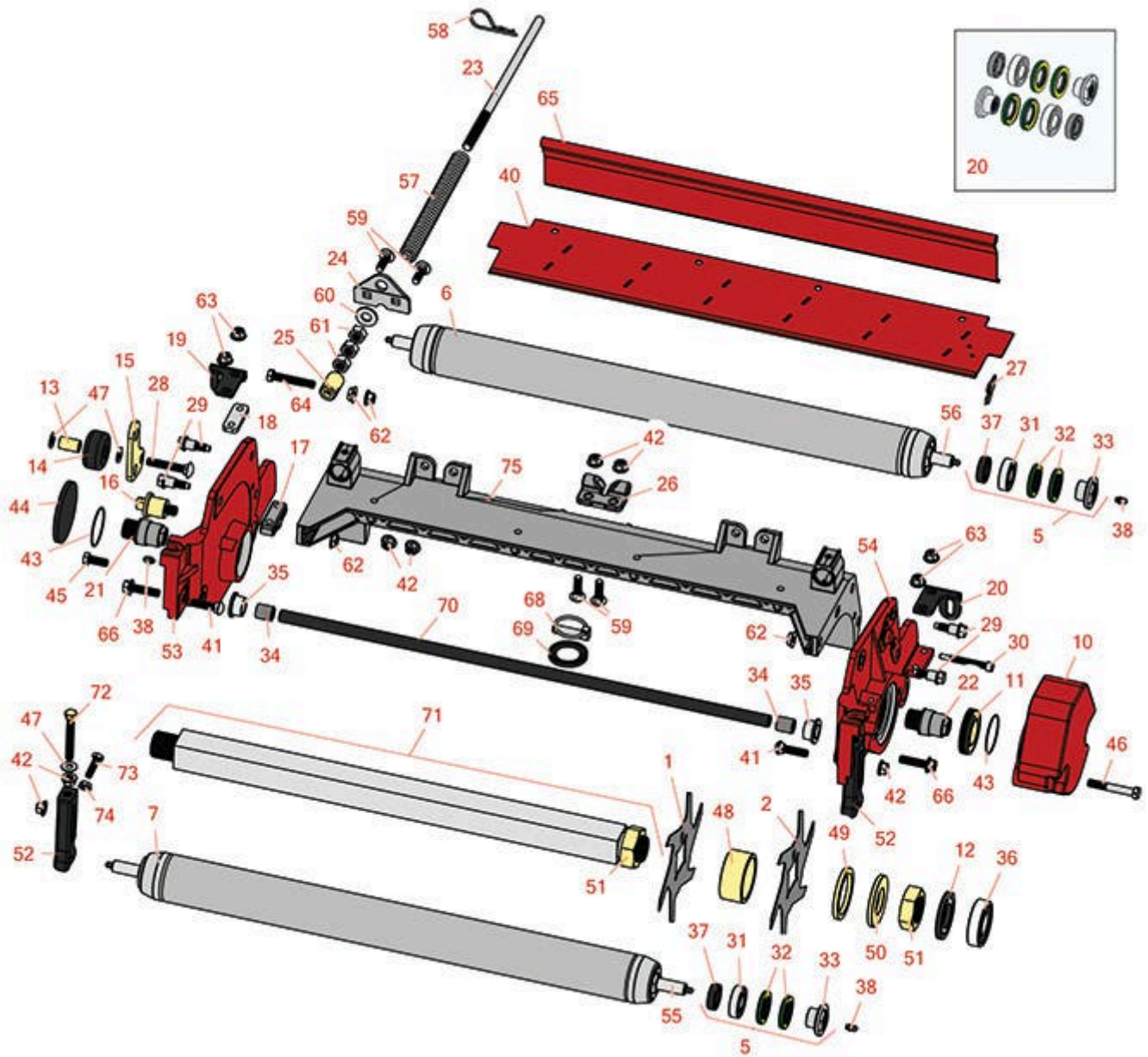




# Replaces Toro Reelmaster 7000-D Parts

27in DPA Verti-Cut Unit - Model 03716

Reel & Frame



All original equipment manufacturers names and part numbers are used for identification purposes only, and we are in no way implying that our products are original equipment parts. Prices subject to change without notice.



# Replaces Toro Reelmaster 7000-D Parts

27in DPA Verti-Cut Unit - Model 03716

Reel & Frame



Item No	R&R Part No.	OEM Part No.	Description	Qty Req	Price Each	Order Quantity
---------	--------------	--------------	-------------	---------	------------	----------------

## Verti-Cut Blades Available

1	<b>R106-8625</b>	106-8625	Blade - Carbide Tip	19	<b>18.30</b>	
2	<b>R93-3038-03</b>	93-3038, 93-3038-03	Blade - Vertical Mower 1/16x7.25	19	<b>4.20</b>	

## Overhaul Kits

5	<b>R114-5430</b>	114-5430	Overhaul Kit - Roller	1	<b>82.40</b>	
---	------------------	----------	-----------------------	---	--------------	--

*Tech Note: Includes 4 ea.: R112-7494 Seals; 2 ea.: R302-5 Grease Zerks, R114-3717 Seals, R112-5290 Bearings & R114-3745 Locknuts:*

## Rollers

6	<b>R117-3756</b>	117-3756, 137-6123	Roller Assy - 27" Rear Solid 2 1/2	1	<b>358.85</b>	
7	<b>R117-3759</b>	117-3759, 137-6124	Roller Assy - 27" Front Solid 2 1/2	1	<b>380.45</b>	

## Other Parts Available

10	<b>R108-4269-01</b>	108-4269-01	Weight	1	<b>82.65</b>	
11	<b>R107-2954</b>	107-2954	Nut - Bearing Adjuster	1	<b>11.50</b>	
12	<b>R107-4028</b>	105-6757, 107-4028	Seal - Grease	2	<b>16.05</b>	
13	<b>R59-2580</b>	59-2580	Spacer - Wheel	2	<b>5.30</b>	
14	<b>R108-4293</b>	108-4293	Roller - Verti-Cut	2	<b>9.95</b>	
15	<b>R108-4286</b>	108-4286	Bracket - Adj	2	<b>9.80</b>	
16	<b>R108-4289</b>	108-4289	Pin - Roller Mounting	2	<b>35.55</b>	
17	<b>R106-3924</b>	106-3924	Bracket - Rear Roller	2	<b>15.70</b>	
18	<b>R106-3925</b>	106-3925	Shim - 1/4 - Rear Roller HOC	4	<b>4.50</b>	

All original equipment manufacturers names and part numbers are used for identification purposes only, and we are in no way implying that our products are original equipment parts. Prices subject to change without notice.



# Replaces Toro Reelmaster 7000-D Parts

27in DPA Verti-Cut Unit - Model 03716

Reel & Frame



Item No	R&R Part No.	OEM Part No.	Description	Qty Req	Price Each	Order Quantity
19	<b>R107-3281</b>	107-3281	Bracket - Scraper - RH	1	<b>16.40</b>	
20	<b>R107-3279</b>	107-3279	Bracket - Scraper - LH	1	<b>16.40</b>	
21	<b>R108-4978</b>	108-4978, 131-0516	Insert - RH - Verti-Cut Shaft	1	<b>77.40</b>	
22	<b>R108-4977</b>	108-4977, 131-0515	Insert - LH - Verti-Cut Shaft	1	<b>77.40</b>	
23	<b>R115-2007</b>	107-7437, 115-2007	Rod - Spring	1	<b>20.45</b>	
24	<b>R110-4069</b>	110-4069	Bracket	1	<b>7.05</b>	
25	<b>R99-8662</b>	99-8662	Tube - Spring	1	<b>11.55</b>	
26	<b>R110-4058</b>	110-4058	Bracket - Chain	1	<b>19.40</b>	
27	<b>R108-4961</b>	108-4961	Tab - Stop - Shield	1	<b>26.35</b>	
28	<b>R3231-7</b>	3231-33, 3231-7	Bolt - Carriage 3/8-16 x 2-1/4	2	<b>3.85</b>	
29	<b>R107-2979</b>	107-2979	Bolt - Shoulder	6	<b>3.25</b>	
30	<b>R107-7773</b>	107-7773	Bolt - Soc HD Cap 5/16-18 x 2-1/2	1	<b>7.50</b>	
31	<b>R112-5290</b>	112-5290, 251--346, 251-346, 72-5430	Bearing - Stainless	2	<b>10.30</b>	
32	<b>R112-7494</b>	112-7494	Seal	4	<b>5.15</b>	
33	<b>R114-3745</b>	114-3745, 114-5411	Locknut - Bearing - Stainless	2	<b>19.15</b>	
34	<b>R108-4279</b>	108-4279	Spacer - Frame	2	<b>6.75</b>	
35	<b>R93-2877</b>	93-2877	Bushing - Flanged	2	<b>3.65</b>	
36	<b>R93-2489</b>	93-2489	Bearing - Reel	2	<b>21.20</b>	

All original equipment manufacturers names and part numbers are used for identification purposes only, and we are in no way implying that our products are original equipment parts. Prices subject to change without notice.



# Replaces Toro Reelmaster 7000-D Parts

27in DPA Verti-Cut Unit - Model 03716

Reel & Frame



Item No	R&R Part No.	OEM Part No.	Description	Qty Req	Price Each	Order Quantity
37	<b>R114-3717</b>	114-3717	Seal	2	<b>2.35</b>	
38	<b>R302-5</b>	21-6010, 302-11, 302-37, 302-47, 302-5, 302-57, 302-58, 302-6, 31-0300, 32-9660, 60-0800, 62-3880, 92-4181	Fitting - Grease	10	<b>0.27</b>	
40	<b>R112-8942</b>	112-8942	Front Grass Shield Assy - 27 in Units	1	<b>28.20</b>	
41	<b>R3231-4</b>	01-157-0440, 01-173-0612, 3231-4	Bolt - Carriage 3/8-16 x 1-1/2	2	<b>1.20</b>	
42	<b>R104-8301</b>	104-8301, 104-9301, 109-6658, 133-7570	Locknut - 3/8-16 Nylon Flanged	13	<b>0.84</b>	
43	<b>R112-6967</b>	112-6967	O-Ring	2	<b>1.95</b>	
44	<b>R94-2703</b>	94-2703	Plug - Plastic Spindle Housing	1	<b>2.05</b>	
45	<b>R323-6</b>	01-150-0010, 01-178-0608, 20-47-AD, 20-47-AGD, 3224-2, 323-6, 49-3510, 908034P, 908332	Bolt - Hex HD 3/8-16 x 1 GR5 YZ	2	<b>0.59</b>	

All original equipment manufacturers names and part numbers are used for identification purposes only, and we are in no way implying that our products are original equipment parts. Prices subject to change without notice.



# Replaces Toro Reelmaster 7000-D Parts

27in DPA Verti-Cut Unit - Model 03716

Reel & Frame



Item No	R&R Part No.	OEM Part No.	Description	Qty Req	Price Each	Order Quantity
46	<b>R101526</b>	01-150-0970, 01-178-0620, 101526, 20-53-AGD, 321-11, 3224-8, 323-11, 323-12, 323-31, 323-4, 323-47	Bolt - Hex HD 3/8-16 x 2-1/2 GR5	2	<b>0.91</b>	
47	<b>R453011</b>	01-166-0100, 01-166-0120, 01-166-0270, 01-166-0500, 01-166-0600, 01-166-0620, 132-4593, 2356-3, 237-12, 24-10-AD, 24-11-AD, 24-11-BD, 24-12-AD, 24-12-BD, 30-9310, 32-8190, 3256-24, 3256-3, 3256-36, 3256-4, 453011, 47-9950, 48-9220, 513458, 7-0052	Washer - Flat 3/8 SAE Y/Zinc	8	<b>0.11</b>	
48	<b>R105-0172</b>	105-0172	Spacer - Verticut Shaft 1.2 in	18	<b>11.25</b>	
49	<b>R105-0177</b>	105-0177	Spacer - Verticut Shaft 1/4 in	1	<b>5.40</b>	
50	<b>R105-0173</b>	105-0173	Washer - Verticut Shaft 1/4 in	1	<b>12.65</b>	
51	<b>R3220-25</b>	3220-25	Nut - Jam 1-3/8-12	1	<b>22.15</b>	

All original equipment manufacturers names and part numbers are used for identification purposes only, and we are in no way implying that our products are original equipment parts. Prices subject to change without notice.



# Replaces Toro Reelmaster 7000-D Parts

27in DPA Verti-Cut Unit - Model 03716

Reel & Frame



Item No	R&R Part No.	OEM Part No.	Description	Qty Req	Price Each	Order Quantity
52	<b>R107-2952</b>	107-2952	Bracket - Front Roller	2	<b>31.55</b>	
53	<b>R110-9631</b>	110-9631	Side Plate - RH	1	<b>167.35</b>	
54	<b>R110-9630</b>	110-9630	Side Plate - LH	1	<b>167.55</b>	
55	<b>R117-0957</b>	117-0957	Shaft - Front Roller - 27" Units	1	<b>61.20</b>	
56	<b>R112-8918</b>	112-8918	Shaft - Long - Rear Roller - 27" Units	1	<b>63.95</b>	
57	<b>R119-4275</b>	119-4275	Spring - Compression	1	<b>35.15</b>	
58	<b>R92-2762</b>	92-2762	Pin - Snap	1	<b>1.50</b>	
59	<b>R3231-25</b>	01-173-0610, 30-9970, 3231-25, 3231-3, 900064P	Bolt - Carriage 3/8-16 x 1-1/4	2	<b>0.66</b>	
60	<b>R87-7270-01</b>	87-7270, 87-7270-01	Washer - Flat 1/2	1	<b>0.29</b>	
61	<b>R443818</b>	01-191-0813, 3218-18, 3218-5, 3248-18	Nut - 1/2-13 Hex Jam Zinc	3	<b>0.35</b>	
62	<b>R32128-43</b>	30-8990, 32128-43, 3290-357	Nut - Flanged Whiz - 3/8-16	8	<b>0.62</b>	
63	<b>R104-8300</b>	104-8300, 104-8300 , 119-4041	Locknut - 5/16-18 Flanged Y/Zinc	4	<b>0.47</b>	
64	<b>R104-3396</b>	104-3396	Bolt - Hex HD 3/8-16 x 2-1/4	1	<b>1.55</b>	
65	<b>R112-8944-01</b>	112-8944-01	Rear Grass Shield Assy - 27 in Units	2	<b>45.25</b>	

All original equipment manufacturers names and part numbers are used for identification purposes only, and we are in no way implying that our products are original equipment parts. Prices subject to change without notice.



# Replaces Toro Reelmaster 7000-D Parts

27in DPA Verti-Cut Unit - Model 03716

Reel & Frame



Item No	R&R Part No.	OEM Part No.	Description	Qty Req	Price Each	Order Quantity
66	<b>R3234-19</b>	3234-19	Bolt - Hex Washer 3/8-16x1-3/4	2	<b>1.75</b>	
68	<b>R283-71</b>	283-71	Pin - Lynch Heavy Duty	1	<b>2.45</b>	
69	<b>R94-8946</b>	94-1427, 94-8946	Washer - Thrust	1	<b>3.15</b>	
70	<b>R117-3752</b>	117-3752	Tube- Support - 27 in Units	1	<b>51.65</b>	
71	<b>R119-0625</b>	119-0625	Shaft Assy - V-Cut	1	<b>298.50</b>	
72	<b>R112-7451</b>	100-9429, 112-7451	Bolt - Hex Tap 3/8-16 x 2-3/4	2	<b>1.95</b>	
73	<b>R322-16</b>	322-16, Apr-00	Bolt - Hex HD 5/16-18 x 1-1/8	2	<b>1.65</b>	
74	<b>R445722</b>	30-8980, 32128-2, 32128-20, 32128-20, 445722	Nut - Serrated Washer	2	<b>0.66</b>	
75	<b>R112-8935</b>	112-8935	Frame - Center - 27 in Unit	1	<b>377.65</b>	

All original equipment manufacturers names and part numbers are used for identification purposes only, and we are in no way implying that our products are original equipment parts. Prices subject to change without notice.