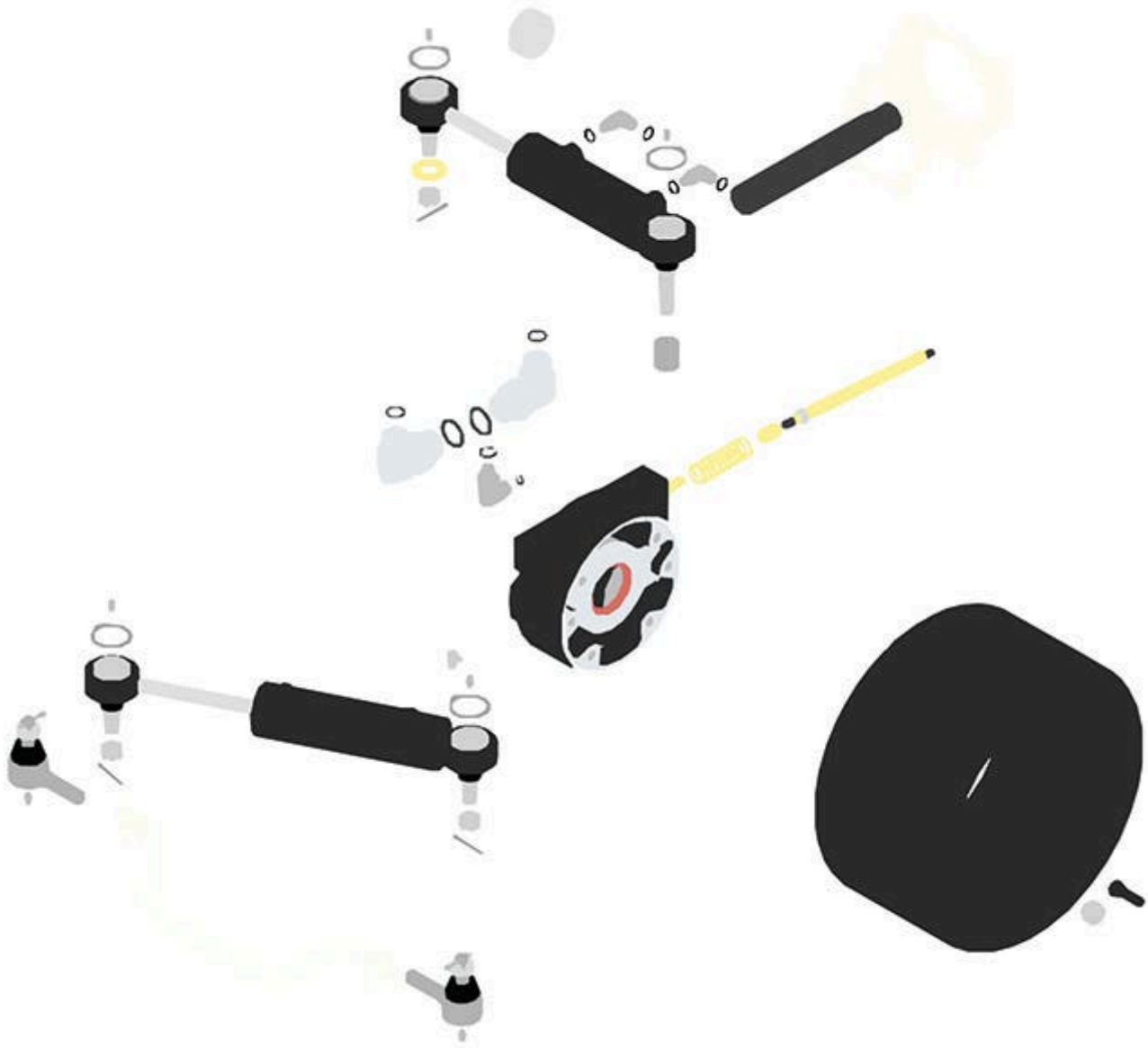




Replaces Toro Reelmaster 6700D Parts

*Traction Unit
Wheels*



All original equipment manufacturers names and part numbers are used for identification purposes only, and we are in no way implying that our products are original equipment parts. Prices subject to change without notice.



Replaces Toro Reelmaster 6700D Parts

Traction Unit
Wheels



Item No	R&R Part No.	OEM Part No.	Description	Qty Req	Price Each	Order Quantity
Overhaul Kits						
1	R107-0245	107-0245	Seal Kit - Fits R105-0775 Hyd Cyl	0	58.70	
41	R100-2582	100-2582, 217-120, 217-125	Rim - Rear Tire 10 x 7	0	33.90	
42	R232-24	232-24, 232-35	Stem - Valve w/ Cap	0	3.25	
Other Parts Available						
70	R107-1976	107-1976	Cylinder - Steering	1	447.65	
71	R106-6774	106-6774, 92-5838, 92-5838-01	Ball Joint	3	48.65	
72	R32151-104	32151-104	Ring - Retaining, Ex	3	4.35	
73	R302-5	21-6010, 302-11, 302-37, 302-47, 302-5, 302-57, 302-58, 302-6, 31-0300, 32-9660, 60-0800, 62-3880, 92-4181	Fitting - Grease	6	0.27	
74	R92-5836	92-5836	Flat Washer - Hardened	1	4.10	
75	R100-3795	100-3795	Ball Joint	2	59.15	
76	R3272-11	01-151-0010, 01-151-0040, 28-18-D, 28-28-D, 3211-72, 3272-11	Pin - Cotter	3	0.70	

All original equipment manufacturers names and part numbers are used for identification purposes only, and we are in no way implying that our products are original equipment parts. Prices subject to change without notice.



Replaces Toro Reelmaster 6700D Parts

Traction Unit
Wheels



Item No	R&R Part No.	OEM Part No.	Description	Qty Req	Price Each	Order Quantity
77	R340-97	340-97	Hydraulic Fitting - 90 Deg	2	15.55	
78	R237-22	107-8844, 237-22, 237-78	O-Ring	5	0.62	
79	R323016	302-33, 323016	Zerk - Grease	1	0.80	
80	R100-3070-03	100-3070-03	Brake Assy - LH	1	618.10	
80	R100-3069-03	100-3069-03	Brake Assy - RH	1	618.10	
81	R94-8141	94-8141	Hydraulic Cylinder	1	442.65	
82	R106-1113	100-3852, 106-1113	Tie Rod End Assy RH Thread	2	149.90	
83	R340-142	340-142, 95-1692	Hydraulic Fitting - 90 Deg	2	36.05	
84	R340-18	340-18	Hydraulic Fitting	1	20.95	
85	R237-58	237-58	O-Ring	5	0.78	
86	R237-81	237-81, 237.81, 327-81	O-Ring	2	2.30	
87	R94-3088	94-3088	Spring - Compression	2	6.05	
88	R92-7530	92-7530	Brake Cable Assy - LH	1	88.25	
88	R92-7529	92-7529	Brake Cable Assy - RH	1	88.25	
89	R115-9142	115-9142	Pin - Rear Axle	1	72.95	
90	R237-79	237-79	O-Ring	1	1.50	
91	R99-7534	99-7534	Bearing - Double Row Ball	1	52.50	
92	R100-3796	100-3796	Spacer - Ball Joint	1	17.50	

All original equipment manufacturers names and part numbers are used for identification purposes only, and we are in no way implying that our products are original equipment parts. Prices subject to change without notice.



Replaces Toro Reelmaster 6700D Parts

*Traction Unit
Wheels*



Item No	R&R Part No.	OEM Part No.	Description	Qty Req	Price Each	Order Quantity
93	R242-50	242-50	Nut - 1/2-20 Wheel	10	1.50	

All original equipment manufacturers names and part numbers are used for identification purposes only, and we are in no way implying that our products are original equipment parts. Prices subject to change without notice.