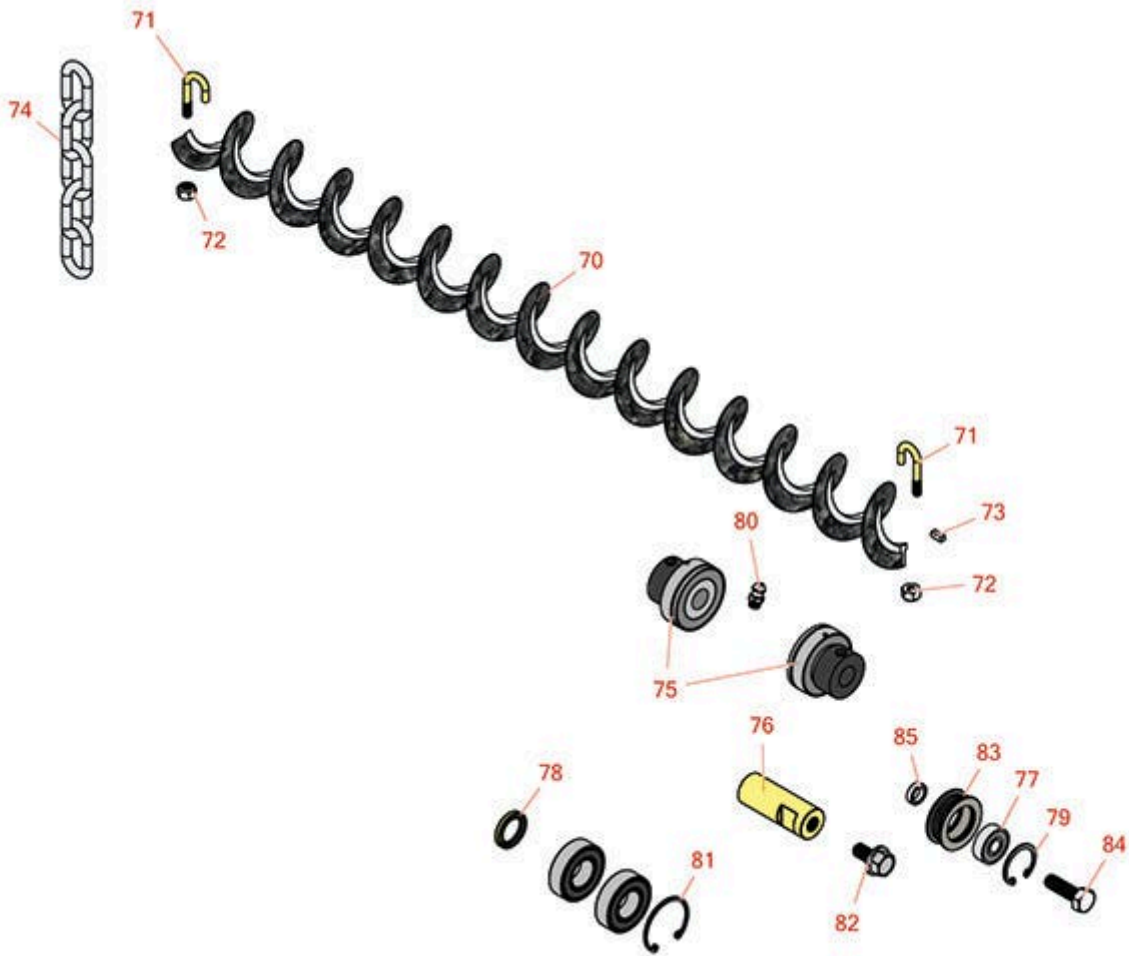




# Replaces Toro Reelmaster 6500D Parts

Cutting Unit - Models 03860, 03861 & 03862

Rear Roller Brush - Model 03876



All original equipment manufacturers names and part numbers are used for identification purposes only, and we are in no way implying that our products are original equipment parts. Prices subject to change without notice.



# Replaces Toro Reelmaster 6500D Parts

Cutting Unit - Models 03860, 03861 & 03862

Rear Roller Brush - Model 03876



Item No	R&R Part No.	OEM Part No.	Description	Qty Req	Price Each	Order Quantity
---------	--------------	--------------	-------------	---------	------------	----------------

## Other Parts Available

70	<b>R105-6792</b>	104-1829, 105-6792	Brush - Rear Roller	1	<b>50.20</b>	
71	<b>R104-1830</b>	104-1830	Bolt - J	2	<b>4.60</b>	
72	<b>R3296-2</b>	32127-10, 3296-2, 9157404	Nut - #10 Lock	2	<b>0.94</b>	
73	<b>R95-9619</b>	95-9619	Key - Square 1/8 x 1/8 x 5/16	2	<b>0.91</b>	
74	<b>R84-2451</b>	84-2451	Chain - Straight 5	1	<b>4.75</b>	
75	<b>R104-1842</b>	104-1842	Bearing - Roller	2	<b>28.25</b>	
76	<b>R104-1837</b>	104-1837	Spacer-Threaded	1	<b>31.55</b>	
77	<b>R251-259</b>	251-259, 251-307	Bearing - Ball	1	<b>11.25</b>	
78	<b>R253-83</b>	253-83	Seal - Oil 7/8 OD x 5/8 ID	1	<b>6.25</b>	
79	<b>R104-4727</b>	104-4727	Ring - Retaining	1	<b>0.81</b>	
80	<b>R302-5</b>	21-6010, 302-11, 302-37, 302-47, 302-5, 302-57, 302-58, 302-6, 31-0300, 32-9660, 60-0800, 62-3880, 92-4181	Fitting - Grease	2	<b>0.27</b>	
81	<b>R458461</b>	32151-34	Snap Ring	1	<b>1.10</b>	
82	<b>R3234-14</b>	3234-14, 3234-23	Bolt - Hex Serrated Washer HD	8	<b>0.83</b>	

All original equipment manufacturers names and part numbers are used for identification purposes only, and we are in no way implying that our products are original equipment parts. Prices subject to change without notice.



## Replaces Toro Reelmaster 6500D Parts

Cutting Unit - Models 03860, 03861 & 03862

Rear Roller Brush - Model 03876



Item No	R&R Part No.	OEM Part No.	Description	Qty Req	Price Each	Order Quantity
83	<b>R104-1834</b>	104-1820, 104-1834	Idler Bearing - Assy	1	<b>51.15</b>	
84	<b>R322-5</b>	01-178-0508, 20-26-AD, 20-26-AGD, 30-9000, 322-5, 513341, 519755, 908019P, N/A	Bolt - Hex HD 5/16-18 x 1	3	<b>0.40</b>	
85	<b>R82-4240</b>	82-4240	Spacer - Bearing	1	<b>3.25</b>	

All original equipment manufacturers names and part numbers are used for identification purposes only, and we are in no way implying that our products are original equipment parts. Prices subject to change without notice.