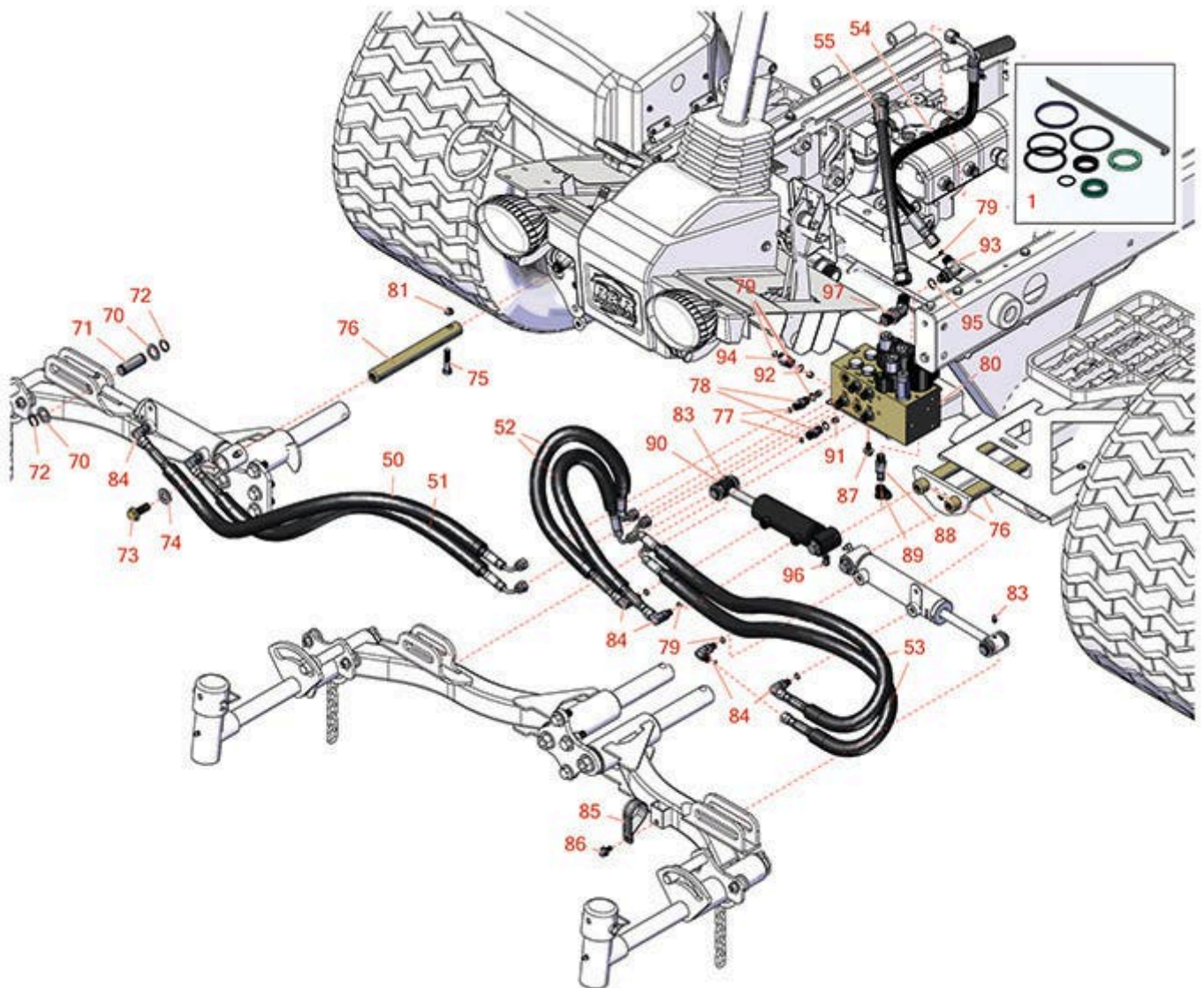




Replaces Toro Reelmaster 5510-G Parts

Traction Unit
Hydraulic Cylinders



All original equipment manufacturers names and part numbers are used for identification purposes only, and we are in no way implying that our products are original equipment parts. Prices subject to change without notice.



Replaces Toro Reelmaster 5510-G Parts

*Traction Unit
Hydraulic Cylinders*



Item No	R&R Part No.	OEM Part No.	Description	Qty Req	Price Each	Order Quantity
1	R119-6992	119-6992	Seal Kit - Fits R119-6987 & R119-6988 Cylinder	1	89.40	
Hoses						
50	R106-3692	106-3692	Hydraulic Hose Assy	1	53.95	
51	R106-3693	106-3693	Hydraulic Hose Assy	1	66.55	
52	R93-6887	93-6887	Hydraulic Hose Assy	2	36.50	
53	R85-4940	85-4940	Hydraulic Hose Assy	2	61.95	
54	R92-5694	92-5694	Hydraulic Hose Assy	1	59.35	
55	R117-0180	117-0180	Hydraulic Hose Assy	1	58.95	
Other Parts Available						
70	R3-6498	3--6498, 3-6498, 47-8270	Washer - Thrust	4	4.10	
71	R104-0046	104-0046	Pin - Slide - Cylinder	2	7.15	
72	R32120-93	32120-93	Snap Ring - HD	4	1.20	
73	R3234-38	3234-38	Bolt - Flanged Hex 1/2-13 x 1-1/4	2	3.55	
74	R453017	01-166-0050, 01-166-0240, 01-166-0800, 24-13-AD, 24-14-AD, 32-8110, 3256-26, 3256-6, 453017, 69-8980, 87-7270	Washer - Flat 1/2	2	0.28	

All original equipment manufacturers names and part numbers are used for identification purposes only, and we are in no way implying that our products are original equipment parts. Prices subject to change without notice.



Replaces Toro Reelmaster 5510-G Parts

*Traction Unit
Hydraulic Cylinders*



Item No	R&R Part No.	OEM Part No.	Description	Qty Req	Price Each	Order Quantity
75	R323-9	01-150-0190, 01-150-1540, 01-178-0614, 107229, 20-50-AD, 20-50-AGD, 30-9430, 32105-4, 3224-5, 323-9, 513363, 513364, 5377, 908037P	Bolt - Hex HD 3/8-16 x 1-3/4	2	0.91	
76	R117-0148	117-0148	Pin - Hyd Cyl	2	29.30	
77	R237-21	237-21, 327-21	O-Ring	4	0.47	
78	R340-92	340-92	Hydraulic Fitting - Striaght	2	6.95	
79	R237-22	107-8844, 237-22, 237-78	O-Ring	2	0.62	
80	R105-7577	105-7577	Manifold Assy - Lift Blocks	1	1845.95	
81	R3296-59	3296-59	Locknut - 3/8-16 Nylon Jam	2	0.65	
83	R302-5	21-6010, 302-11, 302-37, 302-47, 302-5, 302-57, 302-58, 302-6, 31-0300, 32-9660, 60-0800, 62-3880, 92-4181	Fitting - Grease	2	0.27	
84	R340-132	340-132	Hydraulic Fitting - 90 Deg	1	14.40	

All original equipment manufacturers names and part numbers are used for identification purposes only, and we are in no way implying that our products are original equipment parts. Prices subject to change without notice.



Replaces Toro Reelmaster 5510-G Parts

*Traction Unit
Hydraulic Cylinders*



Item No	R&R Part No.	OEM Part No.	Description	Qty Req	Price Each	Order Quantity
85	R2412-137	2412-137	Clamp-R, Double	1	5.05	
86	R32144-14	32104-32, 32104-49, 32144-14	Bolt - Hex Washer 5/16-18 x 5/8	1	2.45	
87	R3234-14	3234-14, 3234-23	Bolt - Hex Serrated Washer HD	2	0.83	
88	R59-7410	59-7410	Tip-Nipple	5	20.15	
89	R354-79	354-79	Cap-Dust	1	4.85	
90	R119-6988	119-6988	Hydraulic Cylinder	1	349.60	
91	R110-8903	110-8903	Orifice-Control, F	3	31.55	
92	R110-8902	110-8902	Orifice-Control, F	4	32.25	
93	R340-18	340-18	Hydraulic Fitting	1	20.95	
94	R340-88	340-88	Connector - Male	1	8.40	
95	R237-79	237-79	O-Ring	2	1.50	
96	R323016	302-33, 323016	Zerk - Grease	2	0.80	
97	R340-101	340-101	Hydraulic Fitting	1	17.15	

All original equipment manufacturers names and part numbers are used for identification purposes only, and we are in no way implying that our products are original equipment parts. Prices subject to change without notice.