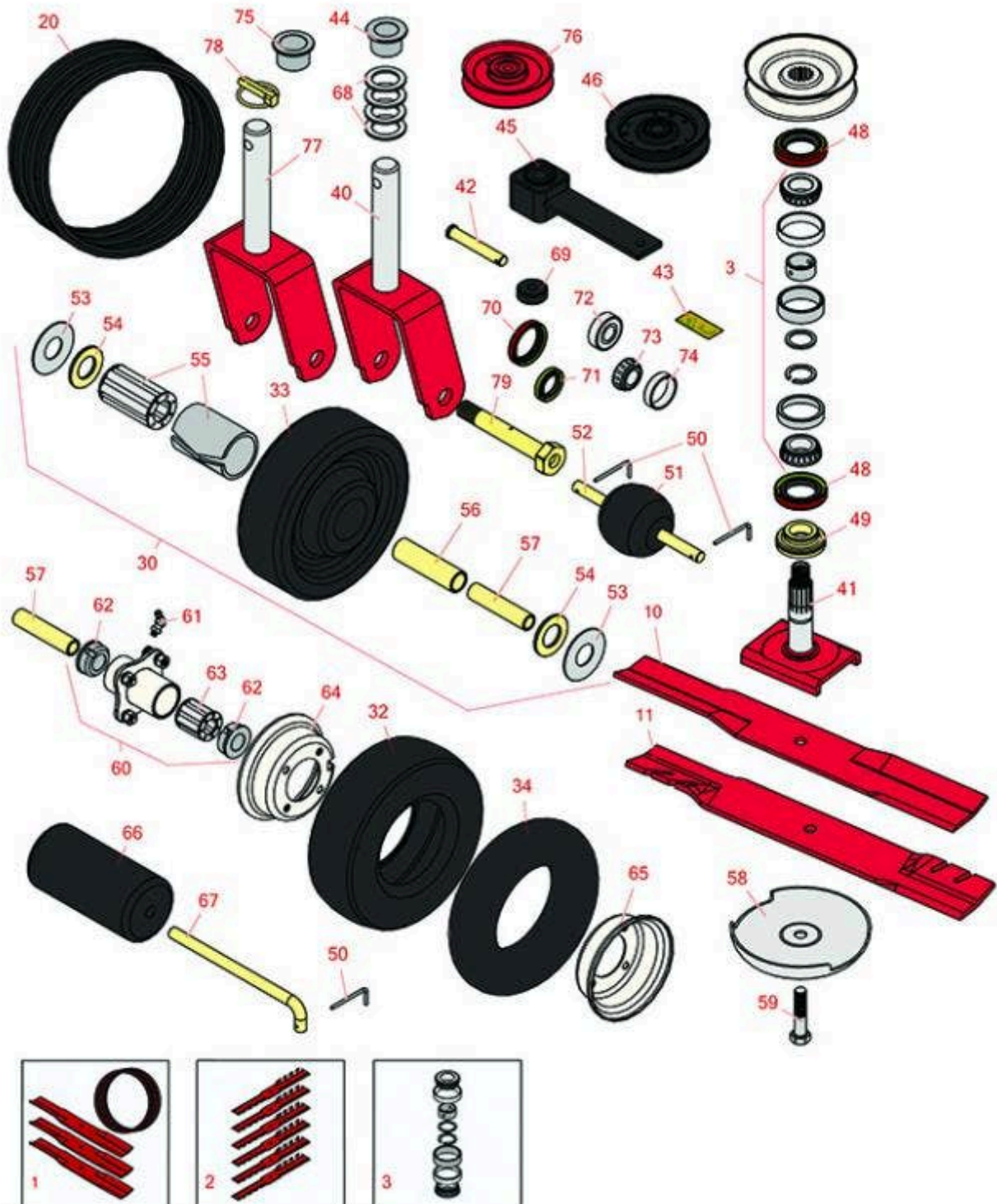




Replaces Toro Groundsmaster 224

Parts

Rotary Mower - Models 30224
52in Deck - Model 30568



All original equipment manufacturers names and part numbers are used for identification purposes only, and we are in no way implying that our products are original equipment parts. Prices subject to change without notice.



Replaces Toro Groundsmaster 224 Parts

Rotary Mower - Models 30224
52in Deck - Model 30568



Item No	R&R Part No.	OEM Part No.	Description	Qty Req	Price Each	Order Quantity
---------	--------------	--------------	-------------	---------	------------	----------------

Overhaul Kits

1	R95-3070	95-3070	Kit - Blade and Belt	1	0.00	
---	-----------------	---------	----------------------	---	-------------	--

Tech Note: Includes: 3 ea: R27-0990 Rotary Blades & 1 ea. R27-1160 Deck Belt.:

2	R108-1477	108-1477	Mower Blade Kit - Gator Mulching Set/6	1	0.00	
---	------------------	----------	--	---	-------------	--

Tech Note: Includes 6 ea: R104-1301 Gator Mulching Rotary Blades:

3	R46-8530	27-0960, 46-8530	Bearing - Set with Rings/Spacers	3	46.95	
---	-----------------	---------------------	----------------------------------	---	--------------	--

Tech Note: Includes 2 ea: R254-72 Bearings, R254-94 Cones, Spacers & Rings:

Rotary Blades

10	R27-0990	27-0990, 27-0990-03	Mower Blade	3	16.15	
----	-----------------	------------------------	-------------	---	--------------	--

11	R27-0990M	104-1301	Mower Blade - Gator Mulcher	3	18.15	
----	------------------	----------	-----------------------------	---	--------------	--

11	R104-1301	104-1301	Mower Blade - Gator Mulcher	3	15.70	
----	------------------	----------	-----------------------------	---	--------------	--

20	R150515	27-1160	Belt - Deck Gm 52	1	50.80	
----	----------------	---------	-------------------	---	--------------	--

Tires

30	R104-3441	104-3441	Wheel - Solid Phenolic Assy	2	97.35	
----	------------------	----------	-----------------------------	---	--------------	--

32	RCT5120081	68-8960	Tire - 8x3.00-4 Nhs (4 Ply) Carlisle Smooth	2	19.90	
----	-------------------	---------	---	---	--------------	--

33	R27-1190	27-1190	Wheel Only - Gm 52 Deck	2	42.35	
----	-----------------	---------	-------------------------	---	--------------	--

34	R68-8950	68-8950	Tube - Castor Wheel 9x3.50-4 TR87	2	5.45	
----	-----------------	---------	-----------------------------------	---	-------------	--

Other Parts Available

40	R68-8900-01	68-8900, 68-8900-01	Caster Fork - Use w/Pneumatic Tire	2	51.25	
----	--------------------	------------------------	------------------------------------	---	--------------	--

41	R27-0920	27-0920	Spindle - Splined - 4-5/8 in	3	73.95	
----	-----------------	---------	------------------------------	---	--------------	--

All original equipment manufacturers names and part numbers are used for identification purposes only, and we are in no way implying that our products are original equipment parts. Prices subject to change without notice.



Replaces Toro Groundsmaster 224 Parts

Rotary Mower - Models 30224
52in Deck - Model 30568



Item No	R&R Part No.	OEM Part No.	Description	Qty Req	Price Each	Order Quantity
42	R283-55	283-55	Clevis Pin - 1/2 x 3	4	6.30	
43	R93-6696	93-6696	Decal - Warning	2	8.75	
44	R94-1291	94-1291	Bushing - Flanged	4	6.30	
45	R27-8580	100-6178, 27-1060, 27-8580, 99-1297	Socket - Idler	1	54.25	
46	R65-5940	65-5940	Pulley - Idler	1	21.45	
48	R253-139	253-139	Seal - Spindle	6	5.40	
49	R27-0950	27-0950	Spacer - Bearing	3	24.95	
50	R57-0690	57-0690	Pin - Roller Shaft	2	3.65	
51	R29-4820	29-4820	Roller	2	16.55	
52	R40-6400	40-6400	Shaft - Roller	1	13.35	
53	R27-1170	27-1170	Washer - Thrust	2	1.60	
54	R27-1180	27-1180	Washer - Brg. Retainer	2	1.60	
55	R27-1210	27-1210	Bearing - w/Sleeve	2	17.85	
56	R27-1200	27-1200, 46-8640, 54-8860	Spacer - Front Deck Wheel	2	8.05	
57	R68-8980	68-8980	Bushing - Spanner Wheel	2	6.90	
58	R72-9361	27-1000, 27-1001, 72-9360, 72-9361	Cup - Anti-Scalp	3	21.60	
59	R92-5816	92-5816	Bolt - Hex HD 1/2-20 x 2-1/4	3	4.15	
60	R68-8940	68-8940	Hub Assy - w/Brgs	2	18.65	

All original equipment manufacturers names and part numbers are used for identification purposes only, and we are in no way implying that our products are original equipment parts. Prices subject to change without notice.



Replaces Toro Groundsmaster 224 Parts

Rotary Mower - Models 30224
52in Deck - Model 30568



Item No	R&R Part No.	OEM Part No.	Description	Qty Req	Price Each	Order Quantity
61	R700414	302-11, 302-19, 302-4, 32-8170	Zerk - Grease 1/4-28 45 Deg	2	0.76	
62	R62-5580	62-5530, 62-5580	Bearing - Flanged - Caster	4	2.95	
63	R62-5570	62-5570	Bearing - Castor Wheel	2	7.40	
64	R68-8920	68-8920	Wheel - Half w/Valve Hole	2	12.40	
65	R68-8930	68-8930	Wheel - Half Male	2	12.40	
66	R36-1740	36-1740	Roller - Rotary Deck	2	21.25	
67	R40-0340	40-0340	Shaft - Rear Roller	2	22.30	
68	R3-6781	3-6781	Washer - Thrust - Castor Wheel	8	1.85	
69	R63-9750	63-9750, 64-9750	Mount - Rubber	4	11.75	
70	R253-137	253-137	Seal - Gear Box	2	4.85	
71	R364170	253-118, 62-3400	Seal	2	5.45	
72	R38-7820	251-277, 251-5, 38-7820	Bearing - Ball	1	4.80	
73	R254-68	254-68, 62-3370	Tapered Bearing Cone	2	7.25	
74	R254-67	254-67, 62-3360	Cup - Bearing	2	4.20	
75	R28-9290	28-9290	Bushing - Steel Castor	4	7.15	
76	R52-4580	27-1080, 52-4580	Pulley - Idler	1	24.65	
77	R40-0370	40-0370	Caster Fork -Use w/Solid Wheel	2	61.15	

All original equipment manufacturers names and part numbers are used for identification purposes only, and we are in no way implying that our products are original equipment parts. Prices subject to change without notice.



Replaces Toro Groundsmaster 224 Parts



*Rotary Mower - Models 30224
52in Deck - Model 30568*

Item No	R&R Part No.	OEM Part No.	Description	Qty Req	Price Each	Order Quantity
78	R3290-384	3290-384	Pin - Lynch Heavy Duty	2	6.25	
79	R46-8140	46-8140	Axle - Assy w/Nut	2	27.65	

All original equipment manufacturers names and part numbers are used for identification purposes only, and we are in no way implying that our products are original equipment parts. Prices subject to change without notice.