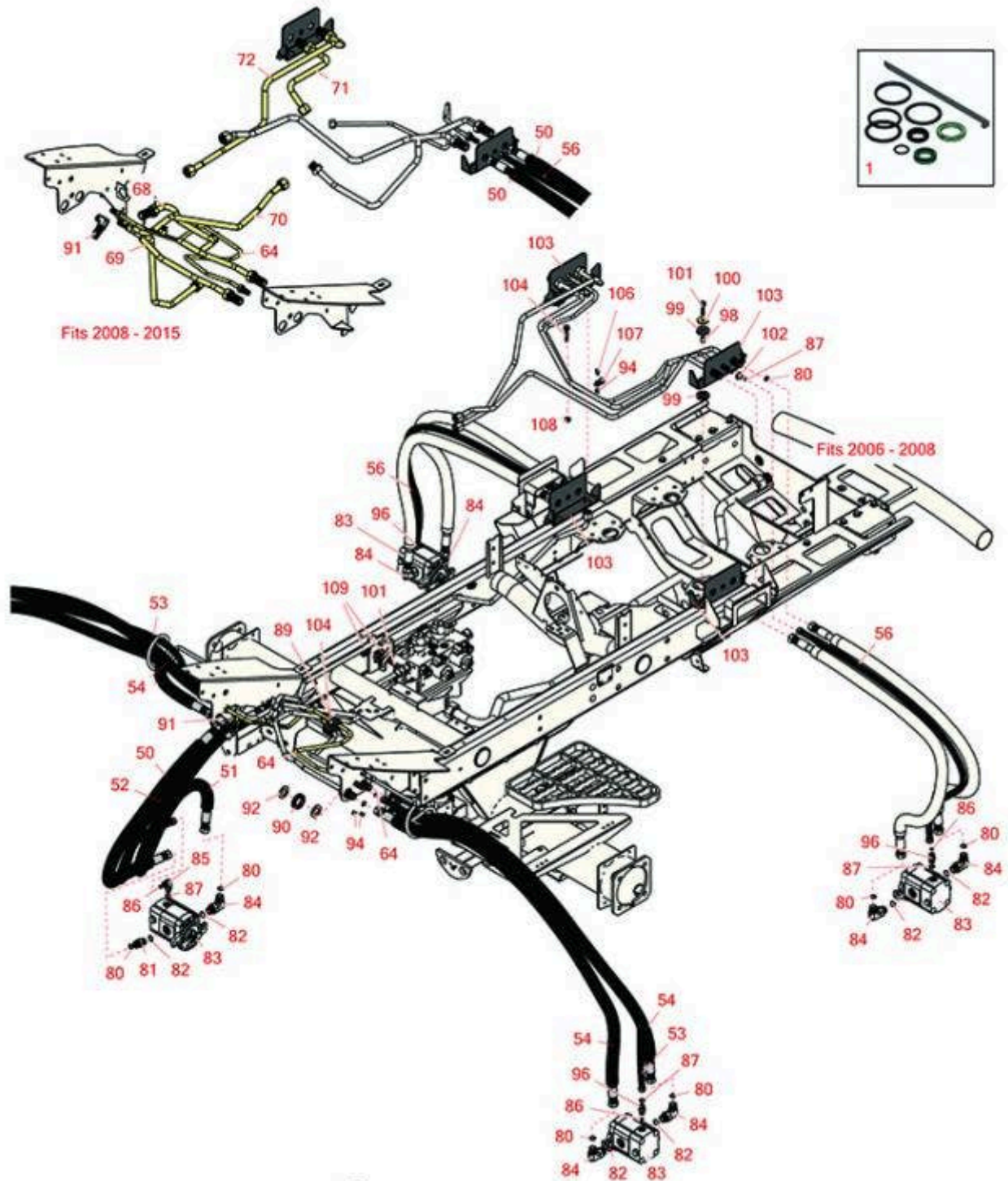




Replaces Toro Reelmaster 5410-D Parts

*Traction Unit - with Yanmar Engine
Reel Hydraulics*



All original equipment manufacturers names and part numbers are used for identification purposes only, and we are in no way implying that our products are original equipment parts. Prices subject to change without notice.



Replaces Toro Reelmaster 5410-D Parts

*Traction Unit - with Yanmar Engine
Reel Hydraulics*



Item No	R&R Part No.	OEM Part No.	Description	Qty Req	Price Each	Order Quantity
---------	--------------	--------------	-------------	---------	------------	----------------

Overhaul Kits and Service Tools

1	R119-6992	119-6992	Seal Kit - Fits R119-6987 & R119-6988 Cylinder	1	89.40	
---	------------------	----------	--	---	--------------	--

Hoses

50	R114-0633	114-0633	Hydraulic Hose Assy	1	124.75	
51	R117-5190	117-5190	Hydraulic Hose Assy	1	128.40	
52	R106-3671	106-3671	Hydraulic Hose Assy	1	47.65	
53	R106-3680	106-3680	Hose	2	44.85	
54	R117-5188	117-5188	Hydraulic Hose Assy	4	160.95	
56	R98-4590	98-4590	Hydraulic Hose Assy	2	45.40	
64	R110-5286	110-5286	Tube Assy	1	169.70	
68	R117-0137	117-0137	Tube Assy	1	114.35	
69	R117-0138	117-0138	Tube Assy	1	107.25	
70	R117-0139	117-0139	Tube Assy - Hyd	1	109.30	
71	R117-0140	117-0140	Tube Assy	1	86.75	
72	R117-0141	117-0141	Tube Assy	1	100.35	

Other Parts Available

80	R237-30	23-6320, 237-30	O-Ring - Seal	10	0.78	
81	R340-4	340-4	Hydraulic Fitting - Male Connector	1	7.95	
82	R237-79	237-79	O-Ring	10	1.50	

All original equipment manufacturers names and part numbers are used for identification purposes only, and we are in no way implying that our products are original equipment parts. Prices subject to change without notice.



Replaces Toro Reelmaster 5410-D Parts

*Traction Unit - with Yanmar Engine
Reel Hydraulics*



Item No	R&R Part No.	OEM Part No.	Description	Qty Req	Price Each	Order Quantity
83	R120-2072	100-6426, 108-6487, 112-9200, 120-2072, 93-1375	Hydraulic Gear Motor	5	360.90	
84	R340-98	340-98	Hydraulic Fitting	9	15.60	
85	R340-132	340-132	Hydraulic Fitting - 90 Deg	1	14.40	
86	R237-21	237-21, 327-21	O-Ring	1	0.47	
87	R237-22	107-8844, 237-22, 237-78	O-Ring	5	0.62	
89	R56-7972	56-7972	Clamp - Tube	2	13.60	
89	R56-7970	56-7970	Plastic Clamp	2	11.25	
90	R240-3	240-3	Grommet- Rubber	5	9.60	
92	R69-9010	69-9010, 9-9010	Washer	4	2.40	
91	R340-72	340-72, 96-0865	Fitting-Bulkhead,	1	27.90	
94	R104-7201	104-7201	Locknut - 1/4-20 ESNA Flanged	4	0.62	
96	R340-92	340-92	Hydraulic Fitting - Striaight	1	6.95	
98	R99-8611	99-8611	Spacer	4	3.85	
99	R240-11	240-11	Bushing - Rubber - Flanged	8	2.45	
100	R105-3048	105-3048	Washer - Flat	4	0.95	
101	R32144-57	32144-57	Bolt - Hex Washer 5/16-18 x 1-1/2	4	1.45	
102	R340-78	340-78	Nut - Lock Bulkhead	4	2.30	
103	R117-0174-03	117-0174-03	Bracket-Bulkhead	2	38.75	

All original equipment manufacturers names and part numbers are used for identification purposes only, and we are in no way implying that our products are original equipment parts. Prices subject to change without notice.



Replaces Toro Reelmaster 5410-D Parts

*Traction Unit - with Yanmar Engine
Reel Hydraulics*



Item No	R&R Part No.	OEM Part No.	Description	Qty Req	Price Each	Order Quantity
104	R94-5780	94-5780	Bolt - 5/16-18 x 1 3/4 Hx Fl	1	2.35	
106	R3234-5	3234-5, 62-3310	Bolt - 5/16-18x3/4 Hx Ser Was HD	1	0.74	
107	R2412-89	2412-113, 2412-89	Clamp	1	2.15	
108	R104-8300	104-8300, 104-8300 , 119-4041	Locknut - 5/16-18 Flanged Y/Zinc	2	0.47	
109	R56-7973	56-7973	Clamp - Tube	2	13.95	

All original equipment manufacturers names and part numbers are used for identification purposes only, and we are in no way implying that our products are original equipment parts. Prices subject to change without notice.