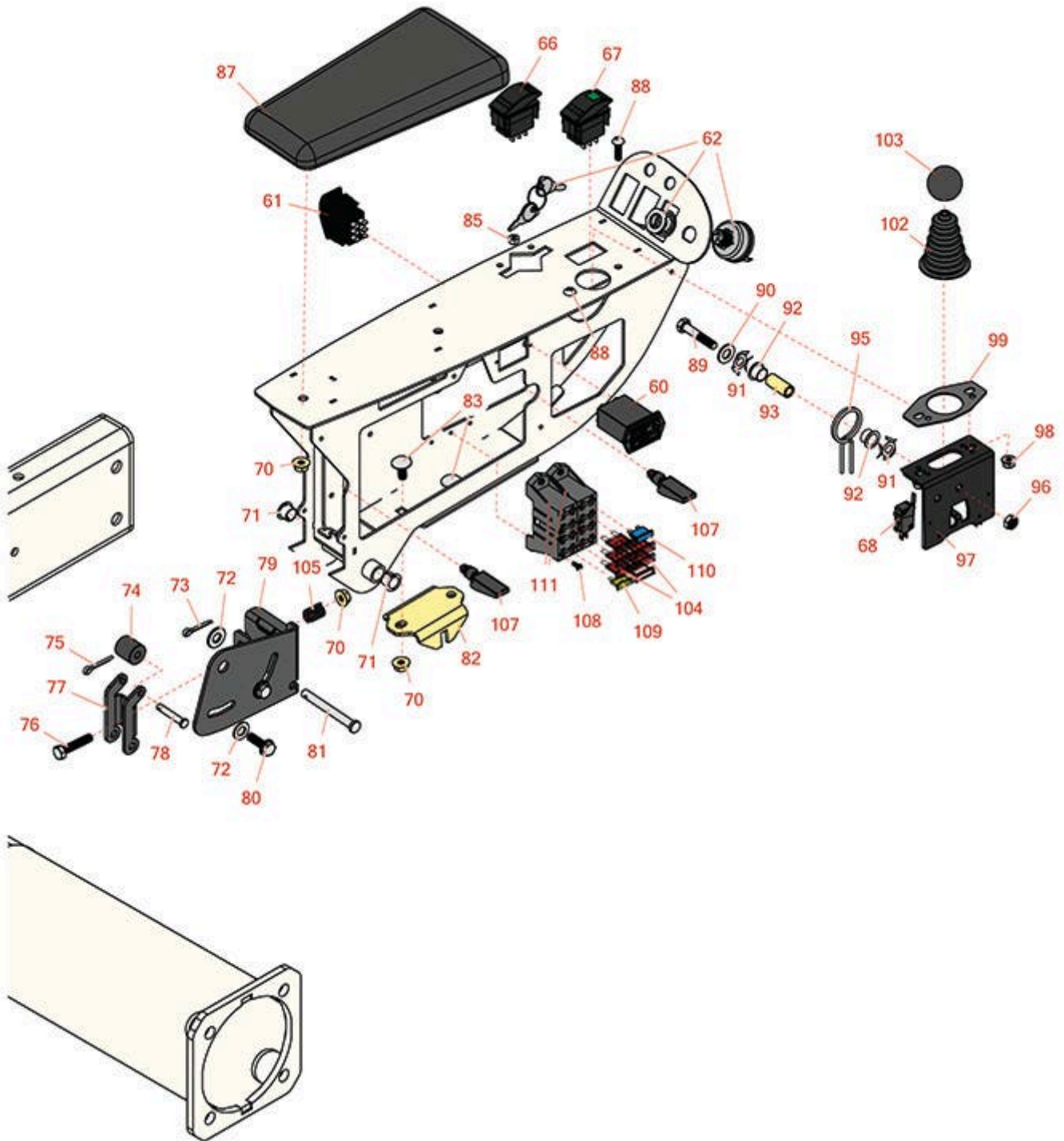




Replaces Toro Reelmaster 5410-D Parts

*Traction Unit - with Yanmar Engine
Console & Control Arm*



All original equipment manufacturers names and part numbers are used for identification purposes only, and we are in no way implying that our products are original equipment parts. Prices subject to change without notice.



Replaces Toro Reelmaster 5410-D Parts

*Traction Unit - with Yanmar Engine
Console & Control Arm*



Item No	R&R Part No.	OEM Part No.	Description	Qty Req	Price Each	Order Quantity
Gauges and Controls						
60	R75-6820	75-6820	Meter - Hour - Quartz	1	59.85	
61	R95-8999	95-8999	Switch - Headlight	1	28.80	
62	R151386	106-5269	Ignition Switch Assy	1	81.80	
66	R100-1535	100-1535, 100-8492	Switch	1	60.05	
67	R105-4232	105-4232	Switch - Enable-Disable	1	48.75	
68	R108-6496	108-6496	Micro Switch w/Boot	2	11.30	
Other Parts Available						
70	R104-8300	104-8300, 104-8300 , 119-4041	Locknut - 5/16-18 Flanged Y/Zinc	5	0.47	
71	R256-257	256-257, 256-295	Nyliner Bushing	2	2.45	
72	R453009	01-166-0400, 24-10-BD, 24-9-AD, 32-9650, 3256-2, 3256-23, 3256-3, 3256-67, 3290-217, 3556-3, 4-2390, 7-0152	Washer - Flat 5/16 SAE	2	0.13	
73	R3272-10	01-151-0120, 105-7512, 3272-10, N/A	Pin - Cotter 1/8 x 3/4	1	0.13	
74	R110-8856	110-8856	Spacer	1	13.95	

All original equipment manufacturers names and part numbers are used for identification purposes only, and we are in no way implying that our products are original equipment parts. Prices subject to change without notice.



Replaces Toro Reelmaster 5410-D Parts

*Traction Unit - with Yanmar Engine
Console & Control Arm*



Item No	R&R Part No.	OEM Part No.	Description	Qty Req	Price Each	Order Quantity
75	R3272-1	3272-1, 3272-51, 352-111, 352-142, 58-1480	Pin-Cotter	1	0.22	
76	R322-7	01-150-0750, 01-150-0760, 01-178-0512, 20-28-AD, 20-28-AGD, 322-7, 3223-4	Bolt - Hex HD 5/16-18 x 1-1/2	1	0.62	
77	R110-5314	110-5314	Latch	1	14.20	
78	R283-73	283-73	Pin-Clevis	1	1.30	
79	R110-5313-03	110-5313-03	Bracket - Retainer	1	21.75	
80	R3234-29	3234-17, 3234-29	Bolt - 5/16-18x1 Serr Hex	2	1.65	
81	R283-88	283-88	Pin-Clevis	1	2.30	
82	R110-5340	110-5340	Latch Assy	1	19.55	
83	R3230-23	3230-23, Mar-61	Bolt - 5/16-18x3/4 - Carriage	2	0.70	
85	R3296-12	32127-20, 3296-12	Nut - 10-32 Nylon Lock	2	0.55	
87	R108-7602	108-7602	Arm Rest	1	58.70	
88	R3258-166	3258-166	Screw-Ph Rnd HD	2	0.24	
89	R19H3130	322-9, 3223-5	Bolt - Hex HD 5/16-18 x 1-3/4	1	0.84	

All original equipment manufacturers names and part numbers are used for identification purposes only, and we are in no way implying that our products are original equipment parts. Prices subject to change without notice.



Replaces Toro Reelmaster 5410-D Parts

*Traction Unit - with Yanmar Engine
Console & Control Arm*



Item No	R&R Part No.	OEM Part No.	Description	Qty Req	Price Each	Order Quantity
90	R453011	01-166-0100, 01-166-0120, 01-166-0270, 01-166-0500, 01-166-0600, 01-166-0620, 132-4593, 2356-3, 237-12, 24-10-AD, 24-11-AD, 24-11-BD, 24-12-AD, 24-12-BD, 30-9310, 32-8190, 3256-24, 3256-3, 3256-36, 3256-4, 453011, 47-9950, 48-9220, 513458, 7-0052	Washer - Flat 3/8 SAE Y/Zinc	1	0.11	
91	R106-4193	106-4193	Washer - Finger, Spr	2	3.45	
92	R93-5547	93-5547	Bushing-Nylon	2	4.70	
92	R106-4192	106-4192	Spacer	1	4.55	
95	R105-8289	105-8289, 93-5509	Spring-Torsion	1	9.55	
96	R3296-29	1-804256, 3290-357, 3296-29, 915662P	Locknut - 5/16-18 ESNA	1	2.95	
97	R115-5357-03	115-5357-03	Bracket - Joystick	1	22.10	
98	R104-7201	104-7201	Locknut - 1/4-20 ESNA Flanged	2	0.62	
99	R112-9181	106-4188-03, 112-9181	Plate-Boot	1	2.95	

All original equipment manufacturers names and part numbers are used for identification purposes only, and we are in no way implying that our products are original equipment parts. Prices subject to change without notice.



Replaces Toro Reelmaster 5410-D Parts

*Traction Unit - with Yanmar Engine
Console & Control Arm*



Item No	R&R Part No.	OEM Part No.	Description	Qty Req	Price Each	Order Quantity
102	R93-5961	93-5961	Dust Guard - Shifter	1	30.95	
103	R233-42	1-603175, 120-9752, 233-42, 233-47	Knob	1	6.80	
104	R218-578	218-578, 95-2438	Fuse - 10 Amp	6	1.45	
105	R110-5331	110-5331	Spring - Compression	1	11.55	
107	R74-5950	249-48, 74-5950	Latch - Swell	2	13.15	
108	R150291	32144-87	Screw - 8 x 1/2 Sheet Metal	4	0.18	
109	R150812	109102, 109355, 150812, 218-581	Fuse - 15 Amp	1	2.45	
110	R94-6710	94-6710	Fuse-Blade, 2 Amp	1	2.35	
111	R85-4650	85-4650	Fuse Holder Block	2	10.25	

All original equipment manufacturers names and part numbers are used for identification purposes only, and we are in no way implying that our products are original equipment parts. Prices subject to change without notice.