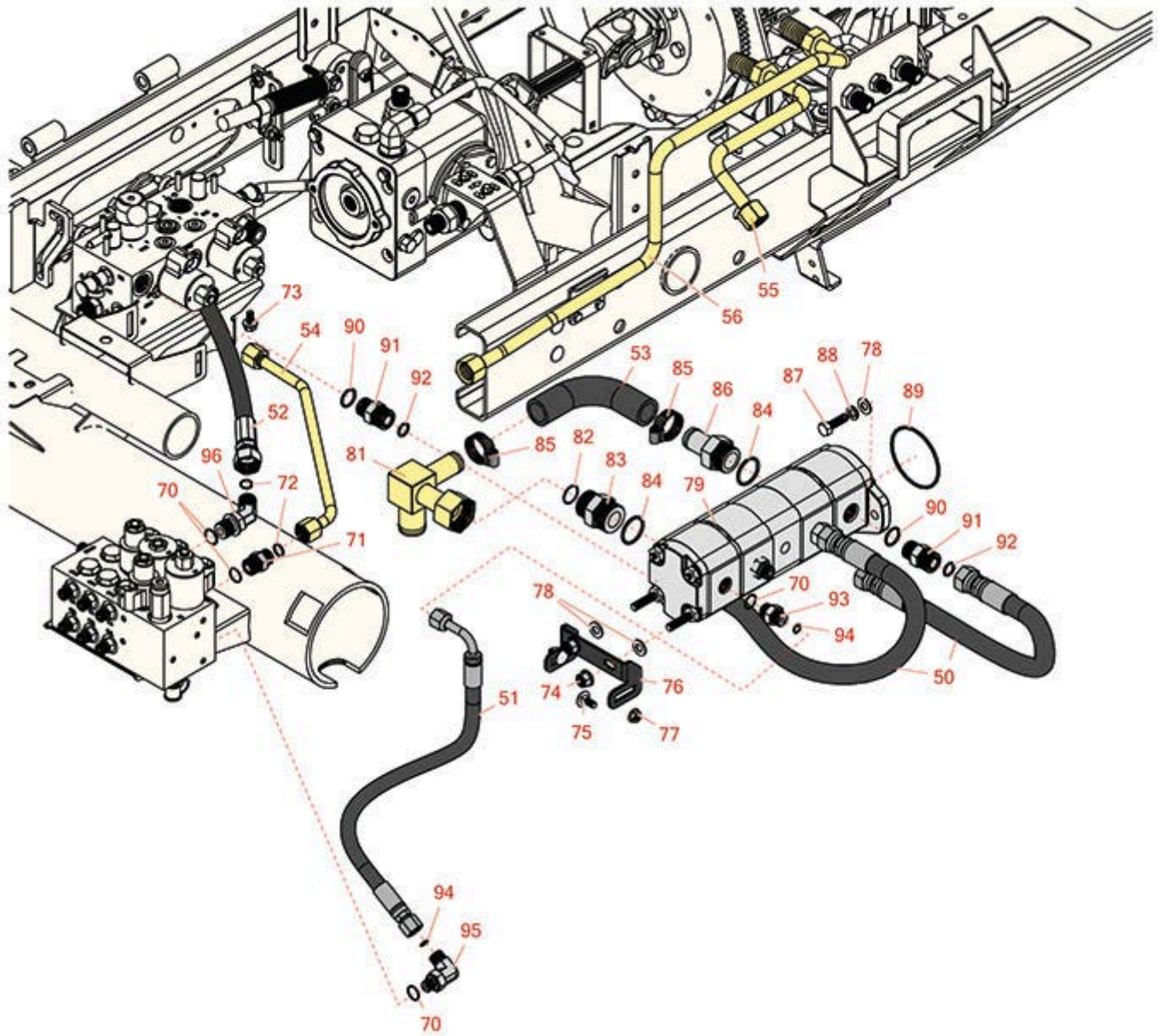




# Replaces Toro Reelmaster 5410-D Parts

*Traction Unit - with Yanmar Engine  
Gear Pump & Hydraulics*



All original equipment manufacturers names and part numbers are used for identification purposes only, and we are in no way implying that our products are original equipment parts. Prices subject to change without notice.



# Replaces Toro Reelmaster 5410-D Parts

*Traction Unit - with Yanmar Engine  
Gear Pump & Hydraulics*



Item No	R&R Part No.	OEM Part No.	Description	Qty Req	Price Each	Order Quantity
<b>Hoses</b>						
50	<b>R108-1686</b>	108-1686	Hydraulic Hose Assy	2	<b>69.25</b>	
51	<b>R107-1135</b>	107-1135	Hydraulic Hose Assy	1	<b>57.15</b>	
52	<b>R117-0180</b>	117-0180	Hydraulic Hose Assy	1	<b>58.95</b>	
53	<b>R108-1683</b>	108-1683	Hose - Formed	1	<b>29.10</b>	
54	<b>R108-1698</b>	108-1698	Tube Assy	1	<b>43.20</b>	
55	<b>R117-0140</b>	117-0140	Tube Assy	1	<b>86.75</b>	
56	<b>R117-0141</b>	117-0141	Tube Assy	1	<b>100.35</b>	
<b>Other Parts Available</b>						
70	<b>R237-79</b>	237-79	O-Ring	3	<b>1.50</b>	
71	<b>R340-4</b>	340-4	Hydraulic Fitting - Male Connector	1	<b>7.95</b>	
72	<b>R237-30</b>	23-6320, 237-30	O-Ring - Seal	1	<b>0.78</b>	
73	<b>R3234-14</b>	3234-14, 3234-23	Bolt - Hex Serrated Washer HD	2	<b>0.83</b>	
74	<b>R103-9511</b>	103-9511	Nut - Lock	2	<b>1.20</b>	
75	<b>R3230-1</b>	01-173-0506, 3230-1, 3230-20, 900037P	Bolt - Carriage 5/16-18 x 3/4	2	<b>0.62</b>	
76	<b>R108-1801-01</b>	108-1801-01	Bracket-Support - Pump	1	<b>18.65</b>	
77	<b>R104-8300</b>	104-8300, 104-8300 , 119-4041	Locknut - 5/16-18 Flanged Y/Zinc	2	<b>0.47</b>	

All original equipment manufacturers names and part numbers are used for identification purposes only, and we are in no way implying that our products are original equipment parts. Prices subject to change without notice.



# Replaces Toro Reelmaster 5410-D Parts

*Traction Unit - with Yanmar Engine  
Gear Pump & Hydraulics*



Item No	R&R Part No.	OEM Part No.	Description	Qty Req	Price Each	Order Quantity
78	<b>R453011</b>	01-166-0100, 01-166-0120, 01-166-0270, 01-166-0500, 01-166-0600, 01-166-0620, 132-4593, 2356-3, 237-12, 24-10-AD, 24-11-AD, 24-11-BD, 24-12-AD, 24-12-BD, 30-9310, 32-8190, 3256-24, 3256-3, 3256-36, 3256-4, 453011, 47-9950, 48-9220, 513458, 7-0052	Washer - Flat 3/8 SAE Y/Zinc	4	<b>0.11</b>	
79	<b>R105-7576</b>	105-7576	Gear Pump Assy	1	<b>2718.25</b>	
81	<b>R108-1672</b>	108-1672	Manifold-Tube	1	<b>146.10</b>	
82	<b>R340-65</b>	340-65	O-Ring	1	<b>0.86</b>	
83	<b>R104-3797</b>	104-3797	Hydraulic Fitting - Striaght	1	<b>19.90</b>	
84	<b>R237-146</b>	237-146, 340-146	O-Ring	2	<b>1.45</b>	
85	<b>R2412-34</b>	2412-34, 31-0120	Clamp - Hose .75-1.5	1	<b>1.50</b>	
86	<b>R354-78</b>	354-78	Connector-Hose	1	<b>27.35</b>	
87	<b>R3274-1</b>	3274-1	Bolt - 3/8-16 x 1 1/4 Soc HD Cap	2	<b>4.95</b>	

All original equipment manufacturers names and part numbers are used for identification purposes only, and we are in no way implying that our products are original equipment parts. Prices subject to change without notice.



# Replaces Toro Reelmaster 5410-D Parts

*Traction Unit - with Yanmar Engine  
Gear Pump & Hydraulics*



Item No	R&R Part No.	OEM Part No.	Description	Qty Req	Price Each	Order Quantity
88	<b>R3254-6</b>	01-166-0010, 01-166-0280, 01-166-0610, 3253-5, 3254-18, 3254-6, 3290-223, 48-9370	Washer - Lock 3/8	2	<b>0.08</b>	
89	<b>R237-161</b>	237-161	O-Ring	1	<b>3.65</b>	
90	<b>R237-80</b>	237-80, 327-80	O-Ring	4	<b>1.85</b>	
91	<b>R340-7</b>	340-7	Adapter	4	<b>9.65</b>	
92	<b>R237-65</b>	237-65, 237.65	O-Ring	4	<b>0.65</b>	
93	<b>R340-3</b>	340-3	Hydraulic Fitting - Adapter Connector	2	<b>8.05</b>	
94	<b>R237-22</b>	107-8844, 237-22, 237-78	O-Ring	4	<b>0.62</b>	
95	<b>R340-18</b>	340-18	Hydraulic Fitting	1	<b>20.95</b>	
96	<b>R340-101</b>	340-101	Hydraulic Fitting	1	<b>17.15</b>	

All original equipment manufacturers names and part numbers are used for identification purposes only, and we are in no way implying that our products are original equipment parts. Prices subject to change without notice.