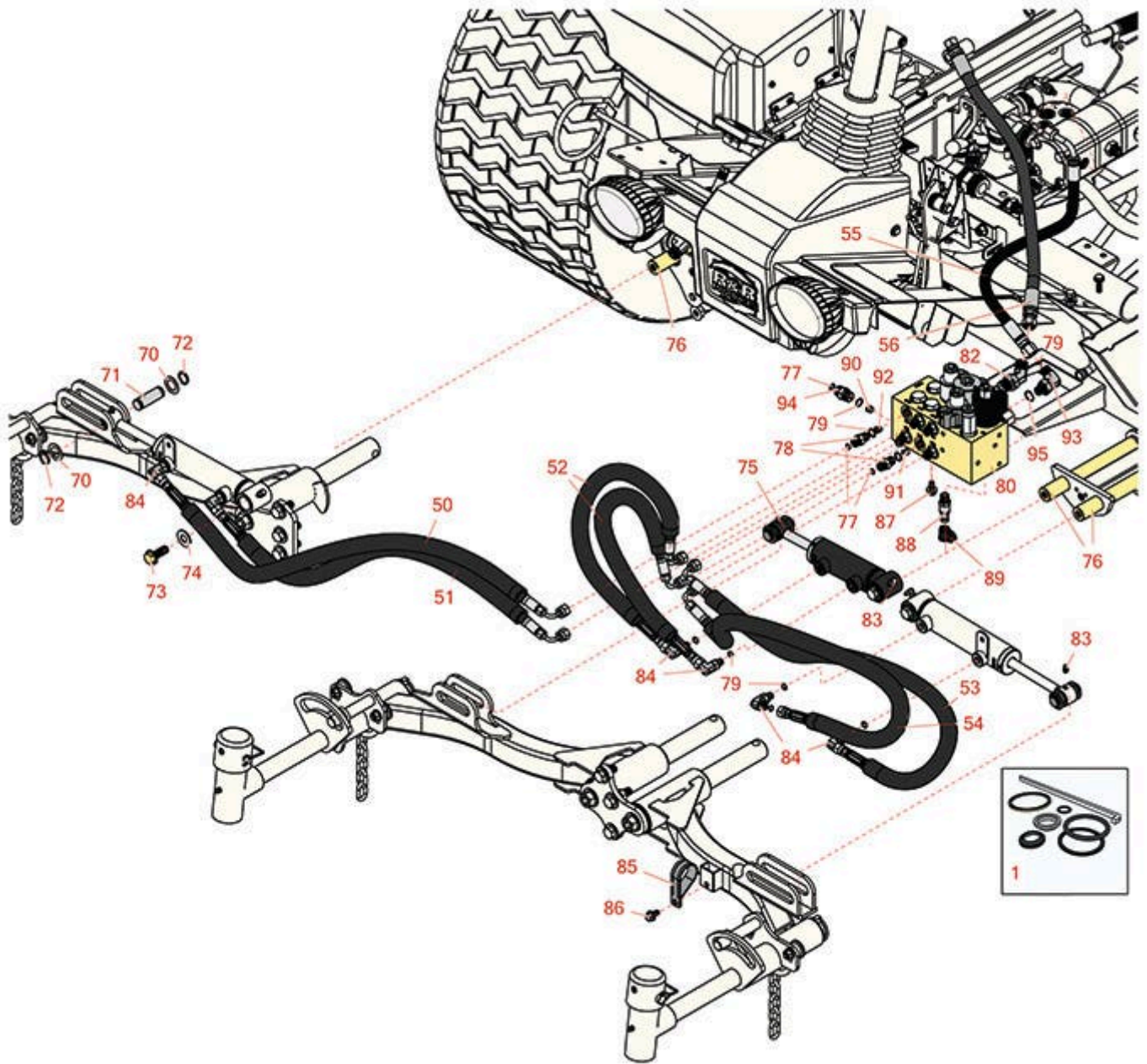
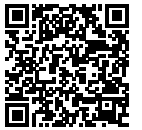




Replaces Toro Reelmaster 5410-D Parts

Traction Unit - with Yanmar Engine
Front Lift Cylinder & Plumbing



All original equipment manufacturers names and part numbers are used for identification purposes only, and we are in no way implying that our products are original equipment parts. Prices subject to change without notice.



Replaces Toro Reelmaster 5410-D Parts

*Traction Unit - with Yanmar Engine
Front Lift Cylinder & Plumbing*



Item No	R&R Part No.	OEM Part No.	Description	Qty Req	Price Each	Order Quantity
Overhaul Kits						
1	R110-6460	110-6460	Seal Kit	1	51.05	
Hoses						
50	R106-3692	106-3692	Hydraulic Hose Assy	1	53.95	
51	R106-3693	106-3693	Hydraulic Hose Assy	1	66.55	
52	R93-6887	93-6887	Hydraulic Hose Assy	2	36.50	
53	R85-4940	85-4940	Hydraulic Hose Assy	1	61.95	
54	R106-3691	106-3691	Hydraulic Hose Assy	1	50.95	
55	R92-5694	92-5694	Hydraulic Hose Assy	1	59.35	
56	R117-0180	117-0180	Hydraulic Hose Assy	1	58.95	
Other Parts Available						
70	R3-6498	3--6498, 3-6498, 47-8270	Washer - Thrust	6	4.10	
71	R104-0046	104-0046	Pin - Slide - Cylinder	3	7.15	
72	R32120-93	32120-93	Snap Ring - HD	6	1.20	
73	R3234-38	3234-38	Bolt - Flanged Hex 1/2-13 x 1-1/4	6	3.55	
74	R453017	01-166-0050, 01-166-0240, 01-166-0800, 24-13-AD, 24-14-AD, 32-8110, 3256-26, 3256-6, 453017, 69-8980, 87-7270	Washer - Flat 1/2	3	0.28	

All original equipment manufacturers names and part numbers are used for identification purposes only, and we are in no way implying that our products are original equipment parts. Prices subject to change without notice.



Replaces Toro Reelmaster 5410-D Parts

*Traction Unit - with Yanmar Engine
Front Lift Cylinder & Plumbing*



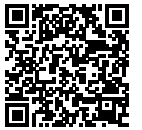
Item No	R&R Part No.	OEM Part No.	Description	Qty Req	Price Each	Order Quantity
75	R119-6988	119-6988	Hydraulic Cylinder	1	349.60	
76	R117-0148	117-0148	Pin - Hyd Cyl	3	29.30	
77	R237-21	237-21, 327-21	O-Ring	12	0.47	
78	R340-92	340-92	Hydraulic Fitting - Striaight	6	6.95	
79	R237-22	107-8844, 237-22, 237-78	O-Ring	13	0.62	
80	R105-7577	105-7577	Manifold Assy - Lift Blocks	1	1845.95	
82	R340-101	340-101	Hydraulic Fitting	1	17.15	
83	R302-5	21-6010, 302-11, 302-37, 302-47, 302-5, 302-57, 302-58, 302-6, 31-0300, 32-9660, 60-0800, 62-3880, 92-4181	Fitting - Grease	3	0.27	
84	R340-132	340-132	Hydraulic Fitting - 90 Deg	6	14.40	
85	R2412-137	2412-137	Clamp-R, Double	1	5.05	
86	R32144-14	32104-32, 32104-49, 32144-14	Bolt - Hex Washer 5/16-18 x 5/8	1	2.45	
87	R3234-14	3234-14, 3234-23	Bolt - Hex Serrated Washer HD	2	0.83	
88	R59-7410	59-7410	Tip-Nipple	1	20.15	
89	R354-79	354-79	Cap-Dust	1	4.85	

All original equipment manufacturers names and part numbers are used for identification purposes only, and we are in no way implying that our products are original equipment parts. Prices subject to change without notice.



Replaces Toro Reelmaster 5410-D Parts

*Traction Unit - with Yanmar Engine
Front Lift Cylinder & Plumbing*



Item No	R&R Part No.	OEM Part No.	Description	Qty Req	Price Each	Order Quantity
90	R110-8902	110-8902	Orifice-Control, F	2	32.25	
91	R110-8903	110-8903	Orifice-Control, F	3	31.55	
92	R110-8904	110-8904	Orifice-Control, F	3	31.55	
93	R340-18	340-18	Hydraulic Fitting	1	20.95	
94	R340-88	340-88	Connector - Male	2	8.40	
95	R237-79	237-79	O-Ring	1	1.50	

All original equipment manufacturers names and part numbers are used for identification purposes only, and we are in no way implying that our products are original equipment parts. Prices subject to change without notice.