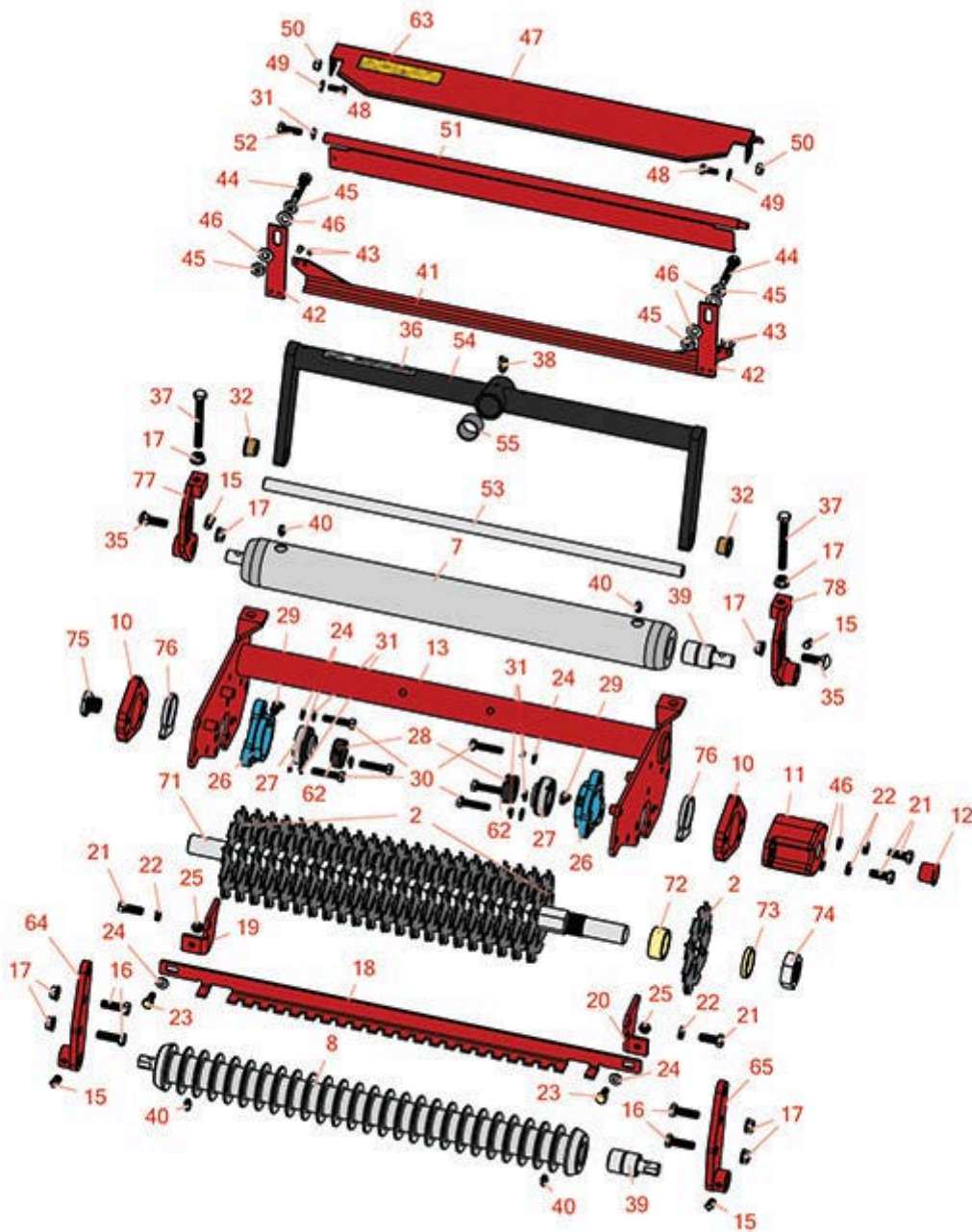




# Replaces Toro Reelmaster 5400D Parts

Dethatching Unit - Model 03516  
Dethatching Reel & Frame



All original equipment manufacturers names and part numbers are used for identification purposes only, and we are in no way implying that our products are original equipment parts. Prices subject to change without notice.



# Replaces Toro Reelmaster 5400D Parts

Dethatching Unit - Model 03516

Dethatching Reel & Frame



Item No	R&R Part No.	OEM Part No.	Description	Qty Req	Price Each	Order Quantity
---------	--------------	--------------	-------------	---------	------------	----------------

## Overhaul Kits

1	<b>R106-6392</b>	106-6392	Verti-Cut Blade Kit - 2mm Carbide Tipped	1	<b>0.00</b>	
---	------------------	----------	--	---	-------------	--

*Tech Note: Includes Carbide Tipped Blades to rebuild 3 dethatching reels: 108 ea: R150209C Vertical Mower Blade:*

## Verti-Cut Blades

2	<b>R17-1590</b>	17-1590	Verti-Cut Blade	24	<b>3.95</b>	
2	<b>R150109C</b>	106-5422	Verti-Cut Blade - Carbide Tipped 1.2mm	24	<b>12.35</b>	
2	<b>R150209C</b>	106-6355	Verti-Cut Blade - Carbide Tipped 2mm	24	<b>11.95</b>	

## R&R Rollers

7	<b>R82-6680</b>	82-6680	Roller - Smooth Tubular Steel	1	<b>175.90</b>	
8	<b>R75-1520</b>	75-1520	Roller - Grooved Machined Solid Steel	0	<b>239.55</b>	

*Tech Note: Machined from solid steel this heavy weight roller uses greasable "water-pump" style bearings. :*

## Other Parts Available

10	<b>R82-6810</b>	82-6810, 82-6810-01	Plate - Blade Shaft Bearing	2	<b>44.20</b>	
11	<b>R10-5080</b>	10-5080, 10-5080-01	End - Cap Reel Brg Housing	1	<b>47.10</b>	
12	<b>R12-0460</b>	12-0460	Caplug - End Cap	1	<b>0.98</b>	
13	<b>R82-6710</b>	82-6710	Frame	1	<b>209.30</b>	
15	<b>R3242-2</b>	3242-2	Screw - 5/16-18 x 1/2 Sq HD Set	4	<b>1.35</b>	

All original equipment manufacturers names and part numbers are used for identification purposes only, and we are in no way implying that our products are original equipment parts. Prices subject to change without notice.



# Replaces Toro Reelmaster 5400D Parts

*Dethatching Unit - Model 03516*

*Dethatching Reel & Frame*



Item No	R&R Part No.	OEM Part No.	Description	Qty Req	Price Each	Order Quantity
16	<b>R400264</b>	01-150-0180, 01-178-0610, 20-48-AD, 20-48-AGD, 32-9160, 3224-3, 323-29, 323-7, 400264, 908035P	Bolt - Hex HD 3/8-16 x 1-1/4	4	<b>0.40</b>	
17	<b>R3296-39</b>	32127-25, 32128-36, 3290-357, 3296-17, 3296-22, 3296-39, 915663P, 99-7443	Locknut - 3/8-16 Nylon	8	<b>1.40</b>	
18	<b>R82-6830</b>	82-6830, 82-6830-01	Bar - Scraper Grooved Roller	1	<b>14.20</b>	
19	<b>R82-6870</b>	82-6870, 82-6870-01	Bracket - Scraper RH	1	<b>6.55</b>	
20	<b>R82-6880</b>	82-6880, 82-6880-01	Bracket - Scraper LH	1	<b>6.55</b>	
21	<b>R323-6</b>	01-150-0010, 01-178-0608, 20-47-AD, 20-47-AGD, 3224-2, 323-6, 49-3510, 908034P, 908332	Bolt - Hex HD 3/8-16 x 1 GR5 YZ	4	<b>0.59</b>	
22	<b>R3253-21</b>	215-51, 30-8470, 3253-21, Jul-12	Washer - Lock 3/8	4	<b>0.14</b>	

All original equipment manufacturers names and part numbers are used for identification purposes only, and we are in no way implying that our products are original equipment parts. Prices subject to change without notice.



# Replaces Toro Reelmaster 5400D Parts

*Dethatching Unit - Model 03516*

*Dethatching Reel & Frame*



Item No	R&R Part No.	OEM Part No.	Description	Qty Req	Price Each	Order Quantity
23	<b>R322-3</b>	01-150-1420, 01-178-0506, 20-24-AD, 20-24-AGD, 322-3, 48-9270, 513339, 908017P	Bolt - Hex HD 5/16-18 x 3/4	2	<b>0.62</b>	
24	<b>R310266</b>	3256-23, 3256-3, 3556-3	Washer - Flat 5/16 USS	8	<b>0.23</b>	
<i>Tech Note: Use with scraper &amp; O.E.M. bearing housing:</i>						
24	<b>R453009</b>	01-166-0400, 24-10-BD, 24-9-AD, 32-9650, 3256-2, 3256-23, 3256-3, 3256-67, 3290-217, 3556-3, 4-2390, 7-0152	Washer - Flat 5/16 SAE	6	<b>0.13</b>	
<i>Tech Note: Use with R&amp;R housings:</i>						
25	<b>R3296-29</b>	1-804256, 3290-357, 3296-29, 915662P	Locknut - 5/16-18 ESNA	2	<b>2.95</b>	
26	<b>R76-2460</b>	76-2460	Bearing - Flange	2	<b>34.40</b>	
27	<b>R251-337</b>	251-337	Bearing - Ball	2	<b>19.40</b>	
28	<b>R3245-35</b>	3245-35	Screw - Set 1/4-28 x 1/4	2	<b>0.57</b>	
29	<b>R700414</b>	302-11, 302-19, 302-4, 32-8170	Zerk - Grease 1/4-28 45 Deg	6	<b>0.76</b>	

All original equipment manufacturers names and part numbers are used for identification purposes only, and we are in no way implying that our products are original equipment parts. Prices subject to change without notice.



# Replaces Toro Reelmaster 5400D Parts

*Dethatching Unit - Model 03516*

*Dethatching Reel & Frame*



Item No	R&R Part No.	OEM Part No.	Description	Qty Req	Price Each	Order Quantity
30	<b>R322-7</b>	01-150-0750, 01-150-0760, 01-178-0512, 20-28-AD, 20-28-AGD, 322-7, 3223-4	Bolt - Hex HD 5/16-18 x 1-1/2	6	<b>0.62</b>	
30	<b>RP3018-1</b>		Bolt - Hex HD 5/16-18 x 1-1/4	6	<b>0.35</b>	
31	<b>R3253-4</b>	01-166-0110, 01-166-0510, 23-10-GD, 24-7170, 30-8520, 3253-4, 42-9850, 48-9350, 48-9360, 48-9570, 68-9420, 99-7577	Washer - Lock 5/16 Zinc	7	<b>0.14</b>	
32	<b>R3-1506</b>	3-1506, 75-2160, Apr-50	Bushing - Bronze	2	<b>3.05</b>	
35	<b>R3231-25</b>	01-173-0610, 30-9970, 3231-25, 3231-3, 900064P	Bolt - Carriage 3/8-16 x 1-1/4	2	<b>0.66</b>	
36	<b>R67-7960</b>	27-2890, 62-5070, 67-7960	Decal - Warning	1	<b>2.75</b>	
37	<b>R323-49</b>	323-49	Bolt - HOC 3/8-16 x 3 1/2	2	<b>2.75</b>	
38	<b>R302-60</b>	302-60	Zerk - Grease 90 Deg.	1	<b>0.68</b>	
39	<b>R75-1290</b>	75-1290	Bearing - Roller	4	<b>21.20</b>	

All original equipment manufacturers names and part numbers are used for identification purposes only, and we are in no way implying that our products are original equipment parts. Prices subject to change without notice.



# Replaces Toro Reelmaster 5400D Parts

*Dethatching Unit - Model 03516*

*Dethatching Reel & Frame*



Item No	R&R Part No.	OEM Part No.	Description	Qty Req	Price Each	Order Quantity
40	<b>R302-5</b>	21-6010, 302-11, 302-37, 302-47, 302-5, 302-57, 302-58, 302-6, 31-0300, 32-9660, 60-0800, 62-3880, 92-4181	Fitting - Grease	4	<b>0.27</b>	
41	<b>R82-6740</b>	82-6740	Scraper - Assy	1	<b>33.55</b>	
42	<b>R82-6770</b>	82-6770, 82-6770-01	Spring - Scraper	2	<b>4.90</b>	
43	<b>R3269-4</b>	3269-3, 3269-4	Rivet - Rear Deflector	4	<b>0.34</b>	
44	<b>R323-53</b>	323-53, 57-3210	Bolt - Hex HD 3/8-16 x 1-3/4	2	<b>1.35</b>	
45	<b>R3218-3</b>	01-191-0616, 22-13-AJKD, 3218-3, 915236P	Nut - 3/8-16 Jam	4	<b>0.39</b>	

All original equipment manufacturers names and part numbers are used for identification purposes only, and we are in no way implying that our products are original equipment parts. Prices subject to change without notice.



# Replaces Toro Reelmaster 5400D Parts

*Dethatching Unit - Model 03516*

*Dethatching Reel & Frame*



Item No	R&R Part No.	OEM Part No.	Description	Qty Req	Price Each	Order Quantity
46	<b>R453011</b>	01-166-0100, 01-166-0120, 01-166-0270, 01-166-0500, 01-166-0600, 01-166-0620, 132-4593, 2356-3, 237-12, 24-10-AD, 24-11-AD, 24-11-BD, 24-12-AD, 24-12-BD, 30-9310, 32-8190, 3256-24, 3256-3, 3256-36, 3256-4, 453011, 47-9950, 48-9220, 513458, 7-0052	Washer - Flat 3/8 SAE Y/Zinc	6	<b>0.11</b>	
47	<b>R75-1840</b>	75-1840	Shield - Grass	1	<b>48.70</b>	
48	<b>R321-4</b>	01-150-1030, 01-178-0406, 20-3-AGD, 321-4, 3222-1	Bolt - Hex HD 1/4-20 x 3/4	2	<b>0.52</b>	
49	<b>R3256-22</b>	24-9-BD, 3-1032, 3256-1, 3256-22, 93-0954, 93-0989	Washer - Flat 1/4 Yellow	2	<b>0.12</b>	

All original equipment manufacturers names and part numbers are used for identification purposes only, and we are in no way implying that our products are original equipment parts. Prices subject to change without notice.



# Replaces Toro Reelmaster 5400D Parts

*Dethatching Unit - Model 03516*

*Dethatching Reel & Frame*



Item No	R&R Part No.	OEM Part No.	Description	Qty Req	Price Each	Order Quantity
50	<b>R301504</b>	2296-42, 301504, 32127-24, 32128-33, 32146-17, 3296-16, 3296-42, 3296-42 , 915661P	Locknut - ESNA 1/4-20	2	<b>0.18</b>	
51	<b>R82-6780</b>	82-6780, 82-6780-01	Deflector - Rear	1	<b>47.25</b>	
52	<b>R322-5</b>	01-178-0508, 20-26-AD, 20-26-AGD, 30-9000, 322-5, 513341, 519755, 908019P, N/A	Bolt - Hex HD 5/16-18 x 1	1	<b>0.40</b>	
53	<b>R75-1710</b>	75-1710	Rod - Support Cutting Unit	1	<b>22.95</b>	
54	<b>R82-6540</b>	100-6193, 100-6194, 82-6540, 82-6540-03	Frame - Carrier Cutting Unit	1	<b>191.95</b>	
55	<b>R67-1750</b>	67-1750	Bushing - 1 Long	2	<b>1.85</b>	
62	<b>R251-77</b>	251-77	Collar - Bearing	2	<b>5.05</b>	
63	<b>R93-6688</b>	93-6688	Decal - Warning	1	<b>2.30</b>	
64	<b>R82-6510</b>	82-6510, 82-6510-01	Support - Right Hgt of Cut	1	<b>31.80</b>	
65	<b>R82-6530</b>	82-6530, 82-6530-01	Support - Left Height of Cut	1	<b>31.80</b>	
71	<b>R82-6570</b>	82-6570	Shaft - V-Cut	1	<b>98.20</b>	
72	<b>R82-6600</b>	82-6600	Spacer - V-Cut	23	<b>3.25</b>	

All original equipment manufacturers names and part numbers are used for identification purposes only, and we are in no way implying that our products are original equipment parts. Prices subject to change without notice.





## Replaces Toro Reelmaster 5400D Parts

*Dethatching Unit - Model 03516*

*Dethatching Reel & Frame*



Item No	R&R Part No.	OEM Part No.	Description	Qty Req	Price Each	Order Quantity
73	<b>R17-1600</b>	17-1600	Spacer - V-Cut Reel 1/4	2	<b>2.55</b>	
74	<b>R3220-18</b>	3220-18, 67-5840	Nut - Jam V-Cut Shaft	1	<b>4.85</b>	
75	<b>R77-0340</b>	77-0340	Nut - Splined Reel	1	<b>15.10</b>	
75	<b>R93-1394</b>	93-1394	Nut - Splined RH Thrd .812 Long	1	<b>12.25</b>	
76	<b>R82-6820</b>	82-6820	Spacer - Bearing	2	<b>4.35</b>	
77	<b>R82-6630</b>	82-6630, 82-6630-01	Bracket - RH Height of Cut	1	<b>43.65</b>	
78	<b>R82-6650</b>	82-6650, 82-6650-01	Bracket - LH Height of Cut	1	<b>40.55</b>	

All original equipment manufacturers names and part numbers are used for identification purposes only, and we are in no way implying that our products are original equipment parts. Prices subject to change without notice.