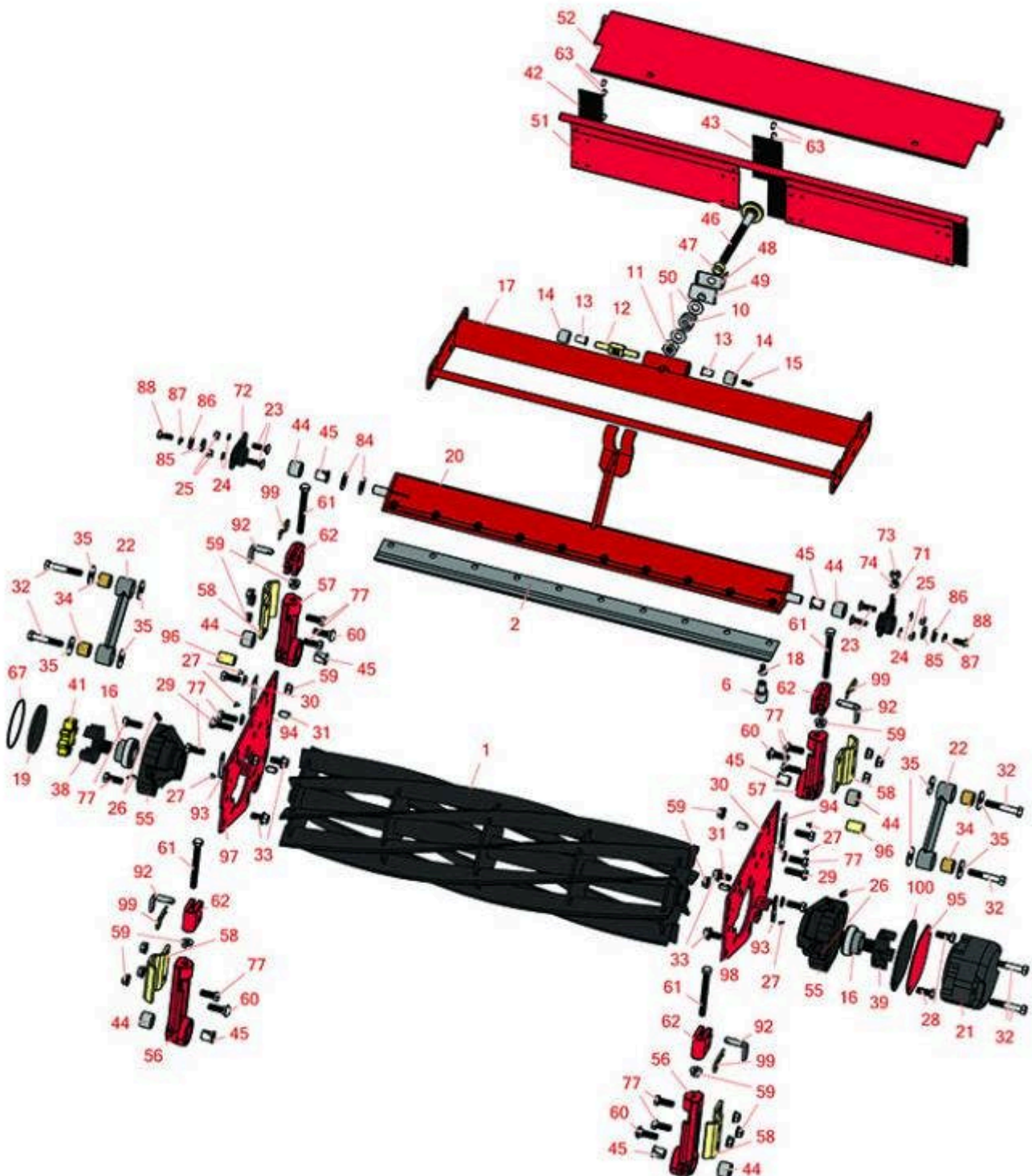




Replaces Toro Reelmaster 2600-D Parts

27in Cutting Unit - Models 03210 & 03211
Reel & Bedknife



All original equipment manufacturers names and part numbers are used for identification purposes only, and we are in no way implying that our products are original equipment parts. Prices subject to change without notice.



Replaces Toro Reelmaster 2600-D Parts

27in Cutting Unit - Models 03210 & 03211

Reel & Bedknife



Item No	R&R Part No.	OEM Part No.	Description	Qty Req	Price Each	Order Quantity
R&R Reels, Lifetime Guaranteed						
1	R94-3631	93-8839, 94-3631, 99-3468, 99-3482	Reel - 5 Blade Fits 27x7	1	325.05	
R&R Bedknives, Lifetime Guaranteed						
2	R62-5180	105-6785, 61-0800, 62-5180	Bedknife - Lowcut - 27 in Unit	1	50.35	
2	R104-1380	104-1380	Bedknife - Highcut - 27 in Unit	1	52.50	
2	R94-5079	104-1381, 94-4974, 94-5079	Bedknife - Lowcut - 32 in Unit	1	48.20	
R&R Razor Tool Steel Bedknives, Lifetime Guaranteed						
2	R112-8910	112-8910	Bedknife - Razor Tool Steel - 27 High Cut	1	108.50	
2	R112-8956	112-8956	Bedknife - Razor Tool Steel - 32 x 3/8 Fairway	1	121.55	
Service Tools						
6	R51-0880	51-0880	Bedknife Screw Driver Tool	1	35.65	
Other Parts Available						
10	R57-5270	57-5270	Spring - Adjusting Handle	1	6.80	
11	R3296-62	3296-62	Locknut - 1/2-20 LH Jam	1	1.25	
12	R57-5260	107-7409, 57-5260	Pivot - 1/2-20 - Bed Bar	1	15.75	
13	R52-2890	52-2890	Bushing - Flanged	2	0.77	
14	R62-5510	52-2870, 62-5510	Bushing	2	4.35	
15	R302-18	302-18	Zerk - Grease Press Style	1	0.47	

All original equipment manufacturers names and part numbers are used for identification purposes only, and we are in no way implying that our products are original equipment parts. Prices subject to change without notice.



Replaces Toro Reelmaster 2600-D Parts

27in Cutting Unit - Models 03210 & 03211

Reel & Bedknife



Item No	R&R Part No.	OEM Part No.	Description	Qty Req	Price Each	Order Quantity
16	R100-4926	100-4926	Bearing - Reel Self Aligning	2	21.60	
17	R95-8753-01	95-8753, 95-8753-01	Reel Frame - 27 in	1	244.15	
18	R150476	3-3816, 3-6462, 52-4910, 57-4910	Screw - Bedknife 5/16-18 x 5/8	10	0.29	
19	R94-2703	94-2703	Plug - Plastic Spindle Housing	1	2.05	
20	R95-8739	95-8739, 95-8739-01	Bed Bar - Fits 27 Units	1	208.95	
21	R105-0171-03	105-0171-03	Weight-End	1	71.90	
22	R16-9759	16-9759	Link Assy	4	44.50	
23	R3230-2	01-173-0508, 25-25-AGD, 3230-16, 3230-2, 513624, 513633, 513635, 900038P	Bolt - Carriage	4	1.05	
24	R3256-74	3256-74	Washer - Flat	4	0.65	
25	R3296-29	1-804256, 3290-357, 3296-29, 915662P	Locknut - 5/16-18 ESNA	4	2.95	

All original equipment manufacturers names and part numbers are used for identification purposes only, and we are in no way implying that our products are original equipment parts. Prices subject to change without notice.



Replaces Toro Reelmaster 2600-D Parts

27in Cutting Unit - Models 03210 & 03211

Reel & Bedknife



Item No	R&R Part No.	OEM Part No.	Description	Qty Req	Price Each	Order Quantity
26	R302-5	21-6010, 302-11, 302-37, 302-47, 302-5, 302-57, 302-58, 302-6, 31-0300, 32-9660, 60-0800, 62-3880, 92-4181	Fitting - Grease	4	0.27	
27	R3290-55	3290-50, 3290-55	Rivet - 5/32 x 3/8 Pop Rivet	6	0.35	
28	R323-2	01-178-0604, 323-2	Bolt - Hex HD 3/8-16 x 1	2	0.44	
29	R400264	01-150-0180, 01-178-0610, 20-48-AD, 20-48-AGD, 32-9160, 3224-3, 323-29, 323-7, 400264, 908035P	Bolt - Hex HD 3/8-16 x 1-1/4	2	0.40	
30	R3254-6	01-166-0010, 01-166-0280, 01-166-0610, 3253-5, 3254-18, 3254-6, 3290-223, 48-9370	Washer - Lock 3/8	2	0.08	
31	R32121-36	32121-36	Pin-Spring	4	2.55	

All original equipment manufacturers names and part numbers are used for identification purposes only, and we are in no way implying that our products are original equipment parts. Prices subject to change without notice.



Replaces Toro Reelmaster 2600-D Parts

27in Cutting Unit - Models 03210 & 03211

Reel & Bedknife



Item No	R&R Part No.	OEM Part No.	Description	Qty Req	Price Each	Order Quantity
32	R323-11	01-150-1440, 01-178-0618, 20-52-AD, 3224-7, 323-11	Bolt - 3/8-16 x 2 1/4 GR5	2	0.84	
33	R110-1718	110-1718	Screw-HHF	4	1.10	
34	R94-8945	94-8945	Bushing - Bronze - Link Bar	4	2.55	
35	R93-8806	93-8806	Washer-Hardened	8	1.45	
38	R93-8825	93-8825	Coupling - RH Reel	1	60.95	
39	R93-8826	93-8826	Coupling - LH Reel	1	60.95	
41	R93-8827	93-8827	Spider - Reel Coupling	1	20.80	
42	R61-3280	61-3280	Cover - Rubber Side	2	3.40	
43	R61-3290	61-3290	Cover - Rubber Center	2	6.75	
44	R56-9510	56-9510	Bushing - Rubber For Bed Bar / RI	6	5.45	
45	R56-9520	56-9520	Bushing - Nyliner	6	1.55	
46	R95-8877	106-7536, 93-2957, 95-2762, 95-8877	Handle - Bed Bar Adjustment	1	48.95	
47	R93-2959	93-2959	Spacer - Bed Bar Assy	1	2.50	
48	R95-8752	93-9767, 95-8752	Arm - Spring	1	8.15	
49	R93-2892	93-2892	Pivot - Plastic - Bed Bar	1	2.85	
50	R29-8910-01	29-8910	Washer - Flat 1/2	2	0.36	
51	R93-8849	61-1130, 93-8817, 93-8849	Shield - Rear Grass Fits 27 in Units	1	59.25	

All original equipment manufacturers names and part numbers are used for identification purposes only, and we are in no way implying that our products are original equipment parts. Prices subject to change without notice.



Replaces Toro Reelmaster 2600-D Parts

27in Cutting Unit - Models 03210 & 03211

Reel & Bedknife



Item No	R&R Part No.	OEM Part No.	Description	Qty Req	Price Each	Order Quantity
52	R94-3621	94-3621	Shield - Top Incl. Safety Decal 27 in	1	51.30	
55	R99-3404	93-6930, 99-3404	Housing-Bearing	2	54.70	
56	R14-4479	14-4479	Bracket - Assy - Rear Roller	2	36.20	
57	R14-4489	14-4489	Bracket - Assy - Front Roller	2	36.50	
58	R61-0910	61-0910	Bracket	4	6.20	
59	R3296-39	32127-25, 32128-36, 3290-357, 3296-17, 3296-22, 3296-39, 915663P, 99-7443	Locknut - 3/8-16 Nylon	16	1.40	
60	R3231-25	01-173-0610, 30-9970, 3231-25, 3231-3, 900064P	Bolt - Carriage 3/8-16 x 1-1/4	2	0.66	
61	R61-0790	323-57, 61-0790	Bolt - Roller Adjustment	4	3.55	
62	R61-0420	61-0420, 61-0420-01	Support - HOC	4	17.40	
63	R3295-48	3295-48	Rivet - 3/16 x 3/8 Tub	12	0.35	
63	R700382	700382	Rivet - Guard	12	0.34	
67	R353-949	353-949, 60-3520	O-Ring	1	1.40	
71	R16-9769	16-9769	Housing - Bed Bar - Adj. Side	1	28.50	
72	R14-4459	14-4459	Housing - w/Bushing For Bed Bar	1	22.20	

All original equipment manufacturers names and part numbers are used for identification purposes only, and we are in no way implying that our products are original equipment parts. Prices subject to change without notice.



Replaces Toro Reelmaster 2600-D Parts

27in Cutting Unit - Models 03210 & 03211

Reel & Bedknife



Item No	R&R Part No.	OEM Part No.	Description	Qty Req	Price Each	Order Quantity
73	R444754	01-189-0518, 3296-4	Locknut - 5/16-24 Center	1	0.43	
74	R3219-2	01-188-0524, 22-12-BJKD, 3219-2, 915720	Nut - 5/16-24 Zinc	1	0.37	
77	R323-6	01-150-0010, 01-178-0608, 20-47-AD, 20-47-AGD, 3224-2, 323-6, 49-3510, 908034P, 908332	Bolt - Hex HD 3/8-16 x 1 GR5 YZ	8	0.59	
84	R61-1950	61-1950	Washer - Nylon - Bed Bar	1	0.64	
85	R62-7120	62-7120	Washer	1	0.80	
86	R3256-56	3256-56, 60-4750	Washer	1	0.39	
87	R3253-4	01-166-0110, 01-166-0510, 23-10-GD, 24-7170, 30-8520, 3253-4, 42-9850, 48-9350, 48-9360, 48-9570, 68-9420, 99-7577	Washer - Lock 5/16 Zinc	1	0.14	
88	R322-3	01-150-1420, 01-178-0506, 20-24-AD, 20-24-AGD, 322-3, 48-9270, 513339, 908017P	Bolt - Hex HD 5/16-18 x 3/4	1	0.62	

All original equipment manufacturers names and part numbers are used for identification purposes only, and we are in no way implying that our products are original equipment parts. Prices subject to change without notice.



Replaces Toro Reelmaster 2600-D Parts

27in Cutting Unit - Models 03210 & 03211

Reel & Bedknife



Item No	R&R Part No.	OEM Part No.	Description	Qty Req	Price Each	Order Quantity
92	R71-3690	61-0630, 71-3690	Spade - Bent	4	9.50	
93	R61-3790	61-3790	Plate-HOC, Front	2	3.85	
94	R61-3800	61-3800	Plate - HOC Rear	2	6.45	
95	R93-6960	93-6960	Cover - Bearing Holder	1	15.85	
96	R93-6981	93-6981	Spacer	8	4.60	
97	R94-3695-01	94-3695, 94-3695-01	Plate - Side Reel RH	1	38.85	
98	R94-3697-01	94-3697, 94-3697-01	Plate - Side Reel LH	1	38.90	
99	R3290-467	3290-467	Pin-Hair	4	0.41	
100	R94-5979	94-5979	Gasket	1	6.45	

All original equipment manufacturers names and part numbers are used for identification purposes only, and we are in no way implying that our products are original equipment parts. Prices subject to change without notice.