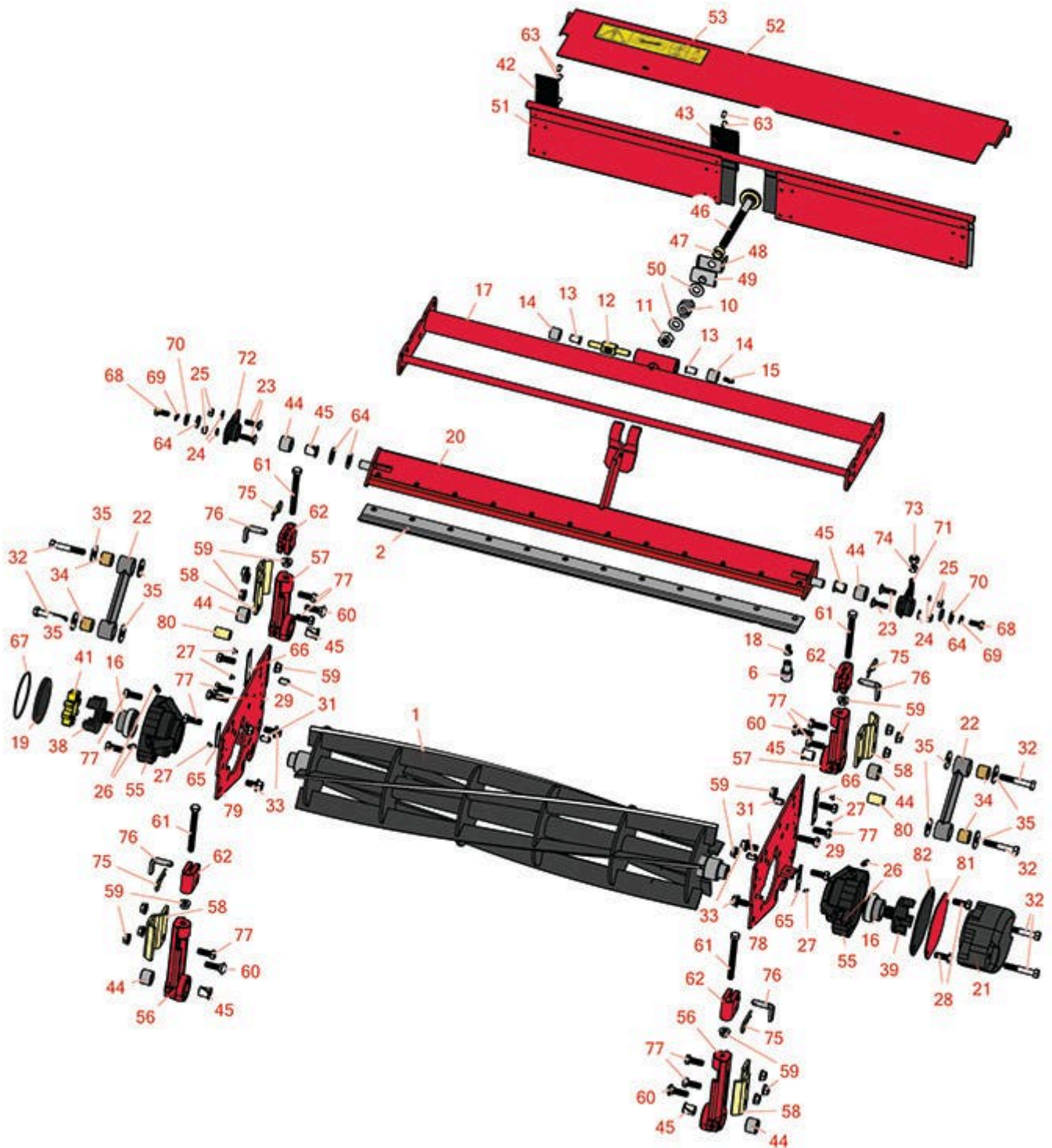




# Replaces Toro Reelmaster 2600-D Parts

32in Cutting Unit - Models 03212 & 03213  
Reel & Bedknife



All original equipment manufacturers names and part numbers are used for identification purposes only, and we are in no way implying that our products are original equipment parts. Prices subject to change without notice.



# Replaces Toro Reelmaster 2600-D Parts

32in Cutting Unit - Models 03212 & 03213

Reel & Bedknife



Item No	R&R Part No.	OEM Part No.	Description	Qty Req	Price Each	Order Quantity
<b>R&amp;R Reels, Lifetime Guaranteed</b>						
1	<b>R94-5055</b>	94-4987, 99-3470, 99-3484	Reel - 5 Blade 32x7	1	<b>337.65</b>	
<b>R&amp;R Bedknives, Lifetime Guaranteed</b>						
2	<b>R94-5079</b>	104-1381, 94-4974, 94-5079	Bedknife - Lowcut - 32 in Unit	1	<b>48.20</b>	
<b>R&amp;R Razor Tool Steel Bedknives, Lifetime Guaranteed</b>						
2	<b>R112-8956</b>	112-8956	Bedknife - Razor Tool Steel - 32 x 3/8 Fairway	1	<b>121.55</b>	
<b>Service Tools</b>						
6	<b>R51-0880</b>	51-0880	Bedknife Screw Driver Tool	0	<b>35.65</b>	
<b>Other Parts Available</b>						
10	<b>R57-5270</b>	57-5270	Spring - Adjusting Handle	1	<b>6.80</b>	
11	<b>R3296-62</b>	3296-62	Locknut - 1/2-20 LH Jam	1	<b>1.25</b>	
12	<b>R57-5260</b>	107-7409, 57-5260	Pivot - 1/2-20 - Bed Bar	1	<b>15.75</b>	
13	<b>R52-2890</b>	52-2890	Bushing - Flanged	2	<b>0.77</b>	
14	<b>R62-5510</b>	52-2870, 62-5510	Bushing	2	<b>4.35</b>	
15	<b>R302-18</b>	302-18	Zerk - Grease Press Style	1	<b>0.47</b>	
16	<b>R100-4926</b>	100-4926	Bearing - Reel Self Aligning	2	<b>21.60</b>	
17	<b>R95-8755-01</b>	95-8755, 95-8755-01	Reel Frame - 32 in	1	<b>215.30</b>	

All original equipment manufacturers names and part numbers are used for identification purposes only, and we are in no way implying that our products are original equipment parts. Prices subject to change without notice.



# Replaces Toro Reelmaster 2600-D Parts

32in Cutting Unit - Models 03212 & 03213  
Reel & Bedknife



Item No	R&R Part No.	OEM Part No.	Description	Qty Req	Price Each	Order Quantity
18	<b>R150476</b>	3-3816, 3-6462, 52-4910, 57-4910	Screw - Bedknife 5/16-18 x 5/8	10	<b>0.29</b>	
19	<b>R94-2703</b>	94-2703	Plug - Plastic Spindle Housing	1	<b>2.05</b>	
20	<b>R95-8748</b>	95-8748-01	Bed Bar - Fits 32 Units	1	<b>229.70</b>	
21	<b>R105-0171-03</b>	105-0171-03	Weight-End	1	<b>71.90</b>	
22	<b>R16-9759</b>	16-9759	Link Assy	4	<b>44.50</b>	
23	<b>R3230-2</b>	01-173-0508, 25-25-AGD, 3230-16, 3230-2, 513624, 513633, 513635, 900038P	Bolt - Carriage	2	<b>1.05</b>	
24	<b>R3256-74</b>	3256-74	Washer - Flat	4	<b>0.65</b>	
25	<b>R3296-29</b>	1-804256, 3290-357, 3296-29, 915662P	Locknut - 5/16-18 ESNA	4	<b>2.95</b>	
26	<b>R302-5</b>	21-6010, 302-11, 302-37, 302-47, 302-5, 302-57, 302-58, 302-6, 31-0300, 32-9660, 60-0800, 62-3880, 92-4181	Fitting - Grease	4	<b>0.27</b>	
27	<b>R3290-55</b>	3290-50, 3290-55	Rivet - 5/32 x 3/8 Pop Rivet	6	<b>0.35</b>	

All original equipment manufacturers names and part numbers are used for identification purposes only, and we are in no way implying that our products are original equipment parts. Prices subject to change without notice.



# Replaces Toro Reelmaster 2600-D Parts

32in Cutting Unit - Models 03212 & 03213  
Reel & Bedknife



Item No	R&R Part No.	OEM Part No.	Description	Qty Req	Price Each	Order Quantity
28	<b>R323-2</b>	01-178-0604, 323-2	Bolt - Hex HD 3/8-16 x 1	2	<b>0.44</b>	
29	<b>R400264</b>	01-150-0180, 01-178-0610, 20-48-AD, 20-48-AGD, 32-9160, 3224-3, 323-29, 323-7, 400264, 908035P	Bolt - Hex HD 3/8-16 x 1-1/4	2	<b>0.40</b>	
31	<b>R32121-36</b>	32121-36	Pin-Spring	4	<b>2.55</b>	
32	<b>R323-11</b>	01-150-1440, 01-178-0618, 20-52-AD, 3224-7, 323-11	Bolt - 3/8-16 x 2 1/4 GR5	2	<b>0.84</b>	
33	<b>R110-1718</b>	110-1718	Screw-HHF	4	<b>1.10</b>	
34	<b>R94-8945</b>	94-8945	Bushing - Bronze - Link Bar	4	<b>2.55</b>	
35	<b>R93-8806</b>	93-8806	Washer-Hardened	8	<b>1.45</b>	
38	<b>R93-8825</b>	93-8825	Coupling - RH Reel	1	<b>60.95</b>	
39	<b>R93-8826</b>	93-8826	Coupling - LH Reel	1	<b>60.95</b>	
41	<b>R93-8827</b>	93-8827	Spider - Reel Coupling	1	<b>20.80</b>	
42	<b>R61-3280</b>	61-3280	Cover - Rubber Side	2	<b>3.40</b>	
43	<b>R61-3290</b>	61-3290	Cover - Rubber Center	2	<b>6.75</b>	
44	<b>R56-9510</b>	56-9510	Bushing - Rubber For Bed Bar / RI	6	<b>5.45</b>	
45	<b>R56-9520</b>	56-9520	Bushing - Nyliner	6	<b>1.55</b>	

All original equipment manufacturers names and part numbers are used for identification purposes only, and we are in no way implying that our products are original equipment parts. Prices subject to change without notice.



# Replaces Toro Reelmaster 2600-D Parts

32in Cutting Unit - Models 03212 & 03213  
Reel & Bedknife



Item No	R&R Part No.	OEM Part No.	Description	Qty Req	Price Each	Order Quantity
46	<b>R95-8877</b>	106-7536, 93-2957, 95-2762, 95-8877	Handle - Bed Bar Adjustment	1	<b>48.95</b>	
47	<b>R93-2959</b>	93-2959	Spacer - Bed Bar Assy	1	<b>2.50</b>	
48	<b>R95-8752</b>	93-9767, 95-8752	Arm - Spring	1	<b>8.15</b>	
49	<b>R93-2892</b>	93-2892	Pivot - Plastic - Bed Bar	1	<b>2.85</b>	
50	<b>R29-8910-01</b>	29-8910	Washer - Flat 1/2	2	<b>0.36</b>	
51	<b>R94-4969</b>	94-4969	Shield - Rear Grass 32 in Units	1	<b>68.95</b>	
52	<b>R94-5053</b>	94-5053	Shield - Top - Fits 32 in Units	1	<b>57.95</b>	
53	<b>R93-8064</b>	93-8064	Decal - Warning	1	<b>2.50</b>	
55	<b>R99-3404</b>	93-6930, 99-3404	Housing-Bearing	2	<b>54.70</b>	
56	<b>R14-4479</b>	14-4479	Bracket - Assy - Rear Roller	2	<b>36.20</b>	
57	<b>R14-4489</b>	14-4489	Bracket - Assy - Front Roller	2	<b>36.50</b>	
58	<b>R61-0910</b>	61-0910	Bracket	4	<b>6.20</b>	
59	<b>R3296-39</b>	32127-25, 32128-36, 3290-357, 3296-17, 3296-22, 3296-39, 915663P, 99-7443	Locknut - 3/8-16 Nylon	16	<b>1.40</b>	
60	<b>R3231-25</b>	01-173-0610, 30-9970, 3231-25, 3231-3, 900064P	Bolt - Carriage 3/8-16 x 1-1/4	2	<b>0.66</b>	

All original equipment manufacturers names and part numbers are used for identification purposes only, and we are in no way implying that our products are original equipment parts. Prices subject to change without notice.



# Replaces Toro Reelmaster 2600-D Parts

32in Cutting Unit - Models 03212 & 03213

Reel & Bedknife



Item No	R&R Part No.	OEM Part No.	Description	Qty Req	Price Each	Order Quantity
61	<b>R61-0790</b>	323-57, 61-0790	Bolt - Roller Adjustment	4	<b>3.55</b>	
62	<b>R61-0420</b>	61-0420, 61-0420-01	Support - HOC	4	<b>17.40</b>	
63	<b>R3295-48</b>	3295-48	Rivet - 3/16 x 3/8 Tub	12	<b>0.35</b>	
63	<b>R700382</b>	700382	Rivet - Guard	12	<b>0.34</b>	
64	<b>R61-1950</b>	61-1950	Washer - Nylon - Bed Bar	1	<b>0.64</b>	
64	<b>R62-7120</b>	62-7120	Washer	1	<b>0.80</b>	
65	<b>R61-3790</b>	61-3790	Plate-HOC, Front	2	<b>3.85</b>	
66	<b>R61-3800</b>	61-3800	Plate - HOC Rear	2	<b>6.45</b>	
67	<b>R353-949</b>	353-949, 60-3520	O-Ring	1	<b>1.40</b>	
68	<b>R322-3</b>	01-150-1420, 01-178-0506, 20-24-AD, 20-24-AGD, 322-3, 48-9270, 513339, 908017P	Bolt - Hex HD 5/16-18 x 3/4	1	<b>0.62</b>	
69	<b>R3253-4</b>	01-166-0110, 01-166-0510, 23-10-GD, 24-7170, 30-8520, 3253-4, 42-9850, 48-9350, 48-9360, 48-9570, 68-9420, 99-7577	Washer - Lock 5/16 Zinc	1	<b>0.14</b>	
70	<b>R3256-56</b>	3256-56, 60-4750	Washer	1	<b>0.39</b>	

All original equipment manufacturers names and part numbers are used for identification purposes only, and we are in no way implying that our products are original equipment parts. Prices subject to change without notice.



## Replaces Toro Reelmaster 2600-D Parts

32in Cutting Unit - Models 03212 & 03213

Reel & Bedknife



Item No	R&R Part No.	OEM Part No.	Description	Qty Req	Price Each	Order Quantity
71	<b>R16-9769</b>	16-9769	Housing - Bed Bar - Adj. Side	1	<b>28.50</b>	
72	<b>R14-4459</b>	14-4459	Housing - w/Bushing For Bed Bar	1	<b>22.20</b>	
73	<b>R444754</b>	01-189-0518, 3296-4	Locknut - 5/16-24 Center	1	<b>0.43</b>	
74	<b>R3219-2</b>	01-188-0524, 22-12-BJKD, 3219-2, 915720	Nut - 5/16-24 Zinc	1	<b>0.37</b>	
75	<b>R3290-467</b>	3290-467	Pin-Hair	4	<b>0.41</b>	
76	<b>R71-3690</b>	61-0630, 71-3690	Spade - Bent	4	<b>9.50</b>	
77	<b>R323-6</b>	01-150-0010, 01-178-0608, 20-47-AD, 20-47-AGD, 3224-2, 323-6, 49-3510, 908034P, 908332	Bolt - Hex HD 3/8-16 x 1 GR5 YZ	8	<b>0.59</b>	
78	<b>R94-3697-01</b>	94-3697, 94-3697-01	Plate - Side Reel LH	1	<b>38.90</b>	
79	<b>R94-3695-01</b>	94-3695, 94-3695-01	Plate - Side Reel RH	1	<b>38.85</b>	
80	<b>R93-6981</b>	93-6981	Spacer	8	<b>4.60</b>	
81	<b>R93-6960</b>	93-6960	Cover - Bearing Holder	1	<b>15.85</b>	
82	<b>R94-5979</b>	94-5979	Gasket	1	<b>6.45</b>	

All original equipment manufacturers names and part numbers are used for identification purposes only, and we are in no way implying that our products are original equipment parts. Prices subject to change without notice.