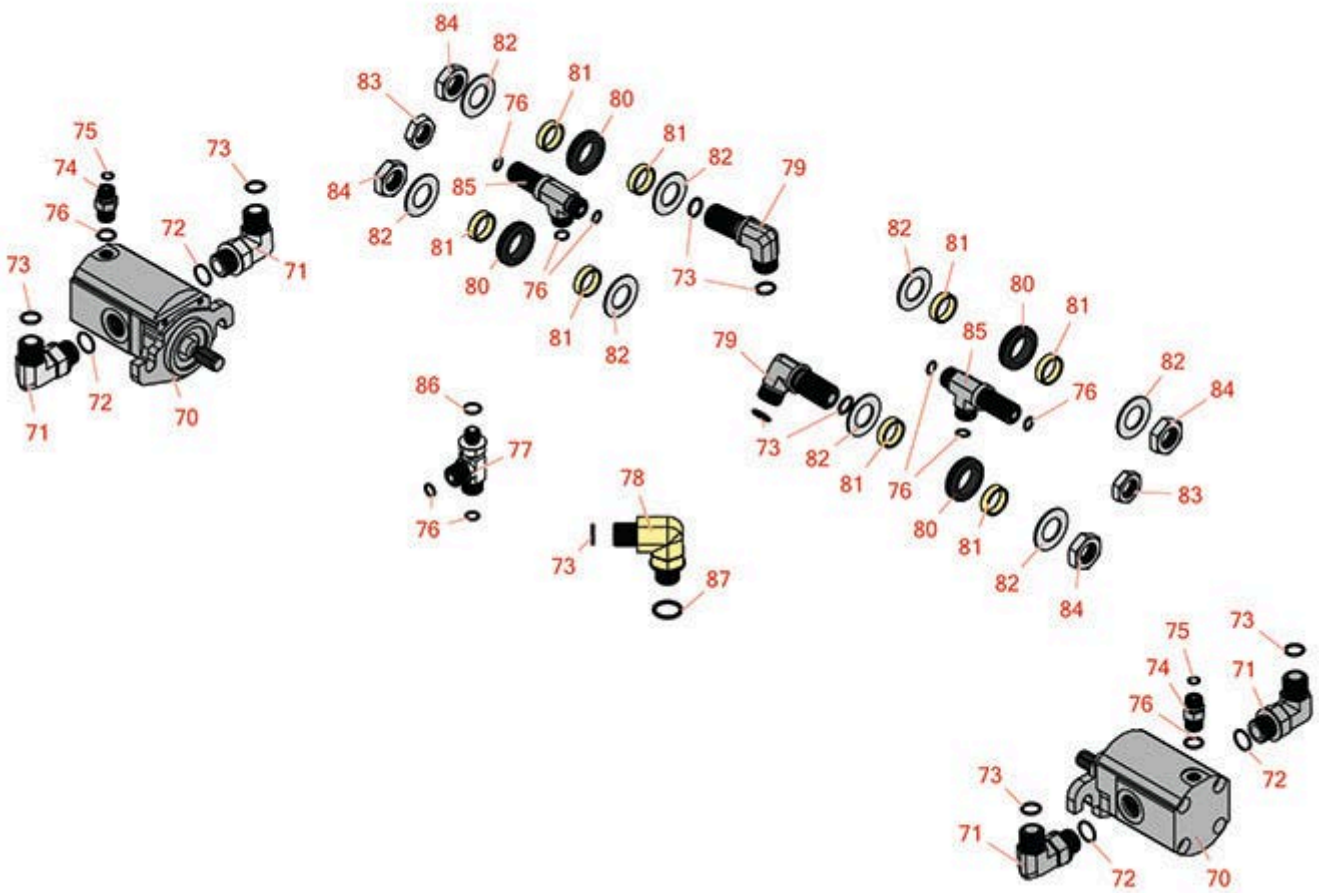




# Replaces Toro Reelmaster 3555-D Parts

*Traction Unit*

*2 & 3 Reel Motors & Hydraulics*



All original equipment manufacturers names and part numbers are used for identification purposes only, and we are in no way implying that our products are original equipment parts. Prices subject to change without notice.



# Replaces Toro Reelmaster 3555-D Parts

*Traction Unit*

*2 & 3 Reel Motors & Hydraulics*



Item No	R&R Part No.	OEM Part No.	Description	Qty Req	Price Each	Order Quantity
70	<b>R120-2072</b>	100-6426, 108-6487, 112-9200, 120-2072, 93-1375	Hydraulic Gear Motor	2	<b>360.90</b>	
71	<b>R340-98</b>	340-98	Hydraulic Fitting	4	<b>15.60</b>	
72	<b>R237-79</b>	237-79	O-Ring	12	<b>1.50</b>	
73	<b>R237-30</b>	23-6320, 237-30	O-Ring - Seal	9	<b>0.78</b>	
74	<b>R340-92</b>	340-92	Hydraulic Fitting - Striaight	2	<b>6.95</b>	
75	<b>R237-21</b>	237-21, 327-21	O-Ring	2	<b>0.47</b>	
76	<b>R237-22</b>	107-8844, 237-22, 237-78	O-Ring	2	<b>0.62</b>	
77	<b>R340-86</b>	340-86	Fitting-Tee	1	<b>21.75</b>	
78	<b>R340-105</b>	340-105	Hydraulic Fitting	1	<b>20.55</b>	
79	<b>R93-9151</b>	93-9151	Hydraulic Fitting	2	<b>25.40</b>	
80	<b>R240-5</b>	240-5	Grommet - Rubber	4	<b>7.90</b>	
81	<b>R69-8960</b>	69-8960	Spacer	8	<b>5.65</b>	
82	<b>R69-8930</b>	69-8930	Washer	8	<b>1.75</b>	
83	<b>R340-70</b>	340-70	Nut - Lock	2	<b>2.30</b>	
84	<b>R340-127</b>	340-127	Nut - Bulkhead	4	<b>5.95</b>	
85	<b>R340-68</b>	340-120, 340-68	Fitting - Tee - Bulkhead	2	<b>19.20</b>	
86	<b>R237-42</b>	237-42, 31-4160	O-Ring	1	<b>0.80</b>	

All original equipment manufacturers names and part numbers are used for identification purposes only, and we are in no way implying that our products are original equipment parts. Prices subject to change without notice.



# Replaces Toro Reelmaster 3555-D Parts

*Traction Unit*

*2 & 3 Reel Motors & Hydraulics*



Item No	R&R Part No.	OEM Part No.	Description	Qty Req	Price Each	Order Quantity
87	<b>R237-80</b>	237-80, 327-80	O-Ring	1	<b>1.85</b>	

All original equipment manufacturers names and part numbers are used for identification purposes only, and we are in no way implying that our products are original equipment parts. Prices subject to change without notice.