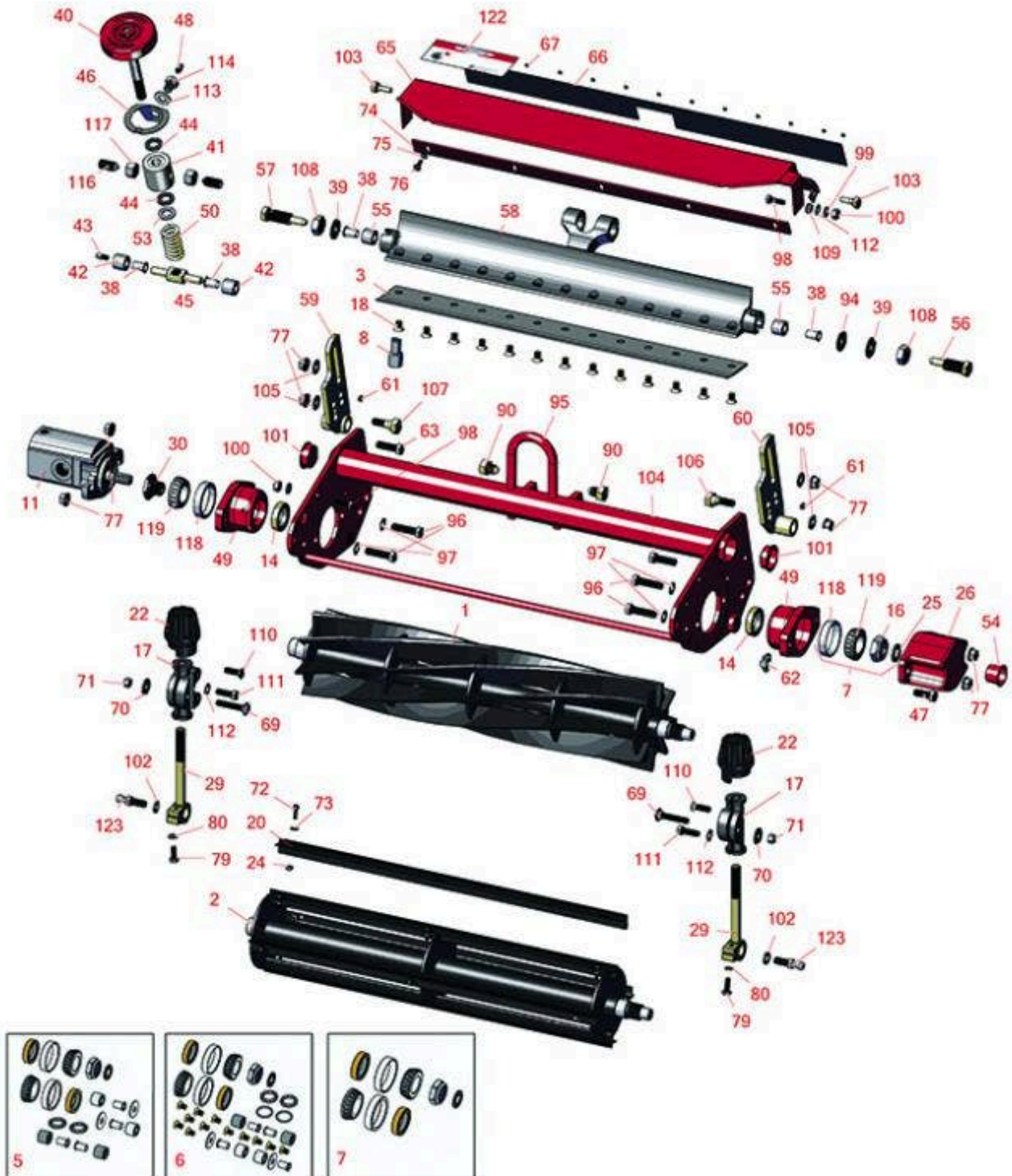




Replaces Toro Greensmaster 3000 Parts

SPA Cutting Unit - Models 04450 & 04468
Reel & Bedknife



All original equipment manufacturers names and part numbers are used for identification purposes only, and we are in no way implying that our products are original equipment parts. Prices subject to change without notice.



Replaces Toro Greensmaster 3000 Parts

SPA Cutting Unit - Models 04450 & 04468

Reel & Bedknife



Item No	R&R Part No.	OEM Part No.	Description	Qty Req	Price Each	Order Quantity
R&R Reels, Lifetime Guaranteed						
1	R150760		Reel - 14 Blade	1	433.55	
1	R12-2789	12-2789, 130-6470	Reel - 11 Blade	1	284.55	
1	R5-3195	5-3195	Reel - 9 Blade	1	262.20	
1	R5-3189	12-3599, 130-6469, 5-3189	Reel - 8 Blade	1	264.70	
1	R5-3189H		Reel - 8 Blade Heavy Duty	1	253.70	
1	R5-3206	5-3206	Reel - 6 Blade	1	241.95	
1	R5-3205	12-0729, 12-8779, 5-3205	Reel - 5 Blade	1	236.65	
1	R5-3215	5-3215	Reel - 5 Blade Heavy Duty	1	241.70	
1	R5-3200	5-3200	Reel - 4 Blade	1	230.95	
2	R150480		Brush Reel	1	203.80	
R&R Bedknives, Lifetime Guaranteed						
3	R150466	63-8600, 64-6393, 94-6393	Bedknife - Super Thick .312 - 1.00 HOC	1	39.70	
3	R94-6392	62-2500, 94-6392	Bedknife - High Cut .312 - 1.00 HOC	1	39.25	
3	R93-4264	57-4960, 63-8470, 93-4264	Bedknife - Low Cut .187 - 1.00 HOC	1	38.10	
3	R93-4263	63-8560, 66-9320, 93-4263, 93-6039	Bedknife - Tournament Cut .125 - .500 HOC	1	39.75	

All original equipment manufacturers names and part numbers are used for identification purposes only, and we are in no way implying that our products are original equipment parts. Prices subject to change without notice.



Replaces Toro Greensmaster 3000 Parts

SPA Cutting Unit - Models 04450 & 04468

Reel & Bedknife



Item No	R&R Part No.	OEM Part No.	Description	Qty Req	Price Each	Order Quantity
3	R93-4262	65-8250, 93-4262, 93-4263	Bedknife - Micro Cut .062 - .187 HOC	1	36.50	
3	R94-6396	10-4900, 54-9150, 94-6396, Oct-00	Bedknife - High Cut 5/16"-1" HOC	1	40.80	

R&R Razor Tool Steel Bedknives

3	R115-1881	115-1881	Bedknife - Razor Tool Steel - 21 Tournament Cut .125 - .500 HOC	1	79.15	
---	------------------	----------	---	---	--------------	--

Tech Note: Razor Tool Steel Bedknives are constructed from high grade tool steel for extended life and optimum cut.:

3	R115-1880	115-1880	Bedknife - Razor Tool Steel - 21 Micro Cut .062 - .187 HOC	1	79.90	
---	------------------	----------	---	---	--------------	--

Tech Note: Razor Tool Steel Bedknives are constructed from high grade tool steel for extended life and optimum cut.:

Overhaul Kits & Service Tools

5	R255-310	255-310	Overhaul Kit - Cutting Unit	0	69.20	
---	-----------------	---------	-----------------------------	---	--------------	--

Tech Note: Includes 4 ea: R52-2890 Bushings; 2 ea: R237-77 O-Rings, R253-96 Seals, R254-72 Cups, R254-94 Bearings, R52-2900 Washers, R57-5280 Bearings, R62-5510 Bushings, R63-9510 Bushings; 1 ea: R253-61 Seal & R32127-46 Locknut:

6	R13-3659	13-3659	Overhaul Kit - Cutting Unit	1	61.85	
---	-----------------	---------	-----------------------------	---	--------------	--

Tech Note: Includes 13 ea.:R150477 Screws; 4 ea.: R52-2890 Bushings; 2 ea.: R237-77 O-rings, R253-96 Seals, R254-72 Bearing Cups, R254-94 Bearings, R52-2900 Washers, R57-5280 Bearings, R62-5510 Bushings, R63-9510 Bushings; 1 ea.: R253-61 Seal & R32127-46 Locknut:

7	R107-1590	107-1590	Overhaul Kit - Cutting Unit	1	36.10	
---	------------------	----------	-----------------------------	---	--------------	--

Tech Note: Includes 2 ea.: R253-96 Seals, R254-72 Bearing Cups, R254-94 Bearings; 1 ea.: R253-61 Seal & R32127-46 Locknut:

8	R51-0880	51-0880	Bedknife Screw Driver Tool	1	35.65	
---	-----------------	---------	----------------------------	---	--------------	--

All original equipment manufacturers names and part numbers are used for identification purposes only, and we are in no way implying that our products are original equipment parts. Prices subject to change without notice.



Replaces Toro Greensmaster 3000 Parts

SPA Cutting Unit - Models 04450 & 04468

Reel & Bedknife



Item No	R&R Part No.	OEM Part No.	Description	Qty Req	Price Each	Order Quantity
---------	--------------	--------------	-------------	---------	------------	----------------

Other Parts Available

11	R120-2072	100-6426, 108-6487, 112-9200, 120-2072, 93-1375	Hydraulic Gear Motor	1	360.90	
11	R105-9770	10-5090, 105-9770, 26-5690, 70-9800, 94-3506, 94-3507	Hydraulic Motor - Reel Quick Release	1	383.95	
14	R253-96	253-96	Seal - Oil Single Lip Reel	2	5.15	
16	R32127-46	32127-46, 3296-60	Locknut	1	2.85	
17	R10-5060	10-5060	Bracket - Roller Adj	2	22.25	
18	R150477	57-4910	Screw - Bedknife 5/16-18 x 1/2	13	0.34	
18	R119-4151	119-4151	Screw - Bedknife 5/16-18 x 17/32	13	0.29	
18	R150476	3-3816, 3-6462, 52-4910, 57-4910	Screw - Bedknife 5/16-18 x 5/8	13	0.29	
20	R150481		Brush Assy - Brush Reel	4	33.50	
22	R65-8600	10-5040, 65-8600	Knob - Height Adjusting	2	19.90	
24	R3296-9	32127-17, 3296-9	Locknut - Comb	12	0.34	
25	R253-61	253-61	Seal - Oil Reel	1	4.20	
26	R10-5080	10-5080, 10-5080-01	End - Cap Reel Brg Housing	1	47.10	

All original equipment manufacturers names and part numbers are used for identification purposes only, and we are in no way implying that our products are original equipment parts. Prices subject to change without notice.



Replaces Toro Greensmaster 3000 Parts

SPA Cutting Unit - Models 04450 & 04468

Reel & Bedknife



Item No	R&R Part No.	OEM Part No.	Description	Qty Req	Price Each	Order Quantity
29	R10-5010	10-5010	Screw - Roller Adjustment	2	24.65	
29	R65-9500	65-9500	Screw - Roller Adjusting - High Cut	2	21.45	
30	R93-1394	93-1394	Nut - Splined RH Thrd .812 Long	1	12.25	
38	R52-2890	52-2890	Bushing - Flanged	4	0.77	
39	R52-2900	52-2900	Washer - Nylon	2	0.57	
40	R77-0300	77-0300, 77-0300-01	Handle Assy	1	37.80	
41	R77-0330	77-0330	Housing - Pivot Spa	1	42.35	
42	R62-5510	52-2870, 62-5510	Bushing	4	4.35	
43	R302-18	302-18	Zerk - Grease Press Style	2	0.47	
44	R77-0350	77-0350	Retainer - Bearing	2	1.45	
45	R57-5260	107-7409, 57-5260	Pivot - 1/2-20 - Bed Bar	1	15.75	
46	R66-7220	66-7220	Arm - Spring Handle Assy	1	8.75	
47	R323-2	01-178-0604, 323-2	Bolt - Hex HD 3/8-16 x 1	1	0.44	
48	R302-5	21-6010, 302-11, 302-37, 302-47, 302-5, 302-57, 302-58, 302-6, 31-0300, 32-9660, 60-0800, 62-3880, 92-4181	Fitting - Grease	1	0.27	

All original equipment manufacturers names and part numbers are used for identification purposes only, and we are in no way implying that our products are original equipment parts. Prices subject to change without notice.



Replaces Toro Greensmaster 3000 Parts

SPA Cutting Unit - Models 04450 & 04468

Reel & Bedknife



Item No	R&R Part No.	OEM Part No.	Description	Qty Req	Price Each	Order Quantity
49	R104-3399	104-3399	Housing Assy - Bearing Reel	2	41.15	
50	R66-7230	66-7230	Spring - Compression	1	4.80	
53	R257-5	257-5	Washer - Thrust	2	1.85	
54	R12-0460	12-0460	Caplug - End Cap	1	0.98	
55	R63-9510	63-9480, 63-9510	Bushing - Rubber For Bed Bar	2	4.60	
56	R52-2910	52-2910	Bolt - Eccentric Bed Bar	1	10.70	
57	R52-2930	52-2930	Bolt - Bed Bar	1	8.95	
58	R57-4940	52-2780, 57-4940, 57-4940-01	Bed Bar - 13 Hole	1	164.70	
59	R52-3060	52-3060, 77-1060, 99-5653	Bracket - RH Rear Roller	1	26.05	
60	R52-3090	52-3090, 77-1080, 99-5654	Bracket - LH Rear Roller	1	26.05	
61	R415521	32-113-AHNC, 32137-1, 3246-2, 909862P	Screw - Set - 5/16-18 x 3/8	2	0.36	
62	R302-40	302-13, 302-40	Fitting - Grease	1	0.82	
63	R52-3110	52-3110	Bolt - Shoulder HOC RH	1	14.70	
65	R57-5200	57-5200	Shield - Grass	1	52.75	
66	R57-5210	57-5210	Deflector - Styrene	1	4.55	
67	R3295-46	3295-46	Tube - Rivet Smi Grass Shield	13	0.11	

All original equipment manufacturers names and part numbers are used for identification purposes only, and we are in no way implying that our products are original equipment parts. Prices subject to change without notice.



Replaces Toro Greensmaster 3000 Parts

SPA Cutting Unit - Models 04450 & 04468

Reel & Bedknife



Item No	R&R Part No.	OEM Part No.	Description	Qty Req	Price Each	Order Quantity
69	R441674	01-173-0514, 01-173-0516, 3-7253, 3230-5	Screw - 5/16-18 x 1-3/4 Carriage	2	0.70	
70	R310266	3256-23, 3256-3, 3556-3	Washer - Flat 5/16 USS	2	0.23	
70	R453009	01-166-0400, 24-10-BD, 24-9-AD, 32-9650, 3256-2, 3256-23, 3256-3, 3256-67, 3290-217, 3556-3, 4-2390, 7-0152	Washer - Flat 5/16 SAE	2	0.13	
71	R32153-3	119-4038, 22-12-AJFD, 32127-35, 32146-5, 32153-3, 3296-18, 3296-29, 3296-31, N/A	Locknut - 5/16-18 ESNA Zinc	2	0.62	
72	R150425		Bolt - Hex HD 8-32 x 5/8	12	0.23	
73	R150426	3256-21	Washer - 8 SAE	12	0.23	
74	R36-7260	36-7260	Bar - Cut Off Grass Shield	1	10.35	
75	R3256-14	24-7-BD, 32125-2, 3256-14, 3256-51, 51-2170	Washer - 10 Flat	5	0.34	
76	R32144-73	104-2065, 32144-73	Screw - Machine Hex Washer Head	5	0.39	

All original equipment manufacturers names and part numbers are used for identification purposes only, and we are in no way implying that our products are original equipment parts. Prices subject to change without notice.



Replaces Toro Greensmaster 3000 Parts

SPA Cutting Unit - Models 04450 & 04468

Reel & Bedknife



Item No	R&R Part No.	OEM Part No.	Description	Qty Req	Price Each	Order Quantity
77	R3296-39	32127-25, 32128-36, 3290-357, 3296-17, 3296-22, 3296-39, 915663P, 99-7443	Locknut - 3/8-16 Nylon	2	1.40	
79	R321-4	01-150-1030, 01-178-0406, 20-3-AGD, 321-4, 3222-1	Bolt - Hex HD 1/4-20 x 3/4	4	0.52	
80	R3253-3	01-166-0070, 01-166-0410, 23-9-GD, 24-7150, 3253-3, 3256-1, 352-167	Washer - Lock 1/4	4	0.11	
90	R66-7240	66-7240	Bolt - Single Point Adjust.	2	7.90	
94	R52-2860	119-4150, 52-2860	Washer - Bed Bar Pivot	1	0.67	
95	R70-1200	70-1200, 70-1200-01	Frame - Single Point Adj.	1	273.60	
96	R3290-316	3290-316, 57-3210	Bolt - Hex Tap 3/8-16 x 1-1/2	4	0.72	
97	R3255-9	3255-9	Washer - Lock 3/8 Ext. Star	4	0.19	
98	R321-5	321-31, 321-5	Bolt - Hex HD 1/4-20 x 7/8	2	0.29	
99	R3256-22	24-9-BD, 3-1032, 3256-1, 3256-22, 93-0954, 93-0989	Washer - Flat 1/4 Yellow	4	0.12	

All original equipment manufacturers names and part numbers are used for identification purposes only, and we are in no way implying that our products are original equipment parts. Prices subject to change without notice.



Replaces Toro Greensmaster 3000 Parts

SPA Cutting Unit - Models 04450 & 04468

Reel & Bedknife



Item No	R&R Part No.	OEM Part No.	Description	Qty Req	Price Each	Order Quantity
100	R301504	2296-42, 301504, 32127-24, 32128-33, 32146-17, 3296-16, 3296-42, 3296-42 , 915661P	Locknut - ESNA 1/4-20	2	0.18	
101	R285-14	285-14	Plug - Pipe Frame	2	2.35	
102	R3254-6	01-166-0010, 01-166-0280, 01-166-0610, 3253-5, 3254-18, 3254-6, 3290-223, 48-9370	Washer - Lock 3/8	2	0.08	
103	R57-9910	57-9910	Bolt - Pivot	2	2.95	
104	R400264	01-150-0180, 01-178-0610, 20-48-AD, 20-48-AGD, 32-9160, 3224-3, 323-29, 323-7, 400264, 908035P	Bolt - Hex HD 3/8-16 x 1-1/4	2	0.40	

All original equipment manufacturers names and part numbers are used for identification purposes only, and we are in no way implying that our products are original equipment parts. Prices subject to change without notice.



Replaces Toro Greensmaster 3000 Parts

SPA Cutting Unit - Models 04450 & 04468

Reel & Bedknife



Item No	R&R Part No.	OEM Part No.	Description	Qty Req	Price Each	Order Quantity
105	R453011	01-166-0100, 01-166-0120, 01-166-0270, 01-166-0500, 01-166-0600, 01-166-0620, 132-4593, 2356-3, 237-12, 24-10-AD, 24-11-AD, 24-11-BD, 24-12-AD, 24-12-BD, 30-9310, 32-8190, 3256-24, 3256-3, 3256-36, 3256-4, 453011, 47-9950, 48-9220, 513458, 7-0052	Washer - Flat 3/8 SAE Y/Zinc	4	0.11	
106	R52-3100	52-3100	Bolt - Eccentric Shoulder LH	1	15.30	
108	R443828	01-191-1018, 3214, 3220-6, 443828, 915089P	Nut - 5/8-18 Hex	2	0.62	
109	R237-84	237-84	Grommet - Rubber	2	0.83	
110	R32108-20	32108-20	Screw - Flat HD Cntrsunk	2	0.62	
111	R322-5	01-178-0508, 20-26-AD, 20-26-AGD, 30-9000, 322-5, 513341, 519755, 908019P, N/A	Bolt - Hex HD 5/16-18 x 1	2	0.40	

All original equipment manufacturers names and part numbers are used for identification purposes only, and we are in no way implying that our products are original equipment parts. Prices subject to change without notice.



Replaces Toro Greensmaster 3000 Parts

SPA Cutting Unit - Models 04450 & 04468

Reel & Bedknife



Item No	R&R Part No.	OEM Part No.	Description	Qty Req	Price Each	Order Quantity
112	R3255-8	3255-8	Washer - Lock 5/16 Ext	2	0.08	
113	R187-0	3256-25, 7-0032	Washer - Flat 7/16 SAE	1	0.22	
114	R52-2990	324-25, 52-2990	Bolt - Spring Retainer	1	4.65	
116	R57-5190	32110-19, 57-5190	Screw - Adjusting	2	1.95	
117	R443818	01-191-0813, 3218-18, 3218-5, 3248-18	Nut - 1/2-13 Hex Jam Zinc	2	0.35	
118	R254-72	01-103-0050, 01-103-0120, 01-103-0140, 1-543508, 254-71, 254-72, 40439, 62-3340, 99-4511	Cup - Bearing	2	3.85	
119	R254-94	1-543509, 254-94, 32-8090, 32-8240, 32-9640, 40440, 62-3330	Tapered Bearing Cone	2	7.15	
122	R354083	104-7729, 354083	Decal - Danger	1	1.25	
123	R94-2958	94-2958	Stud - Alloy Ball Joint	2	3.40	

All original equipment manufacturers names and part numbers are used for identification purposes only, and we are in no way implying that our products are original equipment parts. Prices subject to change without notice.