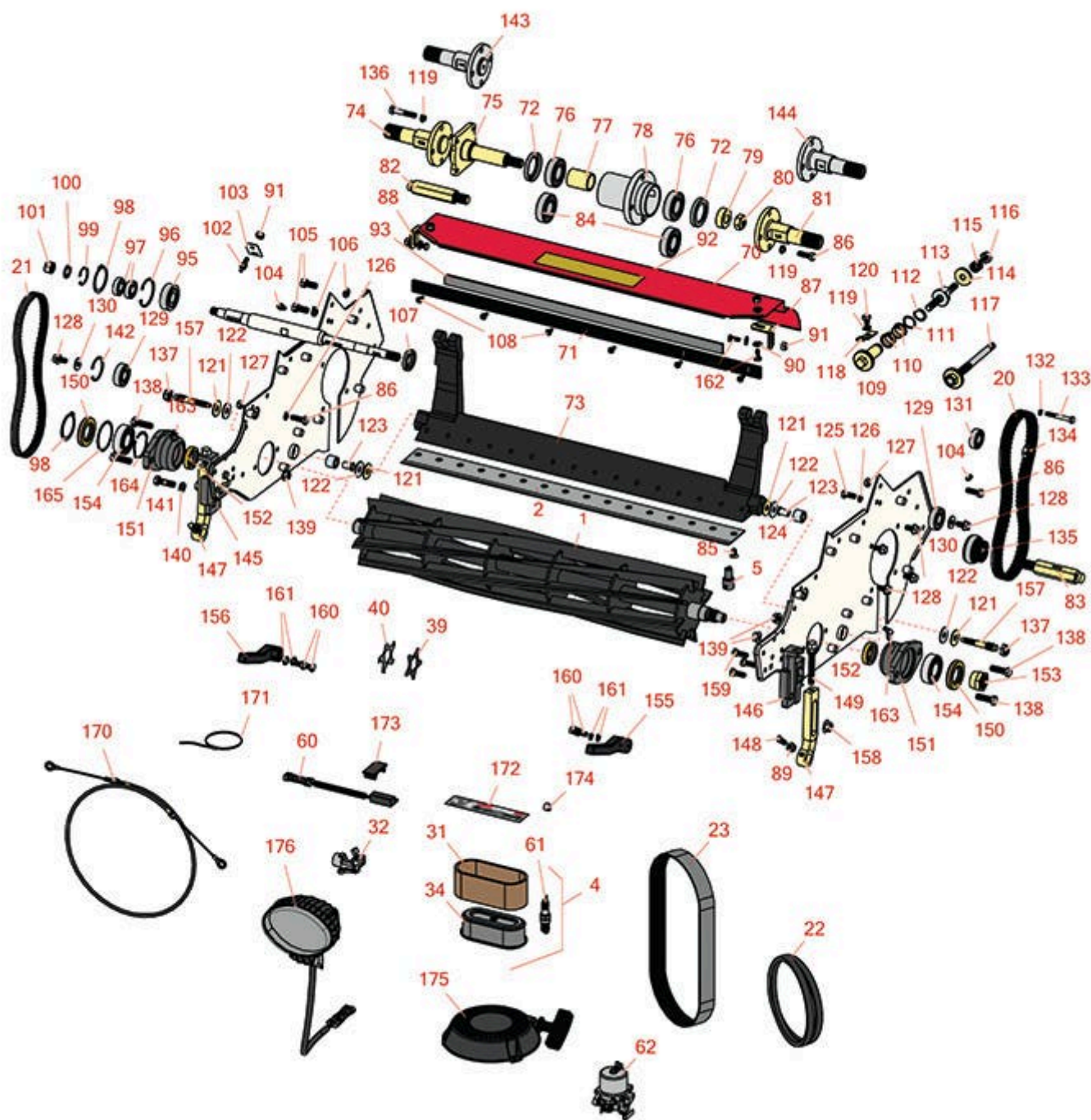




# Replaces Toro Greensmaster 1600 Parts

Mower - Model 04060

Reel & Bedknife



All original equipment manufacturers names and part numbers are used for identification purposes only, and we are in no way implying that our products are original equipment parts. Prices subject to change without notice.



# Replaces Toro Greensmaster 1600 Parts

Mower - Model 04060

Reel & Bedknife



Item No	R&R Part No.	OEM Part No.	Description	Qty Req	Price Each	Order Quantity
---------	--------------	--------------	-------------	---------	------------	----------------

## R&R Reels, Lifetime Guaranteed

1	<b>R95-0900</b>	93-9029, 95-0900	Reel - 8 Blade 26 in	1	<b>323.65</b>	
---	-----------------	---------------------	----------------------	---	---------------	--

*Detail Description: R&R Reel blades are manufactured from high carbon-boron alloy steel and then hardened to RC46-49 to match the temper of our bedknives and original equipment bedknives. All R&R Reels are cylindrically ground on bearing surfaces and then relief ground. Reels are then precision computer balanced for extended bearing and reel life. R&R Products Reels are guaranteed against defects in material and workmanship for the life of the reel under normal use.:*

1	<b>R112-9276</b>	112-9276	Reel - 11 Blade 26 in	1	<b>338.20</b>	
---	------------------	----------	-----------------------	---	---------------	--

*Detail Description: R&R Reel blades are manufactured from high carbon-boron alloy steel and then hardened to RC46-49 to match the temper of our bedknives and original equipment bedknives. All R&R Reels are cylindrically ground on bearing surfaces and then relief ground. Reels are then precision computer balanced for extended bearing and reel life. R&R Products Reels are guaranteed against defects in material and workmanship for the life of the reel under normal use.:*

## R&R Bedknives, Lifetime Guaranteed

2	<b>R150467</b>		Bedknife - Thick	1	<b>64.85</b>	
---	----------------	--	------------------	---	--------------	--

*Detail Description: R&R Bedknives are manufactured from high carbon-boron alloy steel and then hardened to RC46-49 to match the temper of our reel blades and original equipment reels. Bedknives are surface ground on the top and front edge and straightened three times before being packaged with oil for rust prevention. All R&R Bedknives now have an increased front edge grind for added life. All R&R Bedknives are guaranteed against defects in material and workmanship under normal use for the life of the part.:*

2	<b>R93-9015</b>	93-9015	Bedknife - Thin	1	<b>55.85</b>	
---	-----------------	---------	-----------------	---	--------------	--

*Detail Description: R&R Bedknives are manufactured from high carbon-boron alloy steel and then hardened to RC46-49 to match the temper of our reel blades and original equipment reels. Bedknives are surface ground on the top and front edge and straightened three times before being packaged with oil for rust prevention. All R&R Bedknives now have an increased front edge grind for added life. All R&R Bedknives are guaranteed against defects in material and workmanship under normal use for the life of the part.:*

2	<b>R94-5885</b>	94-5885	Bedknife - Tournament	1	<b>56.05</b>	
---	-----------------	---------	-----------------------	---	--------------	--

All original equipment manufacturers names and part numbers are used for identification purposes only, and we are in no way implying that our products are original equipment parts. Prices subject to change without notice.



# Replaces Toro Greensmaster 1600 Parts

Mower - Model 04060

Reel & Bedknife



Item No	R&R Part No.	OEM Part No.	Description	Qty Req	Price Each	Order Quantity
---------	--------------	--------------	-------------	---------	------------	----------------

*Detail Description:* R&R Bedknives are manufactured from high carbon-boron alloy steel and then hardened to RC46-49 to match the temper of our reel blades and original equipment reels. Bedknives are surface ground on the top and front edge and straightened three times before being packaged with oil for rust prevention. All R&R Bedknives now have an increased front edge grind for added life. All R&R Bedknives are guaranteed against defects in material and workmanship under normal use for the life of the part.:

2	<b>R104-2646</b>	104-2646	Bedknife - High Cut 5/16-1 in	1	<b>54.95</b>	
---	------------------	----------	-------------------------------	---	--------------	--

*Detail Description:* R&R Bedknives are manufactured from high carbon-boron alloy steel and then hardened to RC46-49 to match the temper of our reel blades and original equipment reels. Bedknives are surface ground on the top and front edge and straightened three times before being packaged with oil for rust prevention. All R&R Bedknives now have an increased front edge grind for added life. All R&R Bedknives are guaranteed against defects in material and workmanship under normal use for the life of the part.:

2	<b>R107-8181</b>	107-8181	Bedknife - Super Thick Cut	1	<b>55.30</b>	
---	------------------	----------	----------------------------	---	--------------	--

*Detail Description:* R&R Bedknives are manufactured from high carbon-boron alloy steel and then hardened to RC46-49 to match the temper of our reel blades and original equipment reels. Bedknives are surface ground on the top and front edge and straightened three times before being packaged with oil for rust prevention. All R&R Bedknives now have an increased front edge grind for added life. All R&R Bedknives are guaranteed against defects in material and workmanship under normal use for the life of the part.:

## Overhaul Kits & Service Tools

4	<b>R30067</b>	30067	Filter Kit - 400 Hour Maintenance	1	<b>0.00</b>	
---	---------------	-------	-----------------------------------	---	-------------	--

*Detail Description:* Includes: 1 ea: RAK11013-2132 Air Filter, RAK11013-2133 Air Filter & RN7734 NGK Spark Plug:

5	<b>R51-0880</b>	51-0880	Bedknife Screw Driver Tool	1	<b>37.45</b>	
---	-----------------	---------	----------------------------	---	--------------	--

*Detail Description:* Easily install and remove bed knife screws with the help of a ratchet with 3/8" drive. Tool manufactured with hardened alloy steel.:

## Belts

20	<b>R150527</b>	65-6210	Belt - Drum Drive	1	<b>23.65</b>	
----	----------------	---------	-------------------	---	--------------	--

21	<b>R150525</b>	65-6200	Belt - Reel Drive	1	<b>17.70</b>	
----	----------------	---------	-------------------	---	--------------	--

All original equipment manufacturers names and part numbers are used for identification purposes only, and we are in no way implying that our products are original equipment parts. Prices subject to change without notice.



# Replaces Toro Greensmaster 1600 Parts

Mower - Model 04060

Reel & Bedknife



Item No	R&R Part No.	OEM Part No.	Description	Qty Req	Price Each	Order Quantity
22	<b>R92-9218</b>	92-9218	Belt - Engine Set of 2	1	<b>23.50</b>	
23	<b>R65-9080</b>	65-9080	Belt - Countershaft	1	<b>39.05</b>	
<b>Filters</b>						
30	<b>RAK11013-2132</b>	93-8636	Kawasaki Element-Air Filter	1	<b>17.60</b>	
30	<b>RRF10182</b>	93-8636	SilverGuard Air Filter	1	<b>15.60</b>	
31	<b>RAK11013-2133</b>	93-8637	Kawasaki Pre Cleaner Foam - Air Filter	1	<b>6.05</b>	
31	<b>RRF10410</b>	93-8637	SilverGuard Foam Filter	1	<b>3.20</b>	
32	<b>R121-0675</b>	121-0675	Fuel Strainer Assy	1	<b>25.70</b>	
<b>Gauges and Controls</b>						
60	<b>R100-1270</b>	100-1270	Sensor - Proximity	1	<b>74.85</b>	
61	<b>RN7131</b>	108-2557	NGK Spark Plug - BPR6ES	1	<b>4.80</b>	
61	<b>RN7734</b>	108-2557, 93-8584	NGK Spark Plug - BPR5ES	1	<b>4.80</b>	
62	<b>R115-1869</b>	115-1869	Carburetor Assy	1	<b>181.20</b>	
<b>Blades</b>						
40	<b>R110-2393</b>	110-2393	Verti-Cut Blade - 2-3/8 w/7/8 Hex Carbide Tipped	42	<b>7.95</b>	
41	<b>R70-1170</b>	70-1170	Verti-Cut Blade - 2-3/8 w/7/8 Hex	42	<b>1.25</b>	
<b>Other Parts Available</b>						
70	<b>R110-7370</b>	110-7370	Grass Shield Assy	1	<b>75.05</b>	
70	<b>R94-9009</b>	94-9009	Shield - Grass	1	<b>61.20</b>	

All original equipment manufacturers names and part numbers are used for identification purposes only, and we are in no way implying that our products are original equipment parts. Prices subject to change without notice.



# Replaces Toro Greensmaster 1600 Parts

Mower - Model 04060

Reel & Bedknife



Item No	R&R Part No.	OEM Part No.	Description	Qty Req	Price Each	Order Quantity
71	<b>R94-5879</b>	94-5879	Bar - Cut-Off	1	<b>15.15</b>	
72	<b>R253-159</b>	253-159	Seal - Drum	2	<b>6.15</b>	
73	<b>R112-9278-03</b>	112-9278-03	Bedbar - Aggressive - 26 in	1	<b>419.95</b>	
<i>Tech Note: Ser# 280000001-311999999:</i>						
73	<b>R93-9049-01</b>	93-9049, 93-9049-01	Bed Bar	1	<b>206.55</b>	
<i>Tech Note: Ser# 60001-99999 and 200000001-270999999:</i>						
74	<b>R88-7510</b>	88-7510	Shaft - Extension RH Drum	1	<b>78.65</b>	
75	<b>R94-5850</b>	94-5850	Spindle - Rear Roller Drum	1	<b>165.25</b>	
76	<b>RA203605</b>	251-82, 6610	Bearing	2	<b>16.15</b>	
77	<b>R65-6520</b>	65-6520	Spacer	1	<b>8.30</b>	
78	<b>R132-6971</b>	132-6971, 94-5852	Hub-Drum	1	<b>115.65</b>	
79	<b>R65-6530</b>	65-6530	Spacer - Seal	1	<b>8.25</b>	
80	<b>R3296-33</b>	3296-33	Locknut - 5/8-18 ESNA Jam	1	<b>1.40</b>	
81	<b>R88-7520</b>	88-7520	Shaft - Extension LH Drum	1	<b>84.95</b>	
82	<b>R88-7590</b>	88-7590	Shaft - Transport Wheel RH	1	<b>25.30</b>	
83	<b>R88-7580</b>	88-7580	Shaft - Transport Wheel LH	1	<b>25.30</b>	
84	<b>R251-257</b>	251-257, 251-339	Bearing	2	<b>10.45</b>	
85	<b>R150477</b>	57-4910	Screw - Bedknife 5/16-18 x 1/2	16	<b>0.36</b>	
85	<b>R119-4151</b>	119-4151	Screw - Bedknife 5/16-18 x 17/32	16	<b>0.29</b>	

All original equipment manufacturers names and part numbers are used for identification purposes only, and we are in no way implying that our products are original equipment parts. Prices subject to change without notice.



# Replaces Toro Greensmaster 1600 Parts

Mower - Model 04060

Reel & Bedknife



Item No	R&R Part No.	OEM Part No.	Description	Qty Req	Price Each	Order Quantity
86	<b>R322-5</b>	01-178-0508, 20-26-AD, 20-26-AGD, 30-9000, 322-5, 513341, 519755, 908019P, N/A	Bolt - Hex HD 5/16-18 x 1	3	<b>0.42</b>	
87	<b>R65-6450</b>	65-6450	Bracket - LH	1	<b>4.75</b>	
88	<b>R65-6460</b>	65-6460	Bracket - RH	1	<b>4.75</b>	
89	<b>R443106</b>	01-188-0518, 22-12-AJD, 32111-4, 3217-4, 3217-6, 3218-2, 513295, 513412, 915112P, 915978, 915979	Nut - 5/16-18 Y/Zinc Plated	2	<b>0.20</b>	
90	<b>R3256-22</b>	24-9-BD, 3-1032, 3256-1, 3256-22, 93-0954, 93-0989	Washer - Flat 1/4 Yellow	6	<b>0.13</b>	
91	<b>R301504</b>	2296-42, 301504, 32127-24, 32128-33, 32146-17, 3296-16, 3296-42, 3296-42 , 915661P	Locknut - ESNA 1/4-20	4	<b>0.19</b>	
92	<b>R93-8064</b>	93-8064	Decal - Warning	1	<b>2.65</b>	
93	<b>R95-1636</b>	95-1636	Seal - Strip Grass Shield	1	<b>3.85</b>	

All original equipment manufacturers names and part numbers are used for identification purposes only, and we are in no way implying that our products are original equipment parts. Prices subject to change without notice.



## Replaces Toro Greensmaster 1600 Parts

Mower - Model 04060

Reel & Bedknife



Item No	R&R Part No.	OEM Part No.	Description	Qty Req	Price Each	Order Quantity
95	<b>R251-318</b>	251-11, 251-204, 251-318, 251-38, 251-89	Bearing - Ball	1	<b>14.05</b>	
96	<b>R32151-75</b>	100-6594, 19-4590, 32120-11, 32120-75, 32151-75	Retaining Ring	2	<b>2.55</b>	
97	<b>R251-336</b>	251-336	Bearing	2	<b>25.40</b>	
98	<b>R32151-95</b>	32151-90, 32151-95	Retaining Ring	1	<b>3.05</b>	
99	<b>R32151-89</b>	32151-89	Retaining Ring - Bowed	1	<b>1.35</b>	
100	<b>R3254-4</b>	21-3890, 26-8050, 3254-4	Washer - Lock 1/2 Z Int Star	1	<b>0.34</b>	
101	<b>R3219-5</b>	01-188-0820, 22-15-BJD, 22-15-BJKD, 3219-5	Nut - 1/2-20	1	<b>0.55</b>	
102	<b>R93-9014</b>	65-7020, 92-7676, 93-9014	Pin-Clutch, Actuat	1	<b>9.20</b>	
103	<b>R65-6290</b>	65-6259, 65-6290	Spring-Detent	1	<b>7.80</b>	

All original equipment manufacturers names and part numbers are used for identification purposes only, and we are in no way implying that our products are original equipment parts. Prices subject to change without notice.





# Replaces Toro Greensmaster 1600 Parts

Mower - Model 04060

Reel & Bedknife



Item No	R&R Part No.	OEM Part No.	Description	Qty Req	Price Each	Order Quantity
104	<b>R302-5</b>	21-6010, 302-11, 302-37, 302-47, 302-5, 302-57, 302-58, 302-6, 31-0300, 32-9660, 60-0800, 62-3880, 92-4181	Fitting - Grease	2	<b>0.30</b>	
105	<b>R400260</b>	01-178-0605, 18-4100, 19-8270, 323-3, 323-33, 323-34, 323-5	Bolt - Hex HD 3/8-16 x 7/8	2	<b>0.79</b>	
106	<b>R3253-21</b>	215-51, 30-8470, 3253-21, Jul-12	Washer - Lock 3/8	4	<b>0.15</b>	
107	<b>R364170</b>	253-118, 62-3400	Seal	1	<b>5.75</b>	
108	<b>R32144-73</b>	104-2065, 32144-73	Screw - Machine Hex Washer Head	5	<b>0.39</b>	
109	<b>R106-5363</b>	106-5363	Shaft - Adjusting - Bed Bar - Stainless	2	<b>28.70</b>	
<i>Tech Note: Ser# 280000001-311999999:</i>						
110	<b>R106-5344</b>	106-5344	Bushing - Flanged and Keyed	4	<b>5.35</b>	
111	<b>R106-5335</b>	106-5335	Wave Washer - Reel Adjusting	2	<b>2.65</b>	
112	<b>R32120-93</b>	32120-93	Snap Ring - HD	2	<b>1.30</b>	

All original equipment manufacturers names and part numbers are used for identification purposes only, and we are in no way implying that our products are original equipment parts. Prices subject to change without notice.





# Replaces Toro Greensmaster 1600 Parts

Mower - Model 04060

Reel & Bedknife



Item No	R&R Part No.	OEM Part No.	Description	Qty Req	Price Each	Order Quantity
113	<b>R99-2096</b>	99-2096	Screw - Bed Bar Adjustment - M10 Thrd 1 End	2	<b>36.30</b>	
114	<b>R99-2098</b>	99-2098	Washer - Bed Bar Adjuster	2	<b>2.25</b>	
115	<b>R99-3755</b>	99-3755	Spring - Bed Bar Adjusting	2	<b>3.75</b>	
116	<b>R33025-00</b>	32025-00, 33025-00	Locknut - 10mm x 1.5 Jam	2	<b>0.57</b>	
117	<b>R94-5873</b>	94-5873	Handle - Adjusting Bed Bar	2	<b>46.50</b>	
<i>Tech Note: Ser# 60001-99999 and 200000001-270999999:</i>						
118	<b>R99-2097</b>	99-2097	Detent - Bed Bar Adjuster	2	<b>9.20</b>	
119	<b>R3253-4</b>	01-166-0110, 01-166-0510, 23-10-GD, 24-7170, 30-8520, 3253-4, 48-9350, 48-9360, 48-9570, 68-9420, 99-7577	Washer - Lock 5/16 Zinc	5	<b>0.15</b>	
120	<b>R322-26</b>	322-26	Bolt - Hx HD 5/16-18 x 3/8	2	<b>2.35</b>	
121	<b>R52-2860</b>	119-4150, 52-2860	Washer - Bed Bar Pivot	4	<b>0.70</b>	
122	<b>R52-2900</b>	52-2900	Washer - Nylon	4	<b>0.60</b>	
123	<b>R52-2890</b>	52-2890	Bushing - Flanged	2	<b>0.81</b>	
124	<b>R63-9510</b>	63-9480, 63-9510	Bushing - Rubber For Bed Bar	2	<b>4.85</b>	

All original equipment manufacturers names and part numbers are used for identification purposes only, and we are in no way implying that our products are original equipment parts. Prices subject to change without notice.



# Replaces Toro Greensmaster 1600 Parts

Mower - Model 04060

Reel & Bedknife



Item No	R&R Part No.	OEM Part No.	Description	Qty Req	Price Each	Order Quantity
125	R322-3	01-150-1420, 01-178-0506, 20-24-AD, 20-24-AGD, 322-3, 48-9270, 513339, 908017P	Bolt - Hex HD 5/16-18 x 3/4	2	0.65	
126	R3254-2	3254-2	Washer-Lock, 5/16 Int Star	2	0.20	
127	R3296-29	1-804256, 3290-357, 3296-29, 915662P	Locknut - 5/16-18 ESNA	2	3.10	
128	R3234-14	3234-14, 3234-23	Bolt - Hex Serrated Washer HD	6	0.87	
129	R38-7820	100-1048, 251-277, 251-5, 38-7820	Bearing - Ball	1	5.05	
130	R88-7200	88-7200	Washer - Flat	2	2.50	
131	R251-338	251-338	Bearing - Ball	1	30.25	
132	R3254-8	3254-8	Washer - Lock 1/4 Int Star Z	1	0.08	
133	R400120	01-150-0990, 01-178-0416, 02-150-0990, 321-11, 3222-4, 33114-010, 33114-060, 513327, 908470	Bolt - Hex HD 1/4-20 x 2	8	0.83	
134	R3296-57	3296-57	Locknut - Nylon Zinc Jam	2	2.35	

All original equipment manufacturers names and part numbers are used for identification purposes only, and we are in no way implying that our products are original equipment parts. Prices subject to change without notice.



# Replaces Toro Greensmaster 1600 Parts

Mower - Model 04060

Reel & Bedknife



Item No	R&R Part No.	OEM Part No.	Description	Qty Req	Price Each	Order Quantity
135	R71-1360	251-219, 251-253, 251-254, 251-320, 71-1360, 88-7880, 94-3405	Bearing	2	20.20	
136	R19H3130	322-9, 3223-5	Bolt - Hex HD 5/16-18 x 1-3/4	1	0.88	
137	R3296-28	119-4154, 140-9234, 32127-34, 32128-7, 32128-8, 32136-7, 3296-28	Nut - 1/2-20 ESNA Jam	2	1.35	
138	R400264	01-150-0180, 01-178-0610, 20-48-AD, 20-48-AGD, 32-9160, 3224-3, 323-29, 323-7, 400264, 908035P	Bolt - Hex HD 3/8-16 x 1-1/4	2	0.42	
139	R3296-39	32127-25, 32128-36, 3290-357, 3296-17, 3296-22, 3296-39, 915663P, 99-7443	Locknut - 3/8-16 Nylon	3	1.50	
140	R3254-6	01-166-0010, 01-166-0280, 01-166-0610, 3253-5, 3254-18, 3254-6, 3290-223, 48-9370	Washer - Lock 3/8	2	0.08	

All original equipment manufacturers names and part numbers are used for identification purposes only, and we are in no way implying that our products are original equipment parts. Prices subject to change without notice.



# Replaces Toro Greensmaster 1600 Parts

Mower - Model 04060

Reel & Bedknife



Item No	R&R Part No.	OEM Part No.	Description	Qty Req	Price Each	Order Quantity
141	<b>R400258</b>	01-150-0800, 01-178-0600, 01-178-0606, 20-45-AD, 31-0200, 31-9910, 3224-1, 323-4	Bolt - Hex HD 3/8-16 x 3/4	2	<b>0.54</b>	
142	<b>RA170040</b>	32120-42, 52-6640, 74-9900, SG427625	Ring - Snap	1	<b>0.77</b>	
143	<b>R132-3841</b>	132-3841	Shaft- Drum Extension - RH	1	<b>67.20</b>	
144	<b>R132-3842</b>	132-3842	Shaft- Drum Extension - LH	1	<b>67.20</b>	
145	<b>R93-6048</b>	93-6048	Bracket - HOC RH	1	<b>27.05</b>	
146	<b>R93-6049</b>	93-6049	Bracket - HOC LH	1	<b>27.05</b>	
147	<b>R93-6090</b>	93-6090	Arm - Roller HOC	2	<b>50.70</b>	
148	<b>R3242-4</b>	3242-4	Screw - Set Sq HD 5/16-18 x 1	2	<b>1.75</b>	
149	<b>R93-6051</b>	93-6051	Bolt - HOC	2	<b>22.55</b>	
150	<b>R253-163</b>	253-163	Seal - Reel	2	<b>7.10</b>	
151	<b>R65-8640</b>	65-6090, 65-8640	Housing - Bearing	2	<b>81.60</b>	
152	<b>R253-96</b>	253-96	Seal - Oil Single Lip Reel	2	<b>5.45</b>	
153	<b>R92-7302</b>	65-8240, 86-7160, 92-7302	Locknut - Reel	1	<b>8.05</b>	
154	<b>R251-342</b>	251-342	Bearing - Reel	2	<b>24.45</b>	
155	<b>R93-9018</b>	93-9018	Rod - Basket LH	1	<b>16.60</b>	

All original equipment manufacturers names and part numbers are used for identification purposes only, and we are in no way implying that our products are original equipment parts. Prices subject to change without notice.



## Replaces Toro Greensmaster 1600 Parts

Mower - Model 04060

Reel & Bedknife



Item No	R&R Part No.	OEM Part No.	Description	Qty Req	Price Each	Order Quantity
156	<b>R93-9017</b>	93-9017	Rod - RH Basket	1	<b>16.60</b>	
157	<b>R65-6270</b>	119-4050, 65-6270	Bolt - Bed Bar	2	<b>14.65</b>	
157	<b>R117-9493</b>	117-9493	Bolt - Bed Bar - Hardened	1	<b>7.85</b>	
158	<b>R32128-21</b>	32128-21	Locknut - Flanged 3/8-16 Whiz Top Lock	2	<b>0.58</b>	
159	<b>R92-8914</b>	3231-5, 65-8530, 92-8914	Bolt - Tapered Face 5/16-18 x 7/8	4	<b>2.75</b>	
160	<b>R322-2</b>	322-2, 513338P	Bolt - Hex HD 5/16-18 x 5/8	4	<b>0.53</b>	
161	<b>R3255-8</b>	3255-8	Washer - Lock 5/16 Ext	4	<b>0.08</b>	
162	<b>R400106</b>	321-3, 513315, 908002P	Bolt - Hex HD 1/4-20 x 5/8	4	<b>0.29</b>	
163	<b>R700414</b>	302-11, 302-19, 302-4, 32-8170	Zerk - Grease 1/4-28 45 Deg	2	<b>0.84</b>	
164	<b>R3290-485</b>	3290-485	Washer - Wave	1	<b>3.25</b>	
165	<b>R32151-92</b>	32151-92	Retaining Ring	1	<b>5.10</b>	
170	<b>R94-5870</b>	94-5870	Cable - Clutch Assy	1	<b>27.40</b>	
171	<b>R3M41933</b>		Cable Ties - 6" Bulk Pkg/100	2	<b>27.75</b>	
<i>Detail Description: 3M Cable Ties are molded from 6/6 nylon and are available in a variety of sizes and styles, including weather-resistant black for outdoor use.:</i>						
172	<b>R67-7960</b>	27-2890, 62-5070, 67-7960	Decal - Warning	1	<b>2.90</b>	

All original equipment manufacturers names and part numbers are used for identification purposes only, and we are in no way implying that our products are original equipment parts. Prices subject to change without notice.



## Replaces Toro Greensmaster 1600 Parts

Mower - Model 04060

Reel & Bedknife



Item No	R&R Part No.	OEM Part No.	Description	Qty Req	Price Each	Order Quantity
173	<b>R99-7420</b>	100-8493, 99-7420	Plug-Hole	1	<b>4.80</b>	
174	<b>R65-7910</b>	65-7910	Spacer - Latch	2	<b>3.45</b>	
175	<b>R93-8552</b>	93-8552	Recoil Starter Assy	1	<b>78.85</b>	
176	<b>R151712</b>	108-6471, 112-9177, 94-9024	LED Oval Work Light - 12 LED 30w	2	<b>78.25</b>	

All original equipment manufacturers names and part numbers are used for identification purposes only, and we are in no way implying that our products are original equipment parts. Prices subject to change without notice.