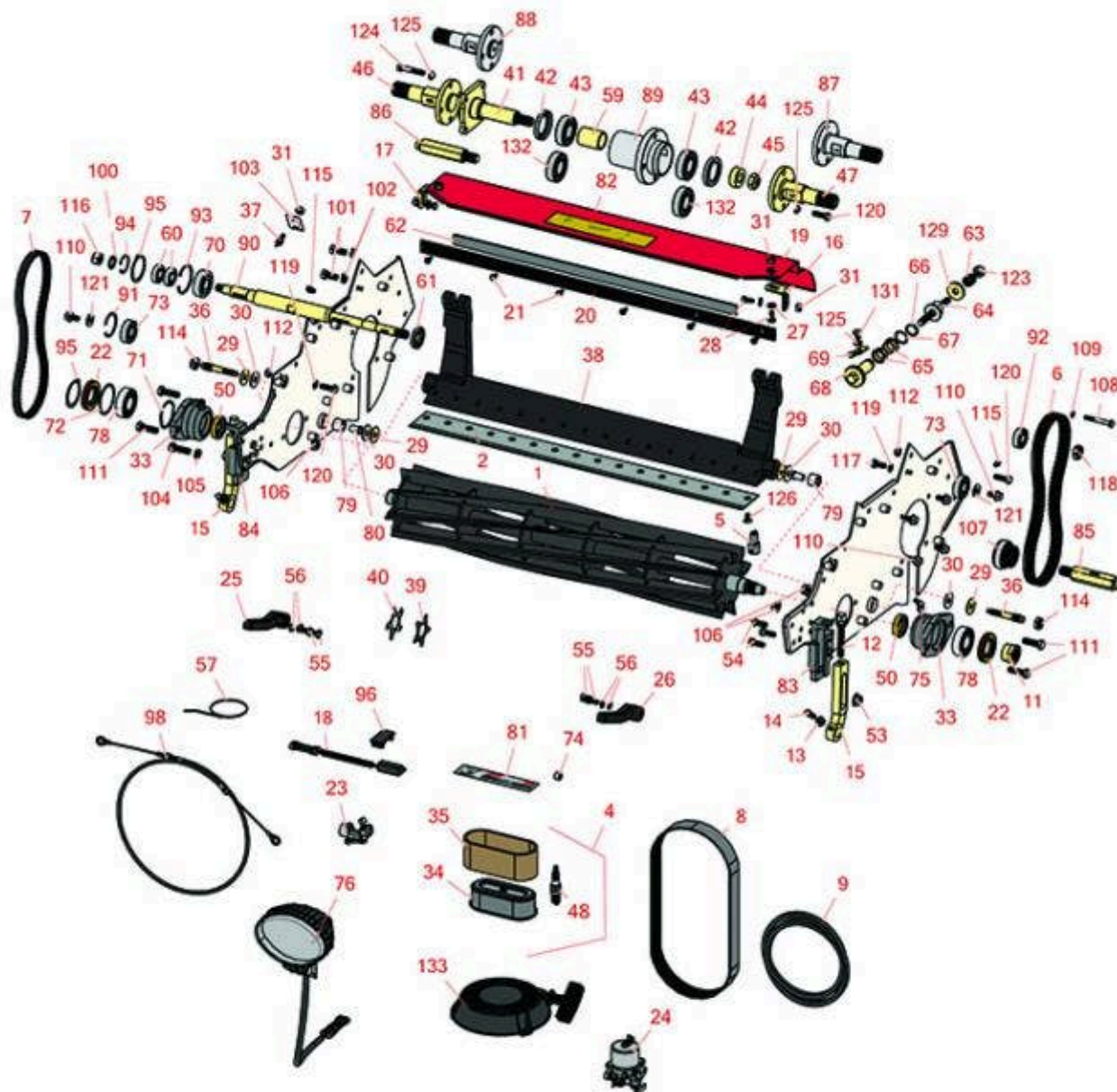


## Reel & Bedknife





# Replaces Toro Greensmaster 1600 Parts

Mower - Model 04035

Reel & Bedknife



Item No	R&R Part No.	OEM Part No.	Description	Qty Req	Price Each	Order Quantity
---------	--------------	--------------	-------------	---------	------------	----------------

## R&R Reels, Lifetime Guaranteed

1	<b>R95-0900</b>	93-9029, 95-0900	Reel - 8 Blade 26 in	1	<b>323.65</b>	
---	-----------------	---------------------	----------------------	---	---------------	--

*Detail Description: R&R Reel blades are manufactured from high carbon-boron alloy steel and then hardened to RC46-49 to match the temper of our bedknives and original equipment bedknives. All R&R Reels are cylindrically ground on bearing surfaces and then relief ground. Reels are then precision computer balanced for extended bearing and reel life. R&R Products Reels are guaranteed against defects in material and workmanship for the life of the reel under normal use.:*

1	<b>R112-9276</b>	112-9276	Reel - 11 Blade 26 in	1	<b>338.20</b>	
---	------------------	----------	-----------------------	---	---------------	--

*Detail Description: R&R Reel blades are manufactured from high carbon-boron alloy steel and then hardened to RC46-49 to match the temper of our bedknives and original equipment bedknives. All R&R Reels are cylindrically ground on bearing surfaces and then relief ground. Reels are then precision computer balanced for extended bearing and reel life. R&R Products Reels are guaranteed against defects in material and workmanship for the life of the reel under normal use.:*

## R&R Bedknives, Lifetime Guaranteed

2	<b>R150467</b>		Bedknife - Thick	1	<b>64.85</b>	
---	----------------	--	------------------	---	--------------	--

*Detail Description: R&R Bedknives are manufactured from high carbon-boron alloy steel and then hardened to RC46-49 to match the temper of our reel blades and original equipment reels. Bedknives are surface ground on the top and front edge and straightened three times before being packaged with oil for rust prevention. All R&R Bedknives now have an increased front edge grind for added life. All R&R Bedknives are guaranteed against defects in material and workmanship under normal use for the life of the part.:*

2	<b>R93-9015</b>	93-9015	Bedknife - Thin	1	<b>55.85</b>	
---	-----------------	---------	-----------------	---	--------------	--

*Detail Description: R&R Bedknives are manufactured from high carbon-boron alloy steel and then hardened to RC46-49 to match the temper of our reel blades and original equipment reels. Bedknives are surface ground on the top and front edge and straightened three times before being packaged with oil for rust prevention. All R&R Bedknives now have an increased front edge grind for added life. All R&R Bedknives are guaranteed against defects in material and workmanship under normal use for the life of the part.:*

2	<b>R94-5885</b>	94-5885	Bedknife - Tournament	1	<b>56.05</b>	
---	-----------------	---------	-----------------------	---	--------------	--

All original equipment manufacturers names and part numbers are used for identification purposes only, and we are in no way implying that our products are original equipment parts. Prices subject to change without notice.



# Replaces Toro Greensmaster 1600 Parts

Mower - Model 04035

Reel & Bedknife



Item No	R&R Part No.	OEM Part No.	Description	Qty Req	Price Each	Order Quantity
---------	--------------	--------------	-------------	---------	------------	----------------

*Detail Description:* R&R Bedknives are manufactured from high carbon-boron alloy steel and then hardened to RC46-49 to match the temper of our reel blades and original equipment reels. Bedknives are surface ground on the top and front edge and straightened three times before being packaged with oil for rust prevention. All R&R Bedknives now have an increased front edge grind for added life. All R&R Bedknives are guaranteed against defects in material and workmanship under normal use for the life of the part.:

2	<b>R104-2646</b>	104-2646	Bedknife - High Cut 5/16-1 in	1	<b>54.95</b>	
---	------------------	----------	-------------------------------	---	--------------	--

*Detail Description:* R&R Bedknives are manufactured from high carbon-boron alloy steel and then hardened to RC46-49 to match the temper of our reel blades and original equipment reels. Bedknives are surface ground on the top and front edge and straightened three times before being packaged with oil for rust prevention. All R&R Bedknives now have an increased front edge grind for added life. All R&R Bedknives are guaranteed against defects in material and workmanship under normal use for the life of the part.:

2	<b>R107-8181</b>	107-8181	Bedknife - Super Thick Cut	1	<b>55.30</b>	
---	------------------	----------	----------------------------	---	--------------	--

*Detail Description:* R&R Bedknives are manufactured from high carbon-boron alloy steel and then hardened to RC46-49 to match the temper of our reel blades and original equipment reels. Bedknives are surface ground on the top and front edge and straightened three times before being packaged with oil for rust prevention. All R&R Bedknives now have an increased front edge grind for added life. All R&R Bedknives are guaranteed against defects in material and workmanship under normal use for the life of the part.:

## Overhaul Kits & Service Tools

4	<b>R30067</b>	30067	Filter Kit - 400 Hour Maintenance	1	<b>0.00</b>	
---	---------------	-------	-----------------------------------	---	-------------	--

*Detail Description:* Includes: 1 ea: RAK11013-2132 Air Filter, RAK11013-2133 Air Filter & RN7734 NGK Spark Plug:

5	<b>R51-0880</b>	51-0880	Bedknife Screw Driver Tool	1	<b>37.45</b>	
---	-----------------	---------	----------------------------	---	--------------	--

*Detail Description:* Easily install and remove bed knife screws with the help of a ratchet with 3/8" drive. Tool manufactured with hardened alloy steel.:

## Belts

6	<b>R150527</b>	65-6210	Belt - Drum Drive	1	<b>23.65</b>	
---	----------------	---------	-------------------	---	--------------	--

7	<b>R150525</b>	65-6200	Belt - Reel Drive	1	<b>17.70</b>	
---	----------------	---------	-------------------	---	--------------	--

All original equipment manufacturers names and part numbers are used for identification purposes only, and we are in no way implying that our products are original equipment parts. Prices subject to change without notice.



## Replaces Toro Greensmaster 1600 Parts

Mower - Model 04035

Reel & Bedknife



Item No	R&R Part No.	OEM Part No.	Description	Qty Req	Price Each	Order Quantity
8	<b>R65-9080</b>	65-9080	Belt - Countershaft	1	<b>39.05</b>	
9	<b>R92-9218</b>	92-9218	Belt - Engine Set of 2	1	<b>23.50</b>	
<b>Filters</b>						
18	<b>R100-1270</b>	100-1270	Sensor - Proximity	1	<b>74.85</b>	
23	<b>R121-0675</b>	121-0675	Fuel Strainer Assy	1	<b>25.70</b>	
24	<b>R115-1869</b>	115-1869	Carburetor Assy	1	<b>181.20</b>	
34	<b>RAK11013-2132</b>	93-8636	Kawasaki Element-Air Filter	1	<b>17.60</b>	
34	<b>RRF10182</b>	93-8636	SilverGuard Air Filter	1	<b>15.60</b>	
35	<b>RAK11013-2133</b>	93-8637	Kawasaki Pre Cleaner Foam - Air Filter	1	<b>6.05</b>	
35	<b>RRF10410</b>	93-8637	SilverGuard Foam Filter	1	<b>3.20</b>	
48	<b>RN7131</b>	108-2557	NGK Spark Plug - BPR6ES	1	<b>4.80</b>	
48	<b>RN7734</b>	108-2557, 93-8584	NGK Spark Plug - BPR5ES	1	<b>4.80</b>	
<b>Other Parts Available</b>						
10	<b>R150477</b>	57-4910	Screw - Bedknife 5/16-18 x 1/2	16	<b>0.36</b>	
11	<b>R92-7302</b>	65-8240, 86-7160, 92-7302	Locknut - Reel	1	<b>8.05</b>	
12	<b>R93-6051</b>	93-6051	Bolt - HOC	2	<b>22.55</b>	

All original equipment manufacturers names and part numbers are used for identification purposes only, and we are in no way implying that our products are original equipment parts. Prices subject to change without notice.



# Replaces Toro Greensmaster 1600 Parts

Mower - Model 04035

Reel & Bedknife



Item No	R&R Part No.	OEM Part No.	Description	Qty Req	Price Each	Order Quantity
13	R443106	01-188-0518, 22-12-AJD, 32111-4, 3217-4, 3217-6, 3218-2, 513295, 513412, 915112P, 915978, 915979	Nut - 5/16-18 Y/Zinc Plated	2	0.20	
14	R3242-4	3242-4	Screw - Set Sq HD 5/16-18 x 1	2	1.75	
15	R93-6090	93-6090	Arm - Roller HOC	2	50.70	
16	R65-6450	65-6450	Bracket - LH	1	4.75	
17	R65-6460	65-6460	Bracket - RH	1	4.75	
19	R110-7370	110-7370	Grass Shield Assy	1	75.05	
20	R94-5879	94-5879	Bar - Cut-Off	1	15.15	
21	R32144-73	104-2065, 32144-73	Screw - Machine Hex Washer Head	5	0.39	
22	R253-163	253-163	Seal - Reel	2	7.10	
25	R93-9017	93-9017	Rod - RH Basket	1	16.60	
26	R93-9018	93-9018	Rod - Basket LH	1	16.60	
27	R3256-22	24-9-BD, 3-1032, 3256-1, 3256-22, 93-0954, 93-0989	Washer - Flat 1/4 Yellow	6	0.13	
28	R400106	321-3, 513315, 908002P	Bolt - Hex HD 1/4-20 x 5/8	4	0.29	

All original equipment manufacturers names and part numbers are used for identification purposes only, and we are in no way implying that our products are original equipment parts. Prices subject to change without notice.



## Replaces Toro Greensmaster 1600 Parts

Mower - Model 04035

Reel & Bedknife



Item No	R&R Part No.	OEM Part No.	Description	Qty Req	Price Each	Order Quantity
29	<b>R52-2860</b>	119-4150, 52-2860	Washer - Bed Bar Pivot	4	<b>0.70</b>	
30	<b>R52-2900</b>	52-2900	Washer - Nylon	4	<b>0.60</b>	
31	<b>R301504</b>	2296-42, 301504, 32127-24, 32128-33, 32146-17, 3296-16, 3296-42, 3296-42 , 915661P	Locknut - ESNA 1/4-20	4	<b>0.19</b>	
33	<b>R65-8640</b>	65-6090, 65-8640	Housing - Bearing	2	<b>81.60</b>	
36	<b>R65-6270</b>	119-4050, 65-6270	Bolt - Bed Bar	2	<b>14.65</b>	
36	<b>R117-9493</b>	117-9493	Bolt - Bed Bar - Hardened	1	<b>7.85</b>	
37	<b>R93-9014</b>	65-7020, 92-7676, 93-9014	Pin-Clutch, Actuat	1	<b>9.20</b>	
38	<b>R112-9278-03</b>	112-9278-03	Bedbar - Aggressive - 26 in	1	<b>419.95</b>	
39	<b>R70-1170</b>	70-1170	Verti-Cut Blade - 2-3/8 w/7/8 Hex	42	<b>1.25</b>	
40	<b>R110-2393</b>	110-2393	Verti-Cut Blade - 2-3/8 w/7/8 Hex Carbide Tipped	42	<b>7.95</b>	
41	<b>R94-5850</b>	94-5850	Spindle - Rear Roller Drum	1	<b>165.25</b>	
42	<b>R253-159</b>	253-159	Seal - Drum	2	<b>6.15</b>	
43	<b>RA203605</b>	251-82, 6610	Bearing	2	<b>16.15</b>	
44	<b>R65-6530</b>	65-6530	Spacer - Seal	1	<b>8.25</b>	

All original equipment manufacturers names and part numbers are used for identification purposes only, and we are in no way implying that our products are original equipment parts. Prices subject to change without notice.



## Replaces Toro Greensmaster 1600 Parts

Mower - Model 04035

Reel & Bedknife



Item No	R&R Part No.	OEM Part No.	Description	Qty Req	Price Each	Order Quantity
45	<b>R3296-33</b>	3296-33	Locknut - 5/8-18 ESNA Jam	1	<b>1.40</b>	
46	<b>R88-7510</b>	88-7510	Shaft - Extension RH Drum	1	<b>78.65</b>	
47	<b>R88-7520</b>	88-7520	Shaft - Extension LH Drum	1	<b>84.95</b>	
50	<b>R253-96</b>	253-96	Seal - Oil Single Lip Reel	2	<b>5.45</b>	
53	<b>R32128-21</b>	32128-21	Locknut - Flanged 3/8-16 Whiz Top Lock	2	<b>0.58</b>	
54	<b>R92-8914</b>	3231-5, 65-8530, 92-8914	Bolt - Tapered Face 5/16-18 x 7/8	4	<b>2.75</b>	
55	<b>R322-2</b>	322-2, 513338P	Bolt - Hex HD 5/16-18 x 5/8	4	<b>0.53</b>	
56	<b>R3255-8</b>	3255-8	Washer - Lock 5/16 Ext	4	<b>0.08</b>	
57	<b>R3M41933</b>		Cable Ties - 6" Bulk Pkg/100	2	<b>27.75</b>	
<i>Detail Description: 3M Cable Ties are molded from 6/6 nylon and are available in a variety of sizes and styles, including weather-resistant black for outdoor use.:</i>						
59	<b>R65-6520</b>	65-6520	Spacer	1	<b>8.30</b>	
60	<b>R251-336</b>	251-336	Bearing	2	<b>25.40</b>	
61	<b>R364170</b>	253-118, 62-3400	Seal	1	<b>5.75</b>	
62	<b>R95-1636</b>	95-1636	Seal - Strip Grass Shield	1	<b>3.85</b>	
63	<b>R99-3755</b>	99-3755	Spring - Bed Bar Adjusting	2	<b>3.75</b>	
63	<b>R119-4156</b>	119-4156	Spring - Compression	2	<b>0.66</b>	
64	<b>R99-2096</b>	99-2096	Screw - Bed Bar Adjustment - M10 Thrd 1 End	2	<b>36.30</b>	

All original equipment manufacturers names and part numbers are used for identification purposes only, and we are in no way implying that our products are original equipment parts. Prices subject to change without notice.



## Replaces Toro Greensmaster 1600 Parts

Mower - Model 04035

Reel & Bedknife



Item No	R&R Part No.	OEM Part No.	Description	Qty Req	Price Each	Order Quantity
65	<b>R106-5344</b>	106-5344	Bushing - Flanged and Keyed	4	<b>5.35</b>	
66	<b>R32120-93</b>	32120-93	Snap Ring - HD	2	<b>1.30</b>	
67	<b>R106-5335</b>	106-5335	Wave Washer - Reel Adjusting	2	<b>2.65</b>	
67	<b>R119-4164</b>	119-4164	Washer - Wave	1	<b>2.45</b>	
68	<b>R106-5363</b>	106-5363	Shaft - Adjusting - Bed Bar - Stainless	2	<b>28.70</b>	
69	<b>R99-2097</b>	99-2097	Detent - Bed Bar Adjuster	2	<b>9.20</b>	
70	<b>R251-318</b>	251-11, 251-204, 251-318, 251-38, 251-89	Bearing - Ball	1	<b>14.05</b>	
71	<b>R3290-485</b>	3290-485	Washer - Wave	1	<b>3.25</b>	
72	<b>R32151-92</b>	32151-92	Retaining Ring	1	<b>5.10</b>	
73	<b>R38-7820</b>	100-1048, 251-277, 251-5, 38-7820	Bearing - Ball	1	<b>5.05</b>	
74	<b>R65-7910</b>	65-7910	Spacer - Latch	2	<b>3.45</b>	
75	<b>R700414</b>	302-11, 302-19, 302-4, 32-8170	Zerk - Grease 1/4-28 45 Deg	2	<b>0.84</b>	
76	<b>R151712</b>	108-6471, 112-9177, 94-9024	LED Oval Work Light - 12 LED 30w	2	<b>78.25</b>	
78	<b>R251-342</b>	251-342	Bearing - Reel	2	<b>24.45</b>	

All original equipment manufacturers names and part numbers are used for identification purposes only, and we are in no way implying that our products are original equipment parts. Prices subject to change without notice.





# Replaces Toro Greensmaster 1600 Parts

Mower - Model 04035

Reel & Bedknife



Item No	R&R Part No.	OEM Part No.	Description	Qty Req	Price Each	Order Quantity
79	<b>R63-9510</b>	63-9480, 63-9510	Bushing - Rubber For Bed Bar	2	<b>4.85</b>	
80	<b>R52-2890</b>	52-2890	Bushing - Flanged	2	<b>0.81</b>	
81	<b>R67-7960</b>	27-2890, 62-5070, 67-7960	Decal - Warning	1	<b>2.90</b>	
82	<b>R93-8064</b>	93-8064	Decal - Warning	1	<b>2.65</b>	
83	<b>R93-6049</b>	93-6049	Bracket - HOC LH	1	<b>27.05</b>	
84	<b>R93-6048</b>	93-6048	Bracket - HOC RH	1	<b>27.05</b>	
85	<b>R88-7580</b>	88-7580	Shaft - Transport Wheel LH	1	<b>25.30</b>	
86	<b>R88-7590</b>	88-7590	Shaft - Transport Wheel RH	1	<b>25.30</b>	
87	<b>R132-3842</b>	132-3842	Shaft- Drum Extension - LH	1	<b>67.20</b>	
88	<b>R132-3841</b>	132-3841	Shaft- Drum Extension - RH	1	<b>67.20</b>	
89	<b>R132-6971</b>	132-6971, 94-5852	Hub-Drum	1	<b>115.65</b>	
90	<b>R93-6056</b>	93-6056	Shaft - Power	1	<b>159.95</b>	
91	<b>RA170040</b>	32120-42, 52-6640, 74-9900, SG427625	Ring - Snap	1	<b>0.77</b>	
92	<b>R251-338</b>	251-338	Bearing - Ball	1	<b>30.25</b>	
93	<b>R32151-75</b>	100-6594, 19-4590, 32120-11, 32120-75, 32151-75	Retaining Ring	2	<b>2.55</b>	
94	<b>R32151-89</b>	32151-89	Retaining Ring - Bowed	1	<b>1.35</b>	

All original equipment manufacturers names and part numbers are used for identification purposes only, and we are in no way implying that our products are original equipment parts. Prices subject to change without notice.



# Replaces Toro Greensmaster 1600 Parts

Mower - Model 04035

Reel & Bedknife



Item No	R&R Part No.	OEM Part No.	Description	Qty Req	Price Each	Order Quantity
95	<b>R32151-95</b>	32151-90, 32151-95	Retaining Ring	1	<b>3.05</b>	
96	<b>R99-7420</b>	100-8493, 99-7420	Plug-Hole	1	<b>4.80</b>	
98	<b>R94-5870</b>	94-5870	Cable - Clutch Assy	1	<b>27.40</b>	
100	<b>R3254-4</b>	21-3890, 26-8050, 3254-4	Washer - Lock 1/2 Z Int Star	1	<b>0.34</b>	
101	<b>R400260</b>	01-178-0605, 18-4100, 19-8270, 323-3, 323-33, 323-34, 323-5	Bolt - Hex HD 3/8-16 x 7/8	2	<b>0.79</b>	
102	<b>R3253-21</b>	215-51, 30-8470, 3253-21, Jul-12	Washer - Lock 3/8	4	<b>0.15</b>	
103	<b>R65-6290</b>	65-6259, 65-6290	Spring-Detent	1	<b>7.80</b>	
104	<b>R400258</b>	01-150-0800, 01-178-0600, 01-178-0606, 20-45-AD, 31-0200, 31-9910, 3224-1, 323-4	Bolt - Hex HD 3/8-16 x 3/4	2	<b>0.54</b>	
105	<b>R3254-6</b>	01-166-0010, 01-166-0280, 01-166-0610, 3253-5, 3254-18, 3254-6, 3290-223, 48-9370	Washer - Lock 3/8	2	<b>0.08</b>	

All original equipment manufacturers names and part numbers are used for identification purposes only, and we are in no way implying that our products are original equipment parts. Prices subject to change without notice.



## Replaces Toro Greensmaster 1600 Parts

Mower - Model 04035

Reel & Bedknife



Item No	R&R Part No.	OEM Part No.	Description	Qty Req	Price Each	Order Quantity
106	R3296-39	32127-25, 32128-36, 3290-357, 3296-17, 3296-22, 3296-39, 915663P, 99-7443	Locknut - 3/8-16 Nylon	3	1.50	
107	R71-1360	251-219, 251-253, 251-254, 251-320, 71-1360, 88-7880, 94-3405	Bearing	2	20.20	
108	R400120	01-150-0990, 01-178-0416, 02-150-0990, 321-11, 3222-4, 33114-010, 33114-060, 513327, 908470	Bolt - Hex HD 1/4-20 x 2	8	0.83	
109	R3254-8	3254-8	Washer - Lock 1/4 Int Star Z	1	0.08	
110	R3234-14	3234-14, 3234-23	Bolt - Hex Serrated Washer HD	6	0.87	
111	R400264	01-150-0180, 01-178-0610, 20-48-AD, 20-48-AGD, 32-9160, 3224-3, 323-29, 323-7, 400264, 908035P	Bolt - Hex HD 3/8-16 x 1-1/4	2	0.42	

All original equipment manufacturers names and part numbers are used for identification purposes only, and we are in no way implying that our products are original equipment parts. Prices subject to change without notice.



## Replaces Toro Greensmaster 1600 Parts

Mower - Model 04035

Reel & Bedknife



Item No	R&R Part No.	OEM Part No.	Description	Qty Req	Price Each	Order Quantity
112	R3296-29	1-804256, 3290-357, 3296-29, 915662P	Locknut - 5/16-18 ESNA	2	3.10	
114	R3296-28	119-4154, 140-9234, 32127-34, 32128-7, 32128-8, 32136-7, 3296-28	Nut - 1/2-20 ESNA Jam	2	1.35	
115	R302-5	21-6010, 302-11, 302-37, 302-47, 302-5, 302-57, 302-58, 302-6, 31-0300, 32-9660, 60-0800, 62-3880, 92-4181	Fitting - Grease	2	0.30	
116	R3219-5	01-188-0820, 22-15-BJD, 22-15-BJKD, 3219-5	Nut - 1/2-20	1	0.55	
117	R322-3	01-150-1420, 01-178-0506, 20-24-AD, 20-24-AGD, 322-3, 48-9270, 513339, 908017P	Bolt - Hex HD 5/16-18 x 3/4	2	0.65	
118	R3296-57	3296-57	Locknut - Nylon Zinc Jam	2	2.35	
119	R3254-2	3254-2	Washer-Lock, 5/16 Int Star	2	0.20	

All original equipment manufacturers names and part numbers are used for identification purposes only, and we are in no way implying that our products are original equipment parts. Prices subject to change without notice.



## Replaces Toro Greensmaster 1600 Parts

Mower - Model 04035

Reel & Bedknife



Item No	R&R Part No.	OEM Part No.	Description	Qty Req	Price Each	Order Quantity
120	<b>R322-5</b>	01-178-0508, 20-26-AD, 20-26-AGD, 30-9000, 322-5, 513341, 519755, 908019P, N/A	Bolt - Hex HD 5/16-18 x 1	3	<b>0.42</b>	
121	<b>R88-7200</b>	88-7200	Washer - Flat	2	<b>2.50</b>	
123	<b>R33025-00</b>	32025-00, 33025-00	Locknut - 10mm x 1.5 Jam	2	<b>0.57</b>	
124	<b>R19H3130</b>	322-9, 3223-5	Bolt - Hex HD 5/16-18 x 1-3/4	1	<b>0.88</b>	
125	<b>R3253-4</b>	01-166-0110, 01-166-0510, 23-10-GD, 24-7170, 30-8520, 3253-4, 48-9350, 48-9360, 48-9570, 68-9420, 99-7577	Washer - Lock 5/16 Zinc	3	<b>0.15</b>	
129	<b>R99-2098</b>	99-2098	Washer - Bed Bar Adjuster	2	<b>2.25</b>	
131	<b>R322-26</b>	322-26	Bolt - Hx HD 5/16-18 x 3/8	2	<b>2.35</b>	
132	<b>R251-257</b>	251-257, 251-339	Bearing	2	<b>10.45</b>	
133	<b>R93-8552</b>	93-8552	Recoil Starter Assy	1	<b>78.85</b>	

All original equipment manufacturers names and part numbers are used for identification purposes only, and we are in no way implying that our products are original equipment parts. Prices subject to change without notice.