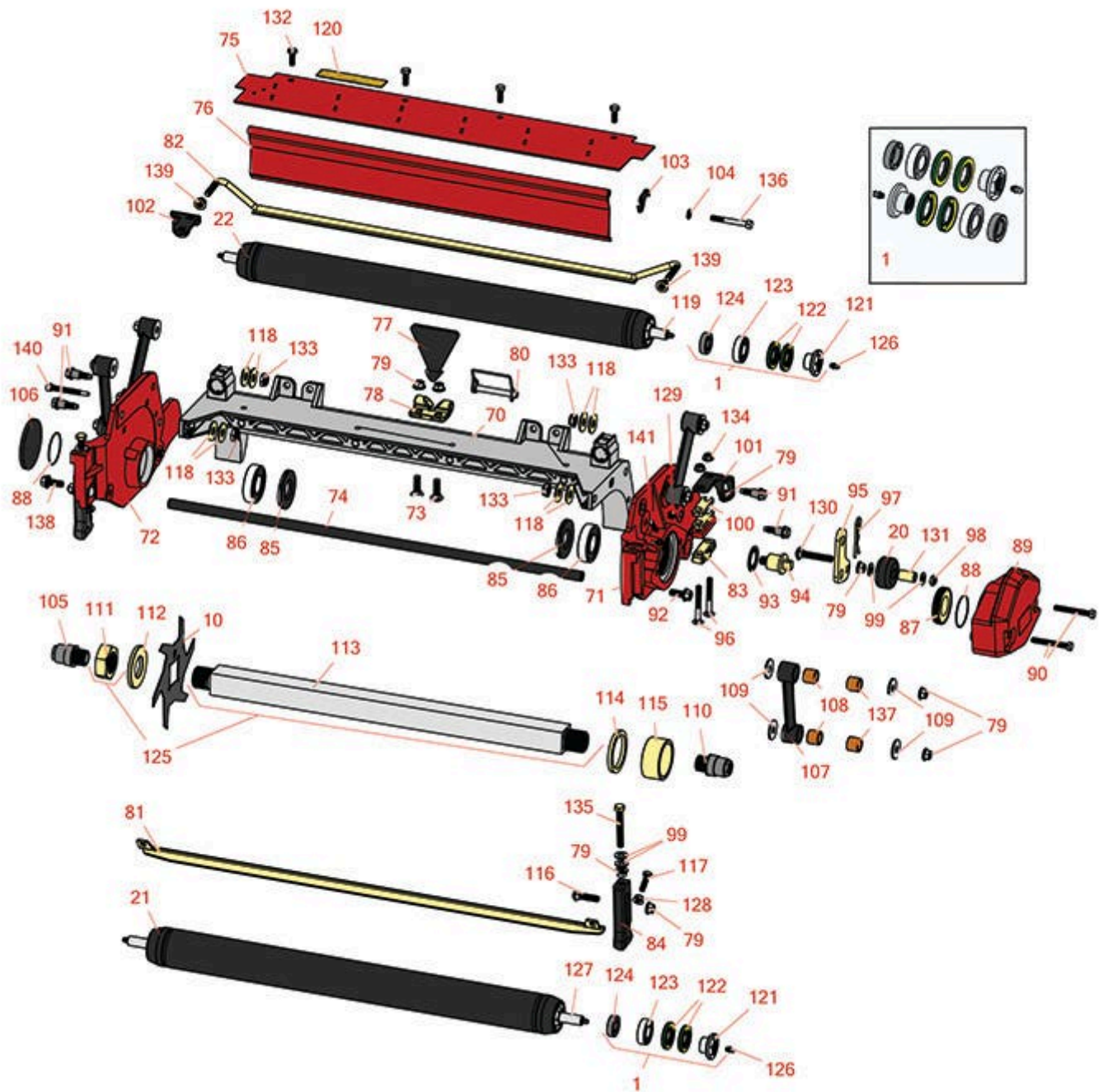




# Replaces Toro Reelmaster 3100-D Parts

27in DPA Verti-Cut Unit - Model 03184

Verti-Cut Reel & Frame



All original equipment manufacturers names and part numbers are used for identification purposes only, and we are in no way implying that our products are original equipment parts. Prices subject to change without notice.



# Replaces Toro Reelmaster 3100-D Parts

27in DPA Verti-Cut Unit - Model 03184

Verti-Cut Reel & Frame



Item No	R&R Part No.	OEM Part No.	Description	Qty Req	Price Each	Order Quantity
---------	--------------	--------------	-------------	---------	------------	----------------

## Overhaul Kits

1	<b>R114-5430</b>	114-5430	Overhaul Kit - Roller	0	<b>82.40</b>	
---	------------------	----------	-----------------------	---	--------------	--

*Tech Note: Includes 4 ea.: R112-7494 Seals; 2 ea.: R302-5 Grease Zerks, R114-3717 Seals, R112-5290 Bearings & R114-3745 Locknuts:*

## Verti-Cut Blades

10	<b>R93-3038-03</b>	93-3038, 93-3038-03	Blade - Vertical Mower 1/16x7.25	19	<b>4.20</b>	
----	--------------------	------------------------	-------------------------------------	----	-------------	--

10	<b>R106-8625</b>	106-8625	Blade - Carbide Tip	19	<b>18.30</b>	
----	------------------	----------	---------------------	----	--------------	--

## R&R Rollers

20	<b>R108-4293</b>	108-4293	Roller - Verti-Cut	2	<b>9.95</b>	
----	------------------	----------	--------------------	---	-------------	--

21	<b>R117-3759</b>	117-3759, 137-6124	Roller Assy - 27" Front Solid 2 1/2	1	<b>380.45</b>	
----	------------------	-----------------------	--	---	---------------	--

22	<b>R117-3756</b>	117-3756, 137-6123	Roller Assy - 27" Rear Solid 2 1/2	1	<b>358.85</b>	
----	------------------	-----------------------	---------------------------------------	---	---------------	--

## Other Parts Available

70	<b>R112-8935</b>	112-8935	Frame - Center - 27 in Unit	1	<b>377.65</b>	
----	------------------	----------	-----------------------------	---	---------------	--

71	<b>R117-3764</b>	117-3764	Plate-Side - LH - Verticut	1	<b>246.35</b>	
----	------------------	----------	----------------------------	---	---------------	--

72	<b>R117-3763</b>	117-3763	Plat E- Side - RH - Verticut	1	<b>246.35</b>	
----	------------------	----------	------------------------------	---	---------------	--

73	<b>R3231-25</b>	01-173-0610, 30-9970, 3231-25, 3231-3, 900064P	Bolt - Carriage 3/8-16 x 1-1/4	2	<b>0.66</b>	
----	-----------------	--	--------------------------------	---	-------------	--

74	<b>R112-8936</b>	112-8936	Tube- Support - 27 in Units	1	<b>33.20</b>	
----	------------------	----------	-----------------------------	---	--------------	--

75	<b>R112-8942</b>	112-8942	Front Grass Shield Assy - 27 in Units	1	<b>28.20</b>	
----	------------------	----------	--	---	--------------	--

All original equipment manufacturers names and part numbers are used for identification purposes only, and we are in no way implying that our products are original equipment parts. Prices subject to change without notice.



# Replaces Toro Reelmaster 3100-D Parts

27in DPA Verti-Cut Unit - Model 03184

Verti-Cut Reel & Frame



Item No	R&R Part No.	OEM Part No.	Description	Qty Req	Price Each	Order Quantity
76	<b>R112-8944-01</b>	112-8944-01	Rear Grass Shield Assy - 27 in Units	1	<b>45.25</b>	
77	<b>R110-4088-03</b>	110-4088-03, 119-8010-03	Kickstand	1	<b>21.25</b>	
78	<b>R110-4058</b>	110-4058	Bracket - Chain	1	<b>19.40</b>	
79	<b>R104-8301</b>	104-8301, 104-9301, 109-6658, 133-7570	Locknut - 3/8-16 Nylon Flanged	16	<b>0.84</b>	
80	<b>R107-7400</b>	107-7400	Pin - Lynch	1	<b>6.95</b>	
81	<b>R117-3753-03</b>	117-3753-03	Scraper-Full Front Roller 2 1/2 in	1	<b>50.50</b>	
82	<b>R117-0993</b>	117-0993	Scraper Rod Assy - 27 in	1	<b>93.65</b>	
83	<b>R106-3924</b>	106-3924	Bracket - Rear Roller	1	<b>15.70</b>	
84	<b>R107-2952</b>	107-2952	Bracket - Front Roller	1	<b>31.55</b>	
85	<b>R107-4028</b>	105-6757, 107-4028	Seal - Grease	2	<b>16.05</b>	
86	<b>R93-2489</b>	93-2489	Bearing - Reel	2	<b>21.20</b>	
87	<b>R107-2954</b>	107-2954	Nut - Bearing Adjuster	1	<b>11.50</b>	
88	<b>R112-6967</b>	112-6967	O-Ring	2	<b>1.95</b>	
89	<b>R119-0614-01</b>	119-0614-01	Weight	1	<b>76.40</b>	

All original equipment manufacturers names and part numbers are used for identification purposes only, and we are in no way implying that our products are original equipment parts. Prices subject to change without notice.



# Replaces Toro Reelmaster 3100-D Parts

27in DPA Verti-Cut Unit - Model 03184

Verti-Cut Reel & Frame



Item No	R&R Part No.	OEM Part No.	Description	Qty Req	Price Each	Order Quantity
90	<b>R101526</b>	01-150-0970, 01-178-0620, 101526, 20-53-AGD, 321-11, 3224-8, 323-11, 323-12, 323-31, 323-4, 323-47	Bolt - Hex HD 3/8-16 x 2-1/2 GR5	2	<b>0.91</b>	
91	<b>R107-2979</b>	107-2979	Bolt - Shoulder	6	<b>3.25</b>	
92	<b>R3234-11</b>	3234-11	Bolt - Hex Washer HD	2	<b>1.05</b>	
93	<b>R3254-21</b>	3254-21	Washer - 1 in Internal Star	2	<b>2.15</b>	
94	<b>R108-4289</b>	108-4289	Pin - Roller Mounting	2	<b>35.55</b>	
95	<b>R108-4286</b>	108-4286	Bracket - Adj	2	<b>9.80</b>	
96	<b>R3230-7</b>	25-33-AGD, 3230-9	Bolt - Carriage 5/16-18 x 2 1/2	4	<b>0.44</b>	
97	<b>R3290-355</b>	01-159-0050, 3290-355, 58-5370	Pin - Bridge - Snap	2	<b>2.35</b>	
98	<b>R3296-59</b>	3296-59	Locknut - 3/8-16 Nylon Jam	2	<b>0.65</b>	

All original equipment manufacturers names and part numbers are used for identification purposes only, and we are in no way implying that our products are original equipment parts. Prices subject to change without notice.



# Replaces Toro Reelmaster 3100-D Parts

27in DPA Verti-Cut Unit - Model 03184

Verti-Cut Reel & Frame



Item No	R&R Part No.	OEM Part No.	Description	Qty Req	Price Each	Order Quantity
99	<b>R453011</b>	01-166-0100, 01-166-0120, 01-166-0270, 01-166-0500, 01-166-0600, 01-166-0620, 132-4593, 2356-3, 237-12, 24-10-AD, 24-11-AD, 24-11-BD, 24-12-AD, 24-12-BD, 30-9310, 32-8190, 3256-24, 3256-3, 3256-36, 3256-4, 453011, 47-9950, 48-9220, 513458, 7-0052	Washer - Flat 3/8 SAE Y/Zinc	8	<b>0.11</b>	
100	<b>R119-0626</b>	119-0626	Shim - Roller - 1/4 in - Slotted	4	<b>5.45</b>	
101	<b>R107-3279</b>	107-3279	Bracket - Scraper - LH	1	<b>16.40</b>	
102	<b>R107-3281</b>	107-3281	Bracket - Scraper - RH	1	<b>16.40</b>	
103	<b>R108-4961</b>	108-4961	Tab - Stop - Shield	1	<b>26.35</b>	
104	<b>R3256-74</b>	3256-74	Washer - Flat	1	<b>0.65</b>	
105	<b>R108-4978</b>	108-4978, 131-0516	Insert - RH - Verti-Cut Shaft	1	<b>77.40</b>	
106	<b>R94-2703</b>	94-2703	Plug - Plastic Spindle Housing	1	<b>2.05</b>	
107	<b>R16-9759</b>	16-9759	Link Assy	4	<b>44.50</b>	
108	<b>R93-6981</b>	93-6981	Spacer	8	<b>4.60</b>	

All original equipment manufacturers names and part numbers are used for identification purposes only, and we are in no way implying that our products are original equipment parts. Prices subject to change without notice.



# Replaces Toro Reelmaster 3100-D Parts

27in DPA Verti-Cut Unit - Model 03184

Verti-Cut Reel & Frame



Item No	R&R Part No.	OEM Part No.	Description	Qty Req	Price Each	Order Quantity
109	<b>R93-8806</b>	93-8806	Washer-Hardened	16	<b>1.45</b>	
110	<b>R108-4977</b>	108-4977, 131-0515	Insert - LH - Verti-Cut Shaft	1	<b>77.40</b>	
111	<b>R3220-25</b>	3220-25	Nut - Jam 1-3/8-12	1	<b>22.15</b>	
112	<b>R105-0173</b>	105-0173	Washer - Verticut Shaft 1/4 in	1	<b>12.65</b>	
113	<b>R117-3760</b>	117-3760	Shaft Only - V-Cut	1	<b>261.40</b>	
114	<b>R105-0177</b>	105-0177	Spacer - Verticut Shaft 1/4 in	1	<b>5.40</b>	
115	<b>R105-0172</b>	105-0172	Spacer - Verticut Shaft 1.2 in	18	<b>11.25</b>	
116	<b>R3231-4</b>	01-157-0440, 01-173-0612, 3231-4	Bolt - Carriage 3/8-16 x 1-1/2	2	<b>1.20</b>	
117	<b>R322-16</b>	322-16, Apr-00	Bolt - Hex HD 5/16-18 x 1-1/8	2	<b>1.65</b>	
118	<b>R453013</b>	01-166-0140, 01-166-0700, 3256-5, 80-4850	Washer - Flat 7/16	8	<b>0.26</b>	
119	<b>R112-8918</b>	112-8918	Shaft - Long - Rear Roller - 27" Units	1	<b>63.95</b>	
120	<b>R93-6688</b>	93-6688	Decal - Warning	1	<b>2.30</b>	
121	<b>R114-3745</b>	114-3745, 114-5411	Locknut - Bearing - Stainless	2	<b>19.15</b>	
122	<b>R112-7494</b>	112-7494	Seal	4	<b>5.15</b>	
123	<b>R112-5290</b>	112-5290, 251--346, 251-346, 72-5430	Bearing - Stainless	2	<b>10.30</b>	
124	<b>R114-3717</b>	114-3717	Seal	2	<b>2.35</b>	

All original equipment manufacturers names and part numbers are used for identification purposes only, and we are in no way implying that our products are original equipment parts. Prices subject to change without notice.



# Replaces Toro Reelmaster 3100-D Parts

27in DPA Verti-Cut Unit - Model 03184

Verti-Cut Reel & Frame



Item No	R&R Part No.	OEM Part No.	Description	Qty Req	Price Each	Order Quantity
125	<b>R119-0625</b>	119-0625	Shaft Assy - V-Cut	1	<b>298.50</b>	
126	<b>R302-5</b>	21-6010, 302-11, 302-37, 302-47, 302-5, 302-57, 302-58, 302-6, 31-0300, 32-9660, 60-0800, 62-3880, 92-4181	Fitting - Grease	2	<b>0.27</b>	
127	<b>R117-0957</b>	117-0957	Shaft - Front Roller - 27" Units	1	<b>61.20</b>	
128	<b>R445722</b>	30-8980, 32128-2, 32128-20, 32128-20, 445722	Nut - Serrated Washer	2	<b>0.66</b>	
129	<b>R170714</b>	302-34, 302-39, 62-3520	Fitting - Pressure Relief	2	<b>2.25</b>	
130	<b>R3231-7</b>	3231-33, 3231-7	Bolt - Carriage 3/8-16 x 2-1/4	2	<b>3.85</b>	
131	<b>R59-2580</b>	59-2580	Spacer - Wheel	2	<b>5.30</b>	
132	<b>R3234-7</b>	3234-7	Bolt - Hex Washer HD 5/16-18 x 5/8	4	<b>1.30</b>	
133	<b>R3296-28</b>	119-4154, 140-9234, 32127-34, 32128-7, 32128-8, 32136-7, 3296-28	Nut - 1/2-20 ESNA Jam	4	<b>1.25</b>	

All original equipment manufacturers names and part numbers are used for identification purposes only, and we are in no way implying that our products are original equipment parts. Prices subject to change without notice.



# Replaces Toro Reelmaster 3100-D Parts

27in DPA Verti-Cut Unit - Model 03184

Verti-Cut Reel & Frame



Item No	R&R Part No.	OEM Part No.	Description	Qty Req	Price Each	Order Quantity
134	<b>R104-8300</b>	104-8300, 104-8300 , 119-4041	Locknut - 5/16-18 Flanged Y/Zinc	4	<b>0.47</b>	
135	<b>R112-7451</b>	100-9429, 112-7451	Bolt - Hex Tap 3/8-16 x 2-3/4	2	<b>1.95</b>	
136	<b>R322-14</b>	01-150-0830, 01-178-0524, 30-8900, 322-14	Bolt - Hex HD 5/16-18 x 3 GR5	1	<b>2.15</b>	
137	<b>R94-8945</b>	94-8945	Bushing - Bronze - Link Bar	8	<b>2.55</b>	
138	<b>R323-6</b>	01-150-0010, 01-178-0608, 20-47-AD, 20-47-AGD, 3224-2, 323-6, 49-3510, 908034P, 908332	Bolt - Hex HD 3/8-16 x 1 GR5 YZ	2	<b>0.59</b>	
139	<b>R32128-43</b>	30-8990, 32128-43, 3290-357	Nut - Flanged Whiz - 3/8-16	2	<b>0.62</b>	
140	<b>R107-7773</b>	107-7773	Bolt - Soc HD Cap 5/16-18 x 2-1/2	1	<b>7.50</b>	
141	<b>R107-7447</b>	107-7447	Set Screw - 1/4 x 1-1/4 Sq HD	2	<b>0.81</b>	

All original equipment manufacturers names and part numbers are used for identification purposes only, and we are in no way implying that our products are original equipment parts. Prices subject to change without notice.