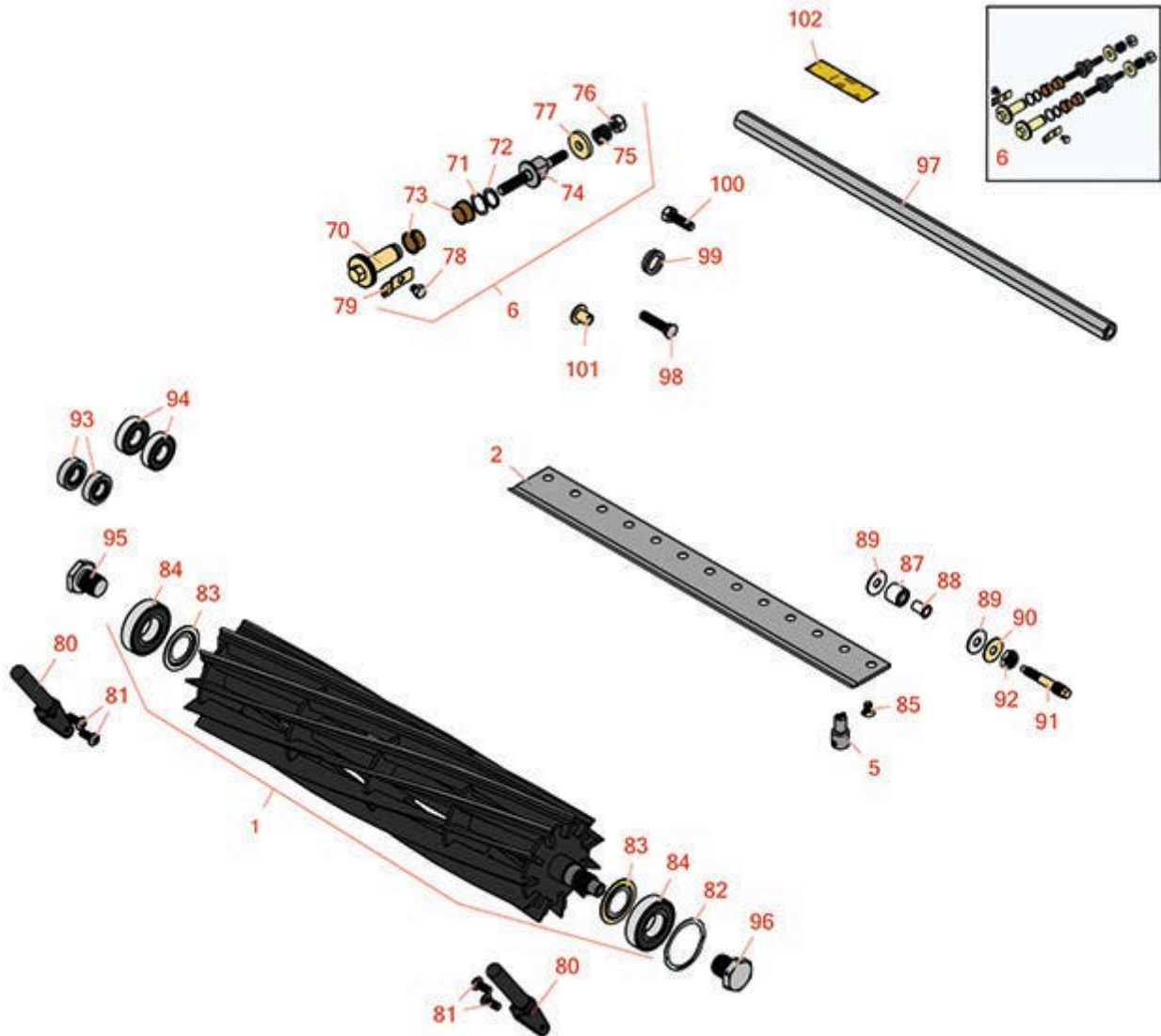




Replaces Toro Greensmaster 1021 Parts

Cutting Unit - Models 04832, 04833, 04834
Reel & Bedknife



All original equipment manufacturers names and part numbers are used for identification purposes only, and we are in no way implying that our products are original equipment parts. Prices subject to change without notice.



Replaces Toro Greensmaster 1021 Parts

Cutting Unit - Models 04832, 04833, 04834
Reel & Bedknife



Item No	R&R Part No.	OEM Part No.	Description	Qty Req	Price Each	Order Quantity
---------	--------------	--------------	-------------	---------	------------	----------------

R&R Reels, Lifetime Guaranteed

1	R137-8513	137-8513	Reel - 14 Blade Razor Series Low Drag w/Bearings and Seals 21	1	410.10	
---	------------------	----------	---	---	---------------	--

Tech Note: Uses special high alloy premium steel reel blades:

1	R137-8512	137-8512	Reel - 11 Blade Razor Series Low Drag w/Bearings and Seals 21	1	384.95	
---	------------------	----------	---	---	---------------	--

Tech Note: Uses special high alloy premium steel reel blades:

1	R137-8511	137-8511	Reel - 8 Blade Razor Series Low Drag w/Bearings and Seals 21	1	360.05	
---	------------------	----------	--	---	---------------	--

Tech Note: Uses special high alloy premium steel reel blades:

R&R Bedknives, Lifetime Guaranteed

2	R93-4262	65-8250, 93-4262, 93-4263	Bedknife - Micro Cut .062 - .187 HOC	1	36.50	
---	-----------------	---------------------------------	--------------------------------------	---	--------------	--

2	R108-4303	104-7720, 108-4303	Bedknife - Micro Cut Extended .062 - .187 HOC	1	43.15	
---	------------------	-----------------------	---	---	--------------	--

2	R108-4302	108-4301, 108-4302	Bedknife - Tournament Cut Extended .125 - .500 HOC	1	37.80	
---	------------------	-----------------------	--	---	--------------	--

2	R93-4263	63-8560, 66-9320, 93-4263, 93-6039	Bedknife - Tournament Cut .125 - .500 HOC	1	39.75	
---	-----------------	---	---	---	--------------	--

2	R93-4264	57-4960, 63-8470, 93-4264	Bedknife - Low Cut .187 - 1.00 HOC	1	38.10	
---	-----------------	---------------------------------	------------------------------------	---	--------------	--

2	R94-6392	62-2500, 94-6392	Bedknife - High Cut .312 - 1.00 HOC	1	39.25	
---	-----------------	---------------------	-------------------------------------	---	--------------	--

2	R63-8610	63-8610	Bedknife - Fairway Cut .375 - 1.00 HOC	1	39.50	
---	-----------------	---------	--	---	--------------	--

All original equipment manufacturers names and part numbers are used for identification purposes only, and we are in no way implying that our products are original equipment parts. Prices subject to change without notice.



Replaces Toro Greensmaster 1021 Parts

Cutting Unit - Models 04832, 04833, 04834
Reel & Bedknife



Item No	R&R Part No.	OEM Part No.	Description	Qty Req	Price Each	Order Quantity
2	R150462	63-8610, 94-6396	Bedknife - 7 Hole Thick 5/16	1	39.70	
2	R94-6396	10-4900, 54-9150, 94-6396, Oct-00	Bedknife - High Cut 5/16"-1" HOC	1	40.80	

R&R Razor Tool Steel, Lifetime Guaranteed

2	R115-1880	115-1880	Bedknife - Razor Tool Steel - 21 Micro Cut .062 - .187 HOC	1	79.90	
---	------------------	----------	--	---	--------------	--

Tech Note: Razor Tool Steel Bedknives are constructed from high grade tool steel for extended life and optimum cut.:

2	R115-1881	115-1881	Bedknife - Razor Tool Steel - 21 Tournament Cut .125 - .500 HOC	1	79.15	
---	------------------	----------	---	---	--------------	--

Tech Note: Razor Tool Steel Bedknives are constructed from high grade tool steel for extended life and optimum cut.:

2	R139-4320	139-4320	Bedknife - Razor, Microcut Short	1	67.17	
---	------------------	----------	----------------------------------	---	--------------	--

2	R139-4321	139-4321	Bedknife - Razor, Tournament Short	1	67.17	
---	------------------	----------	------------------------------------	---	--------------	--

Overhaul Kits and Service Tools

5	R51-0880	51-0880	Bedknife Screw Driver Tool	1	35.65	
---	-----------------	---------	----------------------------	---	--------------	--

6	R121-2637	121-2637	Overhaul Kit - DPA Adjusters	1	109.95	
---	------------------	----------	------------------------------	---	---------------	--

Other Parts Available

70	R106-5363	106-5363	Shaft - Adjusting - Bed Bar - Stainless	2	27.30	
----	------------------	----------	---	---	--------------	--

71	R119-4164	119-4164	Washer - Wave	2	2.45	
----	------------------	----------	---------------	---	-------------	--

72	R32120-93	32120-93	Snap Ring - HD	2	1.20	
----	------------------	----------	----------------	---	-------------	--

73	R106-5344	106-5344	Bushing - Flanged and Keyed	4	5.05	
----	------------------	----------	-----------------------------	---	-------------	--

74	R115-7039	115-7039	Screw - Adjuster - Bedbar	2	29.85	
----	------------------	----------	---------------------------	---	--------------	--

All original equipment manufacturers names and part numbers are used for identification purposes only, and we are in no way implying that our products are original equipment parts. Prices subject to change without notice.



Replaces Toro Greensmaster 1021 Parts

Cutting Unit - Models 04832, 04833, 04834
Reel & Bedknife



Item No	R&R Part No.	OEM Part No.	Description	Qty Req	Price Each	Order Quantity
74	R137-6130	137-6130	Screw - Adjuster - Hardened - Bedbar	2	34.85	
75	R119-4156	119-4156	Spring - Compression	2	0.66	
76	R3296-48	119-4039, 32146-7, 3296-34, 3296-48	Locknut - 7/16-14 ESNA	2	0.55	
77	R119-4155	119-4155	Washer - Hardened	2	7.50	
78	R114-9396	114-9396, 119-4067	Bolt - Hex HD 5/16-18 x 3/8	2	1.45	
79	R99-2097	99-2097	Detent - Bed Bar Adjuster	2	8.75	
80	R65-8570	65-7250, 65-8570	Rod - Mounting Grass Basket	2	22.75	
81	R3274-55	3274-55	Bolt - 5/16-18 x 3/4 Button HD Soc	4	0.94	
82	R105-5700	105-5700, 115-5258	Wave Washer - Bearing	1	2.55	
83	R115-3299	115-3299	Seal- Flocked	2	11.40	
83	R115-6923	115-6923	Shield - Bearing - Flocked	1	10.60	
84	R115-3296	115-3296	Bearing	2	23.50	
84	R140-5510	140-5510	Bearing - Sealed Stainless	2	21.34	
85	R119-4151	119-4151	Screw - Bedknife 5/16-18 x 17/32	13	0.29	
87	R119-4153	119-4153	Bushing - Rubber	2	4.70	
88	R52-2890	52-2890	Bushing - Flanged	2	0.77	
89	R52-2900	52-2900	Washer - Nylon	4	0.57	
90	R52-2860	119-4150, 52-2860	Washer - Bed Bar Pivot	2	0.67	

All original equipment manufacturers names and part numbers are used for identification purposes only, and we are in no way implying that our products are original equipment parts. Prices subject to change without notice.



Replaces Toro Greensmaster 1021 Parts

Cutting Unit - Models 04832, 04833, 04834
Reel & Bedknife



Item No	R&R Part No.	OEM Part No.	Description	Qty Req	Price Each	Order Quantity
91	R117-9493	117-9493	Bolt - Bed Bar - Hardened	2	5.85	
92	R3296-28	119-4154, 140-9234, 32127-34, 32128-7, 32128-8, 32136-7, 3296-28	Nut - 1/2-20 ESNA Jam	2	1.25	
93	R115-6869	115-6869	Bearing - Ball -Stainless	2	32.55	
94	R117-6831	117-6831	Bearing - Stainless	2	28.45	
95	R133-9168	133-9168	Nut - Reel - RH Thread	1	17.36	
96	R137-0326	137-0326	Nut - Reel - LH Thread	1	13.64	
97	R133-9127	133-9127	Support Rod - Frame	1	31.90	
98	R99-3773	99-3773	Bolt- Plow 3/8-16 x 1 3/4	2	9.55	
99	R138-1549	138-1549	Seal	1	6.85	
100	R3274-1	3274-1	Bolt - 3/8-16 x 1 1/4 Soc HD Cap	2	4.95	
101	R71-4411	71-4411	Spacer - Coupling	2	4.90	
102	R137-9706	137-9706	Decal- Warning	1	3.95	

All original equipment manufacturers names and part numbers are used for identification purposes only, and we are in no way implying that our products are original equipment parts. Prices subject to change without notice.