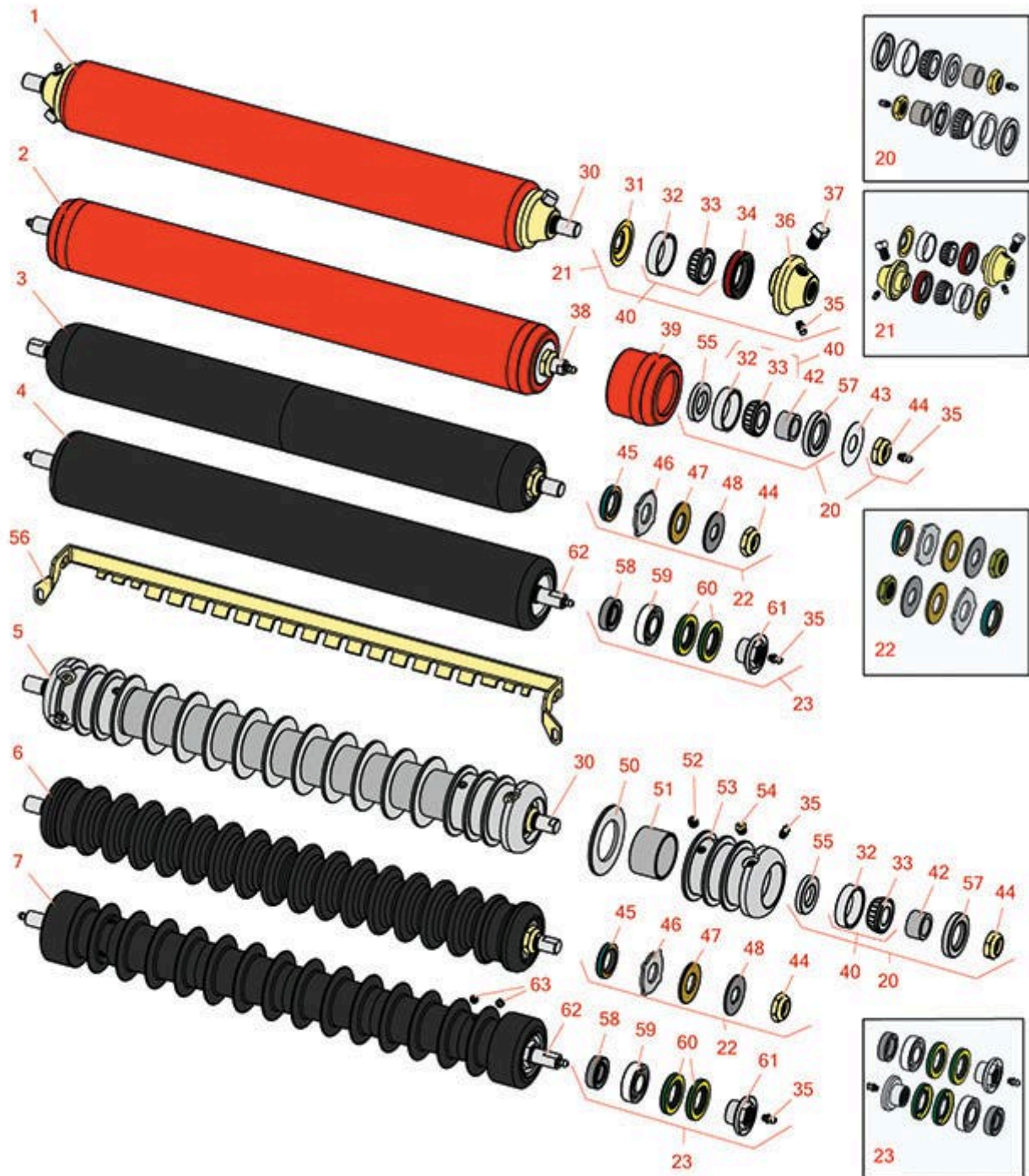




Replaces Jacobsen LF-3400 Parts

5" Reel Units
Front Rollers



All original equipment manufacturers names and part numbers are used for identification purposes only, and we are in no way implying that our products are original equipment parts. Prices subject to change without notice.



Replaces Jacobsen LF-3400 Parts

5" Reel Units
Front Rollers



Item No	R&R Part No.	OEM Part No.	Description	Qty Req	Price Each	Order Quantity
---------	--------------	--------------	-------------	---------	------------	----------------

R&R Front Rollers

1	R700530	132202	Roller - Smooth Tubular Steel	0	200.30	
---	----------------	--------	-------------------------------	---	---------------	--

Tech Note: Constructed with a through shaft, this heavy-duty roller uses greasable tapered bearings for extended life.:

2	R700535		Roller - Smooth Tubular Steel	0	206.20	
---	----------------	--	-------------------------------	---	---------------	--

Tech Note: Constructed with a through shaft, this heavy duty roller uses greasable tapered bearings for extended life.:

3	R1013610		Roller - Smooth UHMW Polyethylene	0	233.35	
---	-----------------	--	-----------------------------------	---	---------------	--

Tech Note: Machined from solid UHMW, this low maintenance roller uses a 1" solid stainless steel shaft and requires no grease. UHMW material prevents build-up of debris.:

4	R1013675		Roller - Fusion Smooth UHMW Polyethylene	0	263.30	
---	-----------------	--	--	---	---------------	--

Tech Note: Machined from solid UHMW plastic that prevents build-up of debris. This roller turns on precision stainless ball bearings.:

5	R100100	123268	Roller - Grooved Repairable Steel	0	301.85	
---	----------------	--------	-----------------------------------	---	---------------	--

Tech Note: Constructed with a through shaft and greasable ball bearings, this roller can be repaired by unscrewing the ends and replacing the series of washers and spacers.:

6	R1013602		Roller - Grooved UHMW Polyethylene	0	249.40	
---	-----------------	--	------------------------------------	---	---------------	--

Tech Note: Machined from solid UHMW, this low maintenance roller rotates around a 1" solid stainless steel shaft and requires no bearings or grease. Patented groove design and smooth UHMW material prevents build-up of debris.:

7	R1013670		Roller - Grooved UHMW Polyethylene	0	293.35	
---	-----------------	--	------------------------------------	---	---------------	--

Tech Note: Machined from solid UHMW plastic that prevents build-up of debris. This roller has a patented deep groove design and turns on precision stainless ball bearings.:

Overhaul Kits

20	R100137		Overhaul Kit - Roller	1	73.55	
----	----------------	--	-----------------------	---	--------------	--

All original equipment manufacturers names and part numbers are used for identification purposes only, and we are in no way implying that our products are original equipment parts. Prices subject to change without notice.



Replaces Jacobsen LF-3400 Parts

5" Reel Units
Front Rollers



Item No	R&R Part No.	OEM Part No.	Description	Qty Req	Price Each	Order Quantity
---------	--------------	--------------	-------------	---------	------------	----------------

Tech Note: Includes 2 ea.: R3296-15 Locknuts, R302-5 Grease Fittings, R253-122 Seals, R253-117 Seals, R5-4038 Wear Sleeves, R254-78 Bearings & R254-79 Bearing Cups:

21	R700505		Conversion Kit - Roller	1	127.40	
----	----------------	--	-------------------------	---	---------------	--

Tech Note: Includes: 2 each: R254-78 Bearing Cones, R254-79 Bearing Cups, R328062 Seals, R412063 Square Head Set Screws, R700501 Roller Ends & R700502 Grease Retainers.:

22	R101399		Overhaul Kit - UHMW 2 Pc Roller	1	41.15	
----	----------------	--	---------------------------------	---	--------------	--

Tech Note: Fits all R&R 2-1/2" - 3-1/2" Dia. Black UHMW Plastic Rollers that do not use ball bearings.. Includes 2 ea.: R1503230 Star Washers, R1503470 Seals, R150333 Thrust Washers, R3296-15 Locknuts, R1503471 Bronze Thrust Washers:

23	R114-5430	114-5430	Overhaul Kit - Roller	1	82.40	
----	------------------	----------	-----------------------	---	--------------	--

Tech Note: Includes 4 ea.: R112-7494 Seals; 2 ea.: R302-5 Grease Zerks, R114-3717 Seals, R112-5290 Bearings & R114-3745 Locknuts:

Other Parts Available

30	R100102	3003416, 366589	Shaft - Roller	1	47.65	
----	----------------	--------------------	----------------	---	--------------	--

31	R700502	700502	Retainer - Grease	2	2.35	
----	----------------	--------	-------------------	---	-------------	--

32	R254-79	254-79, 4121175	Cup - Bearing	2	3.20	
----	----------------	--------------------	---------------	---	-------------	--

Tech Note: Use R254-79M installation mandrel to properly install race.:

33	R254-78	254-78, 385174, 4121174, 4135152	Tapered Bearing Cone	2	6.05	
----	----------------	---	----------------------	---	-------------	--

34	R328062	328062	Seal - Roller	2	4.70	
----	----------------	--------	---------------	---	-------------	--

35	R302-5	302-5, 471214, 471223, 471226	Fitting - Grease	2	0.27	
----	---------------	--	------------------	---	-------------	--

36	R700501	700501	Roller End - Regreasable	2	51.65	
----	----------------	--------	--------------------------	---	--------------	--

All original equipment manufacturers names and part numbers are used for identification purposes only, and we are in no way implying that our products are original equipment parts. Prices subject to change without notice.



Replaces Jacobsen LF-3400 Parts

5" Reel Units

Front Rollers



Item No	R&R Part No.	OEM Part No.	Description	Qty Req	Price Each	Order Quantity
37	R412063	412063	Screw - Sq. HD. Set	2	1.25	
38	R700538	700538	Shaft - Fits R700535	1	47.65	
39	R170308		Roller End - Solid 3	2	50.20	
40	R500534	500534, R500534	Bearing - with Cup	2	11.80	
42	R5-4038	5-4038	Sleeve - Wear Reel Shaft	2	11.30	
43	R150504	150504	Washer	2	2.35	
44	R3296-15	3296-15, 367029, 444742	Locknut - 3/4-16 Nylon Jam	2	2.15	
45	R1503470		Seal - Inner Wiper	2	5.85	
46	R1503230		Washer - Thrust Outer Keyed	2	6.05	
47	R1503471		Washer - Thrust SAE660 Bronze	2	4.20	
48	R150333		Washer - Flat Keyed Outer SS	2	5.15	
50	R150673	150673	Washer - 3 Repairable Roller	11	1.45	
51	R150676	150676	Spacer - 2-3/4 Dia x 1-1/4 L	10	3.75	
52	R150691		Screw - Set Nyloc 3/8-16 x 3/8	4	1.10	
53	R100103		Roller End - Grooved	2	84.45	
54	R170714	170714, 471240, 471242	Fitting - Pressure Relief	2	2.25	
55	R253-122		Seal	2	3.55	
56	R100110	100110, 391202	Scraper - Fits R100100	1	40.40	

Tech Note: Fits R100100 3" Grooved Roller - 1-1/4" Spacing:

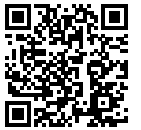
All original equipment manufacturers names and part numbers are used for identification purposes only, and we are in no way implying that our products are original equipment parts. Prices subject to change without notice.



Replaces Jacobsen LF-3400 Parts

5" Reel Units

Front Rollers



Item No	R&R Part No.	OEM Part No.	Description	Qty Req	Price Each	Order Quantity
57	R253-117	253-117, 3004882	Seal - Outer Triple Lip	2	4.20	
58	R114-3717		Seal	2	2.35	
59	R112-5290		Bearing - Stainless	2	10.30	
60	R112-7494		Seal	4	5.15	
61	R114-3745		Locknut - Bearing - Stainless	2	19.15	
62	R1013671		Shaft - Roller	1	53.20	
63	R300106		Screw - Set 5/16-18 x 1/4	4	0.32	

All original equipment manufacturers names and part numbers are used for identification purposes only, and we are in no way implying that our products are original equipment parts. Prices subject to change without notice.