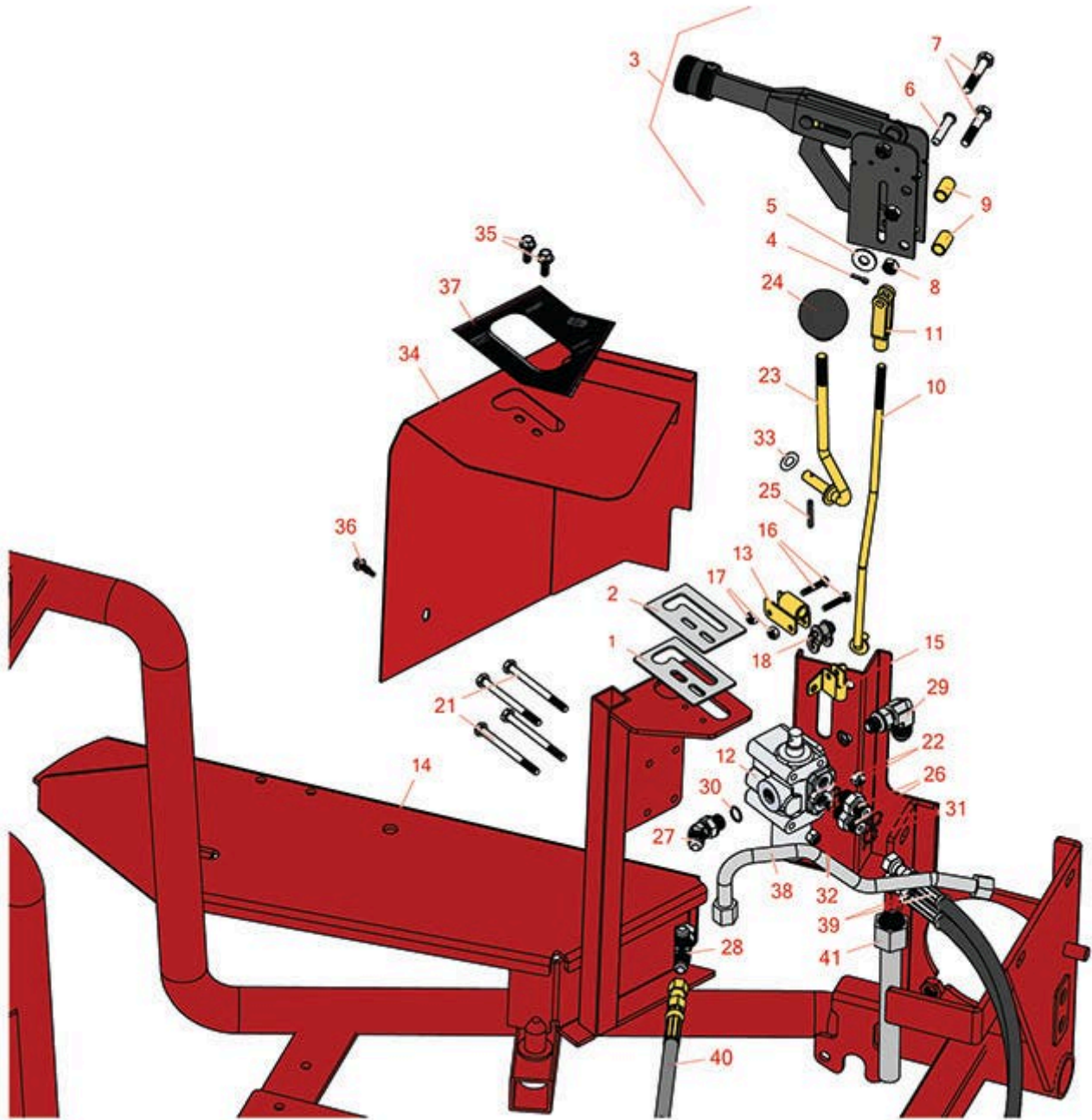




Replaces Toro Sand Pro 2020 Parts

Traction Unit - Model 08884 & 08887

Hand Brake & Hydraulic Valve



All original equipment manufacturers names and part numbers are used for identification purposes only, and we are in no way implying that our products are original equipment parts. Prices subject to change without notice.



Replaces Toro Sand Pro 2020 Parts

Traction Unit - Model 08884 & 08887

Hand Brake & Hydraulic Valve



Item No	R&R Part No.	OEM Part No.	Description	Qty Req	Price Each	Order Quantity
1	R21-8640	21-8640	Latch-Lever, Valve	1	22.20	
2	R95-5833	95-5833	Guide-Lever	1	2.70	
3	R95-0636	95-0636	Lever Assy - Brake	1	89.90	
4	R1023-4	01-151-0150, 1023-4, 19-6220, 214-14, 215-54, 28-9-D, 3272-4, 3272-6, 513567, 932008P	Pin - Cotter 3/32 x 3/4	1	0.23	
5	R453009	01-166-0400, 24-10-BD, 24-9-AD, 32-9650, 3256-2, 3256-23, 3256-3, 3256-67, 3290-217, 3556-3, 4-2390, 7-0152	Washer - Flat 5/16 SAE	1	0.13	
6	R283-14	283-14	Pin - Clevis	1	3.65	
7	R101344	101344, 322-8	Bolt - Hex HD 5/16-18 x 1-3/4	2	1.25	
8	R3296-29	1-804256, 3290-357, 3296-29, 915662P	Locknut - 5/16-18 ESNA	2	2.95	
9	R85-0290	85-0290	Spacer	2	3.60	
10	R95-0628	95-0628	Rod-Brake	1	62.25	
11	R282-2	1-303105, 282-2	Yoke	1	15.15	

All original equipment manufacturers names and part numbers are used for identification purposes only, and we are in no way implying that our products are original equipment parts. Prices subject to change without notice.



Replaces Toro Sand Pro 2020 Parts

Traction Unit - Model 08884 & 08887

Hand Brake & Hydraulic Valve



Item No	R&R Part No.	OEM Part No.	Description	Qty Req	Price Each	Order Quantity
12	R43-1710	21-8550, 43-1710, 43-1710-01, 43-1730	Valve Assy	1	308.80	
13	R92-8983	92-8983	Pivot	1	19.40	
14	R95-0600-01	95-0600, 95-0600-01	Frame - Red	1	1552.95	
15	R88-8480	85-8920, 88-8480	Bracket-Pivot	1	10.75	
16	R3290-360	3290-360	Bolt	2	3.95	
17	R3296-2	32127-10, 3296-2, 9157404	Nut - #10 Lock	2	0.94	
18	R2710-20	2710-20	Link - Offset	1	5.35	
21	R321-23	321-23	Bolt - Hx HD 1/4-20 x 3	4	2.55	
22	R301504	2296-42, 301504, 32127-24, 32128-33, 32146-17, 3296-16, 3296-42, 3296-42 , 915661P	Locknut - ESNA 1/4-20	4	0.18	
23	R92-8981	92-8981, 92-8981-01	Lift Lever	1	42.70	
24	R233-21	233-21	Knob	1	11.75	
25	R32121-73	29-56-D, 32121-7, 32121-73, 95462	Pin - Roll	1	0.19	
26	R340-92	340-92	Hydraulic Fitting - Striaight	2	6.95	

All original equipment manufacturers names and part numbers are used for identification purposes only, and we are in no way implying that our products are original equipment parts. Prices subject to change without notice.



Replaces Toro Sand Pro 2020 Parts

Traction Unit - Model 08884 & 08887

Hand Brake & Hydraulic Valve



Item No	R&R Part No.	OEM Part No.	Description	Qty Req	Price Each	Order Quantity
27	R353-212	30-6430, 353-212, 353-378	Hydraulic Fitting - 45 Deg	1	16.90	
28	R353-877	353-877	Hydraulic Fitting - Tee 6MJ-6FJX-6MJ	1	13.10	
29	R353-511	353-511	Hydraulic Fitting - 90 Deg	1	19.90	
30	R237-42	237-42, 31-4160	O-Ring	2	0.80	
31	R237-22	107-8844, 237-22, 237-78	O-Ring	2	0.62	
32	R237-21	237-21, 327-21	O-Ring	2	0.47	
33	R3290-477	108473, 3290-477	Washer - Spring Wave	1	0.75	
34	R95-0601-01	95-0601-01	Valve Shroud Assy	1	59.05	
35	R3234-33	3234-33	Bolt - 1/4-20 x 3/4 Serr Hex Flanged	2	0.51	
36	R32104-76	32104-63, 32104-65, 32104-74, 32104-76	Bolt - Hx HD #12 x 3/4 S.D.Imp	1	0.59	
37	R95-0647	95-0647	Decal-Control	1	10.10	
38	R95-0575	95-0575	Tube-Valve, Shuttle	1	31.85	
39	R75-6200	75-6200	Hydraulic Hose Assy	2	34.95	
40	R95-0592	95-0592	Hydraulic Hose Assy	1	46.95	
41	R95-0643	95-0643	Tube-Valve to Cool	1	43.30	

All original equipment manufacturers names and part numbers are used for identification purposes only, and we are in no way implying that our products are original equipment parts. Prices subject to change without notice.