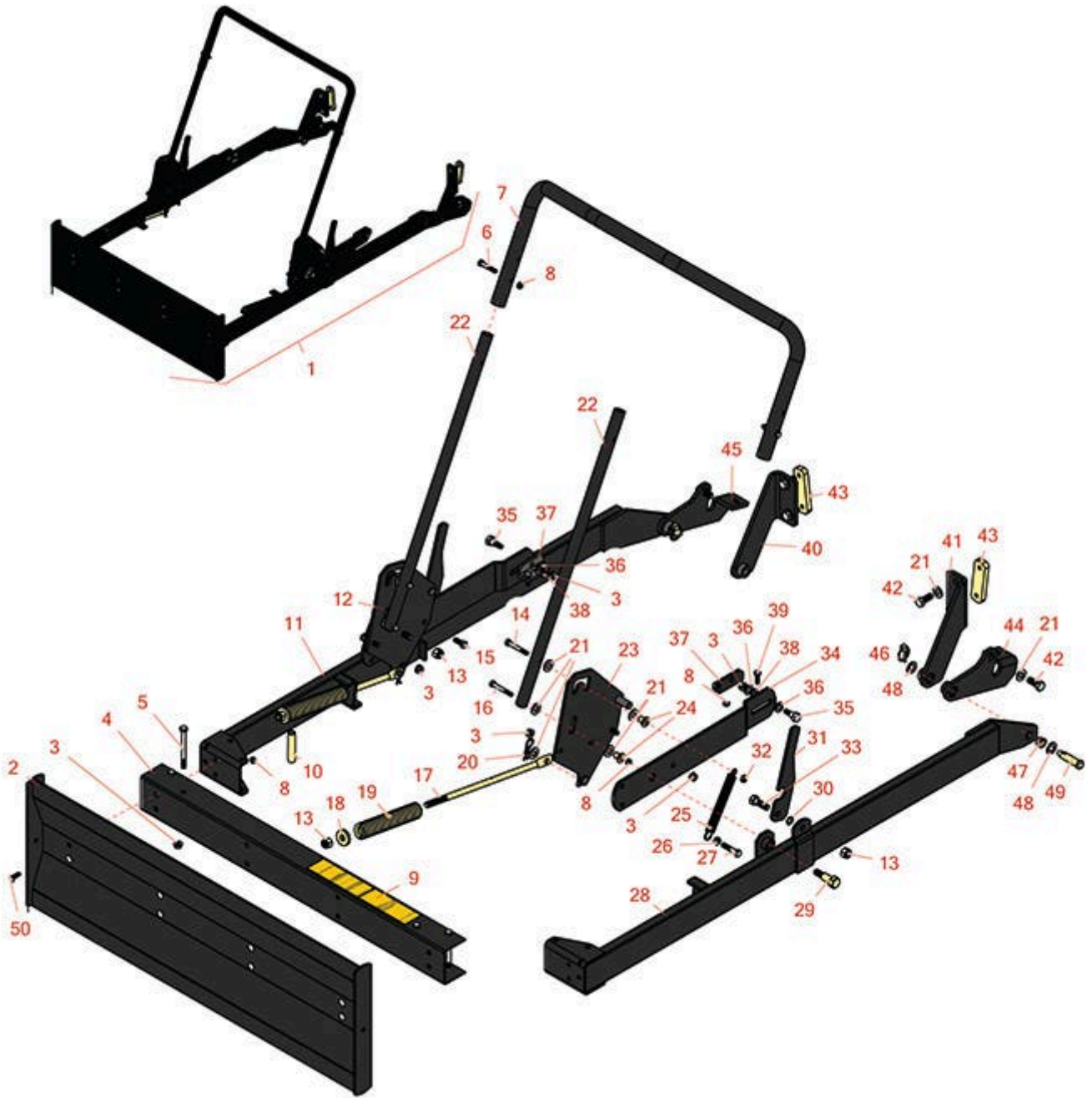




Replaces Toro Sand Pro 2020 Parts

Attachments

Front Dozer Blade - Model 08821



All original equipment manufacturers names and part numbers are used for identification purposes only, and we are in no way implying that our products are original equipment parts. Prices subject to change without notice.



Replaces Toro Sand Pro 2020 Parts

Attachments

Front Dozer Blade - Model 08821



Item No	R&R Part No.	OEM Part No.	Description	Qty Req	Price Each	Order Quantity
---------	--------------	--------------	-------------	---------	------------	----------------

Complete Front Blade Kit

1	R08821		Front Blade Kit	0	1540.15	
---	---------------	--	-----------------	---	----------------	--

Other Parts Available

2	R84-2460-03	80-1190, 84-2460, 84-2460-03	Blade Assy	1	257.55	
3	R3296-39	32127-25, 32128-36, 3290-357, 3296-17, 3296-22, 3296-39, 915663P, 99-7443	Locknut - 3/8-16 Nylon	6	1.40	
4	R16-1019	16-1019, 80-1820	Channel	1	109.95	
5	R323-17	323-17	Bolt - Hex HD 3/8-16 x 4	4	3.25	
6	R19H3130	322-9, 3223-5	Bolt - Hex HD 5/16-18 x 1-3/4	2	0.84	
7	R92-2314	80-1850, 92-2314	Handle	1	103.35	
8	R3296-29	1-804256, 3290-357, 3296-29, 915662P	Locknut - 5/16-18 ESNA	18	2.95	
9	R93-9078	93-9078	Decal-Safety	1	6.75	
10	R80-1890	80-1890	Spacer	4	4.55	
11	R92-2308-03	92-2308, 92-2308-03	RH Arm Assy	1	238.95	
12	R92-2319-03	92-2319, 92-2319-03	RH Plate Assy	1	70.80	

All original equipment manufacturers names and part numbers are used for identification purposes only, and we are in no way implying that our products are original equipment parts. Prices subject to change without notice.



Replaces Toro Sand Pro 2020 Parts

Attachments

Front Dozer Blade - Model 08821



Item No	R&R Part No.	OEM Part No.	Description	Qty Req	Price Each	Order Quantity
13	RF5003	32127-29, 32131-5, 32132-5, 3296-23	Locknut - ESNA 1/2-13	6	0.78	
14	R322-12	01-150-0730, 01-178-0520, 322-12	Bolt - 5/16-18 x 2 1/2 Hx HD	2	2.30	
15	R323-6	01-150-0010, 01-178-0608, 20-47-AD, 20-47-AGD, 3224-2, 323-6, 49-3510, 908034P, 908332	Bolt - Hex HD 3/8-16 x 1 GR5 YZ	2	0.59	
16	R322-11	01-150-0390, 01-178-0518, 20-31-AD, 322-11, 3223-7	Bolt - 5/16-18 x 2 1/4 Hx HD	2	1.05	
17	R80-1460	80-1460	Rod-Spring	2	20.70	
18	R70-8040	70-8040	Washer	2	2.40	
19	R80-1470	80-1470	Spring - Stainless	2	66.55	
20	R3272-12	01-151-0090, 28-19-D, 3272-12	Pin - Cotter 1/8 x 1-1/4	2	0.11	
21	R3256-26	01-166-0540, 01-166-0820, 17-2530, 24-13-BD, 30-8570, 3256-26, 356206, 48-9390	Washer - 1/2 in	14	0.41	
22	R80-1860-03	80-1860, 80-1860-03	Handle Upright Assy	2	57.50	

All original equipment manufacturers names and part numbers are used for identification purposes only, and we are in no way implying that our products are original equipment parts. Prices subject to change without notice.



Replaces Toro Sand Pro 2020 Parts

Attachments

Front Dozer Blade - Model 08821



Item No	R&R Part No.	OEM Part No.	Description	Qty Req	Price Each	Order Quantity
23	R92-2318-03	92-2318, 92-2318-03	LH Plate Assy	1	70.80	
24	R27-6602	27-6602	Spacer-Coupling	4	4.55	
25	R76-4660	76-4660	Spring-Door	2	6.80	
26	R3218-3	01-191-0616, 22-13-AJKD, 3218-3, 915236P	Nut - 3/8-16 Jam	2	0.39	
27	R323-9	01-150-0190, 01-150-1540, 01-178-0614, 107229, 20-50-AD, 20-50-AGD, 30-9430, 32105-4, 3224-5, 323-9, 513363, 513364, 5377, 908037P	Bolt - Hex HD 3/8-16 x 1-3/4	2	0.91	
28	R92-2307-03	92-2307, 92-2307-03	LH Arm Assy	1	238.95	
29	R92-2315	92-2315	Bolt-Shoulder	2	24.65	
30	R3290-450	3290-450	Washer-Belleville	2	4.55	
31	R92-2320	92-2320	Lever-Latch	2	26.35	
32	R443106	01-188-0518, 22-12-AJD, 32111-4, 3217-4, 3217-6, 3218-2, 513295, 513412, 915112P, 915978, 915979	Nut - 5/16-18 Y/Zinc Plated	2	0.19	

All original equipment manufacturers names and part numbers are used for identification purposes only, and we are in no way implying that our products are original equipment parts. Prices subject to change without notice.



Replaces Toro Sand Pro 2020 Parts

Attachments

Front Dozer Blade - Model 08821



Item No	R&R Part No.	OEM Part No.	Description	Qty Req	Price Each	Order Quantity
33	R400408	01-150-0090, 01-178-0812, 20-87-AD, 20-87-AGD, 20-87-AGF, 3226-2, 325-6, 513376, 513378	Bolt - Hex HD 1/2-13 x 1-1/2	2	2.30	
34	R92-2313-03	92-2313, 92-2313-03	Arm-Lift	2	45.40	
35	R80-1300	80-1300	Bolt-Shoulder	2	18.45	
36	R257-5	257-5	Washer - Thrust	4	1.85	
37	R92-2324	92-2324	Bracket-Pivot	2	24.65	
38	R453011	01-166-0100, 01-166-0120, 01-166-0270, 01-166-0500, 01-166-0600, 01-166-0620, 132-4593, 2356-3, 237-12, 24-10-AD, 24-11-AD, 24-11-BD, 24-12-AD, 24-12-BD, 30-9310, 32-8190, 3256-24, 3256-3, 3256-36, 3256-4, 453011, 47-9950, 48-9220, 513458, 7-0052	Washer - Flat 3/8 SAE Y/Zinc	2	0.11	

All original equipment manufacturers names and part numbers are used for identification purposes only, and we are in no way implying that our products are original equipment parts. Prices subject to change without notice.



Replaces Toro Sand Pro 2020 Parts

Attachments

Front Dozer Blade - Model 08821



Item No	R&R Part No.	OEM Part No.	Description	Qty Req	Price Each	Order Quantity
39	R322-5	01-178-0508, 20-26-AD, 20-26-AGD, 30-9000, 322-5, 513341, 519755, 908019P, N/A	Bolt - Hex HD 5/16-18 x 1	4	0.40	
40	R92-2326-03	92-2326, 92-2326-03	RH Bracket Assy	1	72.75	
41	R92-2325-03	92-2325, 92-2325-03	LH Bracket Assy	1	72.75	
42	R325-5	01-150-0250, 01-178-0810, 19-8000, 20-86-AGD, 3226-1, 325-5, 513375	Bolt - Hex HD 1/2-13 x 1-1/4	4	0.83	
43	R80-1210	80-1210	Block-Mounting	2	20.15	
44	R92-2311-03	92-2311, 92-2311-03	LH Bracket Assy	1	63.10	
45	R92-2312-03	92-2312, 92-2312-03	RH Bracket Assy	1	63.10	
46	R3290-495	32-0140, 3290-495	Pin-Klik	2	3.65	
47	R256-317	256-317	Bushing	2	11.55	
48	R257-11	257-11	Washer - Thrust Hardened	4	3.85	
49	R92-2323	80-1840, 92-2323	Pin	2	13.50	

All original equipment manufacturers names and part numbers are used for identification purposes only, and we are in no way implying that our products are original equipment parts. Prices subject to change without notice.



Replaces Toro Sand Pro 2020 Parts



Attachments

Front Dozer Blade - Model 08821

Item No	R&R Part No.	OEM Part No.	Description	Qty Req	Price Each	Order Quantity
50	R3230-2	01-173-0508, 25-25-AGD, 3230-16, 3230-2, 513624, 513633, 513635, 900038P	Bolt - Carriage	8	1.05	

All original equipment manufacturers names and part numbers are used for identification purposes only, and we are in no way implying that our products are original equipment parts. Prices subject to change without notice.