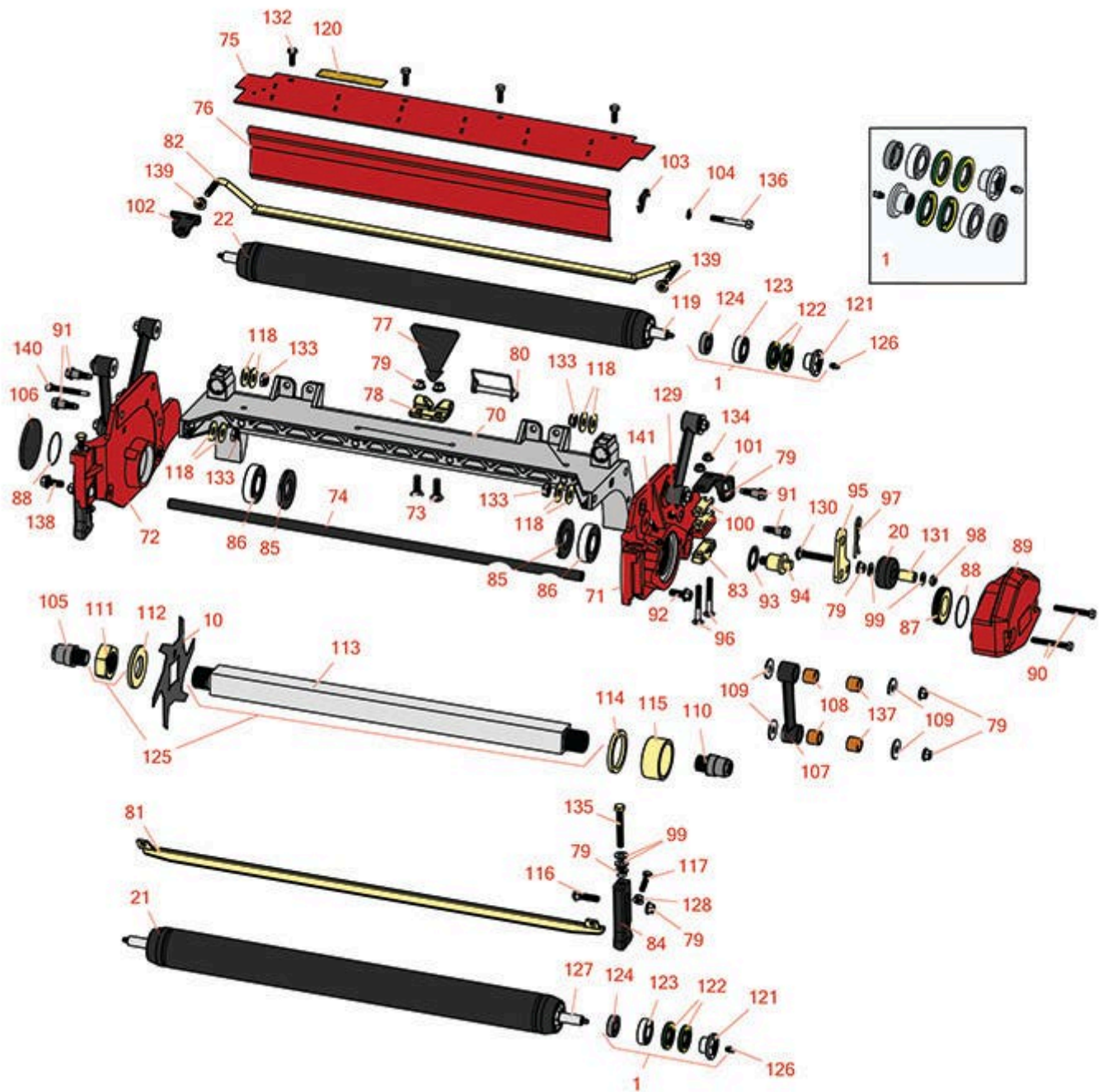




Replaces Toro Reelmaster 7000-D Parts

27in DPA Verti-Cut Unit - Model 03184

Verti-Cut Reel & Frame



All original equipment manufacturers names and part numbers are used for identification purposes only, and we are in no way implying that our products are original equipment parts. Prices subject to change without notice.



Replaces Toro Reelmaster 7000-D Parts

27in DPA Verti-Cut Unit - Model 03184

Verti-Cut Reel & Frame



Item No	R&R Part No.	OEM Part No.	Description	Qty Req	Price Each	Order Quantity
---------	--------------	--------------	-------------	---------	------------	----------------

Overhaul Kits

1	R114-5430	114-5430	Overhaul Kit - Roller	0	82.40	
---	------------------	----------	-----------------------	---	--------------	--

Tech Note: Includes 4 ea.: R112-7494 Seals; 2 ea.: R302-5 Grease Zerks, R114-3717 Seals, R112-5290 Bearings & R114-3745 Locknuts:

Verti-Cut Blades

10	R93-3038-03	93-3038, 93-3038-03	Blade - Vertical Mower 1/16x7.25	19	4.20	
----	--------------------	------------------------	-------------------------------------	----	-------------	--

10	R106-8625	106-8625	Blade - Carbide Tip	19	18.30	
----	------------------	----------	---------------------	----	--------------	--

R&R Rollers

20	R108-4293	108-4293	Roller - Verti-Cut	2	9.95	
----	------------------	----------	--------------------	---	-------------	--

21	R117-3759	117-3759, 137-6124	Roller Assy - 27" Front Solid 2 1/2	1	380.45	
----	------------------	-----------------------	--	---	---------------	--

22	R117-3756	117-3756, 137-6123	Roller Assy - 27" Rear Solid 2 1/2	1	358.85	
----	------------------	-----------------------	---------------------------------------	---	---------------	--

Other Parts Available

70	R112-8935	112-8935	Frame - Center - 27 in Unit	1	377.65	
----	------------------	----------	-----------------------------	---	---------------	--

71	R117-3764	117-3764	Plate-Side - LH - Verticut	1	246.35	
----	------------------	----------	----------------------------	---	---------------	--

72	R117-3763	117-3763	Plat E- Side - RH - Verticut	1	246.35	
----	------------------	----------	------------------------------	---	---------------	--

73	R3231-25	01-173-0610, 30-9970, 3231-25, 3231-3, 900064P	Bolt - Carriage 3/8-16 x 1-1/4	2	0.66	
----	-----------------	--	--------------------------------	---	-------------	--

74	R112-8936	112-8936	Tube- Support - 27 in Units	1	33.20	
----	------------------	----------	-----------------------------	---	--------------	--

75	R112-8942	112-8942	Front Grass Shield Assy - 27 in Units	1	28.20	
----	------------------	----------	--	---	--------------	--

All original equipment manufacturers names and part numbers are used for identification purposes only, and we are in no way implying that our products are original equipment parts. Prices subject to change without notice.



Replaces Toro Reelmaster 7000-D Parts

27in DPA Verti-Cut Unit - Model 03184

Verti-Cut Reel & Frame



Item No	R&R Part No.	OEM Part No.	Description	Qty Req	Price Each	Order Quantity
76	R112-8944-01	112-8944-01	Rear Grass Shield Assy - 27 in Units	1	45.25	
77	R110-4088-03	110-4088-03, 119-8010-03	Kickstand	1	21.25	
78	R110-4058	110-4058	Bracket - Chain	1	19.40	
79	R104-8301	104-8301, 104-9301, 109-6658, 133-7570	Locknut - 3/8-16 Nylon Flanged	16	0.84	
80	R107-7400	107-7400	Pin - Lynch	1	6.95	
81	R117-3753-03	117-3753-03	Scraper-Full Front Roller 2 1/2 in	1	50.50	
82	R117-0993	117-0993	Scraper Rod Assy - 27 in	1	93.65	
83	R106-3924	106-3924	Bracket - Rear Roller	1	15.70	
84	R107-2952	107-2952	Bracket - Front Roller	1	31.55	
85	R107-4028	105-6757, 107-4028	Seal - Grease	2	16.05	
86	R93-2489	93-2489	Bearing - Reel	2	21.20	
87	R107-2954	107-2954	Nut - Bearing Adjuster	1	11.50	
88	R112-6967	112-6967	O-Ring	2	1.95	
89	R119-0614-01	119-0614-01	Weight	1	76.40	

All original equipment manufacturers names and part numbers are used for identification purposes only, and we are in no way implying that our products are original equipment parts. Prices subject to change without notice.



Replaces Toro Reelmaster 7000-D Parts

27in DPA Verti-Cut Unit - Model 03184

Verti-Cut Reel & Frame



Item No	R&R Part No.	OEM Part No.	Description	Qty Req	Price Each	Order Quantity
90	R101526	01-150-0970, 01-178-0620, 101526, 20-53-AGD, 321-11, 3224-8, 323-11, 323-12, 323-31, 323-4, 323-47	Bolt - Hex HD 3/8-16 x 2-1/2 GR5	2	0.91	
91	R107-2979	107-2979	Bolt - Shoulder	6	3.25	
92	R3234-11	3234-11	Bolt - Hex Washer HD	2	1.05	
93	R3254-21	3254-21	Washer - 1 in Internal Star	2	2.15	
94	R108-4289	108-4289	Pin - Roller Mounting	2	35.55	
95	R108-4286	108-4286	Bracket - Adj	2	9.80	
96	R3230-7	25-33-AGD, 3230-9	Bolt - Carriage 5/16-18 x 2 1/2	4	0.44	
97	R3290-355	01-159-0050, 3290-355, 58-5370	Pin - Bridge - Snap	2	2.35	
98	R3296-59	3296-59	Locknut - 3/8-16 Nylon Jam	2	0.65	

All original equipment manufacturers names and part numbers are used for identification purposes only, and we are in no way implying that our products are original equipment parts. Prices subject to change without notice.



Replaces Toro Reelmaster 7000-D Parts

27in DPA Verti-Cut Unit - Model 03184

Verti-Cut Reel & Frame



Item No	R&R Part No.	OEM Part No.	Description	Qty Req	Price Each	Order Quantity
99	R453011	01-166-0100, 01-166-0120, 01-166-0270, 01-166-0500, 01-166-0600, 01-166-0620, 132-4593, 2356-3, 237-12, 24-10-AD, 24-11-AD, 24-11-BD, 24-12-AD, 24-12-BD, 30-9310, 32-8190, 3256-24, 3256-3, 3256-36, 3256-4, 453011, 47-9950, 48-9220, 513458, 7-0052	Washer - Flat 3/8 SAE Y/Zinc	8	0.11	
100	R119-0626	119-0626	Shim - Roller - 1/4 in - Slotted	4	5.45	
101	R107-3279	107-3279	Bracket - Scraper - LH	1	16.40	
102	R107-3281	107-3281	Bracket - Scraper - RH	1	16.40	
103	R108-4961	108-4961	Tab - Stop - Shield	1	26.35	
104	R3256-74	3256-74	Washer - Flat	1	0.65	
105	R108-4978	108-4978, 131-0516	Insert - RH - Verti-Cut Shaft	1	77.40	
106	R94-2703	94-2703	Plug - Plastic Spindle Housing	1	2.05	
107	R16-9759	16-9759	Link Assy	4	44.50	
108	R93-6981	93-6981	Spacer	8	4.60	

All original equipment manufacturers names and part numbers are used for identification purposes only, and we are in no way implying that our products are original equipment parts. Prices subject to change without notice.



Replaces Toro Reelmaster 7000-D Parts

27in DPA Verti-Cut Unit - Model 03184

Verti-Cut Reel & Frame



Item No	R&R Part No.	OEM Part No.	Description	Qty Req	Price Each	Order Quantity
109	R93-8806	93-8806	Washer-Hardened	16	1.45	
110	R108-4977	108-4977, 131-0515	Insert - LH - Verti-Cut Shaft	1	77.40	
111	R3220-25	3220-25	Nut - Jam 1-3/8-12	1	22.15	
112	R105-0173	105-0173	Washer - Verticut Shaft 1/4 in	1	12.65	
113	R117-3760	117-3760	Shaft Only - V-Cut	1	261.40	
114	R105-0177	105-0177	Spacer - Verticut Shaft 1/4 in	1	5.40	
115	R105-0172	105-0172	Spacer - Verticut Shaft 1.2 in	18	11.25	
116	R3231-4	01-157-0440, 01-173-0612, 3231-4	Bolt - Carriage 3/8-16 x 1-1/2	2	1.20	
117	R322-16	322-16, Apr-00	Bolt - Hex HD 5/16-18 x 1-1/8	2	1.65	
118	R453013	01-166-0140, 01-166-0700, 3256-5, 80-4850	Washer - Flat 7/16	8	0.26	
119	R112-8918	112-8918	Shaft - Long - Rear Roller - 27" Units	1	63.95	
120	R93-6688	93-6688	Decal - Warning	1	2.30	
121	R114-3745	114-3745, 114-5411	Locknut - Bearing - Stainless	2	19.15	
122	R112-7494	112-7494	Seal	4	5.15	
123	R112-5290	112-5290, 251--346, 251-346, 72-5430	Bearing - Stainless	2	10.30	
124	R114-3717	114-3717	Seal	2	2.35	

All original equipment manufacturers names and part numbers are used for identification purposes only, and we are in no way implying that our products are original equipment parts. Prices subject to change without notice.



Replaces Toro Reelmaster 7000-D Parts

27in DPA Verti-Cut Unit - Model 03184

Verti-Cut Reel & Frame



Item No	R&R Part No.	OEM Part No.	Description	Qty Req	Price Each	Order Quantity
125	R119-0625	119-0625	Shaft Assy - V-Cut	1	298.50	
126	R302-5	21-6010, 302-11, 302-37, 302-47, 302-5, 302-57, 302-58, 302-6, 31-0300, 32-9660, 60-0800, 62-3880, 92-4181	Fitting - Grease	2	0.27	
127	R117-0957	117-0957	Shaft - Front Roller - 27" Units	1	61.20	
128	R445722	30-8980, 32128-2, 32128-20, 32128-20, 445722	Nut - Serrated Washer	2	0.66	
129	R170714	302-34, 302-39, 62-3520	Fitting - Pressure Relief	2	2.25	
130	R3231-7	3231-33, 3231-7	Bolt - Carriage 3/8-16 x 2-1/4	2	3.85	
131	R59-2580	59-2580	Spacer - Wheel	2	5.30	
132	R3234-7	3234-7	Bolt - Hex Washer HD 5/16-18 x 5/8	4	1.30	
133	R3296-28	119-4154, 140-9234, 32127-34, 32128-7, 32128-8, 32136-7, 3296-28	Nut - 1/2-20 ESNA Jam	4	1.25	

All original equipment manufacturers names and part numbers are used for identification purposes only, and we are in no way implying that our products are original equipment parts. Prices subject to change without notice.



Replaces Toro Reelmaster 7000-D Parts

27in DPA Verti-Cut Unit - Model 03184

Verti-Cut Reel & Frame



Item No	R&R Part No.	OEM Part No.	Description	Qty Req	Price Each	Order Quantity
134	R104-8300	104-8300, 104-8300 , 119-4041	Locknut - 5/16-18 Flanged Y/Zinc	4	0.47	
135	R112-7451	100-9429, 112-7451	Bolt - Hex Tap 3/8-16 x 2-3/4	2	1.95	
136	R322-14	01-150-0830, 01-178-0524, 30-8900, 322-14	Bolt - Hex HD 5/16-18 x 3 GR5	1	2.15	
137	R94-8945	94-8945	Bushing - Bronze - Link Bar	8	2.55	
138	R323-6	01-150-0010, 01-178-0608, 20-47-AD, 20-47-AGD, 3224-2, 323-6, 49-3510, 908034P, 908332	Bolt - Hex HD 3/8-16 x 1 GR5 YZ	2	0.59	
139	R32128-43	30-8990, 32128-43, 3290-357	Nut - Flanged Whiz - 3/8-16	2	0.62	
140	R107-7773	107-7773	Bolt - Soc HD Cap 5/16-18 x 2-1/2	1	7.50	
141	R107-7447	107-7447	Set Screw - 1/4 x 1-1/4 Sq HD	2	0.81	

All original equipment manufacturers names and part numbers are used for identification purposes only, and we are in no way implying that our products are original equipment parts. Prices subject to change without notice.