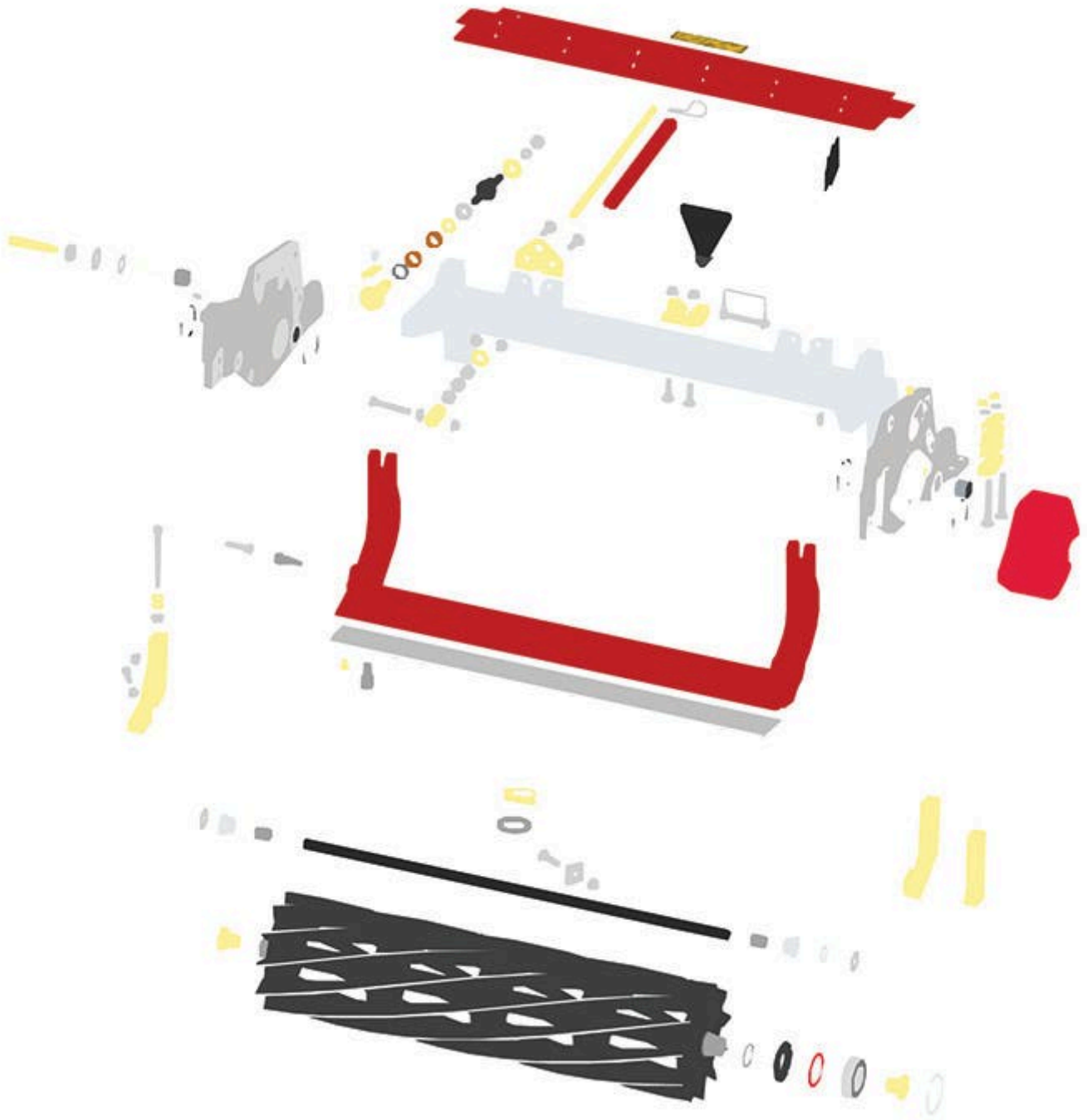




Replaces Toro Reelmaster 7000-D Parts

27in DPA Cutting Unit - Models 03721 & 03722

Reel & Bedknife



All original equipment manufacturers names and part numbers are used for identification purposes only, and we are in no way implying that our products are original equipment parts. Prices subject to change without notice.



Replaces Toro Reelmaster 7000-D Parts

27in DPA Cutting Unit - Models 03721 & 03722
Reel & Bedknife



Item No	R&R Part No.	OEM Part No.	Description	Qty Req	Price Each	Order Quantity
R&R Reels Lifetime Guaranteed						
1	R137-8469	137-8469	Reel - 5 Blade Razor Series Radial Low Drag w/Bearings and Seals 27x7	0	427.25	
1	R133-0184	133-0184	Reel - 8 Blade Razor Series Radial 27x7	0	411.75	
1	R137-8470	137-8470	Reel - 8 Blade Razor Series Radial w/Bearings and Seals 27x7	0	458.45	
1	R133-8278	133-8278	Reel - 11 Blade Razor Series Radial 27x7	0	437.05	
1	R137-8471	137-8471	Reel - 11 Blade Razor Series Radial w/Bearings and Seals 27x7	0	475.30	
1	R133-0193	133-0193	Reel - 5 Blade Razor Series Radial 32x7	0	524.90	
1	R137-8482	137-8482	Reel - 5 Blade Razor Series Radial w/Bearings and Seals 32x7	0	572.95	
1	R133-0195	133-0195	Reel - 8 Blade Razor Series Radial Low Drag w/Bearings and Seals 32x7	0	548.85	
1	R137-8483	137-8483	Reel - 8 Blade Razor Series Radial w/Bearings and Seals 32x7	0	601.35	
R&R Bedknife, Lifetime Guaranteed						
2	R114-9388	114-9388	Bedknife - 27 in Unit - Standard	1	50.50	
2	R114-9390	114-9390	Bedknife - 27 in Unit - Heavy Duty	1	50.55	
2	R114-9389	114-9389	Bedknife - 32 in Unit - Standard	1	62.60	
2	R114-9391	114-9391	Bedknife - 32 in Unit - Heavy Duty	1	62.80	
R&R Razor Tool Steel Bedknives, Lifetime Guaranteed						
2	R112-8910	112-8910	Bedknife - Razor Tool Steel - 27 High Cut	1	108.50	
2	R112-8956	112-8956	Bedknife - Razor Tool Steel - 32 x 3/8 Fairway	1	121.55	

Overhaul Kits

All original equipment manufacturers names and part numbers are used for identification purposes only, and we are in no way implying that our products are original equipment parts. Prices subject to change without notice.



Replaces Toro Reelmaster 7000-D Parts

27in DPA Cutting Unit - Models 03721 & 03722

Reel & Bedknife



Item No	R&R Part No.	OEM Part No.	Description	Qty Req	Price Each	Order Quantity
5	R120-7230	120-7230	Overhaul Kit - Fits DPA Units	0	180.50	
<i>Tech Note: Incl 2 ea.: R108-0015, R115-7039, R119-4155, R120-5116, R120-5118, R120-5120, R3296-33, R3296-48 & 4 ea: R106-5344:</i>						
6	R51-0880	51-0880	Bedknife Screw Driver Tool	0	35.65	
Other Parts Available						
16	R112-8935	112-8935	Frame - Center - 27 in Unit	1	377.65	
17	R112-8908-01	112-8908-01	Bedbar - 27 in - Fits OEM Units Only	1	313.20	
18	R170714	302-34, 302-39, 62-3520	Fitting - Pressure Relief	2	2.25	
19	R119-4155	119-4155	Washer - Hardened	2	7.50	
20	R106-5344	106-5344	Bushing - Flanged and Keyed	4	5.05	
21	R120-5116	120-5116	Washer - Wave	2	6.90	
22	R120-5118	120-5118	Shaft - Adjuster	2	31.05	
<i>Tech Note: 2012 & Newer:</i>						
23	R99-2097	99-2097	Detent - Bed Bar Adjuster	2	8.75	
24	R3296-48	119-4039, 32146-7, 3296-34, 3296-48	Locknut - 7/16-14 ESNA	2	0.55	
25	R120-5120	120-5120	Spring - Compression	2	2.35	
26	R114-9396	114-9396, 119-4067	Bolt - Hex HD 5/16-18 x 3/8	2	1.45	
27	R110-1706	110-1706	Deflector	6	3.40	
<i>Tech Note: 7 for 32 in Units:</i>						
28	R108-4269-01	108-4269-01	Weight	1	82.65	

All original equipment manufacturers names and part numbers are used for identification purposes only, and we are in no way implying that our products are original equipment parts. Prices subject to change without notice.



Replaces Toro Reelmaster 7000-D Parts

27in DPA Cutting Unit - Models 03721 & 03722
Reel & Bedknife



Item No	R&R Part No.	OEM Part No.	Description	Qty Req	Price Each	Order Quantity
29	R112-8942	112-8942	Front Grass Shield Assy - 27 in Units	1	28.20	
30	R115-7039	115-7039	Screw - Adjuster - Bedbar	2	29.85	
<i>Tech Note: 2012 & Newer:</i>						
31	R3296-33	3296-33	Locknut - 5/8-18 ESNA Jam	2	1.30	
<i>Tech Note: 2012 & Newer:</i>						
32	R3245-35	3245-35	Screw - Set 1/4-28 x 1/4	2	0.57	
33	R110-4069	110-4069	Bracket	1	7.05	
34	R3231-25	01-173-0610, 30-9970, 3231-25, 3231-3, 900064P	Bolt - Carriage 3/8-16 x 1-1/4	4	0.66	
35	R104-8301	104-8301, 104-9301, 109-6658, 133-7570	Locknut - 3/8-16 Nylon Flanged	7	0.84	
36	R87-7270-01	87-7270, 87-7270-01	Washer - Flat 1/2	1	0.29	
37	R99-8662	99-8662	Tube - Spring	1	11.55	
38	R104-3396	104-3396	Bolt - Hex HD 3/8-16 x 2-1/4	1	1.55	
39	R110-4058	110-4058	Bracket - Chain	1	19.40	
40	R92-2601	92-2601	Snap Ring	2	2.45	
41	R127-4284	127-4284	Washer - Special	2	3.85	
42	R115-3299	115-3299	Seal- Flocked	2	11.40	
43	R115-3296	115-3296	Bearing	2	23.50	
44	R112-6967	112-6967	O-Ring	2	1.95	

All original equipment manufacturers names and part numbers are used for identification purposes only, and we are in no way implying that our products are original equipment parts. Prices subject to change without notice.



Replaces Toro Reelmaster 7000-D Parts

27in DPA Cutting Unit - Models 03721 & 03722

Reel & Bedknife



Item No	R&R Part No.	OEM Part No.	Description	Qty Req	Price Each	Order Quantity
45	R302-5	21-6010, 302-11, 302-37, 302-47, 302-5, 302-57, 302-58, 302-6, 31-0300, 32-9660, 60-0800, 62-3880, 92-4181	Fitting - Grease	2	0.27	
46	R105-5700	105-5700, 115-5258	Wave Washer - Bearing	1	2.55	
47	R107-4026	107-4026	Bolt - Hex Tap 3/8-16 x 3-3/4	2	6.25	
48	R3231-4	01-157-0440, 01-173-0612, 3231-4	Bolt - Carriage 3/8-16 x 1-1/2	2	1.20	
49	R3289-17	3289-17	Screw - 3/8-16 x 1 1/2 Fl Soc HD	2	2.85	
50	R117-8177	117-8177	O-Ring	2	2.45	
51	R443818	01-191-0813, 3218-18, 3218-5, 3248-18	Nut - 1/2-13 Hex Jam Zinc	2	0.35	
53	R322-16	322-16, Apr-00	Bolt - Hex HD 5/16-18 x 1-1/8	2	1.65	
54	R92-2762	92-2762	Pin - Snap	1	1.50	
55	R108-0015	108-0015	Washer - Flat	2	1.20	
56	R56-9520	56-9520	Bushing - Nyliner	2	1.55	
57	R61-1950	61-1950	Washer - Nylon - Bed Bar	2	0.64	
58	R283-71	283-71	Pin - Lynch Heavy Duty	1	2.45	

All original equipment manufacturers names and part numbers are used for identification purposes only, and we are in no way implying that our products are original equipment parts. Prices subject to change without notice.



Replaces Toro Reelmaster 7000-D Parts

27in DPA Cutting Unit - Models 03721 & 03722

Reel & Bedknife



Item No	R&R Part No.	OEM Part No.	Description	Qty Req	Price Each	Order Quantity
59	R453017	01-166-0050, 01-166-0240, 01-166-0800, 24-13-AD, 24-14-AD, 32-8110, 3256-26, 3256-6, 453017, 69-8980, 87-7270	Washer - Flat 1/2	2	0.28	
60	R94-8946	94-1427, 94-8946	Washer - Thrust	1	3.15	
61	R453011	01-166-0100, 01-166-0120, 01-166-0270, 01-166-0500, 01-166-0600, 01-166-0620, 132-4593, 2356-3, 237-12, 24-10-AD, 24-11-AD, 24-11-BD, 24-12-AD, 24-12-BD, 30-9310, 32-8190, 3256-24, 3256-3, 3256-36, 3256-4, 453011, 47-9950, 48-9220, 513458, 7-0052	Washer - Flat 3/8 SAE Y/Zinc	4	0.11	
62	R127-7111	127-7111	Insert-Threaded - 7 in Reel (LH)	1	25.40	
63	R127-7109	127-7109	Insert-Threaded - 7 in Reel (RH)	1	25.40	
64	R120-0404	120-0404	Bracket- High HOC - LH	1	53.80	

All original equipment manufacturers names and part numbers are used for identification purposes only, and we are in no way implying that our products are original equipment parts. Prices subject to change without notice.



Replaces Toro Reelmaster 7000-D Parts

27in DPA Cutting Unit - Models 03721 & 03722
Reel & Bedknife



Item No	R&R Part No.	OEM Part No.	Description	Qty Req	Price Each	Order Quantity
<i>Tech Note: Fits 2011 & Newer:</i>						
65	R120-0405	120-0405	Bracket - High HOC - RH	1	53.80	
<i>Tech Note: Fits 2011 & Newer:</i>						
66	R117-3752	117-3752	Tube- Support - 27 in Units	1	51.65	
67	R125-2796	125-2796	Bracket- Front HOC	2	36.60	
<i>Tech Note: Fits 2013 & Newer:</i>						
68	R137-5963	137-5963, 137-5967	Side Plate Assy - 7 in LH Aluminum	1	211.60	
69	R137-5967	137-5967	Side Plate Assy - 7 in RH Aluminum	1	211.60	
70	R119-1603	119-1603	Spacer - Pivot	2	13.60	
71	R119-4275	119-4275	Spring - Compression	0	35.15	
72	R130-8094	130-8094	Washer	2	4.70	
73	R106-9623	106-9623	Bolt - Bedbar	2	14.15	
74	R106-9618	106-9618	Bushing - Rubber	2	7.90	
75	R119-4151	119-4151	Screw - Bedknife 5/16-18 x 17/32	10	0.29	
76	R115-2007	107-7437, 115-2007	Rod - Spring	1	20.45	
77	R32128-43	30-8990, 32128-43, 3290-357	Nut - Flanged Whiz - 3/8-16	7	0.62	
78	R108-4279	108-4279	Spacer - Frame	2	6.75	
79	R93-2877	93-2877	Bushing - Flanged	2	3.65	
80	R67-9410	67-9410	Washer - Clevis Pin	2	1.55	
81	R107-2979	107-2979	Bolt - Shoulder	6	3.25	

All original equipment manufacturers names and part numbers are used for identification purposes only, and we are in no way implying that our products are original equipment parts. Prices subject to change without notice.



Replaces Toro Reelmaster 7000-D Parts

27in DPA Cutting Unit - Models 03721 & 03722

Reel & Bedknife



Item No	R&R Part No.	OEM Part No.	Description	Qty Req	Price Each	Order Quantity
82	R3230-26	3230-26	Screw - Carriage 5/16-18 x 3	4	3.40	
82	R3230-30	3230-30	Bolt - Carriage 5/16x4 1/2	4	6.30	
83	R106-3924	106-3924	Bracket - Rear Roller	2	15.70	
84	R104-8300	104-8300, 104-8300, 119-4041	Locknut - 5/16-18 Flanged Y/Zinc	4	0.47	
85	R94-6936	94-6936, 94-9236	Washer - Hardened - 5/16 SAE	4	0.57	
86	R119-0626	119-0626	Shim - Roller - 1/4 in - Slotted	12	5.45	
87	R107-7400	107-7400	Pin - Lynch	1	6.95	
88	R93-6688	93-6688	Decal - Warning	1	2.30	
89	R110-4088-03	110-4088-03, 119-8010-03	Kickstand	1	21.25	

All original equipment manufacturers names and part numbers are used for identification purposes only, and we are in no way implying that our products are original equipment parts. Prices subject to change without notice.