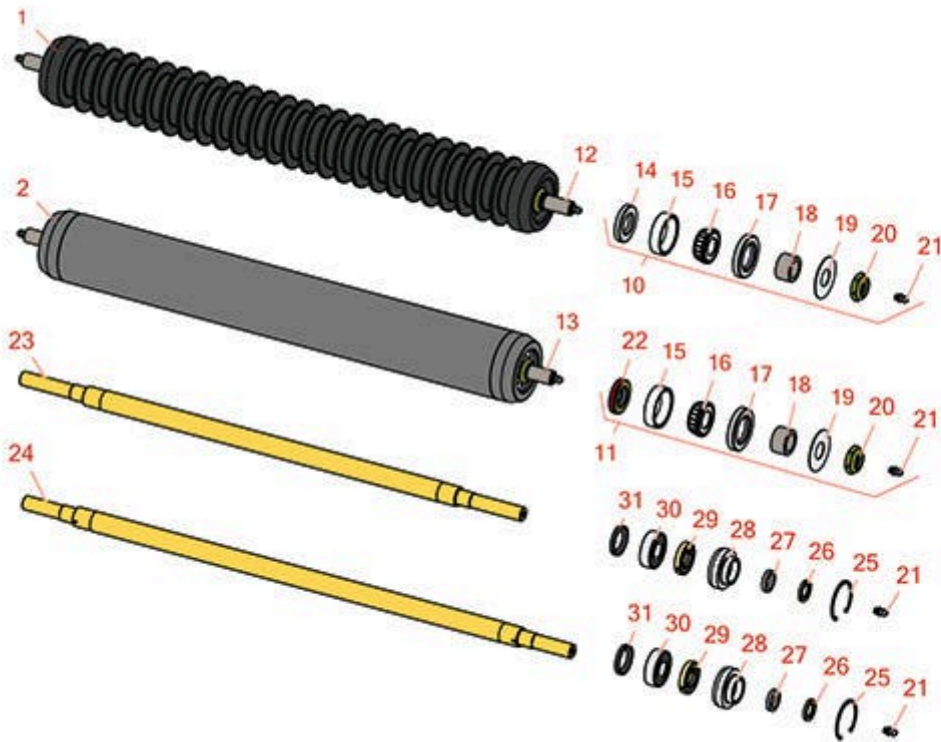




Replaces Toro Reelmaster 6700D Parts

Cutting Unit - Models 03857, 03858 & 03859
Rollers



All original equipment manufacturers names and part numbers are used for identification purposes only, and we are in no way implying that our products are original equipment parts. Prices subject to change without notice.



Replaces Toro Reelmaster 6700D Parts

Cutting Unit - Models 03857, 03858 & 03859
Rollers



Item No	R&R Part No.	OEM Part No.	Description	Qty Req	Price Each	Order Quantity
---------	--------------	--------------	-------------	---------	------------	----------------

R&R Rollers

1	R150700	93-2884, 94-4330, 94-4336, 99-8686	Roller - Grooved Cast Steel	0	346.25	
---	----------------	---	-----------------------------	---	---------------	--

Tech Note: Constructed with cast steel body and a through shaft. This heavy duty roller uses tapered roller bearings for extended life. Shaft length measures 26-1/2".:

2	R150725	99-5720	Roller - Smooth Tubular Steel	0	214.95	
---	----------------	---------	-------------------------------	---	---------------	--

Tech Note: Constructed with a through shaft, this heavy duty roller uses greasable tapered bearings for extended life. Shaft length measures 25-1/2" and body length measures 23".:

Overhaul Kits

10	R100141		Overhaul Kit - Roller	1	74.70	
----	----------------	--	-----------------------	---	--------------	--

Tech Note: Includes 2 ea: R253-117 Seals, R253-152 Seals, R254-78 Bearings, R254-79 Cups, R302-5 Grease Fittings, R3296-15 Locknuts, R5-4038 Wear Sleeves, R150504 Washers:

11	R100137		Overhaul Kit - Roller	1	73.55	
----	----------------	--	-----------------------	---	--------------	--

Tech Note: Includes 2 ea.: R3296-15 Locknuts, R302-5 Grease Fittings, R253-122 Seals, R253-117 Seals, R5-4038 Wear Sleeves, R254-78 Bearings & R254-79 Bearing Cups:

Other Parts Available

12	R150702		Shaft - Roller	1	55.30	
----	----------------	--	----------------	---	--------------	--

13	R150732		Shaft - 25.5 Fits R150725 Only	1	51.35	
----	----------------	--	--------------------------------	---	--------------	--

14	R253-122	253-122, 30-0640	Seal	2	3.55	
----	-----------------	---------------------	------	---	-------------	--

15	R254-79	01-103-0060, 01-103-0130, 1-633584, 252-106, 254-79, 32-7800, 32-9590	Cup - Bearing	2	3.20	
----	----------------	---	---------------	---	-------------	--

All original equipment manufacturers names and part numbers are used for identification purposes only, and we are in no way implying that our products are original equipment parts. Prices subject to change without notice.



Replaces Toro Reelmaster 6700D Parts

Cutting Unit - Models 03857, 03858 & 03859
Rollers



Item No	R&R Part No.	OEM Part No.	Description	Qty Req	Price Each	Order Quantity
<i>Tech Note: Use R254-79M installation mandrel to properly install race.:</i>						
16	R254-78	01-102-0060, 01-102-0130, 1-633585, 254-78, 32-7790, 32-9580, 93-4813	Tapered Bearing Cone	2	6.05	
17	R253-117	253-117, 253-165	Seal - Outer Triple Lip	2	4.20	
18	R5-4038	5-4038, 51-2420	Sleeve - Wear Reel Shaft	2	11.30	
19	R150504	66-5620	Washer	2	2.35	
20	R3296-15	116-7306, 32118-5, 32127-23, 32127-47, 3296-15	Locknut - 3/4-16 Nylon Jam	2	2.15	
21	R302-5	21-6010, 302-11, 302-37, 302-47, 302-5, 302-57, 302-58, 302-6, 31-0300, 32-9660, 60-0800, 62-3880, 92-4181	Fitting - Grease	2	0.27	
22	R253-152	253-116, 253-152	Seal - Inner Roller	2	3.55	
23	R94-4328	94-4328	Shaft - Rear Roller Fits OEM	1	46.45	
24	R94-4329	94-4329	Shaft - Greasable Fits OEM	1	46.70	

All original equipment manufacturers names and part numbers are used for identification purposes only, and we are in no way implying that our products are original equipment parts. Prices subject to change without notice.



Replaces Toro Reelmaster 6700D Parts

*Cutting Unit - Models 03857, 03858 & 03859
Rollers*



Item No	R&R Part No.	OEM Part No.	Description	Qty Req	Price Each	Order Quantity
25	R32120-62	32120-62	Ring - Retaining	2	1.95	
26	R93-2931	93-2931	Washer - Roller Seal	2	2.55	
27	R253-70	253-70	Seal	2	4.95	
28	R93-1252	93-1252	Seal - Outer	2	13.95	
29	R93-1251	93-1251	Seal	2	7.25	
30	R343667	109966, 251-6, 38-7820	Bearing - Ball	2	9.05	
31	R93-3007	93-3007	Seal	2	3.55	

All original equipment manufacturers names and part numbers are used for identification purposes only, and we are in no way implying that our products are original equipment parts. Prices subject to change without notice.