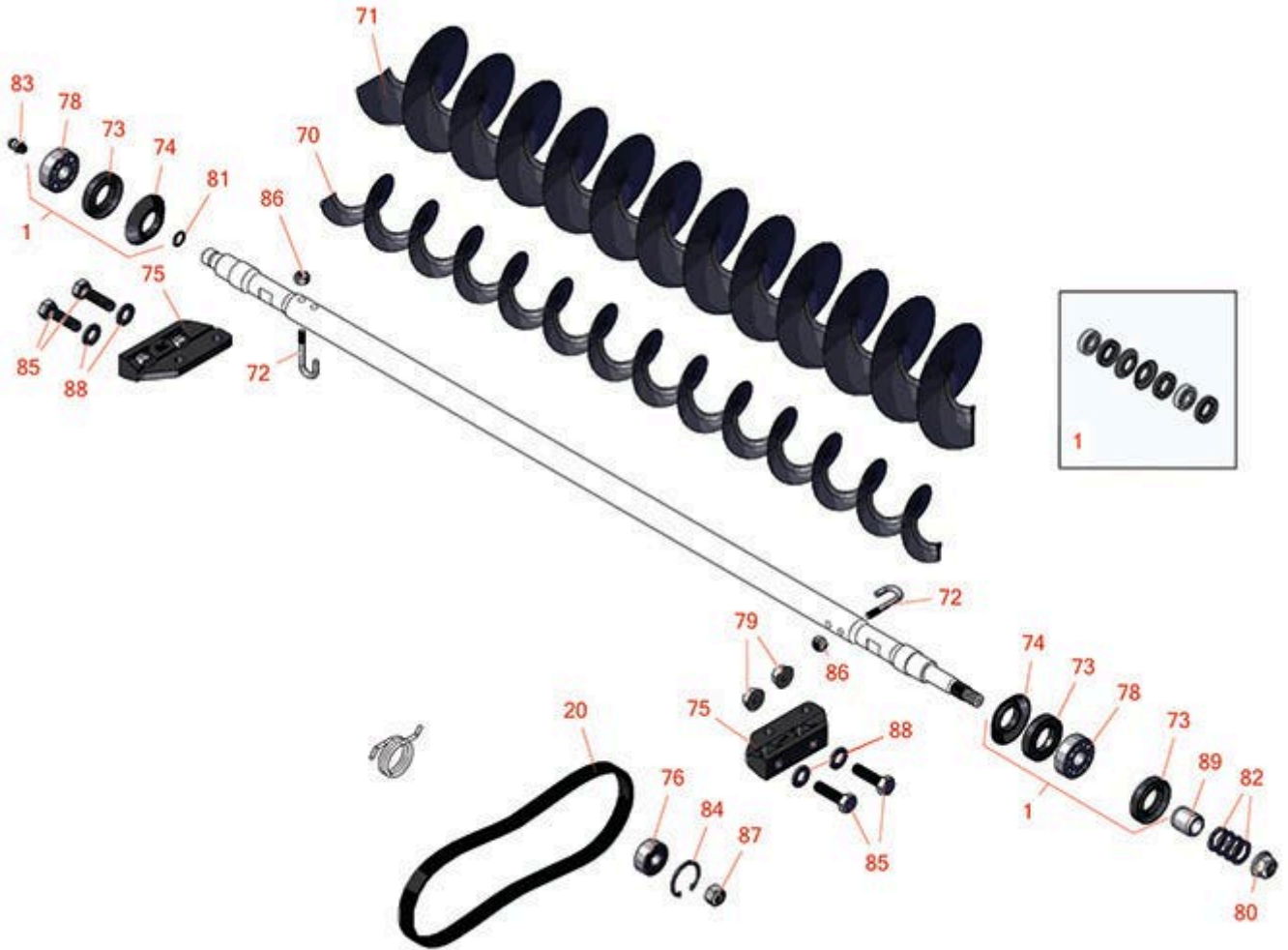




# Replaces Toro Reelmaster 5510-G Parts

DPA Cutting Unit - Models 03638, 03639, 03641 & 03643  
Rear Roller Brush



All original equipment manufacturers names and part numbers are used for identification purposes only, and we are in no way implying that our products are original equipment parts. Prices subject to change without notice.



# Replaces Toro Reelmaster 5510-G Parts

DPA Cutting Unit - Models 03638, 03639, 03641 & 03643  
Rear Roller Brush



Item No	R&R Part No.	OEM Part No.	Description	Qty Req	Price Each	Order Quantity
<b>Overhaul Kits and Service Tools</b>						
1	<b>R131-3233</b>	131-3233	Groomer/Rrb Seal Kit	0	<b>75.15</b>	
<b>Belts</b>						
20	<b>R115-0833</b>	115-0833	Belt- Brush 7 in	1	<b>23.30</b>	
<b>Other Parts Available</b>						
70	<b>R108-4193</b>	108-4193	Brush - Roller - 2 OD	1	<b>56.05</b>	
71	<b>R110-1740</b>	110-1740	Brush-Roller (High HOC) 3.5 in OD	1	<b>55.90</b>	
72	<b>R105-9632</b>	105-9632	Bolt - J	2	<b>7.50</b>	
73	<b>R106-8530</b>	106-8530	Seal - Oil	2	<b>9.05</b>	
74	<b>R108-4172</b>	108-4172	Seal - Excluder	2	<b>5.15</b>	
75	<b>R108-4480</b>	108-4480	Bracket - Rear Roller Brush	2	<b>18.80</b>	
76	<b>R110-1701</b>	110-1701	Bearing	1	<b>12.50</b>	
78	<b>R95-0707</b>	95-0707	Bearing - Self Aligning	2	<b>24.85</b>	
79	<b>R104-8300</b>	104-8300, 104-8300, 119-4041	Locknut - 5/16-18 Flanged Y/Zinc	4	<b>0.47</b>	
80	<b>R104-8301</b>	104-8301, 104-9301, 109-6658, 133-7570	Locknut - 3/8-16 Nylon Flanged	1	<b>0.84</b>	
81	<b>R237-22</b>	107-8844, 237-22, 237-78	O-Ring	1	<b>0.62</b>	
82	<b>R112-6957</b>	112-6957	Washer - Hardened	10	<b>1.25</b>	

All original equipment manufacturers names and part numbers are used for identification purposes only, and we are in no way implying that our products are original equipment parts. Prices subject to change without notice.



## Replaces Toro Reelmaster 5510-G Parts

DPA Cutting Unit - Models 03638, 03639, 03641 & 03643  
Rear Roller Brush



Item No	R&R Part No.	OEM Part No.	Description	Qty Req	Price Each	Order Quantity
83	<b>R302-5</b>	21-6010, 302-11, 302-37, 302-47, 302-5, 302-57, 302-58, 302-6, 31-0300, 32-9660, 60-0800, 62-3880, 92-4181	Fitting - Grease	2	<b>0.27</b>	
84	<b>R32151-60</b>	32151-60	Ring - Snap	1	<b>1.05</b>	
85	<b>R322-16</b>	322-16, Apr-00	Bolt - Hex HD 5/16-18 x 1-1/8	4	<b>1.65</b>	
86	<b>R3296-2</b>	32127-10, 3296-2, 9157404	Nut - #10 Lock	2	<b>0.94</b>	
87	<b>R3296-47</b>	3296-47	Locknut - 5/16-18 Jam Nyloc	1	<b>0.59</b>	
88	<b>R94-6936</b>	94-6936, 94-9236	Washer - Hardened - 5/16 SAE	4	<b>0.57</b>	
89	<b>R108-4491</b>	108-4491	Spacer - Hardened	1	<b>4.95</b>	

All original equipment manufacturers names and part numbers are used for identification purposes only, and we are in no way implying that our products are original equipment parts. Prices subject to change without notice.