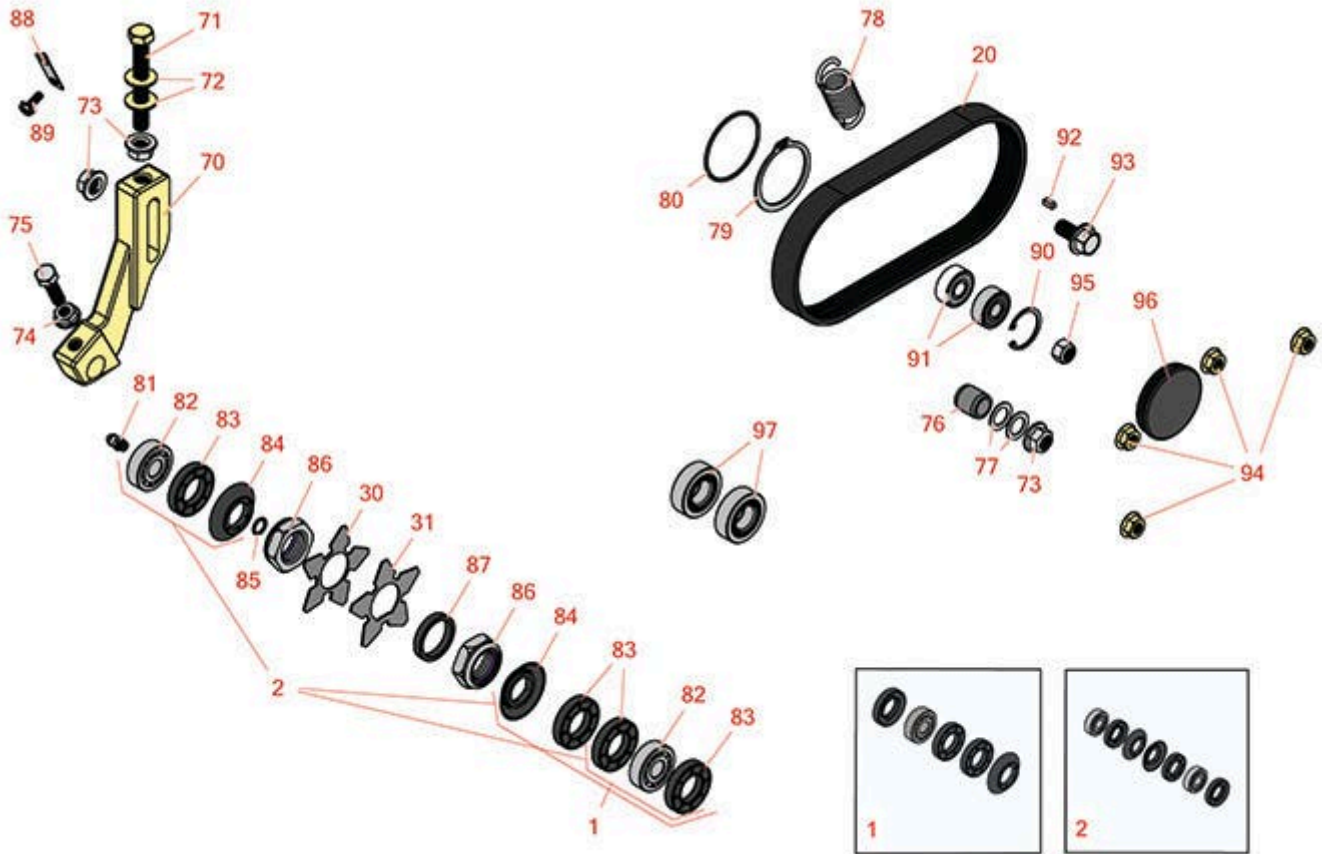




# Replaces Toro Reelmaster 5510-G Parts

DPA Cutting Unit - Models 03638, 03639, 03641 & 03643  
Groomer



All original equipment manufacturers names and part numbers are used for identification purposes only, and we are in no way implying that our products are original equipment parts. Prices subject to change without notice.



# Replaces Toro Reelmaster 5510-G Parts

DPA Cutting Unit - Models 03638, 03639, 03641 & 03643  
Groomer



Item No	R&R Part No.	OEM Part No.	Description	Qty Req	Price Each	Order Quantity
<b>Overhaul Kits and Service Tools</b>						
1	<b>R110-4086</b>	110-4086	Kit - Bearing	1	<b>54.10</b>	
<i>Tech Note: Includes 1 ea: R95-0707 Bearing, R108-4172 Seal; &amp; 3 ea: R106-8530 Seal;</i>						
2	<b>R131-3233</b>	131-3233	Groomer/Rrb Seal Kit	1	<b>75.15</b>	
<b>Belts</b>						
20	<b>R110-1716</b>	110-1716	Belt - Groomer	1	<b>14.95</b>	
<b>Blades</b>						
30	<b>R112-6963</b>	112-6963	Blade - Groomer	40	<b>3.55</b>	
31	<b>R130-4105</b>	130-4105	Blade- Groomer	40	<b>3.55</b>	
<b>Other Parts Available</b>						
70	<b>R108-4214</b>	108-4214	Bracket-HOC - RH - Groomer	1	<b>62.45</b>	
70	<b>R108-4213</b>	108-4213	Bracket- HOC - LH - Groomer	1	<b>62.45</b>	
71	<b>R112-7451</b>	100-9429, 112-7451	Bolt - Hex Tap 3/8-16 x 2-3/4	2	<b>1.95</b>	

All original equipment manufacturers names and part numbers are used for identification purposes only, and we are in no way implying that our products are original equipment parts. Prices subject to change without notice.



# Replaces Toro Reelmaster 5510-G Parts

DPA Cutting Unit - Models 03638, 03639, 03641 & 03643  
Groomer



Item No	R&R Part No.	OEM Part No.	Description	Qty Req	Price Each	Order Quantity
72	<b>R453011</b>	01-166-0100, 01-166-0120, 01-166-0270, 01-166-0500, 01-166-0600, 01-166-0620, 132-4593, 2356-3, 237-12, 24-10-AD, 24-11-AD, 24-11-BD, 24-12-AD, 24-12-BD, 30-9310, 32-8190, 3256-24, 3256-3, 3256-36, 3256-4, 453011, 47-9950, 48-9220, 513458, 7-0052	Washer - Flat 3/8 SAE Y/Zinc	4	<b>0.11</b>	
73	<b>R104-8301</b>	104-8301, 104-9301, 109-6658, 133-7570	Locknut - 3/8-16 Nylon Flanged	4	<b>0.84</b>	
74	<b>R445722</b>	30-8980, 32128-2, 32128-20, 32128-20, 445722	Nut - Serrated Washer	2	<b>0.66</b>	
75	<b>R322-16</b>	322-16, Apr-00	Bolt - Hex HD 5/16-18 x 1-1/8	2	<b>1.65</b>	
76	<b>R108-4491</b>	108-4491	Spacer - Hardened	2	<b>4.95</b>	
77	<b>R112-6957</b>	112-6957	Washer - Hardened	1	<b>1.25</b>	

All original equipment manufacturers names and part numbers are used for identification purposes only, and we are in no way implying that our products are original equipment parts. Prices subject to change without notice.



## Replaces Toro Reelmaster 5510-G Parts

DPA Cutting Unit - Models 03638, 03639, 03641 & 03643  
Groomer



Item No	R&R Part No.	OEM Part No.	Description	Qty Req	Price Each	Order Quantity
78	<b>R110-1700</b>	110-1700, 66-4460	Spring-Extension	1	<b>4.55</b>	
79	<b>R32151-95</b>	32151-90, 32151-95	Retaining Ring	1	<b>3.05</b>	
80	<b>R112-6967</b>	112-6967	O-Ring	2	<b>1.95</b>	
81	<b>R302-5</b>	21-6010, 302-11, 302-37, 302-47, 302-5, 302-57, 302-58, 302-6, 31-0300, 32-9660, 60-0800, 62-3880, 92-4181	Fitting - Grease	2	<b>0.27</b>	
82	<b>R95-0707</b>	95-0707	Bearing - Self Aligning	2	<b>24.85</b>	
83	<b>R106-8530</b>	106-8530	Seal - Oil	3	<b>9.05</b>	
84	<b>R108-4172</b>	108-4172	Seal - Excluder	2	<b>5.15</b>	
85	<b>R237-22</b>	107-8844, 237-22, 237-78	O-Ring	1	<b>0.62</b>	
86	<b>R32127-46</b>	32127-46, 3296-60	Locknut	2	<b>2.85</b>	
87	<b>R70-1350</b>	70-1350	Spacer - 1/4 Fits Groomer Shaft	2	<b>0.83</b>	
88	<b>R104-4754</b>	104-4754	Spring-Detent	2	<b>15.90</b>	
89	<b>R32144-73</b>	104-2065, 32144-73	Screw - Machine Hex Washer Head	2	<b>0.39</b>	
90	<b>R32151-60</b>	32151-60	Ring - Snap	1	<b>1.05</b>	

All original equipment manufacturers names and part numbers are used for identification purposes only, and we are in no way implying that our products are original equipment parts. Prices subject to change without notice.



## Replaces Toro Reelmaster 5510-G Parts

*DPA Cutting Unit - Models 03638, 03639, 03641 & 03643  
Groomer*



Item No	R&R Part No.	OEM Part No.	Description	Qty Req	Price Each	Order Quantity
91	<b>R110-1701</b>	110-1701	Bearing	2	<b>12.50</b>	
92	<b>R95-9619</b>	95-9619	Key - Square 1/8 x 1/8 x 5/16	1	<b>0.91</b>	
93	<b>R110-1718</b>	110-1718	Screw-HHF	1	<b>1.10</b>	
94	<b>R104-8300</b>	104-8300, 104-8300, 119-4041	Locknut - 5/16-18 Flanged Y/Zinc	4	<b>0.47</b>	
95	<b>R3296-47</b>	3296-47	Locknut - 5/16-18 Jam Nyloc	1	<b>0.59</b>	
96	<b>R105-5761</b>	105-5761	Grommet	1	<b>7.65</b>	
97	<b>R115-6869</b>	115-6869	Bearing - Ball -Stainless	2	<b>32.55</b>	

All original equipment manufacturers names and part numbers are used for identification purposes only, and we are in no way implying that our products are original equipment parts. Prices subject to change without notice.