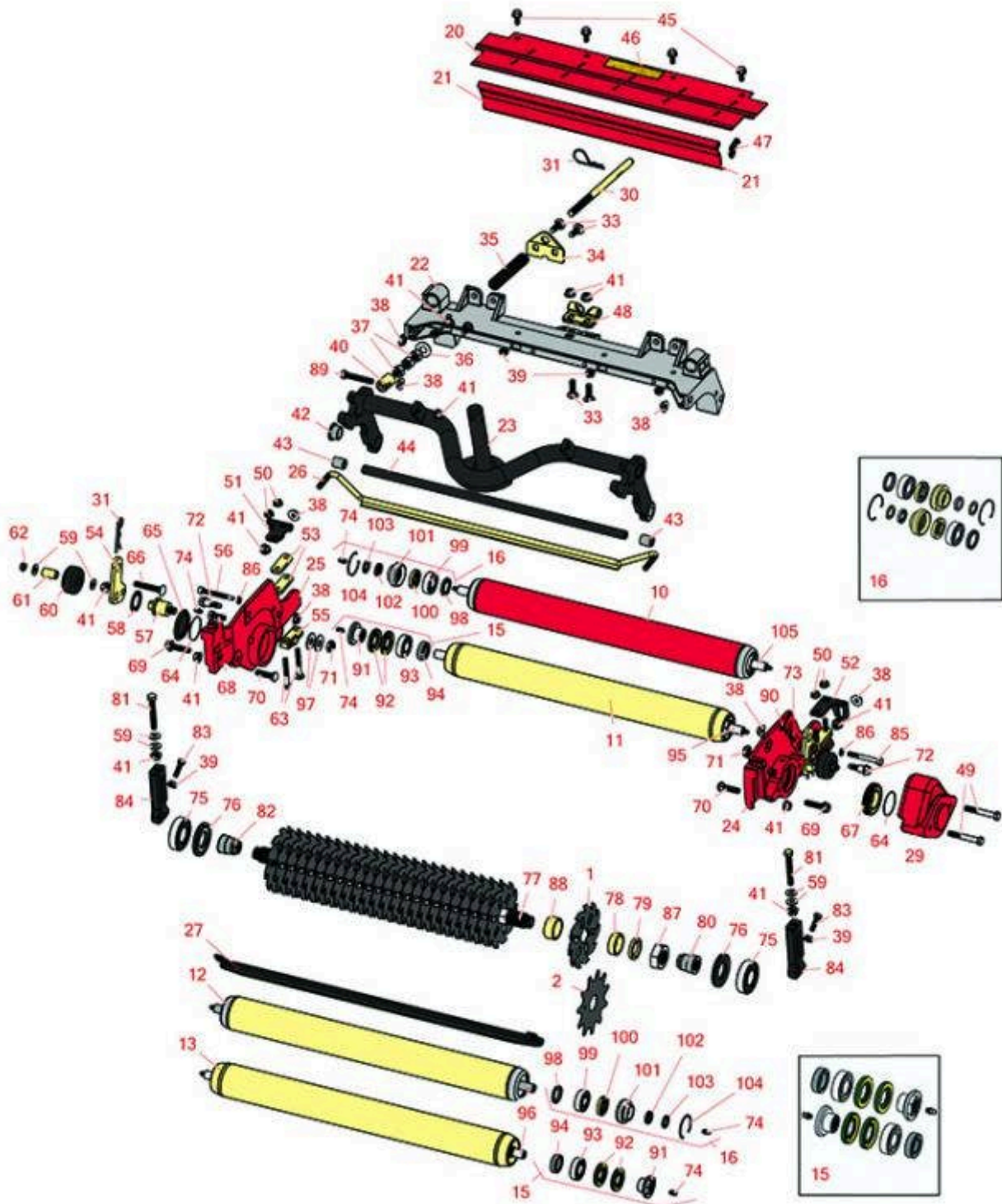




# Replaces Toro Reelmaster 5410-D Parts

Verti-Cut Unit with 5" Reel - Model 03664

Verti-Cut Reel & Frame



All original equipment manufacturers names and part numbers are used for identification purposes only, and we are in no way implying that our products are original equipment parts. Prices subject to change without notice.



# Replaces Toro Reelmaster 5410-D Parts

Verti-Cut Unit with 5" Reel - Model 03664

Verti-Cut Reel & Frame



Item No	R&R Part No.	OEM Part No.	Description	Qty Req	Price Each	Order Quantity
<b>Blades</b>						
1	<b>R150209C</b>	106-6355	Verti-Cut Blade - Carbide Tipped 2mm	25	<b>11.95</b>	
2	<b>R17-1590</b>	17-1590	Verti-Cut Blade	25	<b>3.95</b>	
<b>Rollers</b>						
10	<b>R107-4040</b>	107-4040	Roller - Smooth Tubular Steel	1	<b>253.50</b>	
<i>Tech Note: Constructed with a through shaft, this heavy-duty roller uses greasable ball bearings. (2006 - 2007):</i>						
11	<b>R114-5404</b>	114-5404, 137-6107	Roller - Smooth Tubular Steel - Long	1	<b>171.05</b>	
<i>Tech Note: Constructed with a through shaft, this heavy-duty roller uses greasable stainless ball bearings. (2006 - 2007):</i>						
12	<b>R110-9614</b>	110-9614	Roller Assy - 2.5 Solid Front	1	<b>275.75</b>	
<i>Tech Note: Constructed with a through shaft, this heavy duty roller uses greasable ball bearings.:</i>						
13	<b>R114-5419</b>	114-5419, 137-6109	Roller - Smooth Tubular Steel	1	<b>253.55</b>	
<b>Overhaul kits</b>						
15	<b>R114-5430</b>	114-5430	Overhaul Kit - Roller	1	<b>82.40</b>	
<i>Tech Note: Includes 4 ea.: R112-7494 Seals; 2 ea.: R302-5 Grease Zerks, R114-3717 Seals, R112-5290 Bearings &amp; R114-3745 Locknuts:</i>						
16	<b>R106-9606</b>	106-9606	Overhaul Kit - Roller	1	<b>83.15</b>	
<i>Tech Note: Include 2 ea: R343667 Bearings, R253-70 Seals, R32120-62 Retaining Rings, R93-1251 Seals, R93-1252 Seals, R93-2931 Washers, R93-3007 Seals:</i>						
<b>Other Parts Available</b>						
20	<b>R107-2996</b>	107-2996	Grass Shield - Front	1	<b>29.40</b>	

All original equipment manufacturers names and part numbers are used for identification purposes only, and we are in no way implying that our products are original equipment parts. Prices subject to change without notice.



# Replaces Toro Reelmaster 5410-D Parts

Verti-Cut Unit with 5" Reel - Model 03664

Verti-Cut Reel & Frame



Item No	R&R Part No.	OEM Part No.	Description	Qty Req	Price Each	Order Quantity
21	<b>R107-7777-01</b>	107-7777-01	Grass Shield Assy - Rear	1	<b>55.20</b>	
22	<b>R107-2951</b>	107-2951	Frame	1	<b>136.25</b>	
23	<b>R106-3937</b>	106-3937	Carrier Frame Assy	1	<b>282.65</b>	
24	<b>R110-9628</b>	110-9628	LH Side Plate Assy	1	<b>185.50</b>	
25	<b>R110-9629</b>	110-9629	RH Side Plate Assy	1	<b>182.75</b>	
26	<b>R107-2999</b>	107-2999	Scraper - Rear Roller	1	<b>30.95</b>	
27	<b>R108-4475-03</b>	108-4475-03	Scraper - Full Front 2.5 in	1	<b>29.30</b>	
29	<b>R108-9090-01</b>	108-9090-01	Weight	1	<b>59.10</b>	
30	<b>R108-4959</b>	108-4959	Rod - Turf Tension	1	<b>30.90</b>	
31	<b>R92-2762</b>	92-2762	Pin - Snap	1	<b>1.50</b>	
33	<b>R3231-25</b>	01-173-0610, 30-9970, 3231-25, 3231-3, 900064P	Bolt - Carriage 3/8-16 x 1-1/4	4	<b>0.66</b>	
34	<b>R110-4069</b>	110-4069	Bracket	1	<b>7.05</b>	
35	<b>R108-4960</b>	108-4960	Spring - Turf Tension	1	<b>13.15</b>	
36	<b>R453017</b>	01-166-0050, 01-166-0240, 01-166-0800, 24-13-AD, 24-14-AD, 32-8110, 3256-26, 3256-6, 453017, 69-8980, 87-7270	Washer - Flat 1/2	1	<b>0.28</b>	

All original equipment manufacturers names and part numbers are used for identification purposes only, and we are in no way implying that our products are original equipment parts. Prices subject to change without notice.



# Replaces Toro Reelmaster 5410-D Parts

Verti-Cut Unit with 5" Reel - Model 03664

Verti-Cut Reel & Frame



Item No	R&R Part No.	OEM Part No.	Description	Qty Req	Price Each	Order Quantity
37	<b>R443818</b>	01-191-0813, 3218-18, 3218-5, 3248-18	Nut - 1/2-13 Hex Jam Zinc	3	<b>0.35</b>	
38	<b>R32128-43</b>	30-8990, 32128-43, 3290-357	Nut - Flanged Whiz - 3/8-16	7	<b>0.62</b>	
39	<b>R445722</b>	30-8980, 32128-2, 32128-20, 32128-20, 445722	Nut - Serrated Washer	6	<b>0.66</b>	
40	<b>R99-8662</b>	99-8662	Tube - Spring	1	<b>11.55</b>	
41	<b>R104-8301</b>	104-8301, 104-9301, 109-6658, 133-7570	Locknut - 3/8-16 Nylon Flanged	13	<b>0.84</b>	
42	<b>R93-2877</b>	93-2877	Bushing - Flanged	2	<b>3.65</b>	
43	<b>R108-4279</b>	108-4279	Spacer - Frame	2	<b>6.75</b>	
44	<b>R108-4284</b>	108-4284	Shaft - Support	1	<b>32.70</b>	
45	<b>R3234-5</b>	3234-5, 62-3310	Bolt - 5/16-18x3/4 Hx Ser Was HD	4	<b>0.74</b>	
46	<b>R93-6688</b>	93-6688	Decal - Warning	1	<b>2.30</b>	
47	<b>R108-4961</b>	108-4961	Tab - Stop - Shield	1	<b>26.35</b>	
48	<b>R110-4058</b>	110-4058	Bracket - Chain	1	<b>19.40</b>	

All original equipment manufacturers names and part numbers are used for identification purposes only, and we are in no way implying that our products are original equipment parts. Prices subject to change without notice.



# Replaces Toro Reelmaster 5410-D Parts

Verti-Cut Unit with 5" Reel - Model 03664

Verti-Cut Reel & Frame



Item No	R&R Part No.	OEM Part No.	Description	Qty Req	Price Each	Order Quantity
49	<b>R101526</b>	01-150-0970, 01-178-0620, 101526, 20-53-AGD, 321-11, 3224-8, 323-11, 323-12, 323-31, 323-4, 323-47	Bolt - Hex HD 3/8-16 x 2-1/2 GR5	2	<b>0.91</b>	
50	<b>R104-8300</b>	104-8300, 104-8300 , 119-4041	Locknut - 5/16-18 Flanged Y/Zinc	4	<b>0.47</b>	
51	<b>R107-3281</b>	107-3281	Bracket - Scraper - RH	1	<b>16.40</b>	
52	<b>R107-3279</b>	107-3279	Bracket - Scraper - LH	1	<b>16.40</b>	
53	<b>R106-3925</b>	106-3925	Shim - 1/4 - Rear Roller HOC	4	<b>4.50</b>	
54	<b>R108-4286</b>	108-4286	Bracket - Adj	2	<b>9.80</b>	
55	<b>R106-3924</b>	106-3924	Bracket - Rear Roller	2	<b>15.70</b>	
56	<b>R107-7773</b>	107-7773	Bolt - Soc HD Cap 5/16-18 x 2-1/2	1	<b>7.50</b>	
57	<b>R108-4289</b>	108-4289	Pin - Roller Mounting	2	<b>35.55</b>	
58	<b>R3254-21</b>	3254-21	Washer - 1 in Interl Star	2	<b>2.15</b>	

All original equipment manufacturers names and part numbers are used for identification purposes only, and we are in no way implying that our products are original equipment parts. Prices subject to change without notice.



# Replaces Toro Reelmaster 5410-D Parts

Verti-Cut Unit with 5" Reel - Model 03664

Verti-Cut Reel & Frame



Item No	R&R Part No.	OEM Part No.	Description	Qty Req	Price Each	Order Quantity
59	<b>R453011</b>	01-166-0100, 01-166-0120, 01-166-0270, 01-166-0500, 01-166-0600, 01-166-0620, 132-4593, 2356-3, 237-12, 24-10-AD, 24-11-AD, 24-11-BD, 24-12-AD, 24-12-BD, 30-9310, 32-8190, 3256-24, 3256-3, 3256-36, 3256-4, 453011, 47-9950, 48-9220, 513458, 7-0052	Washer - Flat 3/8 SAE Y/Zinc	0	<b>0.11</b>	
60	<b>R108-4293</b>	108-4293	Roller - Verti-Cut	2	<b>9.95</b>	
61	<b>R59-2580</b>	59-2580	Spacer - Wheel	2	<b>5.30</b>	
62	<b>R3296-59</b>	3296-59	Locknut - 3/8-16 Nylon Jam	2	<b>0.65</b>	
63	<b>RP17609-2</b>	106-9758, 3230-7	Bolt - Carriage 5/16-18 x 1-1/2	4	<b>0.46</b>	
64	<b>R237-68</b>	237-68	O-Ring	2	<b>2.45</b>	
65	<b>R150485</b>	2410-30, 2410-30OSS	Cap - Protective Bearing Housing	1	<b>0.70</b>	
66	<b>R3231-7</b>	3231-33, 3231-7	Bolt - Carriage 3/8-16 x 2-1/4	2	<b>3.85</b>	
67	<b>R107-2954</b>	107-2954	Nut - Bearing Adjuster	1	<b>11.50</b>	
68	<b>R3234-11</b>	3234-11	Bolt - Hex Washer HD	2	<b>1.05</b>	

All original equipment manufacturers names and part numbers are used for identification purposes only, and we are in no way implying that our products are original equipment parts. Prices subject to change without notice.



# Replaces Toro Reelmaster 5410-D Parts

Verti-Cut Unit with 5" Reel - Model 03664

Verti-Cut Reel & Frame



Item No	R&R Part No.	OEM Part No.	Description	Qty Req	Price Each	Order Quantity
69	<b>R3234-19</b>	3234-19	Bolt - Hex Washer 3/8-16x1-3/4	2	<b>1.75</b>	
70	<b>R3231-4</b>	01-157-0440, 01-173-0612, 3231-4	Bolt - Carriage 3/8-16 x 1-1/2	2	<b>1.20</b>	
71	<b>R3296-28</b>	119-4154, 140-9234, 32127-34, 32128-7, 32128-8, 32136-7, 3296-28	Nut - 1/2-20 ESNA Jam	2	<b>1.25</b>	
72	<b>R107-2979</b>	107-2979	Bolt - Shoulder	4	<b>3.25</b>	
73	<b>R170714</b>	302-34, 302-39, 62-3520	Fitting - Pressure Relief	2	<b>2.25</b>	
74	<b>R302-5</b>	21-6010, 302-11, 302-37, 302-47, 302-5, 302-57, 302-58, 302-6, 31-0300, 32-9660, 60-0800, 62-3880, 92-4181	Fitting - Grease	6	<b>0.27</b>	
75	<b>R93-2489</b>	93-2489	Bearing - Reel	2	<b>21.20</b>	
76	<b>R107-4028</b>	105-6757, 107-4028	Seal - Grease	2	<b>16.05</b>	
77	<b>R108-4955</b>	108-4955	Shaft Assy - V-Cut	1	<b>250.45</b>	
78	<b>R17-1580</b>	17-1580	Spacer - V-Cut Reel 1/2	1	<b>2.90</b>	
79	<b>R108-4994</b>	108-4994	Spacer - 1/4 in - V-Cut Shaft	1	<b>11.30</b>	

All original equipment manufacturers names and part numbers are used for identification purposes only, and we are in no way implying that our products are original equipment parts. Prices subject to change without notice.



# Replaces Toro Reelmaster 5410-D Parts

Verti-Cut Unit with 5" Reel - Model 03664

Verti-Cut Reel & Frame



Item No	R&R Part No.	OEM Part No.	Description	Qty Req	Price Each	Order Quantity
80	<b>R108-4957</b>	108-4957	Insert-LH - Verticut	1	<b>83.15</b>	
81	<b>R112-7451</b>	100-9429, 112-7451	Bolt - Hex Tap 3/8-16 x 2-3/4	2	<b>1.95</b>	
82	<b>R108-4958</b>	108-4958	Insert- RH - Verticut	1	<b>83.15</b>	
83	<b>R322-16</b>	322-16, Apr-00	Bolt - Hex HD 5/16-18 x 1-1/8	2	<b>1.65</b>	
84	<b>R107-2952</b>	107-2952	Bracket - Front Roller	2	<b>31.55</b>	
85	<b>R322-14</b>	01-150-0830, 01-178-0524, 30-8900, 322-14	Bolt - Hex HD 5/16-18 x 3 GR5	1	<b>2.15</b>	
86	<b>R3256-74</b>	3256-74	Washer - Flat	1	<b>0.65</b>	
87	<b>R3220-18</b>	3220-18, 67-5840	Nut - Jam V-Cut Shaft	1	<b>4.85</b>	
88	<b>R82-6600</b>	82-6600	Spacer - V-Cut	24	<b>3.25</b>	
89	<b>R104-3396</b>	104-3396	Bolt - Hex HD 3/8-16 x 2-1/4	1	<b>1.55</b>	
90	<b>R106-4214</b>	106-4214	Set Screw - 1/4-20 x 1/2 Cone Point	1	<b>2.55</b>	
91	<b>R114-3745</b>	114-3745, 114-5411	Locknut - Bearing - Stainless	3	<b>19.15</b>	
92	<b>R112-7494</b>	112-7494	Seal	6	<b>5.15</b>	
93	<b>R112-5290</b>	112-5290, 251--346, 251-346, 72-5430	Bearing - Stainless	3	<b>10.30</b>	
94	<b>R114-3717</b>	114-3717	Seal	3	<b>2.35</b>	
95	<b>R114-5407</b>	114-5407	Shaft - Long Rear Roller	1	<b>58.75</b>	
96	<b>R110-4053</b>	110-4053	Shaft - Front Roller	1	<b>59.05</b>	

All original equipment manufacturers names and part numbers are used for identification purposes only, and we are in no way implying that our products are original equipment parts. Prices subject to change without notice.





## Replaces Toro Reelmaster 5410-D Parts

*Verti-Cut Unit with 5" Reel - Model 03664*

*Verti-Cut Reel & Frame*



Item No	R&R Part No.	OEM Part No.	Description	Qty Req	Price Each	Order Quantity
97	<b>R453013</b>	01-166-0140, 01-166-0700, 3256-5, 80-4850	Washer - Flat 7/16	4	<b>0.26</b>	
98	<b>R93-3007</b>	93-3007	Seal	1	<b>3.55</b>	
99	<b>R343667</b>	109966, 251-6, 38-7820	Bearing - Ball	1	<b>9.05</b>	
100	<b>R93-1251</b>	93-1251	Seal	1	<b>7.25</b>	
101	<b>R93-1252</b>	93-1252	Seal - Outer	1	<b>13.95</b>	
102	<b>R253-70</b>	253-70	Seal	1	<b>4.95</b>	
103	<b>R93-2931</b>	93-2931	Washer - Roller Seal	1	<b>2.55</b>	
104	<b>R32120-62</b>	32120-62	Ring - Retaining	1	<b>1.95</b>	
105	<b>R107-3296</b>	107-3296, 99-5717	Shaft - Rear Long Roller	1	<b>57.90</b>	

All original equipment manufacturers names and part numbers are used for identification purposes only, and we are in no way implying that our products are original equipment parts. Prices subject to change without notice.