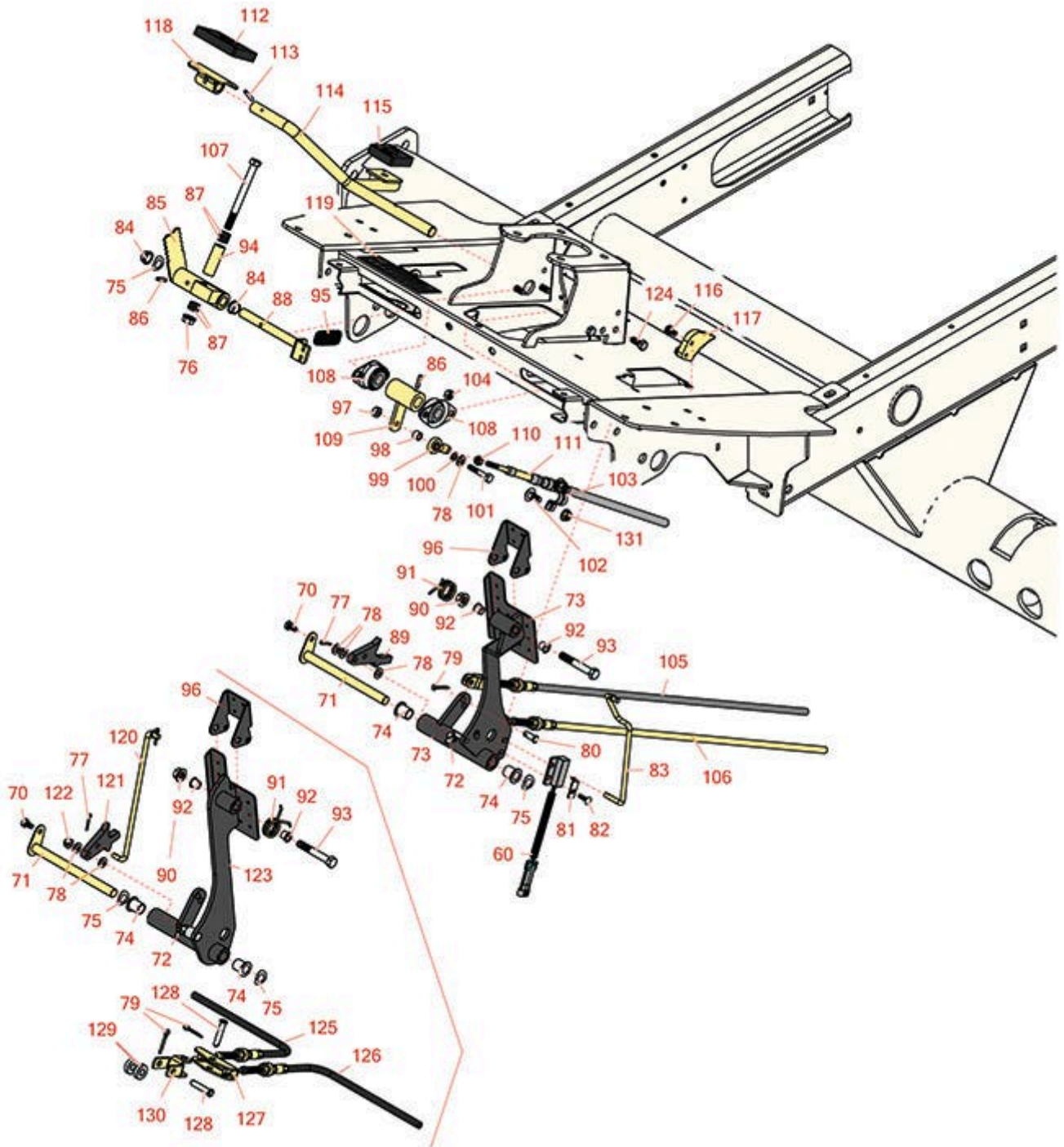




Replaces Toro Reelmaster 5410-D Parts

Traction Unit
Traction Pedal



Fits 5210 - 5610, 2010 and Up

All original equipment manufacturers names and part numbers are used for identification purposes only, and we are in no way implying that our products are original equipment parts. Prices subject to change without notice.



Replaces Toro Reelmaster 5410-D Parts

Traction Unit
Traction Pedal



Item No	R&R Part No.	OEM Part No.	Description	Qty Req	Price Each	Order Quantity
60	R100-1270	100-1270	Sensor - Proximity	1	74.85	
<i>Tech Note: Fits 2006-2009:</i>						
70	R12-3270	12-3270, 30-0700, 32104-17, 9266714, Aug-80	Bolt - Hex Washer 1/4-20 x 1/2	1	1.45	
71	R104-7179	104-7179, 99-7169	Pivot-Pedal	1	19.90	
72	R302-60	302-60	Zerk - Grease 90 Deg.	1	0.68	
73	R106-3712-03	106-3712-03	Pedal-Brake	1	121.80	
<i>Tech Note: Fits 2006-2009:</i>						
74	R256-155	256-155, 265-155	Bushing - Flanged	2	3.45	
75	R110-8982	110-8982	Washer - Spring	2	2.85	
76	R3296-39	32127-25, 32128-36, 3290-357, 3296-17, 3296-22, 3296-39, 915663P, 99-7443	Locknut - 3/8-16 Nylon	1	1.40	
77	R1023-4	01-151-0150, 1023-4, 19-6220, 214-14, 215-54, 28-9-D, 3272-4, 3272-6, 513567, 932008P	Pin - Cotter 3/32 x 3/4	1	0.23	

All original equipment manufacturers names and part numbers are used for identification purposes only, and we are in no way implying that our products are original equipment parts. Prices subject to change without notice.



Replaces Toro Reelmaster 5410-D Parts

Traction Unit
Traction Pedal



Item No	R&R Part No.	OEM Part No.	Description	Qty Req	Price Each	Order Quantity
78	R3256-22	24-9-BD, 3-1032, 3256-1, 3256-22, 93-0954, 93-0989	Washer - Flat 1/4 Yellow	3	0.12	
79	R3272-10	01-151-0120, 105-7512, 3272-10, N/A	Pin - Cotter 1/8 x 3/4	2	0.13	
80	R283-62	283-62	Pin - Clevis 5/16 x 3/4	2	0.74	
<i>Tech Note: Fits 2006-2009:</i>						
81	R100-4872	100-4872, 104-7702	Plate-Switch - Neutral	1	6.70	
<i>Tech Note: Fits 2006-2009:</i>						
82	R3229-34	3229-34	Bolt- Carriage 10	1	1.25	
83	R110-0914	110-0914	Rod-Pawl, Brake	1	12.65	
84	R256-156	256-156, 256-219	Bushing - Flanged	2	6.80	
85	R115-8078	106-3734	Mow Stop	1	78.60	
<i>Tech Note: Fits 2006-2009:</i>						
85	R117-8066	117-8066	Mow-Stop	1	63.60	
86	R32121-6	32121-6	Pin - Roll 3/16 x 1-1/4	2	0.46	
87	R62-4420	62-4420	Washer	8	4.35	
88	R106-3731	106-3731	Rod-Pivot	1	21.80	
89	R106-3713	106-3713	Detent	1	9.55	
<i>Tech Note: Fits 2006-2009:</i>						

All original equipment manufacturers names and part numbers are used for identification purposes only, and we are in no way implying that our products are original equipment parts. Prices subject to change without notice.



Replaces Toro Reelmaster 5410-D Parts

*Traction Unit
Traction Pedal*



Item No	R&R Part No.	OEM Part No.	Description	Qty Req	Price Each	Order Quantity
90	R104-8301	104-8301, 104-9301, 109-6658, 133-7570	Locknut - 3/8-16 Nylon Flanged	1	0.84	
91	R99-7140	99-7140	Spring-Torsion	1	12.30	
92	R52-2891	52-2891	Bushing- Nylon	1	2.35	
93	R101526	01-150-0970, 01-178-0620, 101526, 20-53-AGD, 321-11, 3224-8, 323-11, 323-12, 323-31, 323-4, 323-47	Bolt - Hex HD 3/8-16 x 2-1/2 GR5	1	0.91	
94	R95-6448	95-6448	Spacer	1	7.25	
95	R92-7305	92-7305	Spring-Extension	1	5.70	
96	R99-7963-03	99-7963-03	Pedal - Park	1	14.85	
97	R301504	2296-42, 301504, 32127-24, 32128-33, 32146-17, 3296-16, 3296-42, 3296-42 , 915661P	Locknut - ESNA 1/4-20	1	0.18	
98	R99-3545	99-3545	Spacer	1	3.75	
99	R2411-41	2411-41	Rod End - Ball Joint	1	22.35	
100	R24M7139	24M7139, 3256-16, 33093-00, 43-5930	Washer - Flat 6mm	1	0.70	

All original equipment manufacturers names and part numbers are used for identification purposes only, and we are in no way implying that our products are original equipment parts. Prices subject to change without notice.



Replaces Toro Reelmaster 5410-D Parts

Traction Unit
Traction Pedal



Item No	R&R Part No.	OEM Part No.	Description	Qty Req	Price Each	Order Quantity
100	R6050-103	48-8010, 48-8030	Washer - Flat	1	0.23	
101	R400116	20-7-AD, 30-9680, 321-69, 321-9, 3222-3, 400116	Bolt - Hex HD 1/4-20 x 1-1/2	1	0.65	
102	R3230-23	3230-23, Mar-61	Bolt - 5/16-18x3/4 - Carriage	6	0.70	
<i>Tech Note: Fits 2006-2009:</i>						
103	R93-2092	93-2092	Clamp - Cable	1	3.95	
<i>Tech Note: Fits 2006-2009:</i>						
104	R3296-29	1-804256, 3290-357, 3296-29, 915662P	Locknut - 5/16-18 ESNA	4	2.95	
<i>Tech Note: Fits 2006-2009:</i>						
105	R110-9036	110-9036	Cable - Brake RH	0	61.85	
<i>Tech Note: Fits 2006-2009:</i>						
106	R110-9037	110-9037	Cable - Brake LH	0	61.85	
<i>Tech Note: Fits 2006-2009:</i>						
107	R323-17	323-17	Bolt - Hex HD 3/8-16 x 4	1	3.25	
108	R256-236	256-236, Oct-40	Bearing - 5/8 Flanged 2 Bolt	2	23.85	
109	R106-3719	106-3719	Hub-Pedal - Traction	1	27.90	
110	R3220-1	3220-1	Nut - 1/4-28 Jam	1	0.14	
111	R107-2084	107-2084	Traction Cable Assy	1	82.20	

All original equipment manufacturers names and part numbers are used for identification purposes only, and we are in no way implying that our products are original equipment parts. Prices subject to change without notice.



Replaces Toro Reelmaster 5410-D Parts

Traction Unit
Traction Pedal



Item No	R&R Part No.	OEM Part No.	Description	Qty Req	Price Each	Order Quantity
112	R74-9100	74-9100	Rubber Foot Pad - Forward	1	10.95	
113	R32121-45	32121-113, 32121-45, 32121-92	Pin - Spring Roll 5/32 x 1	1	0.24	
114	R106-3840	106-3840	Pedal-Traction	1	48.60	
115	R74-9110	74-9110	Rubber Foot Pad - Reverse	1	9.30	
116	R3234-13	3234-13, 960151P	Bolt - Flanged Hex 1/4-20	2	0.77	
117	R99-7214	99-7214	Pawl - Brake	1	21.75	
118	R49-6440-03	117-9507, 49-6440, 49-6440-03	Pedal - Forward Assy	1	34.80	
119	R110-8921	110-8921	Decal-Speed, Mow	1	6.75	
120	R115-0129	115-0129	Rod-Pawl - Brake	1	20.45	
<i>Tech Note: Fits 2010 & Up:</i>						
121	R117-0238	117-0238	Detent	1	8.10	
<i>Tech Note: Fits 2010 & Up:</i>						
122	R104-7201	104-7201	Locknut - 1/4-20 ESNA Flanged	1	0.62	
<i>Tech Note: Fits 2010 & Up:</i>						
123	R115-0120-03	115-0120-03	Pedal - Brake	1	90.60	
<i>Tech Note: Fits 2010 & Up:</i>						

All original equipment manufacturers names and part numbers are used for identification purposes only, and we are in no way implying that our products are original equipment parts. Prices subject to change without notice.



Replaces Toro Reelmaster 5410-D Parts

Traction Unit
Traction Pedal



Item No	R&R Part No.	OEM Part No.	Description	Qty Req	Price Each	Order Quantity
124	R322-3	01-150-1420, 01-178-0506, 20-24-AD, 20-24-AGD, 322-3, 48-9270, 513339, 908017P	Bolt - Hex HD 5/16-18 x 3/4	4	0.62	
125	R117-0106	117-0106	Cable - Brake - RH	1	72.45	
<i>Tech Note: Fits 2010 & Up. Fits 2010 & Up:</i>						
126	R117-0107	117-0107	Cable - Brake - LH	1	72.45	
<i>Tech Note: Fits 2010 & Up. Fits 2010 & Up:</i>						
127	R115-8059	115-8059	Yoke - Cable	1	8.10	
<i>Tech Note: Fits 2010 & Up:</i>						
128	R283-14	283-14	Pin - Clevis	2	3.65	
<i>Tech Note: Fits 2010 & Up:</i>						
129	R5-0652	5-0652	Spacer	2	4.80	
<i>Tech Note: Fits 2010 & Up:</i>						
130	R115-8060	115-8060	Clevis - Double	1	11.30	
<i>Tech Note: Fits 2010 & Up:</i>						
131	R104-8300	104-8300, 104-8300 , 119-4041	Locknut - 5/16-18 Flanged Y/Zinc	2	0.47	

All original equipment manufacturers names and part numbers are used for identification purposes only, and we are in no way implying that our products are original equipment parts. Prices subject to change without notice.