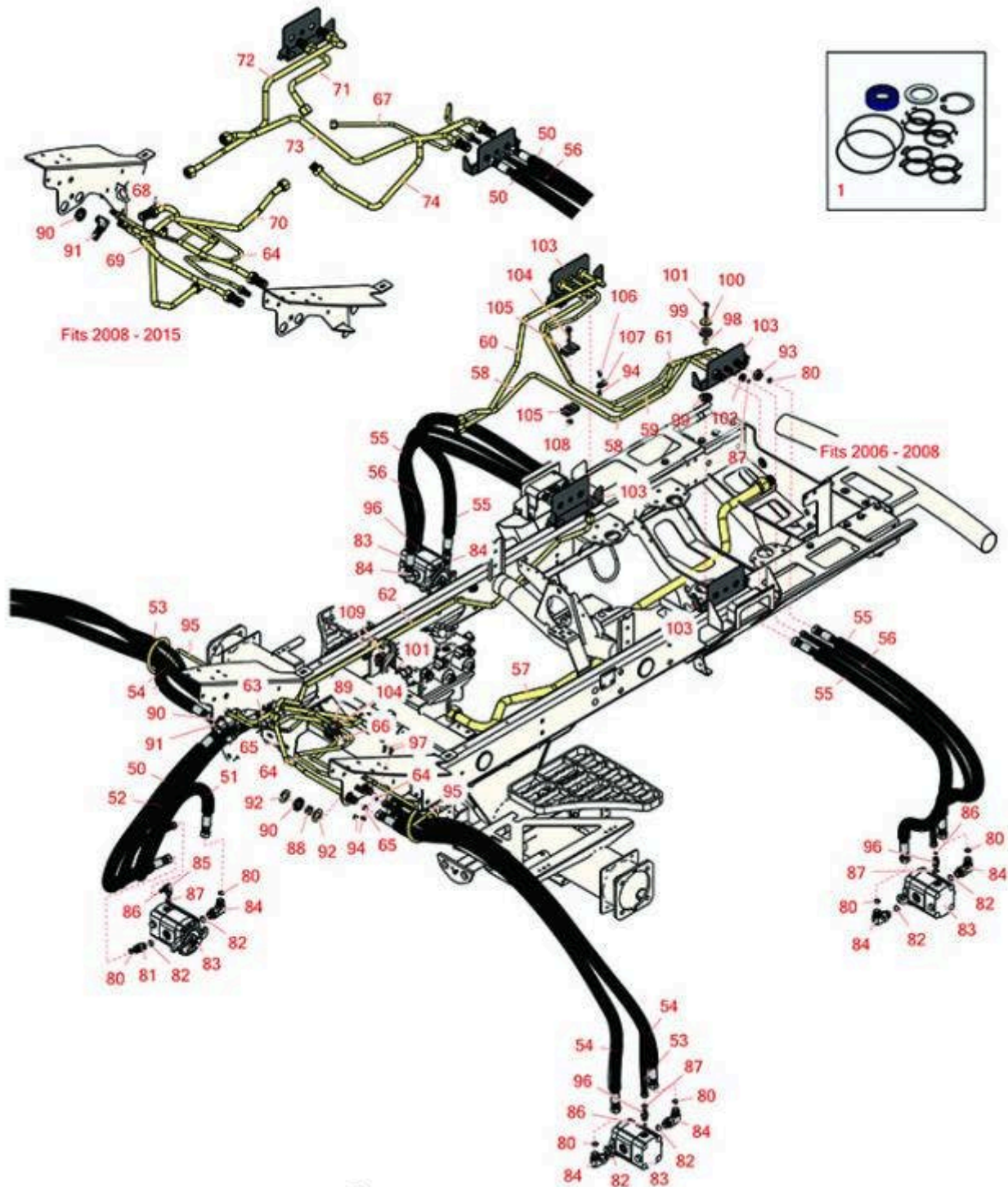




# Replaces Toro Reelmaster 5410-D Parts

Traction Unit  
Reel Hydraulics



All original equipment manufacturers names and part numbers are used for identification purposes only, and we are in no way implying that our products are original equipment parts. Prices subject to change without notice.



# Replaces Toro Reelmaster 5410-D Parts

Traction Unit  
Reel Hydraulics



Item No	R&R Part No.	OEM Part No.	Description	Qty Req	Price Each	Order Quantity
---------	--------------	--------------	-------------	---------	------------	----------------

## Overhaul Kits and Service Tools

1	<b>R112-9184</b>	112-9184	Seal Kit - Fits Toro and Turolla R112-9200 Motor	1	<b>124.45</b>	
1	<b>R119-6992</b>	119-6992	Seal Kit - Fits R119-6987 & R119-6988 Cylinder	1	<b>89.40</b>	

## Hoses

50	<b>R106-3669</b>	106-3669	Hydraulic Hose Assy	1	<b>66.40</b>	
<i>Tech Note: Fits 2006-2009:</i>						

50	<b>R114-0633</b>	114-0633	Hydraulic Hose Assy	1	<b>124.75</b>	
----	------------------	----------	---------------------	---	---------------	--

51	<b>R106-3670</b>	106-3670	Hydraulic Hose Assy	1	<b>65.30</b>	
----	------------------	----------	---------------------	---	--------------	--

*Tech Note: Fits 2006-2009:*

51	<b>R117-5190</b>	117-5190	Hydraulic Hose Assy	1	<b>128.40</b>	
----	------------------	----------	---------------------	---	---------------	--

52	<b>R106-3671</b>	106-3671	Hydraulic Hose Assy	1	<b>47.65</b>	
----	------------------	----------	---------------------	---	--------------	--

53	<b>R106-3680</b>	106-3680	Hose	1	<b>44.85</b>	
----	------------------	----------	------	---	--------------	--

54	<b>R114-8868</b>	114-8868	Hydraulic Hose Assy	2	<b>111.20</b>	
----	------------------	----------	---------------------	---	---------------	--

54	<b>R117-5188</b>	117-5188	Hydraulic Hose Assy	1	<b>160.95</b>	
----	------------------	----------	---------------------	---	---------------	--

55	<b>R106-3672</b>	106-3672	Hydraulic Hose Assy	4	<b>52.60</b>	
----	------------------	----------	---------------------	---	--------------	--

*Tech Note: Fits 2006-2009:*

56	<b>R98-4590</b>	98-4590	Hydraulic Hose Assy	2	<b>45.40</b>	
----	-----------------	---------	---------------------	---	--------------	--

57	<b>R108-1700</b>	108-1700	Tube Assy	1	<b>102.55</b>	
----	------------------	----------	-----------	---	---------------	--

58	<b>R108-1701</b>	108-1701	Tube Assy	1	<b>89.40</b>	
----	------------------	----------	-----------	---	--------------	--

*Tech Note: Fits 2006-2009:*

59	<b>R108-1702</b>	108-1702	Tube Assy	1	<b>83.40</b>	
----	------------------	----------	-----------	---	--------------	--

All original equipment manufacturers names and part numbers are used for identification purposes only, and we are in no way implying that our products are original equipment parts. Prices subject to change without notice.



# Replaces Toro Reelmaster 5410-D Parts

Traction Unit  
Reel Hydraulics



Item No	R&R Part No.	OEM Part No.	Description	Qty Req	Price Each	Order Quantity
<i>Tech Note: Fits 2006-2009:</i>						
60	<b>R108-1703</b>	108-1703	Tube Assy	1	<b>79.45</b>	
<i>Tech Note: Fits 2006-2009:</i>						
61	<b>R108-1704</b>	108-1704	Line - Hyd	1	<b>98.60</b>	
<i>Tech Note: Fits 2006-2009:</i>						
62	<b>R108-1705</b>	108-1705	Tube Assy	1	<b>97.25</b>	
63	<b>R108-1708</b>	108-1708	Tube Assy	1	<b>70.95</b>	
<i>Tech Note: Fits 2006-2009:</i>						
64	<b>R110-5286</b>	110-5286	Tube Assy	1	<b>169.70</b>	
65	<b>R110-5287</b>	110-5287	Tube Assy	1	<b>96.55</b>	
<i>Tech Note: Fits 2006-2009:</i>						
66	<b>R110-5288</b>	110-5288	Tube Assy	1	<b>80.25</b>	
67	<b>R114-8887</b>	114-8887	Tube Assy	1	<b>78.90</b>	
68	<b>R117-0137</b>	117-0137	Tube Assy	1	<b>114.35</b>	
69	<b>R117-0138</b>	117-0138	Tube Assy	1	<b>107.25</b>	
70	<b>R117-0139</b>	117-0139	Tube Assy - Hyd	1	<b>109.30</b>	
71	<b>R117-0140</b>	117-0140	Tube Assy	1	<b>86.75</b>	
72	<b>R117-0141</b>	117-0141	Tube Assy	1	<b>100.35</b>	
73	<b>R117-0142</b>	117-0142	Tube Assy	1	<b>100.35</b>	
74	<b>R117-0177</b>	117-0177	Tube Assy	1	<b>102.40</b>	

## Other Parts Available

All original equipment manufacturers names and part numbers are used for identification purposes only, and we are in no way implying that our products are original equipment parts. Prices subject to change without notice.



# Replaces Toro Reelmaster 5410-D Parts

Traction Unit  
Reel Hydraulics



Item No	R&R Part No.	OEM Part No.	Description	Qty Req	Price Each	Order Quantity
80	<b>R237-30</b>	23-6320, 237-30	O-Ring - Seal	10	<b>0.78</b>	
81	<b>R340-4</b>	340-4	Hydraulic Fitting - Male Connector	1	<b>7.95</b>	
82	<b>R237-79</b>	237-79	O-Ring	10	<b>1.50</b>	
83	<b>R120-2072</b>	100-6426, 108-6487, 112-9200, 120-2072, 93-1375	Hydraulic Gear Motor	5	<b>360.90</b>	
84	<b>R340-98</b>	340-98	Hydraulic Fitting	9	<b>15.60</b>	
85	<b>R340-132</b>	340-132	Hydraulic Fitting - 90 Deg	1	<b>14.40</b>	
86	<b>R237-21</b>	237-21, 327-21	O-Ring	1	<b>0.47</b>	
87	<b>R237-22</b>	107-8844, 237-22, 237-78	O-Ring	5	<b>0.62</b>	
88	<b>R69-8960</b>	69-8960	Spacer	5	<b>5.65</b>	
<i>Tech Note: Fits 2006-2009:</i>						
88	<b>R69-9000</b>	125-1984, 69-9000	Spacer	5	<b>8.95</b>	
<i>Tech Note: Fits 2010 &amp; Up:</i>						
89	<b>R56-7972</b>	56-7972	Clamp - Tube	2	<b>13.60</b>	
<i>Tech Note: Fits 2006-2009:</i>						
89	<b>R56-7970</b>	56-7970	Plastic Clamp	2	<b>11.25</b>	
<i>Tech Note: Fits 2010 &amp; Up:</i>						
90	<b>R240-5</b>	240-5	Grommet - Rubber	5	<b>7.90</b>	
<i>Tech Note: Fits 2006-2009:</i>						

All original equipment manufacturers names and part numbers are used for identification purposes only, and we are in no way implying that our products are original equipment parts. Prices subject to change without notice.



# Replaces Toro Reelmaster 5410-D Parts

Traction Unit  
Reel Hydraulics



Item No	R&R Part No.	OEM Part No.	Description	Qty Req	Price Each	Order Quantity
90	<b>R240-3</b>	240-3	Grommet- Rubber	5	<b>9.60</b>	
<i>Tech Note: Fits 2010 &amp; Up:</i>						
91	<b>R93-9151</b>	93-9151	Hydraulic Fitting	1	<b>25.40</b>	
<i>Tech Note: Fits 2006-2009:</i>						
91	<b>R340-72</b>	340-72, 96-0865	Fitting-Bulkhead,	1	<b>27.90</b>	
<i>Tech Note: Fits 2010 &amp; Up:</i>						
92	<b>R69-8930</b>	69-8930	Washer	6	<b>1.75</b>	
<i>Tech Note: Fits 2006-2009:</i>						
93	<b>R340-127</b>	340-127	Nut - Bulkhead	9	<b>5.95</b>	
<i>Tech Note: Fits 2006-2009:</i>						
94	<b>R104-7201</b>	104-7201	Locknut - 1/4-20 ESNA Flanged	4	<b>0.62</b>	
95	<b>R108-7585</b>	108-7585	Guide-Hose	2	<b>17.70</b>	
96	<b>R340-92</b>	340-92	Hydraulic Fitting - Striaight	1	<b>6.95</b>	
97	<b>R3229-1</b>	01-173-0406, 01-178-0408, 3229-1, 3229-25, 900015P	Bolt - 1/4-20 x 3/4 - Carriage	4	<b>2.30</b>	
98	<b>R99-8611</b>	99-8611	Spacer	4	<b>3.85</b>	
99	<b>R240-11</b>	240-11	Bushing - Rubber - Flanged	8	<b>2.45</b>	
100	<b>R105-3048</b>	105-3048	Washer - Flat	4	<b>0.95</b>	
101	<b>R32144-57</b>	32144-57	Bolt - Hex Washer 5/16-18 x 1-1/2	4	<b>1.45</b>	
102	<b>R340-78</b>	340-78	Nut - Lock Bulkhead	4	<b>2.30</b>	

All original equipment manufacturers names and part numbers are used for identification purposes only, and we are in no way implying that our products are original equipment parts. Prices subject to change without notice.



# Replaces Toro Reelmaster 5410-D Parts

*Traction Unit  
Reel Hydraulics*



Item No	R&R Part No.	OEM Part No.	Description	Qty Req	Price Each	Order Quantity
103	<b>R108-1814-03</b>	108-1814-03	Bracket-Bulkhead	2	<b>27.95</b>	
103	<b>R117-0174-03</b>	117-0174-03	Bracket-Bulkhead	2	<b>38.75</b>	
104	<b>R94-5780</b>	94-5780	Bolt - 5/16-18 x 1 3/4 Hx Fl	1	<b>2.35</b>	
105	<b>R56-7976</b>	56-7976	Clamp - Tube	2	<b>7.15</b>	
106	<b>R3234-5</b>	3234-5, 62-3310	Bolt - 5/16-18x3/4 Hx Ser Was HD	1	<b>0.74</b>	
107	<b>R2412-89</b>	2412-113, 2412-89	Clamp	1	<b>2.15</b>	
108	<b>R104-8300</b>	104-8300, 104-8300 , 119-4041	Locknut - 5/16-18 Flanged Y/Zinc	2	<b>0.47</b>	
109	<b>R56-7973</b>	56-7973	Clamp - Tube	2	<b>13.95</b>	

All original equipment manufacturers names and part numbers are used for identification purposes only, and we are in no way implying that our products are original equipment parts. Prices subject to change without notice.