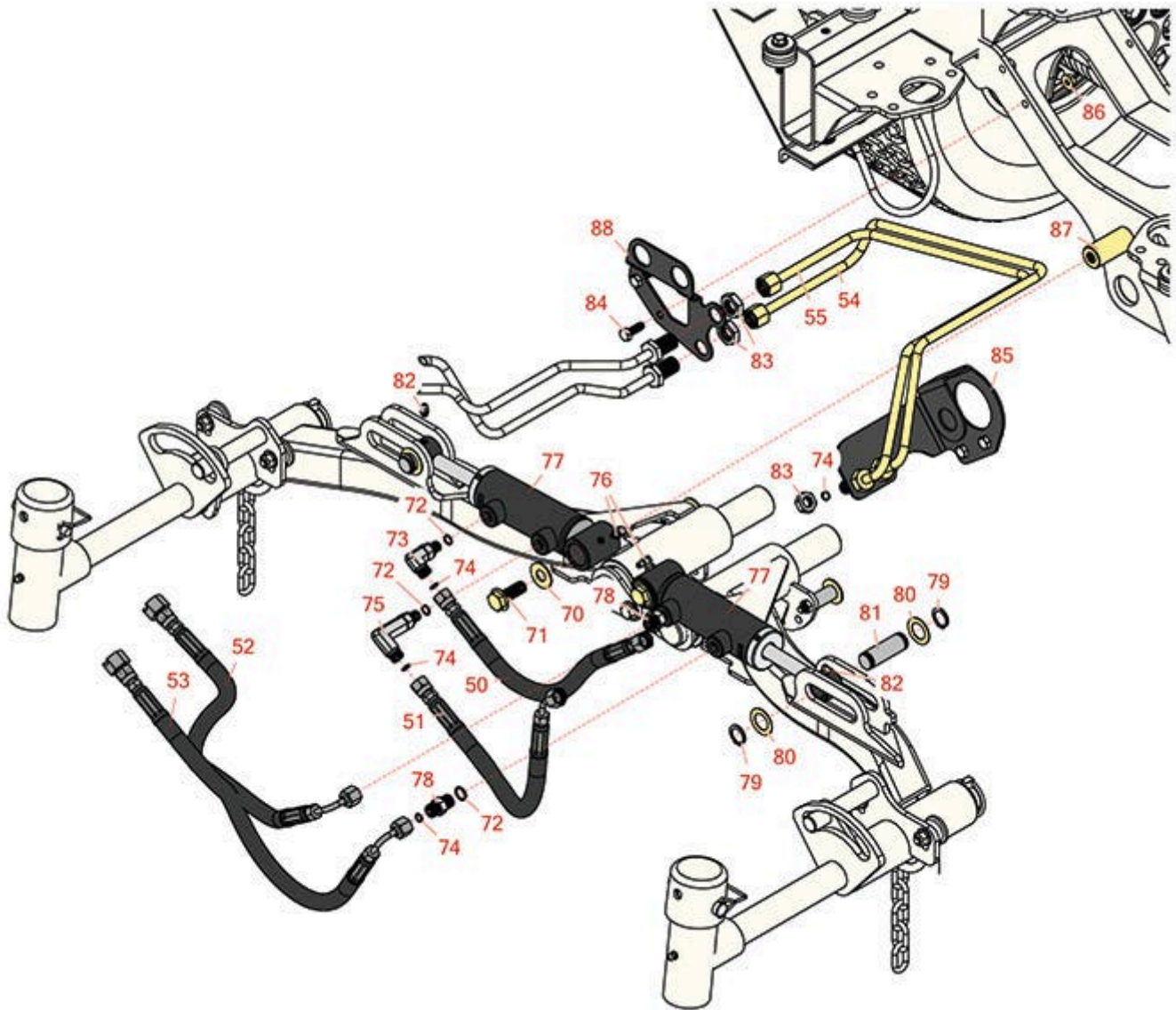




Replaces Toro Reelmaster 5410-D Parts

Traction Unit

Rear Lift Cylinder & Hydraulics



All original equipment manufacturers names and part numbers are used for identification purposes only, and we are in no way implying that our products are original equipment parts. Prices subject to change without notice.



Replaces Toro Reelmaster 5410-D Parts

Traction Unit

Rear Lift Cylinder & Hydraulics



Item No	R&R Part No.	OEM Part No.	Description	Qty Req	Price Each	Order Quantity
---------	--------------	--------------	-------------	---------	------------	----------------

Hoses

50	R110-0931	110-0931	Hydraulic Hose Assy	1	38.15	
51	R110-8966	110-8966	Hydraulic Hose Assy	1	52.10	
52	R110-0929	110-0929	Hydraulic Hose Assy	1	46.15	
53	R110-0930	110-0930, 110-2930	Hydraulic Hose Assy	1	46.15	
54	R110-0916	110-0916	Tube Assy	1	65.10	

Tech Note: Fits 2006-2009:

55	R110-0915	110-0915	Tube Assy	1	63.60	
----	------------------	----------	-----------	---	--------------	--

Tech Note: Fits 2006-2009:

Other Parts Available

70	R453017	01-166-0050, 01-166-0240, 01-166-0800, 24-13-AD, 24-14-AD, 32-8110, 3256-26, 3256-6, 453017, 69-8980, 87-7270	Washer - Flat 1/2	2	0.28	
71	R3234-32	3234-32, 3434-32	Bolt - 1/2-13 x 1 1/4 Hex Flange Bolt	2	7.60	
72	R237-22	107-8844, 237-22, 237-78	O-Ring	2	0.62	
73	R340-132	340-132	Hydraulic Fitting - 90 Deg	1	14.40	
74	R237-21	237-21, 327-21	O-Ring	4	0.47	

All original equipment manufacturers names and part numbers are used for identification purposes only, and we are in no way implying that our products are original equipment parts. Prices subject to change without notice.



Replaces Toro Reelmaster 5410-D Parts

Traction Unit

Rear Lift Cylinder & Hydraulics



Item No	R&R Part No.	OEM Part No.	Description	Qty Req	Price Each	Order Quantity
75	R100-7695	100-7695	Adapter-Hyd	1	49.15	
76	R302-60	302-60	Zerk - Grease 90 Deg.	2	0.68	
77	R107-2034	107-2034, 110-9034	Hydraulic Cylinder	2	383.85	
78	R340-92	340-92	Hydraulic Fitting - Striaight	2	6.95	
79	R32120-93	32120-93	Snap Ring - HD	4	1.20	
80	R3-6498	3--6498, 3-6498, 47-8270	Washer - Thrust	4	4.10	
81	R104-0046	104-0046	Pin - Slide - Cylinder	2	7.15	
82	R302-5	21-6010, 302-11, 302-37, 302-47, 302-5, 302-57, 302-58, 302-6, 31-0300, 32-9660, 60-0800, 62-3880, 92-4181	Fitting - Grease	2	0.27	
83	R340-78	340-78	Nut - Lock Bulkhead	4	2.30	
84	R322-4	322-4, 3290-115, 908018P	Bolt - Hex HD 5/16-18 x 7/8	4	0.47	
85	R110-0917-01	110-0917-01	Bracket-Bulkhead - LH	1	23.75	
86	R104-8300	104-8300, 104-8300 , 119-4041	Locknut - 5/16-18 Flanged Y/Zinc	4	0.47	
87	R107-2077	107-2077	Pin - Cylinder	2	28.05	

All original equipment manufacturers names and part numbers are used for identification purposes only, and we are in no way implying that our products are original equipment parts. Prices subject to change without notice.



Replaces Toro Reelmaster 5410-D Parts

Traction Unit

Rear Lift Cylinder & Hydraulics



Item No	R&R Part No.	OEM Part No.	Description	Qty Req	Price Each	Order Quantity
---------	--------------	--------------	-------------	---------	------------	----------------

Tech Note: Fits 2006-2009:

88	R110-0918-01	110-0918-01	Bracket-Bulkhead - RH	1	13.70	
----	---------------------	-------------	-----------------------	---	--------------	--

All original equipment manufacturers names and part numbers are used for identification purposes only, and we are in no way implying that our products are original equipment parts. Prices subject to change without notice.