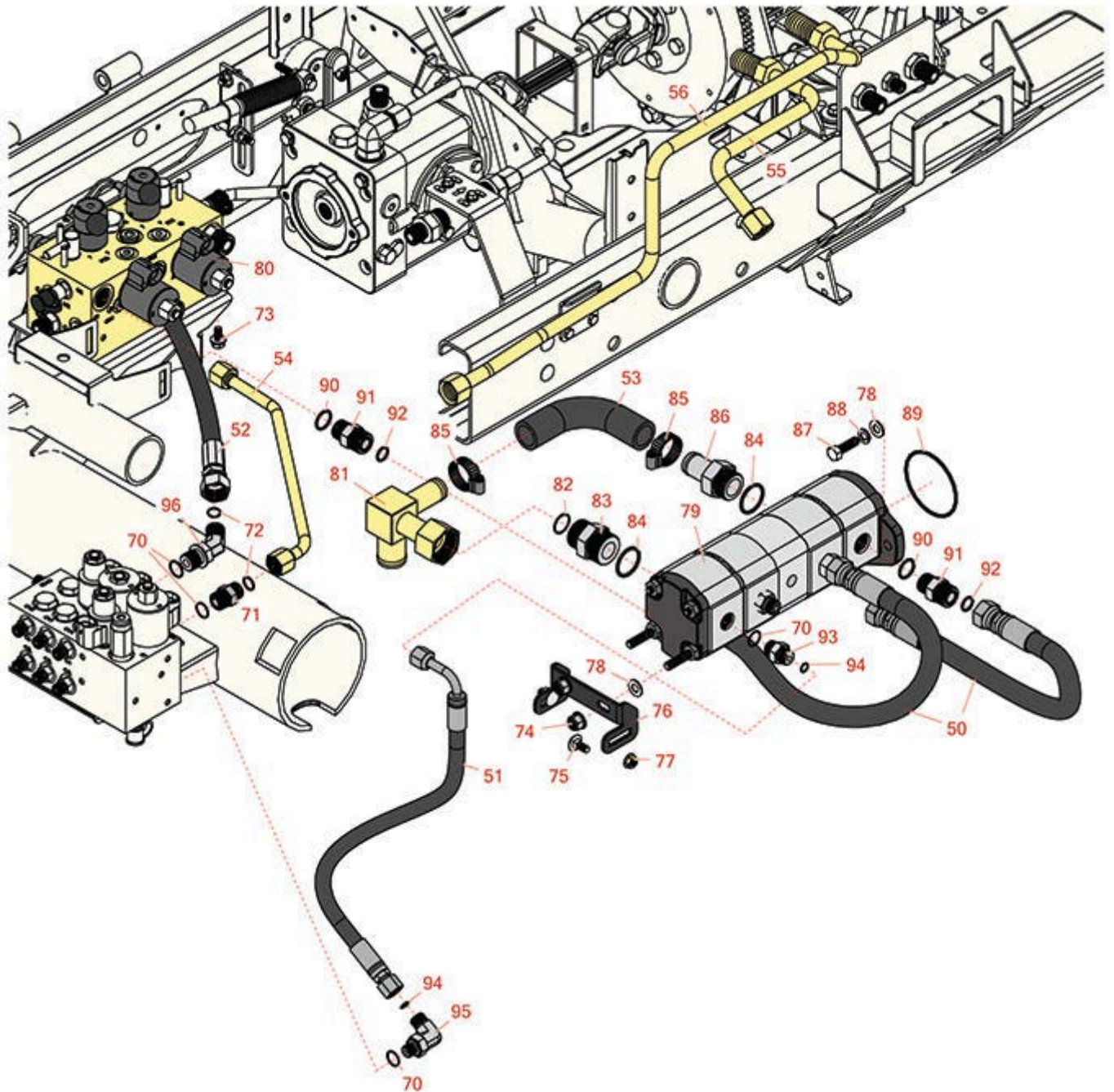




Replaces Toro Reelmaster 5410-D Parts

Traction Unit

Gear Pump & Hydraulics



All original equipment manufacturers names and part numbers are used for identification purposes only, and we are in no way implying that our products are original equipment parts. Prices subject to change without notice.



Replaces Toro Reelmaster 5410-D Parts

Traction Unit
Gear Pump & Hydraulics



Item No	R&R Part No.	OEM Part No.	Description	Qty Req	Price Each	Order Quantity
Hoses						
50	R108-1686	108-1686	Hydraulic Hose Assy	1	69.25	
51	R107-1135	107-1135	Hydraulic Hose Assy	1	57.15	
<i>Tech Note: Fits 5210-5610 2006-2009:</i>						
52	R117-0180	117-0180	Hydraulic Hose Assy	1	58.95	
53	R108-1683	108-1683	Hose - Formed	1	29.10	
54	R108-1698	108-1698	Tube Assy	1	43.20	
<i>Tech Note: Fits 5210-5610 2006-2009:</i>						
55	R117-0140	117-0140	Tube Assy	1	86.75	
56	R117-0141	117-0141	Tube Assy	1	100.35	
Other Parts Available						
70	R237-79	237-79	O-Ring	3	1.50	
71	R340-4	340-4	Hydraulic Fitting - Male Connector	1	7.95	
<i>Tech Note: Fits 5210-5610 2006-2009:</i>						
72	R237-30	23-6320, 237-30	O-Ring - Seal	1	0.78	
73	R3234-14	3234-14, 3234-23	Bolt - Hex Serrated Washer HD	2	0.83	
74	R103-9511	103-9511	Nut - Lock	2	1.20	
75	R3230-1	01-173-0506, 3230-1, 3230-20, 900037P	Bolt - Carriage 5/16-18 x 3/4	2	0.62	
76	R108-1801-01	108-1801-01	Bracket-Support - Pump	1	18.65	

All original equipment manufacturers names and part numbers are used for identification purposes only, and we are in no way implying that our products are original equipment parts. Prices subject to change without notice.



Replaces Toro Reelmaster 5410-D Parts

Traction Unit

Gear Pump & Hydraulics



Item No	R&R Part No.	OEM Part No.	Description	Qty Req	Price Each	Order Quantity
77	R104-8300	104-8300, 104-8300 , 119-4041	Locknut - 5/16-18 Flanged Y/Zinc	2	0.47	
78	R453011	01-166-0100, 01-166-0120, 01-166-0270, 01-166-0500, 01-166-0600, 01-166-0620, 132-4593, 2356-3, 237-12, 24-10-AD, 24-11-AD, 24-11-BD, 24-12-AD, 24-12-BD, 30-9310, 32-8190, 3256-24, 3256-3, 3256-36, 3256-4, 453011, 47-9950, 48-9220, 513458, 7-0052	Washer - Flat 3/8 SAE Y/Zinc	4	0.11	
79	R105-7576	105-7576	Gear Pump Assy	1	2718.25	
<i>Tech Note: Fits 5210-5410:</i>						
80	R108-1625	108-1625	Manifold Assy - Reels	1	2166.30	
81	R108-1672	108-1672	Manifold-Tube	1	146.10	
82	R340-65	340-65	O-Ring	1	0.86	
83	R104-3797	104-3797	Hydraulic Fitting - Striaight	1	19.90	
84	R237-146	237-146, 340-146	O-Ring	2	1.45	

All original equipment manufacturers names and part numbers are used for identification purposes only, and we are in no way implying that our products are original equipment parts. Prices subject to change without notice.



Replaces Toro Reelmaster 5410-D Parts

Traction Unit

Gear Pump & Hydraulics



Item No	R&R Part No.	OEM Part No.	Description	Qty Req	Price Each	Order Quantity
85	R2412-34	2412-34, 31-0120	Clamp - Hose .75-1.5	1	1.50	
86	R354-78	354-78	Connector-Hose	1	27.35	
87	R3274-1	3274-1	Bolt - 3/8-16 x 1 1/4 Soc HD Cap	2	4.95	
88	R3254-6	01-166-0010, 01-166-0280, 01-166-0610, 3253-5, 3254-18, 3254-6, 3290-223, 48-9370	Washer - Lock 3/8	2	0.08	
89	R237-161	237-161	O-Ring	1	3.65	
90	R237-80	237-80, 327-80	O-Ring	4	1.85	
91	R340-7	340-7	Adapter	4	9.65	
92	R237-65	237-65, 237.65	O-Ring	4	0.65	
93	R340-3	340-3	Hydraulic Fitting - Adapter Connector	2	8.05	
94	R237-22	107-8844, 237-22, 237-78	O-Ring	4	0.62	
95	R340-18	340-18	Hydraulic Fitting	1	20.95	
96	R340-101	340-101	Hydraulic Fitting	1	17.15	

Tech Note: Fits 5210-5610 2010 & Up:

All original equipment manufacturers names and part numbers are used for identification purposes only, and we are in no way implying that our products are original equipment parts. Prices subject to change without notice.