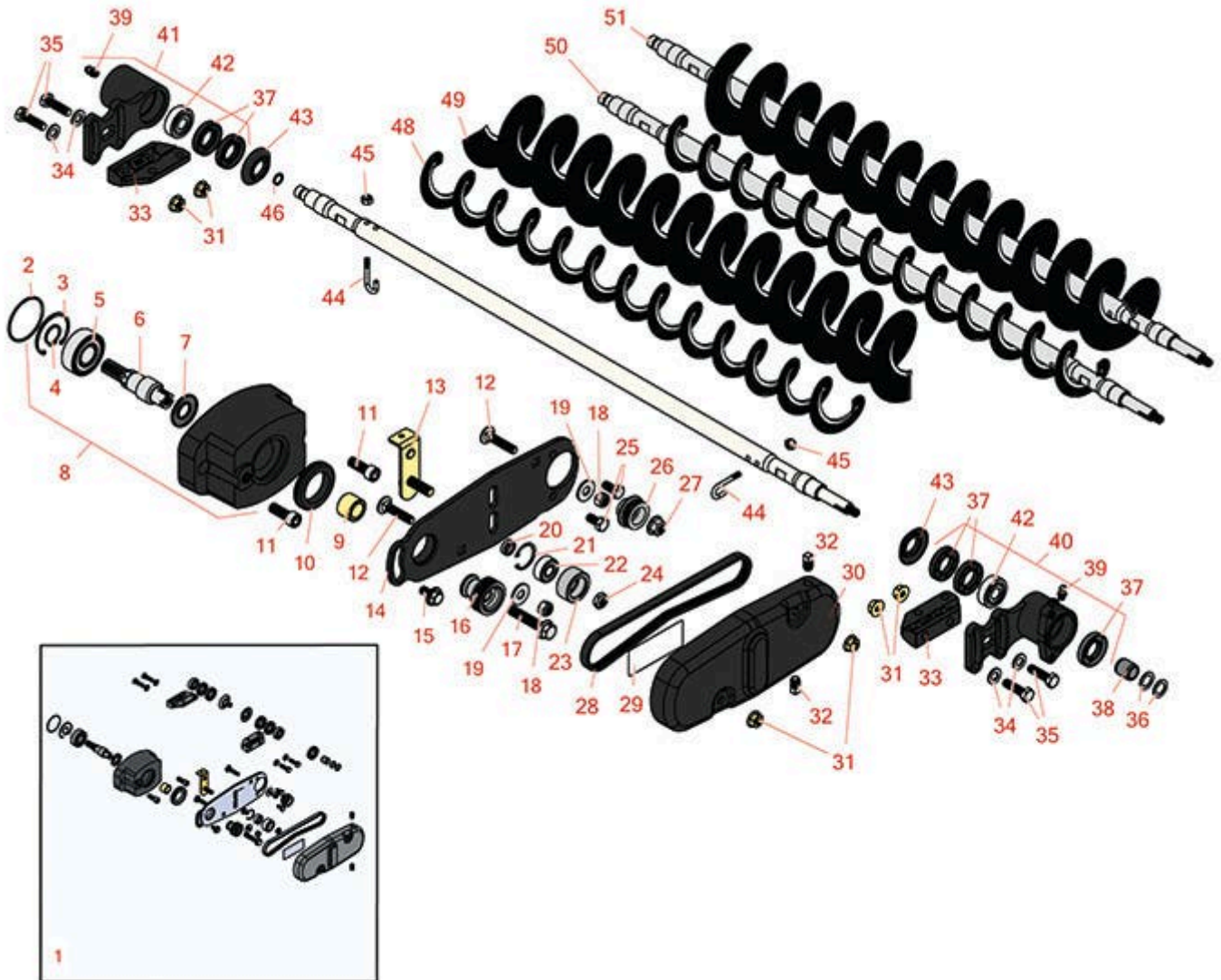




# Replaces Toro Reelmaster 5410-D Parts

DPA Cutting Unit with 5" Reel - Model 03661, 03694 & 03695

Rear Roller Brush



All original equipment manufacturers names and part numbers are used for identification purposes only, and we are in no way implying that our products are original equipment parts. Prices subject to change without notice.



# Replaces Toro Reelmaster 5410-D Parts

DPA Cutting Unit with 5" Reel - Model 03661, 03694 & 03695

Rear Roller Brush



Item No	R&R Part No.	OEM Part No.	Description	Qty Req	Price Each	Order Quantity
<b>Complete Roller Brush Kits</b>						
1	<b>R150906</b>	03663	Brush Kit - Rear Roller - Less Brush	1	<b>544.05</b>	
<i>Tech Note: R150915 or R150916 must also be added:</i>						
<b>Other Parts Available</b>						
2	<b>R112-6968</b>	112-6968	O-Ring	1	<b>1.95</b>	
3	<b>R32120-62</b>	32120-62	Ring - Retaining	1	<b>1.95</b>	
4	<b>R458013</b>	30-0580, 32120-72, 458013, 93-2525, 936125	Ring - Retaining	1	<b>0.54</b>	
5	<b>R93-2559</b>	93-2559	Bearing	1	<b>10.95</b>	
6	<b>R107-7796</b>	107-7796	Shaft - Drive	1	<b>41.95</b>	
7	<b>R107-7795</b>	107-7795	Seal - Oil	1	<b>5.45</b>	
8	<b>R108-4200</b>	108-4197, 108-4200	Bearing Housing Assy	1	<b>247.70</b>	
9	<b>R108-4477</b>	108-4477	Spacer	1	<b>10.15</b>	
10	<b>R240-7</b>	240-7	Grommet - Rubber - 2 in OD	1	<b>9.30</b>	
11	<b>R3274-7</b>	3247-7, 3274-7	Bolt - Soc HD Cap 3/8-16 x 1	2	<b>1.40</b>	
12	<b>R112-6950</b>	112-6950, 3230-27	Bolt - Carriage 5/16-18 x 1-1/2	2	<b>1.20</b>	
13	<b>R108-4478</b>	108-4478	Plate - Idler	1	<b>9.55</b>	
14	<b>R108-4176</b>	108-4176	Plate-Brush	1	<b>22.95</b>	
15	<b>R27-0411</b>	27-0411	Bolt - Shoulder	1	<b>10.45</b>	

All original equipment manufacturers names and part numbers are used for identification purposes only, and we are in no way implying that our products are original equipment parts. Prices subject to change without notice.



# Replaces Toro Reelmaster 5410-D Parts

DPA Cutting Unit with 5" Reel - Model 03661, 03694 & 03695

Rear Roller Brush



Item No	R&R Part No.	OEM Part No.	Description	Qty Req	Price Each	Order Quantity
16	<b>R110-1741</b>	110-1741	Pulley - Driver	1	<b>43.95</b>	
17	<b>R66-9302</b>	3234-20, 66-9302	Screw - HHF, Whiz	1	<b>2.85</b>	
18	<b>R3296-47</b>	3296-47	Locknut - 5/16-18 Jam Nyloc	2	<b>0.59</b>	
19	<b>R453009</b>	01-166-0400, 24-10-BD, 24-9-AD, 32-9650, 3256-2, 3256-23, 3256-3, 3256-67, 3290-217, 3556-3, 4-2390, 7-0152	Washer - Flat 5/16 SAE	2	<b>0.13</b>	
20	<b>R93-3658</b>	93-3658	Spacer - Hardened	1	<b>4.90</b>	
21	<b>R32151-60</b>	32151-60	Ring - Snap	1	<b>1.05</b>	
22	<b>R110-1701</b>	110-1701	Bearing	1	<b>12.50</b>	
23	<b>R110-1745</b>	110-1745	Bearing Assy - Idler	1	<b>47.25</b>	
24	<b>R3296-59</b>	3296-59	Locknut - 3/8-16 Nylon Jam	1	<b>0.65</b>	
25	<b>R322-2</b>	322-2, 513338P	Bolt - Hex HD 5/16-18 x 5/8	2	<b>0.50</b>	
26	<b>R110-1743</b>	110-1743	Pulley - Driven - Keyed	1	<b>41.75</b>	
<i>Tech Note: (2007 &amp; Prior):</i>						
27	<b>R104-8301</b>	104-8301, 104-9301, 109-6658, 133-7570	Locknut - 3/8-16 Nylon Flanged	1	<b>0.84</b>	
28	<b>R110-1746</b>	110-1746	Belt - Brush	1	<b>9.95</b>	

All original equipment manufacturers names and part numbers are used for identification purposes only, and we are in no way implying that our products are original equipment parts. Prices subject to change without notice.



# Replaces Toro Reelmaster 5410-D Parts

DPA Cutting Unit with 5" Reel - Model 03661, 03694 & 03695

Rear Roller Brush



Item No	R&R Part No.	OEM Part No.	Description	Qty Req	Price Each	Order Quantity
29	<b>R110-1734</b>	110-1734	Decal-Belt Tension	1	<b>7.45</b>	
30	<b>R112-6951</b>	112-6951	Cover - Belt	1	<b>116.05</b>	
31	<b>R104-8300</b>	104-8300, 104-8300, 119-4041	Locknut - 5/16-18 Flanged Y/Zinc	6	<b>0.47</b>	
32	<b>R285-17</b>	285-10, 285-17	Plug - 1/8 NPT	2	<b>2.15</b>	
33	<b>R108-4480</b>	108-4480	Bracket - Rear Roller Brush	2	<b>18.80</b>	
34	<b>R94-6936</b>	94-6936, 94-9236	Washer - Hardened - 5/16 SAE	4	<b>0.57</b>	
35	<b>R322-16</b>	322-16, Apr-00	Bolt - Hex HD 5/16-18 x 1-1/8	4	<b>1.65</b>	
36	<b>R112-6957</b>	112-6957	Washer - Hardened	2	<b>1.25</b>	
37	<b>R106-8530</b>	106-8530	Seal - Oil	5	<b>9.05</b>	
38	<b>R108-4491</b>	108-4491	Spacer - Hardened	1	<b>4.95</b>	
39	<b>R302-5</b>	21-6010, 302-11, 302-37, 302-47, 302-5, 302-57, 302-58, 302-6, 31-0300, 32-9660, 60-0800, 62-3880, 92-4181	Fitting - Grease	2	<b>0.27</b>	
40	<b>R108-4206</b>	108-4206	Bearing Housing Assy - Driven	1	<b>184.15</b>	
41	<b>R108-4207</b>	108-4207	Bearing Housing Assy - Non Driven	1	<b>168.80</b>	
42	<b>R95-0707</b>	95-0707	Bearing - Self Aligning	2	<b>24.85</b>	

All original equipment manufacturers names and part numbers are used for identification purposes only, and we are in no way implying that our products are original equipment parts. Prices subject to change without notice.



# Replaces Toro Reelmaster 5410-D Parts

DPA Cutting Unit with 5" Reel - Model 03661, 03694 & 03695

Rear Roller Brush



Item No	R&R Part No.	OEM Part No.	Description	Qty Req	Price Each	Order Quantity
43	<b>R108-4172</b>	108-4172	Seal - Excluder	2	<b>5.15</b>	
44	<b>R105-9632</b>	105-9632	Bolt - J	2	<b>7.50</b>	
45	<b>R3296-2</b>	32127-10, 3296-2, 9157404	Nut - #10 Lock	2	<b>0.94</b>	
46	<b>R237-22</b>	107-8844, 237-22, 237-78	O-Ring	1	<b>0.62</b>	
48	<b>R108-4193</b>	108-4193	Brush - Roller - 2 OD	1	<b>56.05</b>	
49	<b>R110-1740</b>	110-1740	Brush-Roller (High HOC) 3.5 in OD	1	<b>55.90</b>	
50	<b>R150915</b>	108-4190	Shaft Assy - Rear Roller Brush - 2 in Keyed	1	<b>198.70</b>	
51	<b>R150916</b>		Shaft Assy - Rear Roller Brush 3.5 in - Keyed	1	<b>198.70</b>	

All original equipment manufacturers names and part numbers are used for identification purposes only, and we are in no way implying that our products are original equipment parts. Prices subject to change without notice.