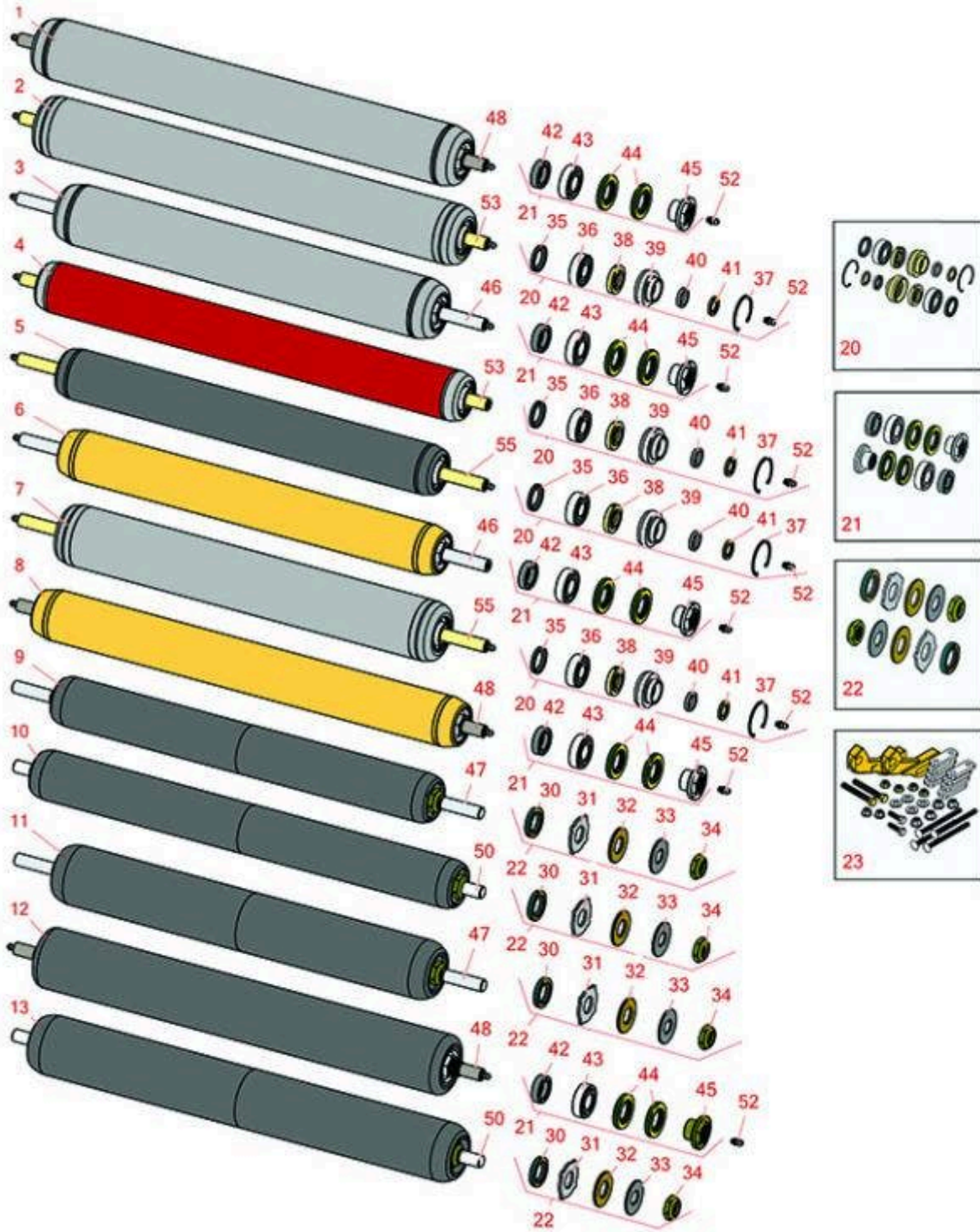




Replaces Toro Reelmaster 5410-D Parts

DPA Cutting Unit with 5" Reel - Model 03661, 03694 & 03695

Rear Rollers



All original equipment manufacturers names and part numbers are used for identification purposes only, and we are in no way implying that our products are original equipment parts. Prices subject to change without notice.



Replaces Toro Reelmaster 5410-D Parts

DPA Cutting Unit with 5" Reel - Model 03661, 03694 &

03695

Rear Rollers



Item No	R&R Part No.	OEM Part No.	Description	Qty Req	Price Each	Order Quantity
1	R114-5415	114-5415	Roller - Smooth Tubular Steel	0	255.90	
<i>Tech Note: Constructed with a through shaft, this heavy duty roller uses greasable stainless ball bearings. (2008 & Up):</i>						
2	R107-4024	107-4024	Smooth Tubular Steel Roller - Long	0	258.35	
<i>Tech Note: Constructed with a through shaft, this heavy-duty roller uses greasable ball bearings. (2006 - 2007):</i>						
3	R114-5417	114-5417	Roller - Smooth Solid Steel	0	255.05	
<i>Tech Note: Constructed with a through shaft, this heavy-duty roller uses greasable stainless ball bearings. (2008 & Up):</i>						
4	R107-4040	107-4040	Roller - Smooth Tubular Steel	0	253.50	
<i>Tech Note: Constructed with a through shaft, this heavy-duty roller uses greasable ball bearings. (2006 - 2007):</i>						
5	R110-4066	110-4066	Roller - Smooth Tubular Steel	0	255.40	
<i>Tech Note: Constructed with a through shaft, this heavy-duty roller uses greasable ball bearings. (2006 - 2007):</i>						
6	R114-5406	114-5406	Roller - Smooth Tubular Steel - Short	0	252.85	
<i>Tech Note: Constructed with a through shaft, this heavy-duty roller uses greasable stainless ball bearings. (2008 & Up):</i>						
7	R110-4065	110-4065	Roller - Smooth Tubular Steel	0	257.75	
<i>Tech Note: Constructed with a through shaft, this heavy-duty roller uses greasable ball bearings. (2006 - 2007):</i>						
8	R114-5404	114-5404, 137-6107	Roller - Smooth Tubular Steel - Long	0	171.05	

All original equipment manufacturers names and part numbers are used for identification purposes only, and we are in no way implying that our products are original equipment parts. Prices subject to change without notice.



Replaces Toro Reelmaster 5410-D Parts

DPA Cutting Unit with 5" Reel - Model 03661, 03694 & 03695

Rear Rollers



Item No	R&R Part No.	OEM Part No.	Description	Qty Req	Price Each	Order Quantity
---------	--------------	--------------	-------------	---------	------------	----------------

Tech Note: Constructed with a through shaft, this heavy-duty roller uses greasable stainless ball bearings. (2006 - 2007):

9	R1503935		Roller - Smooth UHMW Polyethylene	0	233.35	
---	-----------------	--	-----------------------------------	---	---------------	--

Tech Note: Machined from solid UHMW, this low maintenance roller uses a 1" solid stainless steel shaft and requires no grease. UHMW material prevents build-up of debris. (2006 & Up):

10	R1503943		Roller - Smooth UHMW Polyethylene	0	238.40	
----	-----------------	--	-----------------------------------	---	---------------	--

Tech Note: Machined from solid UHMW, this low maintenance roller uses a 1" solid stainless steel shaft and requires no grease. UHMW material prevents build-up of debris. (2006 & Up):

11	R1503940	1503940	Roller - Smooth UHMW Polyethylene	0	243.45	
----	-----------------	---------	-----------------------------------	---	---------------	--

Tech Note: Machined from solid UHMW, this low maintenance roller uses a 1" solid stainless steel shaft and requires no grease. UHMW material prevents build-up of debris. (2006 & Up):

12	R1503916		Roller - Fusion Smooth UHMW Polyethylene	0	312.70	
----	-----------------	--	--	---	---------------	--

Tech Note: Fusion Rollers combine the best features of our UHMW plastic rollers with a heavy duty internal bearing system. Machined from solid UHMW plastic that prevents build-up of debris. This roller has stainless precision ball bearings ... <Click Part# for more>:

13	R1503946		Roller - Smooth UHMW Polyethylene	0	248.55	
----	-----------------	--	-----------------------------------	---	---------------	--

Tech Note: Machined from solid UHMW, this low maintenance roller uses a 1" solid stainless steel shaft and requires no grease. UHMW material prevents build-up of debris. (2006 & Up):

Overhaul Kits

20	R106-9606	106-9606	Overhaul Kit - Roller	1	83.15	
----	------------------	----------	-----------------------	---	--------------	--

Tech Note: Include 2 ea: R343667 Bearings, R253-70 Seals, R32120-62 Retaining Rings, R93-1251 Seals, R93-1252 Seals, R93-2931 Washers, R93-3007 Seals:

21	R114-5430	114-5430	Overhaul Kit - Roller	1	82.40	
----	------------------	----------	-----------------------	---	--------------	--

All original equipment manufacturers names and part numbers are used for identification purposes only, and we are in no way implying that our products are original equipment parts. Prices subject to change without notice.



Replaces Toro Reelmaster 5410-D Parts

DPA Cutting Unit with 5" Reel - Model 03661, 03694 & 03695

Rear Rollers



Item No	R&R Part No.	OEM Part No.	Description	Qty Req	Price Each	Order Quantity
<i>Tech Note: Includes 4 ea.: R112-7494 Seals; 2 ea.: R302-5 Grease Zerks, R114-3717 Seals, R112-5290 Bearings & R114-3745 Locknuts:</i>						
22	R101399		Overhaul Kit - UHMW 2 Pc Roller	1	41.15	
<i>Tech Note: Fits all R&R 2-1/2" - 3-1/2" Dia. Black UHMW Plastic Rollers that do not use ball bearings.. Includes 2 ea.: R1503230 Star Washers, R1503470 Seals, R150333 Thrust Washers, R3296-15 Locknuts, R1503471 Bronze Thrust Washers:</i>						
23	R110-9600	110-9600	High HOC Kit	1	162.75	
<i>Tech Note: Includes 1 ea.: R120-0404, R120-0405 & 2 ea.: R112-7451, R322-16, R445722 & 4 ea.: R106-9758, R104-8300, R453011, R104-8301 & 8 ea.: R106-3925:</i>						
Other Parts Available						
30	R1503470		Seal - Inner Wiper	2	5.85	
31	R1503230		Washer - Thrust Outer Keyed	2	6.05	
32	R1503471		Washer - Thrust SAE660 Bronze	2	4.20	
33	R150333		Washer - Flat Keyed Outer SS	2	5.15	
34	R3296-15	116-7306, 32118-5, 32127-23, 32127-47, 3296-15	Locknut - 3/4-16 Nylon Jam	2	2.15	
35	R93-3007	93-3007	Seal	4	3.55	
36	R343667	109966, 251-6, 38-7820	Bearing - Ball	4	9.05	
37	R32120-62	32120-62	Ring - Retaining	2	1.95	
38	R93-1251	93-1251	Seal	2	7.25	
39	R93-1252	93-1252	Seal - Outer	2	13.95	

All original equipment manufacturers names and part numbers are used for identification purposes only, and we are in no way implying that our products are original equipment parts. Prices subject to change without notice.



Replaces Toro Reelmaster 5410-D Parts

DPA Cutting Unit with 5" Reel - Model 03661, 03694 & 03695

Rear Rollers



Item No	R&R Part No.	OEM Part No.	Description	Qty Req	Price Each	Order Quantity
40	R253-70	253-70	Seal	2	4.95	
41	R93-2931	93-2931	Washer - Roller Seal	2	2.55	
42	R114-3717	114-3717	Seal	2	2.35	
43	R112-5290	112-5290, 251--346, 251-346, 72-5430	Bearing - Stainless	2	10.30	
44	R112-7494	112-7494	Seal	4	5.15	
45	R114-3745	114-3745, 114-5411	Locknut - Bearing - Stainless	2	19.15	
46	R114-5410	114-5410	Shaft - Short - Rear Roller	1	58.75	
<i>Tech Note: 2008 & Newer:</i>						
47	R1503938		Shaft - Short Rear Rollers	1	67.05	
48	R114-5407	114-5407	Shaft - Long Rear Roller	1	58.75	
50	R1503949		Shaft - Long Rear Rollers	1	64.45	
52	R302-5	21-6010, 302-11, 302-37, 302-47, 302-5, 302-57, 302-58, 302-6, 31-0300, 32-9660, 60-0800, 62-3880, 92-4181	Fitting - Grease	2	0.27	
53	R107-3296	107-3296, 99-5717	Shaft - Rear Long Roller	1	57.90	
55	R110-4060	110-4060	Shaft	1	66.30	

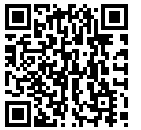
All original equipment manufacturers names and part numbers are used for identification purposes only, and we are in no way implying that our products are original equipment parts. Prices subject to change without notice.



Replaces Toro Reelmaster 5410-D Parts

*DPA Cutting Unit with 5" Reel - Model 03661, 03694 &
03695*

Rear Rollers



All original equipment manufacturers names and part numbers are used for identification purposes only, and we are in no way implying that our products are original equipment parts. Prices subject to change without notice.