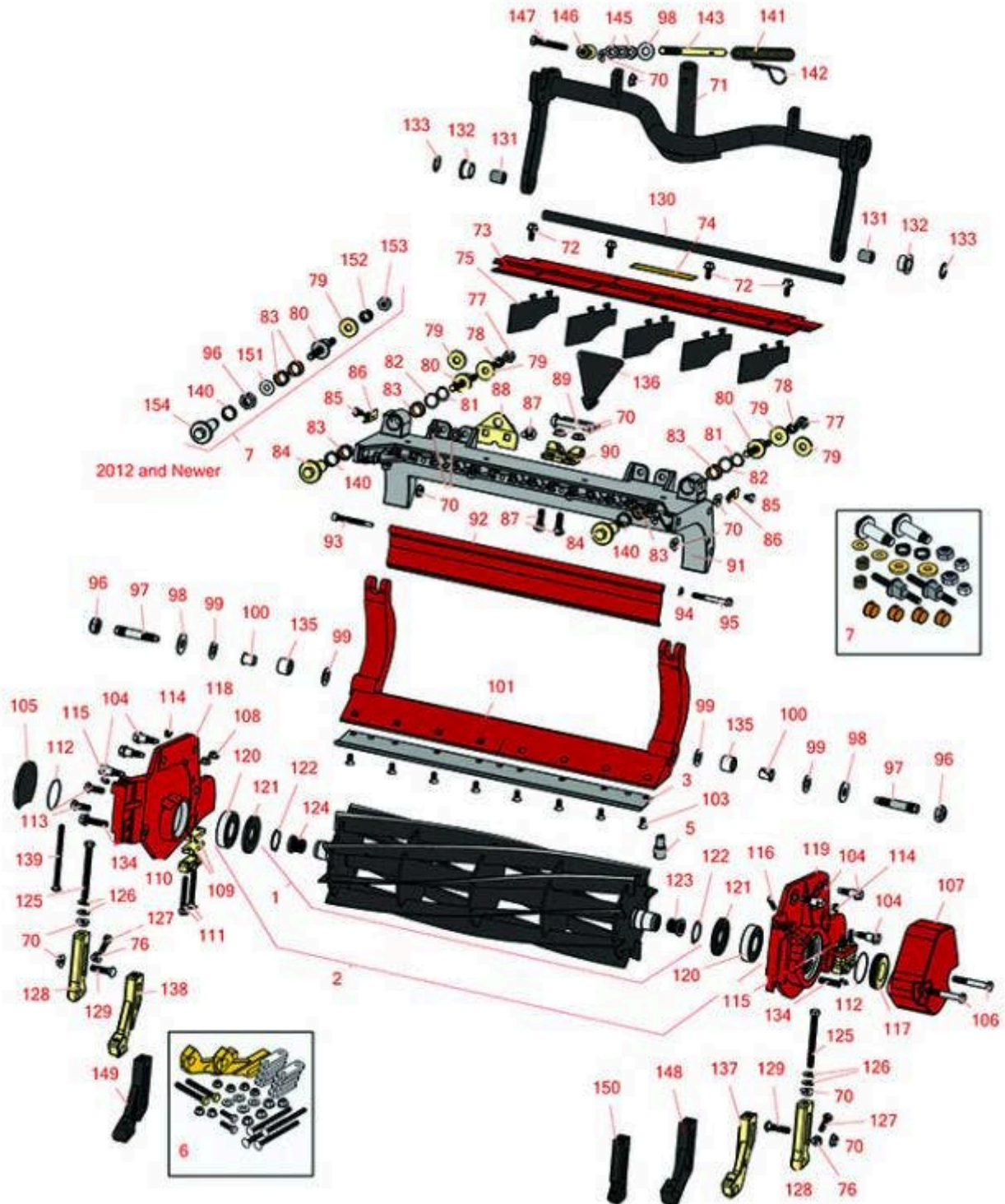




# Replaces Toro Reelmaster 5410-D Parts

DPA Cutting Unit with 7" Reel - Models 03681, 03682, 03696 & 03697

Reel & Bedknife



All original equipment manufacturers names and part numbers are used for identification purposes only, and we are in no way implying that our products are original equipment parts. Prices subject to change without notice.



# Replaces Toro Reelmaster 5410-D Parts

DPA Cutting Unit with 7" Reel - Models 03681, 03682, 03696 & 03697

Reel & Bedknife



Item No	R&R Part No.	OEM Part No.	Description	Qty Req	Price Each	Order Quantity
<b>R&amp;R Reels, Lifetime Guaranteed</b>						
1	<b>R127-2077</b>	127-2077	Reel - 5 Blade Radial 22x7	1	<b>334.80</b>	
<i>Tech Note: Use W/Painted Endplates Only:</i>						
1	<b>R133-8209</b>	133-8209	Reel - 5 Blade Razor Series Radial Low Drag 22x7	1	<b>372.80</b>	
<i>Tech Note: Uses special high alloy premium steel reel blades &amp; Painted Endplates:</i>						
1	<b>R107-3264</b>	107-3264	Reel - 8 Blade 22x7	1	<b>363.55</b>	
<i>Tech Note: W/Positive Blade Rake Angle Use W/Painted Endplates Only:</i>						
1	<b>R108-9073</b>	108-9073	Reel - 8 Blade Radial 22x7	1	<b>363.55</b>	
<i>Tech Note: W/Negative Blade Rake Angle &amp; Use W/Painted Endplates Only:</i>						
1	<b>R127-2084</b>	127-2084	Reel - 8 Blade Radial Low Drag 22x7	1	<b>363.20</b>	
<i>Tech Note: Use W/Painted Endplates Only:</i>						
1	<b>R117-0980</b>	117-0980	Reel - 11 Blade 22x7	1	<b>390.85</b>	
<i>Tech Note: W/Positive Blade Rake Angle and Use W/Painted Endplates Only:</i>						
1	<b>R108-9074</b>	108-9074	Reel - 11 Blade 22x7	1	<b>390.85</b>	
<i>Tech Note: W/Negative Blade Rake Angle and Use W/Painted Endplates Only:</i>						
1	<b>R127-2085</b>	127-2085	Reel - 11 Blade Radial Low Drag 22x7	1	<b>388.95</b>	
<i>Tech Note: Use W/Painted Endplates Only:</i>						
1	<b>R127-0294</b>	127-0294	Reel - 11 Blade Razor Series Forward Swept Low Drag 22x7	1	<b>423.75</b>	
<i>Tech Note: Uses special high alloy premium steel reel blades &amp; Painted Endplates:</i>						

All original equipment manufacturers names and part numbers are used for identification purposes only, and we are in no way implying that our products are original equipment parts. Prices subject to change without notice.



# Replaces Toro Reelmaster 5410-D Parts

DPA Cutting Unit with 7" Reel - Models 03681, 03682, 03696 & 03697

Reel & Bedknife



Item No	R&R Part No.	OEM Part No.	Description	Qty Req	Price Each	Order Quantity
2	<b>R137-8437</b>	137-8437	Reel - 5 Blade Razor Series Radial Low Drag w/Bearings and Seals 22x7	1	<b>418.90</b>	

*Tech Note: Uses special high alloy premium steel reel blades & Painted Endplates:*

2	<b>R137-8432</b>	137-8432	Reel - 8 Blade Radial w/Bearings and Seals 22x7	1	<b>422.60</b>	
---	------------------	----------	---	---	---------------	--

*Tech Note: Use W/Painted Endplates Only:*

2	<b>R137-8438</b>	137-8438	Reel - 8 Blade Razor Series Radial Low Drag w/Bearings and Seals 22x7	1	<b>445.80</b>	
---	------------------	----------	---	---	---------------	--

*Tech Note: Uses special high alloy premium steel reel blades & Painted Endplates:*

2	<b>R133-8211</b>	133-8211	Reel - 8 Blade Razor Series Radial w/Bearings and Seals 22x7	1	<b>445.90</b>	
---	------------------	----------	--	---	---------------	--

*Tech Note: Uses special high alloy premium steel reel blades & Painted Endplates:*

2	<b>R137-8433</b>	137-8433	Reel - 11 Blade Radial w/Bearings and Seals 22x7	1	<b>448.50</b>	
---	------------------	----------	--	---	---------------	--

*Tech Note: Use W/ Painted Endplates:*

2	<b>R137-8439</b>	137-8439	Reel - 11 Blade Razor Series Forward Swept Low Drag w/Bearings and Seals 22x7	1	<b>471.50</b>	
---	------------------	----------	---	---	---------------	--

*Tech Note: Uses special high alloy premium steel reel blades & Painted Endplates:*

## **R&R Bedknives, Lifetime Guaranteed**

3	<b>R108-9096</b>	108-9096	Bedknife - Standard	1	<b>44.65</b>	
3	<b>R110-4084</b>	110-4084	Bedknife - Low Cut	1	<b>44.75</b>	
3	<b>R120-1640</b>	120-1640	Bedknife - Low Cut Extended	1	<b>46.90</b>	
3	<b>R110-4074</b>	110-4074	Bedknife - High Cut	1	<b>44.55</b>	

All original equipment manufacturers names and part numbers are used for identification purposes only, and we are in no way implying that our products are original equipment parts. Prices subject to change without notice.



# Replaces Toro Reelmaster 5410-D Parts

DPA Cutting Unit with 7" Reel - Models 03681, 03682, 03696 & 03697

Reel & Bedknife



Item No	R&R Part No.	OEM Part No.	Description	Qty Req	Price Each	Order Quantity
<b>R&amp;R Razor Tool Steel Bedknives, Lifetime Guaranteed</b>						
3	<b>R108-9095</b>	108-9095, 137-0833	Bedknife - Razor Tool Steel - 22 High Cut	1	<b>97.55</b>	
3	<b>R119-4280</b>	119-4280	Bedknife - Razor Tool Steel - 22 x 3/8 Extended	1	<b>99.75</b>	
<b>Overhaul Kits &amp; Service Tools</b>						
5	<b>R51-0880</b>	51-0880	Bedknife Screw Driver Tool	0	<b>35.65</b>	
6	<b>R110-9600</b>	110-9600	High HOC Kit	1	<b>162.75</b>	
<i>Tech Note: Includes 1 ea.: R120-0404, R120-0405 &amp; 2 ea: R112-7451, R322-16, R445722 &amp; 4 ea.: R106-9758, R104-8300, R453011, R104-8301 &amp; 8 ea: R106-3925:</i>						
7	<b>R120-7230</b>	120-7230	Overhaul Kit - Fits DPA Units	1	<b>180.50</b>	
<i>Tech Note: Incl 2 ea.: R108-0015, R115-7039, R119-4155, R120-5116, R120-5118, R120-5120, R3296-33, R3296-48 &amp; 4 ea: R106-5344:</i>						
<b>Other Parts Available</b>						
70	<b>R32128-43</b>	30-8990, 32128-43, 3290-357	Nut - Flanged Whiz - 3/8-16	7	<b>0.62</b>	
71	<b>R107-7433</b>	107-7433	Carrier Frame Assy	1	<b>262.35</b>	
72	<b>R3234-5</b>	3234-5, 62-3310	Bolt - 5/16-18x3/4 Hx Ser Was HD	4	<b>0.74</b>	
73	<b>R107-2996</b>	107-2996	Grass Shield - Front	1	<b>29.40</b>	
74	<b>R93-6688</b>	93-6688	Decal - Warning	1	<b>2.30</b>	
75	<b>R110-1706</b>	110-1706	Deflector	5	<b>3.40</b>	

All original equipment manufacturers names and part numbers are used for identification purposes only, and we are in no way implying that our products are original equipment parts. Prices subject to change without notice.



# Replaces Toro Reelmaster 5410-D Parts

DPA Cutting Unit with 7" Reel - Models 03681, 03682, 03696 & 03697

Reel & Bedknife



Item No	R&R Part No.	OEM Part No.	Description	Qty Req	Price Each	Order Quantity
76	<b>R445722</b>	30-8980, 32128-2, 32128-20, 32128-20 , 445722	Nut - Serrated Washer	4	<b>0.66</b>	
77	<b>R33025-00</b>	32025-00, 33025-00	Locknut - 10mm x 1.5 Jam	2	<b>0.54</b>	
78	<b>R99-3755</b>	99-3755	Spring - Bed Bar Adjusting	2	<b>3.55</b>	
79	<b>R99-2098</b>	99-2098	Washer - Bed Bar Adjuster	2	<b>2.10</b>	
<i>Tech Note: Up to 2012:</i>						
79	<b>R119-4155</b>	119-4155	Washer - Hardened	2	<b>7.50</b>	
<i>Tech Note: 2012 &amp; Newer:</i>						
80	<b>R99-2096</b>	99-2096	Screw - Bed Bar Adjustment - M10 Thrd 1 End	2	<b>34.55</b>	
<i>Tech Note: Up to 2012:</i>						
80	<b>R115-7039</b>	115-7039	Screw - Adjuster - Bedbar	2	<b>29.85</b>	
<i>Tech Note: 2012 &amp; Newer:</i>						
81	<b>R32120-93</b>	32120-93	Snap Ring - HD	2	<b>1.20</b>	
82	<b>R106-5335</b>	106-5335	Wave Washer - Reel Adjusting	2	<b>2.50</b>	
83	<b>R106-5344</b>	106-5344	Bushing - Flanged and Keyed	4	<b>5.05</b>	
84	<b>R106-5363</b>	106-5363	Shaft - Adjusting - Bed Bar - Stainless	2	<b>27.30</b>	
<i>Tech Note: Up to 2012:</i>						
85	<b>R114-9396</b>	114-9396, 119-4067	Bolt - Hex HD 5/16-18 x 3/8	2	<b>1.45</b>	
86	<b>R99-2097</b>	99-2097	Detent - Bed Bar Adjuster	2	<b>8.75</b>	

All original equipment manufacturers names and part numbers are used for identification purposes only, and we are in no way implying that our products are original equipment parts. Prices subject to change without notice.



# Replaces Toro Reelmaster 5410-D Parts

DPA Cutting Unit with 7" Reel - Models 03681, 03682, 03696  
& 03697

Reel & Bedknife



Item No	R&R Part No.	OEM Part No.	Description	Qty Req	Price Each	Order Quantity
87	<b>R3231-25</b>	01-173-0610, 30-9970, 3231-25, 3231-3, 900064P	Bolt - Carriage 3/8-16 x 1-1/4	4	<b>0.66</b>	
88	<b>R110-4069</b>	110-4069	Bracket	1	<b>7.05</b>	
89	<b>R107-7400</b>	107-7400	Pin - Lynch	1	<b>6.95</b>	
90	<b>R110-4058</b>	110-4058	Bracket - Chain	1	<b>19.40</b>	
91	<b>R107-3258</b>	107-3258	Frame	1	<b>191.95</b>	
92	<b>R107-7779-01</b>	107-7779-01	Grass Shield Assy - Rear	1	<b>58.25</b>	
93	<b>R107-7773</b>	107-7773	Bolt - Soc HD Cap 5/16-18 x 2-1/2	1	<b>7.50</b>	
94	<b>R3256-74</b>	3256-74	Washer - Flat	1	<b>0.65</b>	
95	<b>R322-14</b>	01-150-0830, 01-178-0524, 30-8900, 322-14	Bolt - Hex HD 5/16-18 x 3 GR5	1	<b>2.15</b>	
96	<b>R3296-33</b>	3296-33	Locknut - 5/8-18 ESNA Jam	2	<b>1.30</b>	
97	<b>R106-9623</b>	106-9623	Bolt - Bedbar	2	<b>14.15</b>	
98	<b>R453017</b>	01-166-0050, 01-166-0240, 01-166-0800, 24-13-AD, 24-14-AD, 32-8110, 3256-26, 3256-6, 453017, 69-8980, 87-7270	Washer - Flat 1/2	2	<b>0.28</b>	
99	<b>R61-1950</b>	61-1950	Washer - Nylon - Bed Bar	4	<b>0.64</b>	
100	<b>R56-9520</b>	56-9520	Bushing - Nyliner	2	<b>1.55</b>	

All original equipment manufacturers names and part numbers are used for identification purposes only, and we are in no way implying that our products are original equipment parts. Prices subject to change without notice.



# Replaces Toro Reelmaster 5410-D Parts

DPA Cutting Unit with 7" Reel - Models 03681, 03682, 03696  
& 03697

Reel & Bedknife



Item No	R&R Part No.	OEM Part No.	Description	Qty Req	Price Each	Order Quantity
101	<b>R107-3273-01</b>	107-3273-01	Bed Bar - Fits OEM Units Only	1	<b>186.55</b>	
101	<b>R150904</b>		Bed Bar - Fits R&R Units Only	1	<b>205.95</b>	
103	<b>R150476</b>	3-3816, 3-6462, 52-4910, 57-4910	Screw - Bedknife 5/16-18 x 5/8	8	<b>0.29</b>	
104	<b>R107-2979</b>	107-2979	Bolt - Shoulder	6	<b>3.25</b>	
105	<b>R94-2703</b>	94-2703	Plug - Plastic Spindle Housing	1	<b>2.05</b>	
106	<b>R101526</b>	01-150-0970, 01-178-0620, 101526, 20-53-AGD, 321-11, 3224-8, 323-11, 323-12, 323-31, 323-4, 323-47	Bolt - Hex HD 3/8-16 x 2-1/2 GR5	2	<b>0.91</b>	
107	<b>R108-4269-01</b>	108-4269-01	Weight	1	<b>82.65</b>	
108	<b>R104-8300</b>	104-8300, 104-8300 , 119-4041	Locknut - 5/16-18 Flanged Y/Zinc	4	<b>0.47</b>	
109	<b>R106-3925</b>	106-3925	Shim - 1/4 - Rear Roller HOC	4	<b>4.50</b>	
110	<b>R106-3924</b>	106-3924	Bracket - Rear Roller	2	<b>15.70</b>	
111	<b>RP17609-2</b>	106-9758, 3230-7	Bolt - Carriage 5/16-18 x 1-1/2	4	<b>0.46</b>	
112	<b>R112-6967</b>	112-6967	O-Ring	2	<b>1.95</b>	

All original equipment manufacturers names and part numbers are used for identification purposes only, and we are in no way implying that our products are original equipment parts. Prices subject to change without notice.



# Replaces Toro Reelmaster 5410-D Parts

DPA Cutting Unit with 7" Reel - Models 03681, 03682, 03696  
& 03697

Reel & Bedknife



Item No	R&R Part No.	OEM Part No.	Description	Qty Req	Price Each	Order Quantity
113	<b>R323-6</b>	01-150-0010, 01-178-0608, 20-47-AD, 20-47-AGD, 3224-2, 323-6, 49-3510, 908034P, 908332	Bolt - Hex HD 3/8-16 x 1 GR5 YZ	2	<b>0.59</b>	
114	<b>R170714</b>	302-34, 302-39, 62-3520	Fitting - Pressure Relief	2	<b>2.25</b>	
115	<b>R302-5</b>	21-6010, 302-11, 302-37, 302-47, 302-5, 302-57, 302-58, 302-6, 31-0300, 32-9660, 60-0800, 62-3880, 92-4181	Fitting - Grease	2	<b>0.27</b>	
116	<b>R107-7447</b>	107-7447	Set Screw - 1/4 x 1-1/4 Sq HD	1	<b>0.81</b>	
117	<b>R107-2954</b>	107-2954	Nut - Bearing Adjuster	1	<b>11.50</b>	
118	<b>R108-9083</b>	108-9083	Side Plate - RH - Fits OEM Units Only	1	<b>192.80</b>	
118	<b>R150903</b>		Side Plate - RH - Fits R&R Units Only	1	<b>207.45</b>	
119	<b>R108-9082</b>	108-9082	Side Plate - LH - Fits OEM Units Only	1	<b>192.70</b>	
119	<b>R150902</b>		Side Plate - LH - Fits R&R Units Only	1	<b>207.30</b>	
120	<b>R93-2489</b>	93-2489	Bearing - Reel	2	<b>21.20</b>	

All original equipment manufacturers names and part numbers are used for identification purposes only, and we are in no way implying that our products are original equipment parts. Prices subject to change without notice.





# Replaces Toro Reelmaster 5410-D Parts

DPA Cutting Unit with 7" Reel - Models 03681, 03682, 03696  
& 03697

Reel & Bedknife



Item No	R&R Part No.	OEM Part No.	Description	Qty Req	Price Each	Order Quantity
121	<b>R107-4028</b>	105-6757, 107-4028	Seal - Grease	2	<b>16.05</b>	
122	<b>R92-2601</b>	92-2601	Snap Ring	2	<b>2.45</b>	
123	<b>R107-3276</b>	107-3276	Insert - Threaded - LH - 9 Tooth	1	<b>17.85</b>	
124	<b>R107-3275</b>	107-3275	Insert - Threaded - RH - 9 Tooth	1	<b>17.85</b>	
125	<b>R107-4026</b>	107-4026	Bolt - Hex Tap 3/8-16 x 3-3/4	2	<b>6.25</b>	
126	<b>R453011</b>	01-166-0100, 01-166-0120, 01-166-0270, 01-166-0500, 01-166-0600, 01-166-0620, 132-4593, 2356-3, 237-12, 24-10-AD, 24-11-AD, 24-11-BD, 24-12-AD, 24-12-BD, 30-9310, 32-8190, 3256-24, 3256-3, 3256-36, 3256-4, 453011, 47-9950, 48-9220, 513458, 7-0052	Washer - Flat 3/8 SAE Y/Zinc	4	<b>0.11</b>	
127	<b>R322-16</b>	322-16, Apr-00	Bolt - Hex HD 5/16-18 x 1-1/8	2	<b>1.65</b>	
128	<b>R107-2952</b>	107-2952	Bracket - Front Roller	2	<b>31.55</b>	
129	<b>R3231-4</b>	01-157-0440, 01-173-0612, 3231-4	Bolt - Carriage 3/8-16 x 1-1/2	2	<b>1.20</b>	

All original equipment manufacturers names and part numbers are used for identification purposes only, and we are in no way implying that our products are original equipment parts. Prices subject to change without notice.



# Replaces Toro Reelmaster 5410-D Parts

DPA Cutting Unit with 7" Reel - Models 03681, 03682, 03696 & 03697

Reel & Bedknife



Item No	R&R Part No.	OEM Part No.	Description	Qty Req	Price Each	Order Quantity
130	<b>R108-4284</b>	108-4284	Shaft - Support	1	<b>32.70</b>	
131	<b>R108-4279</b>	108-4279	Spacer - Frame	2	<b>6.75</b>	
132	<b>R93-2877</b>	93-2877	Bushing - Flanged	2	<b>3.65</b>	
133	<b>R67-9410</b>	67-9410	Washer - Clevis Pin	1	<b>1.55</b>	
134	<b>R3234-19</b>	3234-19	Bolt - Hex Washer 3/8-16x1-3/4	2	<b>1.75</b>	
135	<b>R106-9618</b>	106-9618	Bushing - Rubber	2	<b>7.90</b>	
136	<b>R110-4088-03</b>	110-4088-03, 119-8010-03	Kickstand	1	<b>21.25</b>	
137	<b>R108-4213</b>	108-4213	Bracket- HOC - LH - Groomer	1	<b>62.45</b>	
138	<b>R108-4214</b>	108-4214	Bracket-HOC - RH - Groomer	1	<b>62.45</b>	
139	<b>R106-9758</b>		Bolt - Carriage 5/16x4	4	<b>1.55</b>	
140	<b>R120-5116</b>	120-5116	Washer - Wave	2	<b>6.90</b>	
<i>Tech Note: 2012 &amp; Newer:</i>						
141	<b>R110-4079</b>	110-4079	Spring	1	<b>7.50</b>	
142	<b>R92-2762</b>	92-2762	Pin - Snap	1	<b>1.50</b>	
143	<b>R115-2007</b>	107-7437, 115-2007	Rod - Spring	1	<b>20.45</b>	
145	<b>R443818</b>	01-191-0813, 3218-18, 3218-5, 3248-18	Nut - 1/2-13 Hex Jam Zinc	3	<b>0.35</b>	
146	<b>R99-8662</b>	99-8662	Tube - Spring	1	<b>11.55</b>	
147	<b>R104-3396</b>	104-3396	Bolt - Hex HD 3/8-16 x 2-1/4	1	<b>1.55</b>	
148	<b>R120-0404</b>	120-0404	Bracket- High HOC - LH	1	<b>53.80</b>	

All original equipment manufacturers names and part numbers are used for identification purposes only, and we are in no way implying that our products are original equipment parts. Prices subject to change without notice.



# Replaces Toro Reelmaster 5410-D Parts

DPA Cutting Unit with 7" Reel - Models 03681, 03682, 03696  
& 03697

Reel & Bedknife



Item No	R&R Part No.	OEM Part No.	Description	Qty Req	Price Each	Order Quantity
<i>Tech Note: Fits 2011 &amp; Newer:</i>						
149	<b>R120-0405</b>	120-0405	Bracket - High HOC - RH	1	<b>53.80</b>	
<i>Tech Note: Fits 2011 &amp; Newer:</i>						
150	<b>R125-2796</b>	125-2796	Bracket- Front HOC	2	<b>36.60</b>	
<i>Tech Note: Fits 2013 &amp; Newer:</i>						
151	<b>R108-0015</b>	108-0015	Washer - Flat	2	<b>1.20</b>	
152	<b>R120-5120</b>	120-5120	Spring - Compression	2	<b>2.35</b>	
153	<b>R3296-48</b>	119-4039, 32146-7, 3296-34, 3296-48	Locknut - 7/16-14 ESNA	2	<b>0.55</b>	
154	<b>R120-5118</b>	120-5118	Shaft - Adjuster	2	<b>31.05</b>	
<i>Tech Note: 2012 &amp; Newer:</i>						

All original equipment manufacturers names and part numbers are used for identification purposes only, and we are in no way implying that our products are original equipment parts. Prices subject to change without notice.