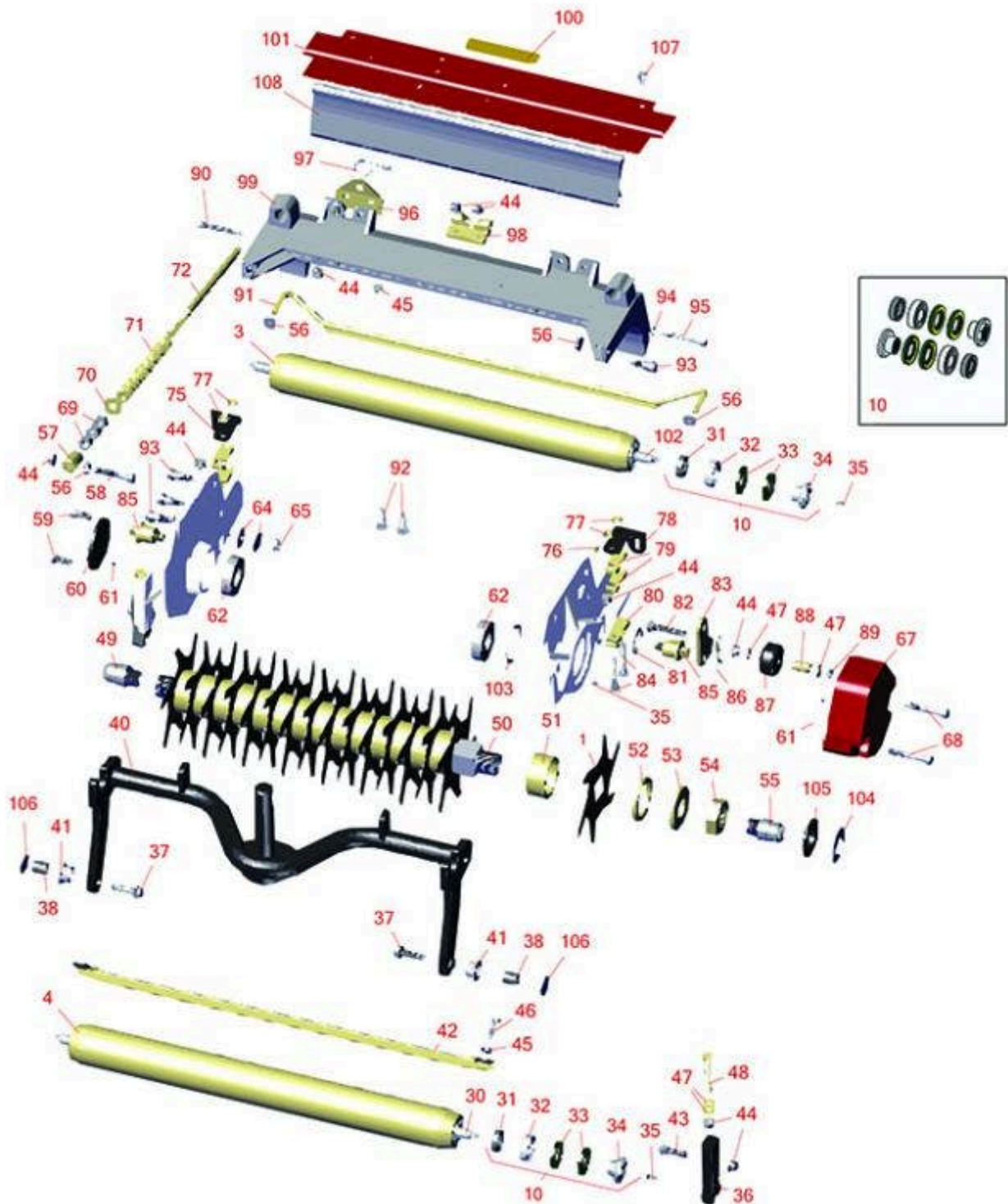




# Replaces Toro Reelmaster 5010-H Parts

Verti-Cut Unit with 7" Reel - Model 03619

Verti-Cut Reel & Frame



All original equipment manufacturers names and part numbers are used for identification purposes only, and we are in no way implying that our products are original equipment parts. Prices subject to change without notice.



# Replaces Toro Reelmaster 5010-H Parts

Verti-Cut Unit with 7" Reel - Model 03619

Verti-Cut Reel & Frame



Item No	R&R Part No.	OEM Part No.	Description	Qty Req	Price Each	Order Quantity
---------	--------------	--------------	-------------	---------	------------	----------------

## Verti-Cut Blades

1	<b>R93-3038-03</b>	93-3038, 93-3038-03	Blade - Vertical Mower 1/16x7.25	16	<b>4.20</b>	
1	<b>R106-8625</b>	106-8625	Blade - Carbide Tip	16	<b>18.30</b>	

## R&R Rollers

3	<b>R114-5404</b>	114-5404, 137-6107	Roller - Smooth Tubular Steel - Long	1	<b>171.05</b>	
<i>Tech Note: Constructed with a through shaft, this heavy-duty roller uses greasable stainless ball bearings. (2006 - 2007):</i>						
4	<b>R114-5419</b>	114-5419, 137-6109	Roller - Smooth Tubular Steel	1	<b>253.55</b>	

## Overhaul Kits

10	<b>R114-5430</b>	114-5430	Overhaul Kit - Roller	1	<b>82.40</b>	
<i>Tech Note: Includes 4 ea.: R112-7494 Seals; 2 ea.: R302-5 Grease Zerks, R114-3717 Seals, R112-5290 Bearings &amp; R114-3745 Locknuts:</i>						

## Other Parts Available

30	<b>R114-5403</b>	114-5403	Shaft - Front Roller	1	<b>49.60</b>	
31	<b>R114-3717</b>	114-3717	Seal	2	<b>2.35</b>	
32	<b>R112-5290</b>	112-5290, 251--346, 251-346, 72-5430	Bearing - Stainless	2	<b>10.30</b>	
33	<b>R112-7494</b>	112-7494	Seal	4	<b>5.15</b>	
34	<b>R114-3745</b>	114-3745, 114-5411	Locknut - Bearing - Stainless	2	<b>19.15</b>	

All original equipment manufacturers names and part numbers are used for identification purposes only, and we are in no way implying that our products are original equipment parts. Prices subject to change without notice.



# Replaces Toro Reelmaster 5010-H Parts

Verti-Cut Unit with 7" Reel - Model 03619

Verti-Cut Reel & Frame



Item No	R&R Part No.	OEM Part No.	Description	Qty Req	Price Each	Order Quantity
35	<b>R302-5</b>	21-6010, 302-11, 302-37, 302-47, 302-5, 302-57, 302-58, 302-6, 31-0300, 32-9660, 60-0800, 62-3880, 92-4181	Fitting - Grease	6	<b>0.27</b>	
36	<b>R125-2796</b>	125-2796	Bracket- Front HOC	2	<b>36.60</b>	
<i>Tech Note: Fits 2013 &amp; Newer:</i>						
37	<b>R3234-19</b>	3234-19	Bolt - Hex Washer 3/8-16x1-3/4	2	<b>1.75</b>	
38	<b>R108-4279</b>	108-4279	Spacer - Frame	2	<b>6.75</b>	
40	<b>R107-7433</b>	107-7433	Carrier Frame Assy	1	<b>262.35</b>	
41	<b>R93-2877</b>	93-2877	Bushing - Flanged	2	<b>3.65</b>	
42	<b>R108-4475-03</b>	108-4475-03	Scraper - Full Front 2.5 in	1	<b>29.30</b>	
43	<b>R3231-4</b>	01-157-0440, 01-173-0612, 3231-4	Bolt - Carriage 3/8-16 x 1-1/2	2	<b>1.20</b>	
44	<b>R104-8301</b>	104-8301, 104-9301, 109-6658, 133-7570	Locknut - 3/8-16 Nylon Flanged	13	<b>0.84</b>	
45	<b>R445722</b>	30-8980, 32128-2, 32128-20, 32128-20 , 445722	Nut - Serrated Washer	6	<b>0.66</b>	

All original equipment manufacturers names and part numbers are used for identification purposes only, and we are in no way implying that our products are original equipment parts. Prices subject to change without notice.



# Replaces Toro Reelmaster 5010-H Parts

Verti-Cut Unit with 7" Reel - Model 03619

Verti-Cut Reel & Frame



Item No	R&R Part No.	OEM Part No.	Description	Qty Req	Price Each	Order Quantity
46	<b>R322-16</b>	322-16, Apr-00	Bolt - Hex HD 5/16-18 x 1-1/8	2	<b>1.65</b>	
47	<b>R453011</b>	01-166-0100, 01-166-0120, 01-166-0270, 01-166-0500, 01-166-0600, 01-166-0620, 132-4593, 2356-3, 237-12, 24-10-AD, 24-11-AD, 24-11-BD, 24-12-AD, 24-12-BD, 30-9310, 32-8190, 3256-24, 3256-3, 3256-36, 3256-4, 453011, 47-9950, 48-9220, 513458, 7-0052	Washer - Flat 3/8 SAE Y/Zinc	8	<b>0.11</b>	
48	<b>R112-7451</b>	100-9429, 112-7451	Bolt - Hex Tap 3/8-16 x 2-3/4	2	<b>1.95</b>	
49	<b>R108-4978</b>	108-4978, 131-0516	Insert - RH - Verti-Cut Shaft	1	<b>77.40</b>	
50	<b>R108-4975</b>	108-4975	Shaft Assy - V-Cut	1	<b>267.70</b>	
51	<b>R105-0172</b>	105-0172	Spacer - Verticut Shaft 1.2 in	15	<b>11.25</b>	
52	<b>R105-0177</b>	105-0177	Spacer - Verticut Shaft 1/4 in	1	<b>5.40</b>	
53	<b>R105-0173</b>	105-0173	Washer - Verticut Shaft 1/4 in	1	<b>12.65</b>	
54	<b>R3220-25</b>	3220-25	Nut - Jam 1-3/8-12	1	<b>22.15</b>	

All original equipment manufacturers names and part numbers are used for identification purposes only, and we are in no way implying that our products are original equipment parts. Prices subject to change without notice.



# Replaces Toro Reelmaster 5010-H Parts

Verti-Cut Unit with 7" Reel - Model 03619

Verti-Cut Reel & Frame



Item No	R&R Part No.	OEM Part No.	Description	Qty Req	Price Each	Order Quantity
55	<b>R108-4977</b>	108-4977, 131-0515	Insert - LH - Verti-Cut Shaft	1	<b>77.40</b>	
56	<b>R32128-43</b>	30-8990, 32128-43, 3290-357	Nut - Flanged Whiz - 3/8-16	9	<b>0.62</b>	
57	<b>R99-8662</b>	99-8662	Tube - Spring	1	<b>11.55</b>	
58	<b>R104-3396</b>	104-3396	Bolt - Hex HD 3/8-16 x 2-1/4	1	<b>1.55</b>	
59	<b>R323-6</b>	01-150-0010, 01-178-0608, 20-47-AD, 20-47-AGD, 3224-2, 323-6, 49-3510, 908034P, 908332	Bolt - Hex HD 3/8-16 x 1 GR5 YZ	2	<b>0.59</b>	
60	<b>R94-2703</b>	94-2703	Plug - Plastic Spindle Housing	1	<b>2.05</b>	
61	<b>R112-6967</b>	112-6967	O-Ring	2	<b>1.95</b>	
62	<b>R115-3296</b>	115-3296	Bearing	2	<b>23.50</b>	
64	<b>R453013</b>	01-166-0140, 01-166-0700, 3256-5, 80-4850	Washer - Flat 7/16	4	<b>0.26</b>	
65	<b>R3296-28</b>	119-4154, 140-9234, 32127-34, 32128-7, 32128-8, 32136-7, 3296-28	Nut - 1/2-20 ESNA Jam	2	<b>1.25</b>	
67	<b>R108-4269-01</b>	108-4269-01	Weight	1	<b>82.65</b>	

All original equipment manufacturers names and part numbers are used for identification purposes only, and we are in no way implying that our products are original equipment parts. Prices subject to change without notice.



# Replaces Toro Reelmaster 5010-H Parts

Verti-Cut Unit with 7" Reel - Model 03619

Verti-Cut Reel & Frame



Item No	R&R Part No.	OEM Part No.	Description	Qty Req	Price Each	Order Quantity
68	<b>R101526</b>	01-150-0970, 01-178-0620, 101526, 20-53-AGD, 321-11, 3224-8, 323-11, 323-12, 323-31, 323-4, 323-47	Bolt - Hex HD 3/8-16 x 2-1/2 GR5	2	<b>0.91</b>	
69	<b>R443818</b>	01-191-0813, 3218-18, 3218-5, 3248-18	Nut - 1/2-13 Hex Jam Zinc	3	<b>0.35</b>	
70	<b>R453017</b>	01-166-0050, 01-166-0240, 01-166-0800, 24-13-AD, 24-14-AD, 32-8110, 3256-26, 3256-6, 453017, 69-8980, 87-7270	Washer - Flat 1/2	1	<b>0.28</b>	
71	<b>R110-4079</b>	110-4079	Spring	1	<b>7.50</b>	
72	<b>R115-2007</b>	107-7437, 115-2007	Rod - Spring	1	<b>20.45</b>	
75	<b>R107-3281</b>	107-3281	Bracket - Scraper - RH	1	<b>16.40</b>	
76	<b>R170714</b>	302-34, 302-39, 62-3520	Fitting - Pressure Relief	2	<b>2.25</b>	
77	<b>R104-8300</b>	104-8300, 104-8300 , 119-4041	Locknut - 5/16-18 Flanged Y/Zinc	4	<b>0.47</b>	
78	<b>R107-3279</b>	107-3279	Bracket - Scraper - LH	1	<b>16.40</b>	

All original equipment manufacturers names and part numbers are used for identification purposes only, and we are in no way implying that our products are original equipment parts. Prices subject to change without notice.



# Replaces Toro Reelmaster 5010-H Parts

Verti-Cut Unit with 7" Reel - Model 03619

Verti-Cut Reel & Frame



Item No	R&R Part No.	OEM Part No.	Description	Qty Req	Price Each	Order Quantity
79	<b>R119-0626</b>	119-0626	Shim - Roller - 1/4 in - Slotted	4	<b>5.45</b>	
80	<b>R106-3924</b>	106-3924	Bracket - Rear Roller	2	<b>15.70</b>	
81	<b>R3254-21</b>	3254-21	Washer - 1 in Interl Star	2	<b>2.15</b>	
82	<b>R3231-7</b>	3231-33, 3231-7	Bolt - Carriage 3/8-16 x 2-1/4	2	<b>3.85</b>	
83	<b>R108-4286</b>	108-4286	Bracket - Adj	2	<b>9.80</b>	
84	<b>RP17609-2</b>	106-9758, 3230-7	Bolt - Carriage 5/16-18 x 1-1/2	4	<b>0.46</b>	
85	<b>R108-4289</b>	108-4289	Pin - Roller Mounting	2	<b>35.55</b>	
86	<b>R3290-355</b>	01-159-0050, 3290-355, 58-5370	Pin - Bridge - Snap	2	<b>2.35</b>	
87	<b>R108-4293</b>	108-4293	Roller - Verti-Cut	2	<b>9.95</b>	
88	<b>R59-2580</b>	59-2580	Spacer - Wheel	2	<b>5.30</b>	
89	<b>R3296-59</b>	3296-59	Locknut - 3/8-16 Nylon Jam	2	<b>0.65</b>	
90	<b>R107-7773</b>	107-7773	Bolt - Soc HD Cap 5/16-18 x 2-1/2	1	<b>7.50</b>	
91	<b>R107-2999</b>	107-2999	Scraper - Rear Roller	1	<b>30.95</b>	
92	<b>R3231-25</b>	01-173-0610, 30-9970, 3231-25, 3231-3, 900064P	Bolt - Carriage 3/8-16 x 1-1/4	4	<b>0.66</b>	
93	<b>R107-2979</b>	107-2979	Bolt - Shoulder	6	<b>3.25</b>	
94	<b>R3256-74</b>	3256-74	Washer - Flat	1	<b>0.65</b>	

All original equipment manufacturers names and part numbers are used for identification purposes only, and we are in no way implying that our products are original equipment parts. Prices subject to change without notice.



# Replaces Toro Reelmaster 5010-H Parts

Verti-Cut Unit with 7" Reel - Model 03619

Verti-Cut Reel & Frame



Item No	R&R Part No.	OEM Part No.	Description	Qty Req	Price Each	Order Quantity
95	<b>R322-14</b>	01-150-0830, 01-178-0524, 30-8900, 322-14	Bolt - Hex HD 5/16-18 x 3 GR5	1	<b>2.15</b>	
96	<b>R110-4069</b>	110-4069	Bracket	1	<b>7.05</b>	
97	<b>R92-2762</b>	92-2762	Pin - Snap	1	<b>1.50</b>	
98	<b>R110-4058</b>	110-4058	Bracket - Chain	1	<b>19.40</b>	
99	<b>R107-3258</b>	107-3258	Frame	1	<b>191.95</b>	
100	<b>R93-6688</b>	93-6688	Decal - Warning	1	<b>2.30</b>	
101	<b>R107-2996</b>	107-2996	Grass Shield - Front	1	<b>29.40</b>	
102	<b>R114-5407</b>	114-5407	Shaft - Long Rear Roller	1	<b>58.75</b>	
103	<b>R105-5700</b>	105-5700, 115-5258	Wave Washer - Bearing	1	<b>2.55</b>	
104	<b>R115-3299</b>	115-3299	Seal- Flocked	2	<b>11.40</b>	
105	<b>R127-4284</b>	127-4284	Washer - Special	2	<b>3.85</b>	
106	<b>R130-8094</b>	130-8094	Washer	2	<b>4.70</b>	
107	<b>R3234-7</b>	3234-7	Bolt - Hex Washer HD 5/16-18 x 5/8	4	<b>1.30</b>	
108	<b>R125-1978</b>	125-1978	Grass Shield - Rear	1	<b>47.05</b>	

All original equipment manufacturers names and part numbers are used for identification purposes only, and we are in no way implying that our products are original equipment parts. Prices subject to change without notice.