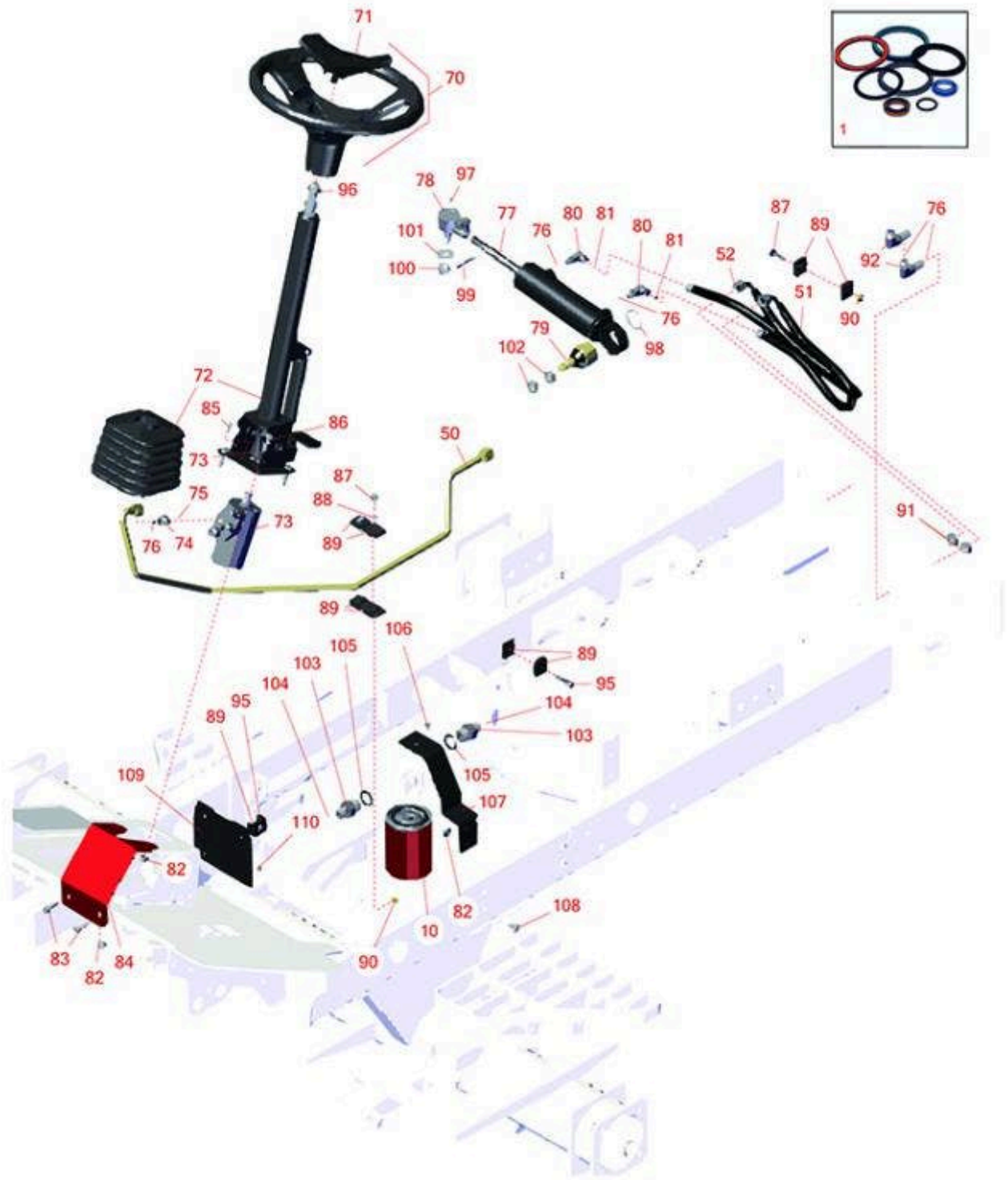




Replaces Toro Reelmaster 5010-H Parts

Traction Unit
Steering Column



All original equipment manufacturers names and part numbers are used for identification purposes only, and we are in no way implying that our products are original equipment parts. Prices subject to change without notice.



Replaces Toro Reelmaster 5010-H Parts

Traction Unit
Steering Column



Item No	R&R Part No.	OEM Part No.	Description	Qty Req	Price Each	Order Quantity
Overhaul Kit						
1	R114-8875	114-8875	Seal Kit - Fits R110-9035 Cylinder	1	87.40	
1	R110-6461	110-6461	Seal Kit -Fits R107-4458 Cylinder	1	75.50	
Filters						
10	R86-3010	23-9740, 239470, 28-1370, 281370, 353-387, 353387, 54-0110, 540110, 76-6490, 86-3010, 863010, Dec-70	Baldwin Hydraulic Oil Filter	1	10.20	
Hoses						
50	R108-1711	108-1711	Tube Assy	1	78.35	
51	R110-0928	110-0928	Hydraulic Hose Assy	1	50.40	
52	R110-0973	110-0973	Hose Asy	1	48.70	
Other Parts Available						
70	R98-1471	93-5212, 94-3500, 98-1471	Steering Wheel Assy - 14 in Incl Cap	1	92.30	
71	R98-1468	98-1468	Cap - 14" Steering Wheel	1	13.15	
72	R106-3622	106-3622	Column Assy - Tilt	1	435.85	
73	R106-3621	106-3621	Valve - Steering	1	499.90	
74	R340-2	340-2, 60-1920	Hydraulic Fitting - Striaight	4	6.50	

All original equipment manufacturers names and part numbers are used for identification purposes only, and we are in no way implying that our products are original equipment parts. Prices subject to change without notice.



Replaces Toro Reelmaster 5010-H Parts

*Traction Unit
Steering Column*



Item No	R&R Part No.	OEM Part No.	Description	Qty Req	Price Each	Order Quantity
75	R237-42	237-42, 31-4160	O-Ring	4	0.80	
76	R237-22	107-8844, 237-22, 237-78	O-Ring	6	0.62	
77	R107-4458	107-4458, 110-9035	Hydraulic Cylinder	1	366.50	
78	R106-6895-03	106-6895-03, 69-9810, 69-9810-03	Ball Joint Assy	1	141.45	
79	R106-6774	106-6774, 92-5838, 92-5838-01	Ball Joint	1	48.65	
80	R340-132	340-132	Hydraulic Fitting - 90 Deg	2	14.40	
81	R237-21	237-21, 327-21	O-Ring	4	0.47	
82	R104-8301	104-8301, 104-9301, 109-6658, 133-7570	Locknut - 3/8-16 Nylon Flanged	14	0.84	
83	R3234-11	3234-11	Bolt - Hex Washer HD	6	1.05	
84	R110-8876-01	110-8876-01	Brace - Column	1	30.60	
85	R105-2409	105-2409	M6-1.0 x 16 Socket HD C/S Pln	4	1.20	
86	R3274-1	3274-1	Bolt - 3/8-16 x 1 1/4 Soc HD Cap	4	4.95	
87	R322-7	01-150-0750, 01-150-0760, 01-178-0512, 20-28-AD, 20-28-AGD, 322-7, 3223-4	Bolt - Hex HD 5/16-18 x 1-1/2	2	0.62	

All original equipment manufacturers names and part numbers are used for identification purposes only, and we are in no way implying that our products are original equipment parts. Prices subject to change without notice.



Replaces Toro Reelmaster 5010-H Parts

*Traction Unit
Steering Column*



Item No	R&R Part No.	OEM Part No.	Description	Qty Req	Price Each	Order Quantity
88	R453009	01-166-0400, 24-10-BD, 24-9-AD, 32-9650, 3256-2, 3256-23, 3256-3, 3256-67, 3290-217, 3556-3, 4-2390, 7-0152	Washer - Flat 5/16 SAE	2	0.13	
89	R56-7973	56-7973	Clamp - Tube	6	13.95	
90	R104-8300	104-8300, 104-8300 , 119-4041	Locknut - 5/16-18 Flanged Y/Zinc	3	0.47	
91	R340-70	340-70	Nut - Lock	4	2.30	
92	R340-154	340-154, 93-9150	Union - Bulkhead	2	24.65	
95	R32144-57	32144-57	Bolt - Hex Washer 5/16-18 x 1-1/2	1	1.45	
96	R3296-33	3296-33	Locknut - 5/8-18 ESNA Jam	1	1.30	
97	R302-5	21-6010, 302-11, 302-37, 302-47, 302-5, 302-57, 302-58, 302-6, 31-0300, 32-9660, 60-0800, 62-3880, 92-4181	Fitting - Grease	1	0.27	
98	R32151-104	32151-104	Ring - Retaining, Ex	1	4.35	

All original equipment manufacturers names and part numbers are used for identification purposes only, and we are in no way implying that our products are original equipment parts. Prices subject to change without notice.



Replaces Toro Reelmaster 5010-H Parts

*Traction Unit
Steering Column*



Item No	R&R Part No.	OEM Part No.	Description	Qty Req	Price Each	Order Quantity
99	R3272-12	01-151-0090, 28-19-D, 3272-12	Pin - Cotter 1/8 x 1-1/4	1	0.11	
100	R105-7941	105-7941	Nut - Hex - Slotted	1	10.95	
101	R68-8980	68-8980	Bushing - Spanner Wheel	1	6.90	
102	R443828	01-191-1018, 3214, 3220-6, 443828, 915089P	Nut - 5/8-18 Hex	2	0.62	
103	R100-4240	100-4240	No 8 Orfs Male x No 12 Orb Male	2	32.55	
104	R237-30	23-6320, 237-30	O-Ring - Seal	2	0.78	
105	R237-81	237-81, 237.81, 327-81	O-Ring	2	2.30	
106	R3234-33	3234-33	Bolt - 1/4-20 x 3/4 Serr Hex Flanged	2	0.51	
107	R110-0906-01	110-0906-01	Support -Oil Filter	1	27.90	
108	R3231-27	3231-27	Bolt - Carriage 3/8-16 x 7/8	2	0.53	
109	R110-0947-03	110-0947, 110-0947-03	Plate - Cover	1	11.30	
110	R12-3270	12-3270, 30-0700, 32104-17, 9266714, Aug-80	Bolt - Hex Washer 1/4-20 x 1/2	6	1.45	

All original equipment manufacturers names and part numbers are used for identification purposes only, and we are in no way implying that our products are original equipment parts. Prices subject to change without notice.