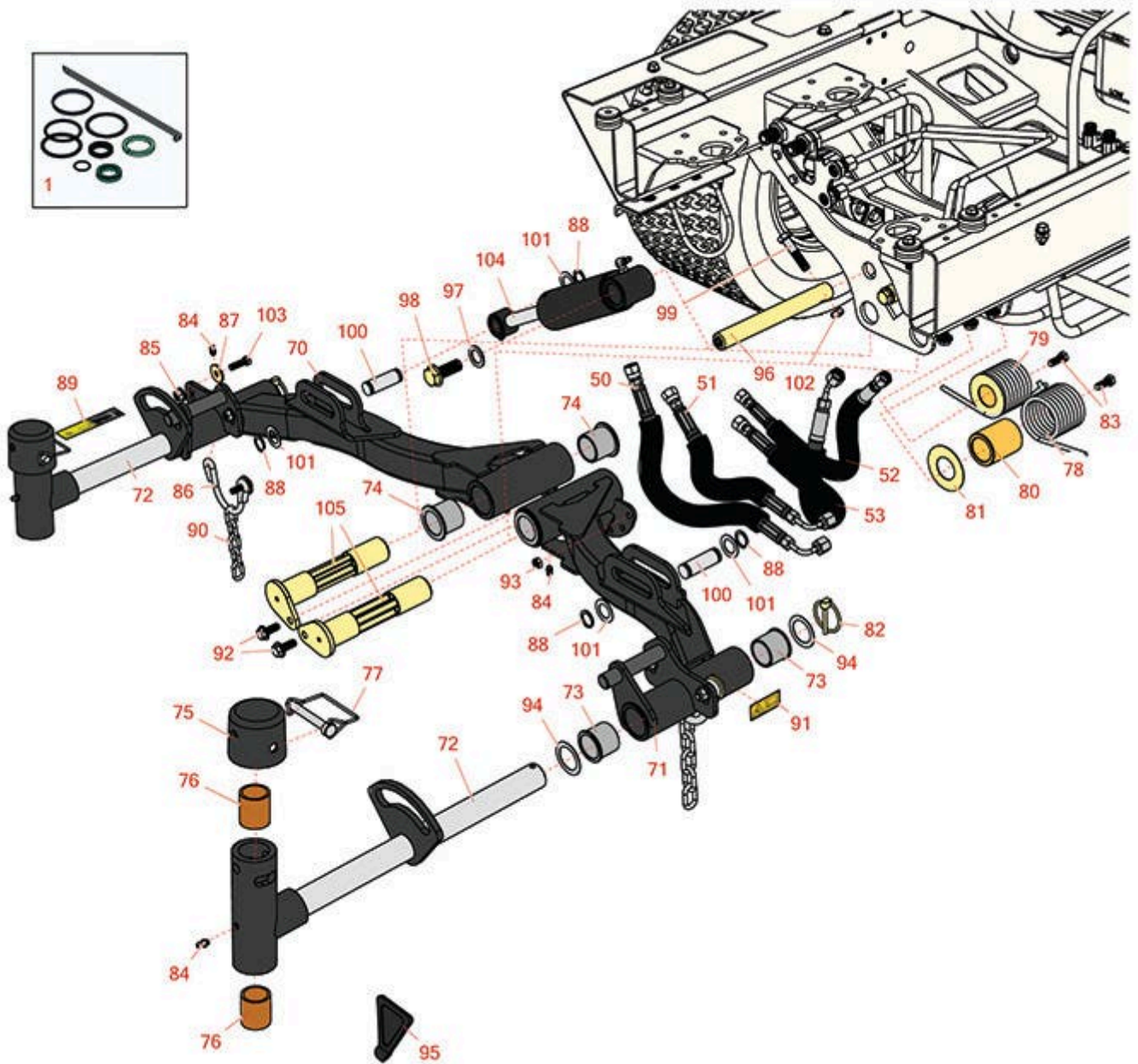




Replaces Toro Reelmaster 5010-H Parts

Traction Unit
Rear Lift Arm



All original equipment manufacturers names and part numbers are used for identification purposes only, and we are in no way implying that our products are original equipment parts. Prices subject to change without notice.



Replaces Toro Reelmaster 5010-H Parts

*Traction Unit
Rear Lift Arm*



Item No	R&R Part No.	OEM Part No.	Description	Qty Req	Price Each	Order Quantity
1	R119-6992	119-6992	Seal Kit - Fits R119-6987 & R119-6988 Cylinder	1	89.40	
Hoses						
50	R110-0929	110-0929	Hydraulic Hose Assy	1	46.15	
51	R110-0930	110-0930, 110-2930	Hydraulic Hose Assy	1	46.15	
52	R110-0931	110-0931	Hydraulic Hose Assy	1	38.15	
53	R110-8966	110-8966	Hydraulic Hose Assy	1	52.10	
Other Parts Available						
70	R110-0993	110-0993	Lift Arm - No. 3	1	302.45	
71	R110-0992	110-0992	Lift Arm - No. 2	1	302.75	
72	R107-2052	107-2052, 138-1248	Pivot Yoke Assy	2	250.95	
73	R104-0015	104-0015, 104-8339	Bushing - Flanged	4	5.15	
74	R69-6470	69-6470	Bushing - Flanged	4	6.15	
75	R107-4027	107-4027	Cap - Pivot Yoke	2	14.25	
76	R256-254	256-254	Bushing 1-1/8 x 1.375 x 1.5	4	5.15	
77	R107-7400	107-7400	Pin - Lynch	2	6.95	
78	R99-5609-03	99-5609, 99-5609-03	Spring-Torsion, LH	1	19.15	
79	R99-5608-03	99-5608, 99-5608-03	Spring-Torsion, RH	1	19.15	
80	R110-5339	110-5339	Spacer	2	14.05	

All original equipment manufacturers names and part numbers are used for identification purposes only, and we are in no way implying that our products are original equipment parts. Prices subject to change without notice.



Replaces Toro Reelmaster 5010-H Parts

*Traction Unit
Rear Lift Arm*



Item No	R&R Part No.	OEM Part No.	Description	Qty Req	Price Each	Order Quantity
81	R110-5345	110-5345	Washer	2	2.50	
82	R92-1298	92-1298	Pin - Klik	2	2.45	
83	R3234-11	3234-11	Bolt - Hex Washer HD	2	1.05	
84	R302-5	21-6010, 302-11, 302-37, 302-47, 302-5, 302-57, 302-58, 302-6, 31-0300, 32-9660, 60-0800, 62-3880, 92-4181	Fitting - Grease	4	0.27	
85	R104-8301	104-8301, 104-9301, 109-6658, 133-7570	Locknut - 3/8-16 Nylon Flanged	4	0.84	
86	R110-0922	110-0922	Hoop - Chain	2	8.35	
87	R63-8410	53-6380, 63-4810, 63-8410	Washer - Isolator Bushing	4	0.77	
88	R32120-93	32120-93	Snap Ring - HD	4	1.20	
89	R110-9642	110-9642	Decal	2	8.70	
90	R84-2451	84-2451	Chain - Straight 5	2	4.75	
91	R93-6696	93-6696	Decal - Warning	2	8.75	
92	R32144-14	32104-32, 32104-49, 32144-14	Bolt - Hex Washer 5/16-18 x 5/8	2	2.45	

All original equipment manufacturers names and part numbers are used for identification purposes only, and we are in no way implying that our products are original equipment parts. Prices subject to change without notice.



Replaces Toro Reelmaster 5010-H Parts

*Traction Unit
Rear Lift Arm*



Item No	R&R Part No.	OEM Part No.	Description	Qty Req	Price Each	Order Quantity
93	R3296-29	1-804256, 3290-357, 3296-29, 915662P	Locknut - 5/16-18 ESNA	2	2.95	
94	R76-2980	76-2980	Washer - Thrust	4	4.55	
95	R110-4088-03	110-4088-03, 119-8010-03	Kickstand	1	21.25	
96	R117-0148	117-0148	Pin - Hyd Cyl	2	29.30	
97	R453017	01-166-0050, 01-166-0240, 01-166-0800, 24-13-AD, 24-14-AD, 32-8110, 3256-26, 3256-6, 453017, 69-8980, 87-7270	Washer - Flat 1/2	2	0.28	
98	R3234-38	3234-38	Bolt - Flanged Hex 1/2-13 x 1-1/4	2	3.55	
99	R323-9	01-150-0190, 01-150-1540, 01-178-0614, 107229, 20-50-AD, 20-50-AGD, 30-9430, 32105-4, 3224-5, 323-9, 513363, 513364, 5377, 908037P	Bolt - Hex HD 3/8-16 x 1-3/4	2	0.91	
100	R104-0046	104-0046	Pin - Slide - Cylinder	2	7.15	
101	R3-6498	3--6498, 3-6498, 47-8270	Washer - Thrust	4	4.10	

All original equipment manufacturers names and part numbers are used for identification purposes only, and we are in no way implying that our products are original equipment parts. Prices subject to change without notice.



Replaces Toro Reelmaster 5010-H Parts

*Traction Unit
Rear Lift Arm*



Item No	R&R Part No.	OEM Part No.	Description	Qty Req	Price Each	Order Quantity
102	R3296-59	3296-59	Locknut - 3/8-16 Nylon Jam	2	0.65	
103	R400264	01-150-0180, 01-178-0610, 20-48-AD, 20-48-AGD, 32-9160, 3224-3, 323-29, 323-7, 400264, 908035P	Bolt - Hex HD 3/8-16 x 1-1/4	4	0.40	
104	R119-6988	119-6988	Hydraulic Cylinder	2	349.60	
105	R125-2037	125-2037	Shaft	2	52.50	

All original equipment manufacturers names and part numbers are used for identification purposes only, and we are in no way implying that our products are original equipment parts. Prices subject to change without notice.