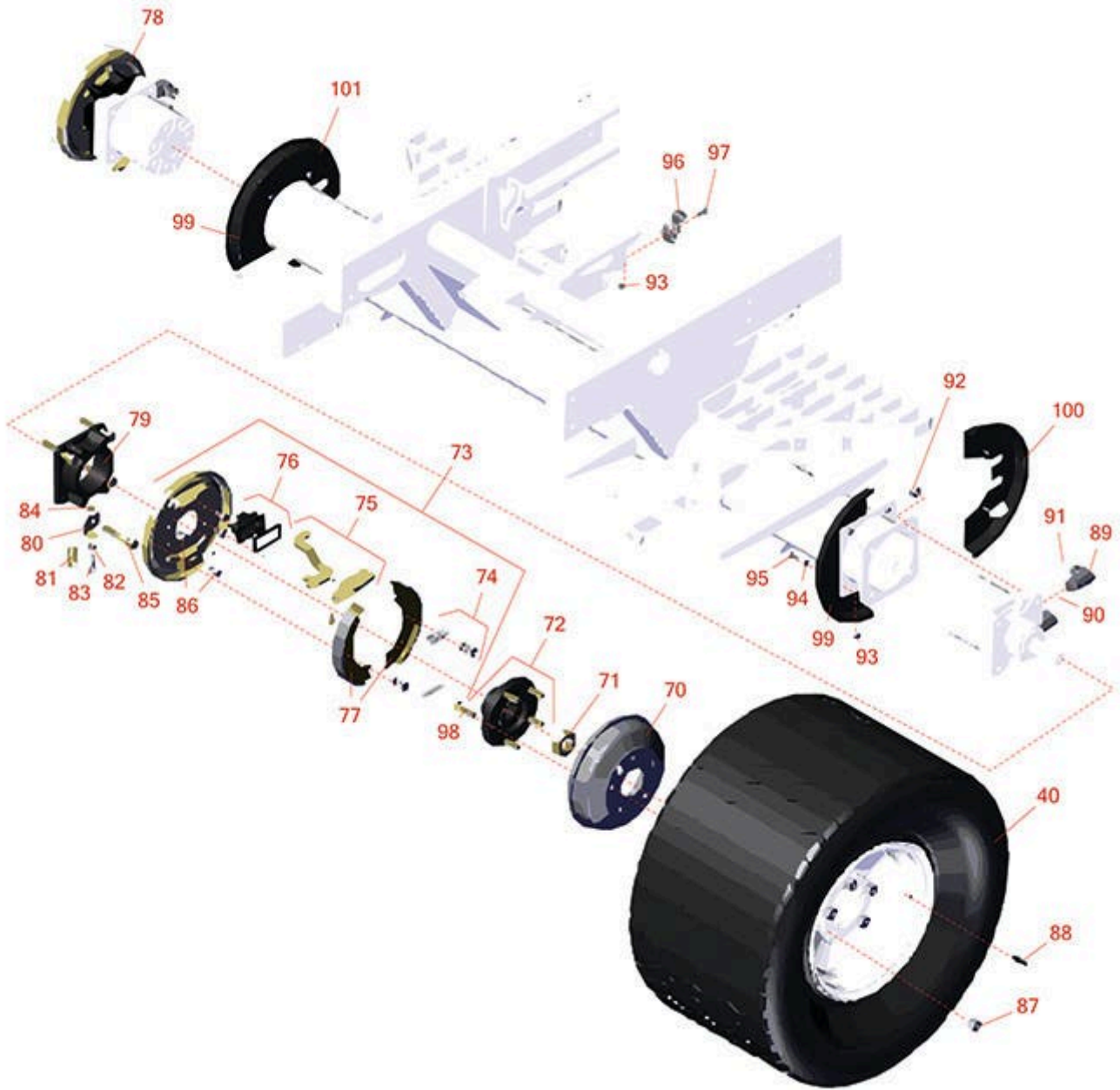




# Replaces Toro Reelmaster 5010-H Parts

Traction Unit

Front Wheel, Brakes & Hydraulics



All original equipment manufacturers names and part numbers are used for identification purposes only, and we are in no way implying that our products are original equipment parts. Prices subject to change without notice.



# Replaces Toro Reelmaster 5010-H Parts

*Traction Unit*

*Front Wheel, Brakes & Hydraulics*



Item No	R&R Part No.	OEM Part No.	Description	Qty Req	Price Each	Order Quantity
<b>Tires</b>						
40	<b>RTK2612-4LG-I</b>	117-5196	Tire - 26.5x14.00-12 Nhs (4 Ply) K507 Turf	2	<b>323.10</b>	
40	<b>RCT529386</b>		Tire - 26.5x14.00-12 Nhs (4 Ply) Carlisle Ultra Trac	2	<b>239.15</b>	
<b>Other Parts Available</b>						
70	<b>R114-8864</b>	114-8864	Drum - Brake	2	<b>128.40</b>	
71	<b>R117-3290</b>	117-3290	Nut - Hex	2	<b>13.60</b>	
72	<b>R121-5631</b>	121-5621, 121-5631	Hub Assy	2	<b>88.95</b>	
73	<b>R120-6261</b>	120-6261	Brake Assy - LH	1	<b>295.60</b>	
74	<b>R108-6983</b>	108-6983	Brake Hardware Kit	2	<b>13.60</b>	
75	<b>R110-8910</b>	110-8910	Actuator Kit - LH	1	<b>33.80</b>	
75	<b>R110-8884</b>	110-8884	Actuator Kit - RH	1	<b>33.80</b>	
76	<b>R110-8885</b>	110-8885	Dust Boot Kit - Brake	2	<b>12.35</b>	
77	<b>R108-6981</b>	108-6981	Brake Shoe Kit - Set/2	2	<b>71.45</b>	
78	<b>R120-6260</b>	120-6260	Brake Assy - RH	1	<b>295.60</b>	
79	<b>R120-6253-03</b>	120-6253-03	Adapter-Brake	2	<b>44.20</b>	
80	<b>R120-6267</b>	120-6267	Clip - Spring - LH	1	<b>5.45</b>	
80	<b>R120-6266</b>	120-6266	Clip - Spring - RH	1	<b>5.45</b>	
81	<b>R87-4020</b>	87-4020	Spring - Extension	2	<b>9.60</b>	
82	<b>RP457-2</b>	01-191-0518, 22-12-AJK, 3218-2, 513299, P457-2	Nut - Jam 5/16-18 Zinc	2	<b>0.19</b>	

All original equipment manufacturers names and part numbers are used for identification purposes only, and we are in no way implying that our products are original equipment parts. Prices subject to change without notice.



# Replaces Toro Reelmaster 5010-H Parts

*Traction Unit*

*Front Wheel, Brakes & Hydraulics*



Item No	R&R Part No.	OEM Part No.	Description	Qty Req	Price Each	Order Quantity
83	<b>R322-7</b>	01-150-0750, 01-150-0760, 01-178-0512, 20-28-AD, 20-28-AGD, 322-7, 3223-4	Bolt - Hex HD 5/16-18 x 1-1/2	2	<b>0.62</b>	
84	<b>R104-8300</b>	104-8300, 104-8300 , 119-4041	Locknut - 5/16-18 Flanged Y/Zinc	2	<b>0.47</b>	
85	<b>R325-12</b>	01-150-0320, 01-150-0880, 01-178-0824, 20-93-AD, 325-12	Bolt - Hx HD	8	<b>5.35</b>	
86	<b>R400258</b>	01-150-0800, 01-178-0600, 01-178-0606, 20-45-AD, 31-0200, 31-9910, 3224-1, 323-4, 400258	Bolt - Hex HD 3/8-16 x 3/4	8	<b>0.51</b>	
87	<b>R242-50</b>	242-50	Nut - 1/2-20 Wheel	10	<b>1.50</b>	
88	<b>R232-27</b>	232-27, 232-31	Stem - Valve w/ Cap	2	<b>4.15</b>	
89	<b>R340-17</b>	340-17	No 10 Male Orfs x No 10 Male Orb	4	<b>23.45</b>	
90	<b>R237-80</b>	237-80, 327-80	O-Ring	4	<b>1.85</b>	
91	<b>R237-65</b>	237-65, 237.65	O-Ring	4	<b>0.65</b>	
92	<b>RF5003</b>	32127-29, 32131-5, 32132-5, 3296-23	Locknut - ESNA 1/2-13	8	<b>0.78</b>	

All original equipment manufacturers names and part numbers are used for identification purposes only, and we are in no way implying that our products are original equipment parts. Prices subject to change without notice.



# Replaces Toro Reelmaster 5010-H Parts

*Traction Unit*

*Front Wheel, Brakes & Hydraulics*



Item No	R&R Part No.	OEM Part No.	Description	Qty Req	Price Each	Order Quantity
93	<b>R301504</b>	2296-42, 301504, 32127-24, 32128-33, 32146-17, 3296-16, 3296-42, 3296-42 , 915661P	Locknut - ESNA 1/4-20	10	<b>0.18</b>	
94	<b>R453009</b>	01-166-0400, 24-10-BD, 24-9-AD, 32-9650, 3256-2, 3256-23, 3256-3, 3256-67, 3290-217, 3556-3, 4-2390, 7-0152	Washer - Flat 5/16 SAE	8	<b>0.13</b>	
95	<b>R321-4</b>	01-150-1030, 01-178-0406, 20-3-AGD, 321-4, 3222-1	Bolt - Hex HD 1/4-20 x 3/4	8	<b>0.52</b>	
96	<b>R2412-134</b>	2412-134	R-Clamp	4	<b>4.35</b>	
97	<b>R3234-4</b>	3234-4	Bolt - Hx Ser Was HD 1/4-20 x 3/4	2	<b>0.67</b>	
98	<b>R114-3918</b>	1-633926, 114-3918	Stud - Wheel	10	<b>2.55</b>	
99	<b>R110-0950</b>	110-0950	Shield - Brake - Front	2	<b>39.15</b>	
100	<b>R110-0951</b>	110-0951	Shiel D- Wheel - Rear LH	1	<b>39.15</b>	
101	<b>R110-8878</b>	110-8878	Shield-Wheel - Rear RH	1	<b>39.15</b>	

All original equipment manufacturers names and part numbers are used for identification purposes only, and we are in no way implying that our products are original equipment parts. Prices subject to change without notice.