

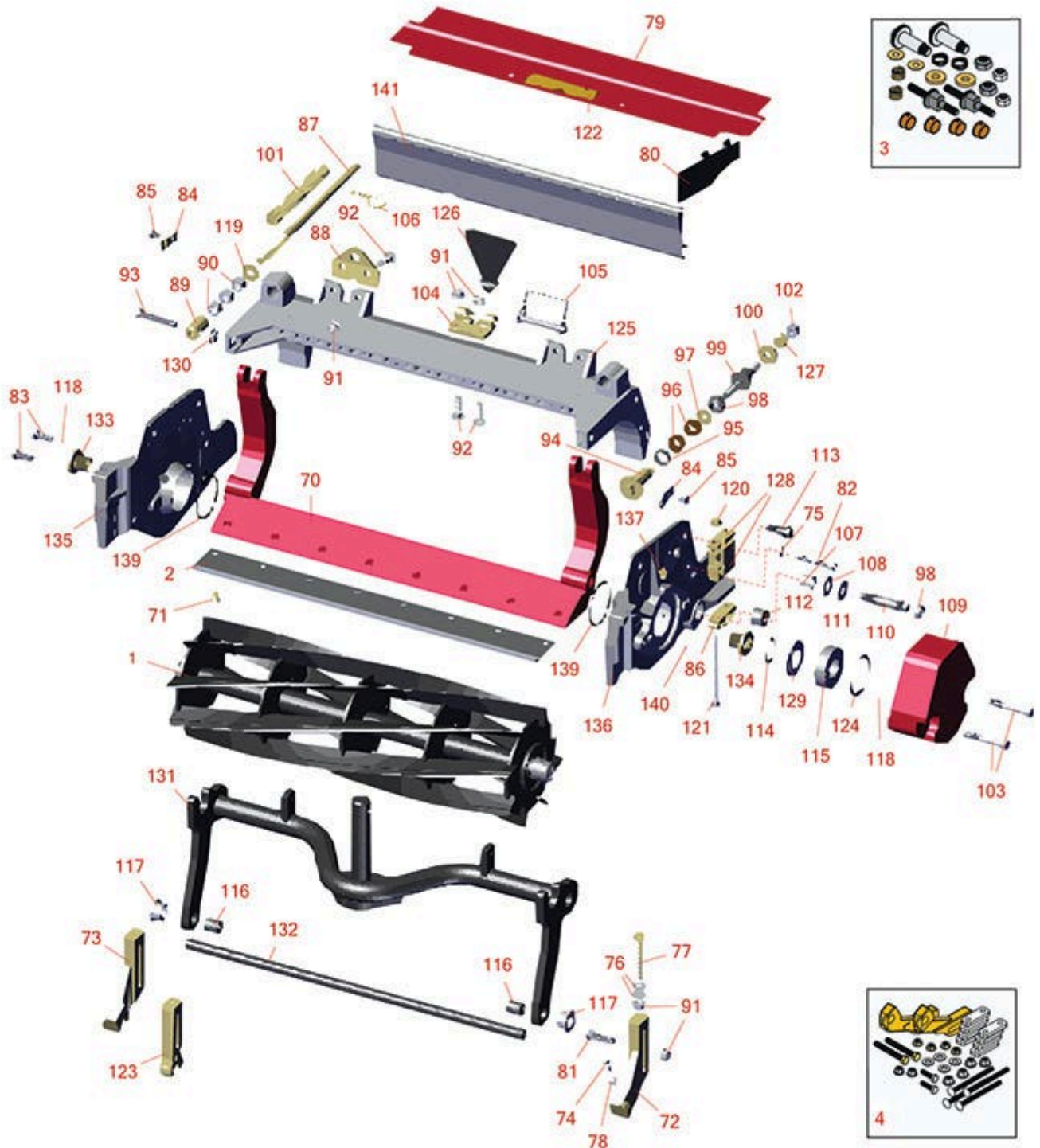


# Replaces Toro Reelmaster 5010-H Parts

Cutting Unit with 7" Reels - Models 03636, 03637, 03638,

03639, 03641 & 03643

Reel & Bedknife



All original equipment manufacturers names and part numbers are used for identification purposes only, and we are in no way implying that our products are original equipment parts. Prices subject to change without notice.



# Replaces Toro Reelmaster 5010-H Parts

Cutting Unit with 7" Reels - Models 03636, 03637, 03638,  
03639, 03641 & 03643  
Reel & Bedknife



Item No	R&R Part No.	OEM Part No.	Description	Qty Req	Price Each	Order Quantity
<b>R&amp;R Reels, Lifetime Guaranteed</b>						
1	<b>R133-8205</b>	133-8205	Reel - 5 Blade Razor Series Radial Low Drag 22x7	1	<b>372.75</b>	
<i>Tech Note: Special high alloy premium steel reel blades &amp; use only with alum endplates:</i>						
1	<b>R137-8444</b>	137-8444	Reel - 5 Blade Razor Series Radial Low Drag w/Bearings and Seals 22x7	1	<b>420.30</b>	
<i>Tech Note: Special high alloy premium steel reel blades &amp; use only with alum endplates:</i>						
1	<b>R127-7102</b>	127-7102	Reel - 8 Blade Radial Low Drag 22x7	1	<b>363.15</b>	
<i>Tech Note: Use only with alum endplates:</i>						
1	<b>R131-6809</b>	131-6809	Reel - 8 Blade Razor Series Forward Swept 22x7	1	<b>398.10</b>	
1	<b>R131-6805</b>	131-6805	Reel - 8 Blade Razor Series Radial Low Drag w/Bearings and Seals 22x7	1	<b>445.90</b>	
<i>Tech Note: Special high alloy premium steel reel blades &amp; use only with alum endplates:</i>						
1	<b>R137-8445</b>	137-8445	Reel - 8 Blade Razor Series Radial Low Drag w/Bearings and Seals 22x7	1	<b>445.95</b>	
<i>Tech Note: Special high alloy premium steel reel blades &amp; use only with alum endplates:</i>						
1	<b>R137-8446</b>	137-8446	Reel - 8 Blade Razor Series Forward Swept Low Drag w/Bearings and Seals 22x7	1	<b>445.80</b>	
<i>Tech Note: Special high alloy premium steel reel blades &amp; use only with alum endplates:</i>						
1	<b>R131-6801</b>	131-6801	Reel - 11 Blade Razor Series Forward Swept Low Drag 22x7	1	<b>423.90</b>	
<i>Tech Note: Special high alloy premium steel reel blades &amp; use only with alum endplates:</i>						

All original equipment manufacturers names and part numbers are used for identification purposes only, and we are in no way implying that our products are original equipment parts. Prices subject to change without notice.



# Replaces Toro Reelmaster 5010-H Parts

Cutting Unit with 7" Reels - Models 03636, 03637, 03638,  
03639, 03641 & 03643  
Reel & Bedknife



Item No	R&R Part No.	OEM Part No.	Description	Qty Req	Price Each	Order Quantity
1	<b>R137-8447</b>	137-8447	Reel - 11 Blade Razor Series Forward Swept Low Drag w/Bearings and Seals 22x7	1	<b>471.50</b>	

*Tech Note: Special high alloy premium steel reel blades & use only with alum endplates:*

1	<b>R137-8455</b>	137-8455	Reel - 11 Blade Razor Series w/Bearings and Seals 22x7	1	<b>471.55</b>	
---	------------------	----------	--	---	---------------	--

## **R&R Bedknives, Lifetime Guaranteed**

2	<b>R110-4074</b>	110-4074	Bedknife - High Cut	1	<b>44.55</b>	
2	<b>R108-9096</b>	108-9096	Bedknife - Standard	1	<b>44.65</b>	
2	<b>R110-4084</b>	110-4084	Bedknife - Low Cut	1	<b>44.75</b>	
2	<b>R137-0832</b>	125-2771, 127-7132, 137-0832	Bedknife - Razor Tool Steel 3/8 x 22 Lowcut	1	<b>99.75</b>	
2	<b>R120-1640</b>	120-1640	Bedknife - Low Cut Extended	1	<b>46.90</b>	

## **R&R Razor Tool Steel Bedknives, Lifetime Guaranteed**

2	<b>R108-9095</b>	108-9095, 137-0833	Bedknife - Razor Tool Steel - 22 High Cut	1	<b>97.55</b>	
2	<b>R119-4280</b>	119-4280	Bedknife - Razor Tool Steel - 22 x 3/8 Extended	1	<b>99.75</b>	

## **Overhaul Kits**

3	<b>R120-7230</b>	120-7230	Overhaul Kit - Fits DPA Units	1	<b>180.50</b>	
---	------------------	----------	-------------------------------	---	---------------	--

*Tech Note: Incl 2 ea.: R108-0015, R115-7039, R119-4155, R120-5116, R120-5118, R120-5120, R3296-33, R3296-48 & 4 ea: R106-5344:*

4	<b>R110-9600</b>	110-9600	High HOC Kit	1	<b>162.75</b>	
---	------------------	----------	--------------	---	---------------	--

*Tech Note: Includes 1 ea.: R120-0404, R120-0405 & 2 ea: R112-7451, R322-16, R445722 & 4 ea.: R106-9758, R104-8300, R453011, R104-8301 & 8 ea: R106-3925:*

All original equipment manufacturers names and part numbers are used for identification purposes only, and we are in no way implying that our products are original equipment parts. Prices subject to change without notice.



# Replaces Toro Reelmaster 5010-H Parts

Cutting Unit with 7" Reels - Models 03636, 03637, 03638,  
03639, 03641 & 03643  
Reel & Bedknife



Item No	R&R Part No.	OEM Part No.	Description	Qty Req	Price Each	Order Quantity
<b>Other Parts Available</b>						
70	<b>R107-3273-01</b>	107-3273-01	Bed Bar - Fits OEM Units Only	1	<b>186.55</b>	
71	<b>R119-4151</b>	119-4151	Screw - Bedknife 5/16-18 x 17/32	11	<b>0.29</b>	
72	<b>R120-0404</b>	120-0404	Bracket- High HOC - LH	1	<b>53.80</b>	
<i>Tech Note: Fits 2011 &amp; Newer:</i>						
73	<b>R120-0405</b>	120-0405	Bracket - High HOC - RH	1	<b>53.80</b>	
<i>Tech Note: Fits 2011 &amp; Newer:</i>						
74	<b>R322-16</b>	322-16, Apr-00	Bolt - Hex HD 5/16-18 x 1-1/8	2	<b>1.65</b>	
75	<b>R3256-74</b>	3256-74	Washer - Flat	1	<b>0.65</b>	
76	<b>R453011</b>	01-166-0100, 01-166-0120, 01-166-0270, 01-166-0500, 01-166-0600, 01-166-0620, 132-4593, 2356-3, 237-12, 24-10-AD, 24-11-AD, 24-11-BD, 24-12-AD, 24-12-BD, 30-9310, 32-8190, 3256-24, 3256-3, 3256-36, 3256-4, 453011, 47-9950, 48-9220, 513458, 7-0052	Washer - Flat 3/8 SAE Y/Zinc	4	<b>0.11</b>	

All original equipment manufacturers names and part numbers are used for identification purposes only, and we are in no way implying that our products are original equipment parts. Prices subject to change without notice.



# Replaces Toro Reelmaster 5010-H Parts

Cutting Unit with 7" Reels - Models 03636, 03637, 03638,  
03639, 03641 & 03643  
Reel & Bedknife



Item No	R&R Part No.	OEM Part No.	Description	Qty Req	Price Each	Order Quantity
77	<b>R112-7451</b>	100-9429, 112-7451	Bolt - Hex Tap 3/8-16 x 2-3/4	2	<b>1.95</b>	
78	<b>R445722</b>	30-8980, 32128-2, 32128-20, 32128-20, 445722	Nut - Serrated Washer	6	<b>0.66</b>	
79	<b>R107-2996</b>	107-2996	Grass Shield - Front	1	<b>29.40</b>	
80	<b>R110-1706</b>	110-1706	Deflector	5	<b>3.40</b>	
81	<b>R3231-4</b>	01-157-0440, 01-173-0612, 3231-4	Bolt - Carriage 3/8-16 x 1-1/2	2	<b>1.20</b>	
82	<b>R107-7773</b>	107-7773	Bolt - Soc HD Cap 5/16-18 x 2-1/2	1	<b>7.50</b>	
83	<b>R323-6</b>	01-150-0010, 01-178-0608, 20-47-AD, 20-47-AGD, 3224-2, 323-6, 49-3510, 908034P, 908332	Bolt - Hex HD 3/8-16 x 1 GR5 YZ	2	<b>0.59</b>	
84	<b>R99-2097</b>	99-2097	Detent - Bed Bar Adjuster	2	<b>8.75</b>	
85	<b>R114-9396</b>	114-9396, 119-4067	Bolt - Hex HD 5/16-18 x 3/8	2	<b>1.45</b>	
86	<b>R106-3924</b>	106-3924	Bracket - Rear Roller	2	<b>15.70</b>	
87	<b>R115-2007</b>	107-7437, 115-2007	Rod - Spring	1	<b>20.45</b>	
88	<b>R110-4069</b>	110-4069	Bracket	1	<b>7.05</b>	
89	<b>R99-8662</b>	99-8662	Tube - Spring	1	<b>11.55</b>	

All original equipment manufacturers names and part numbers are used for identification purposes only, and we are in no way implying that our products are original equipment parts. Prices subject to change without notice.



# Replaces Toro Reelmaster 5010-H Parts

Cutting Unit with 7" Reels - Models 03636, 03637, 03638,  
03639, 03641 & 03643  
Reel & Bedknife



Item No	R&R Part No.	OEM Part No.	Description	Qty Req	Price Each	Order Quantity
90	<b>R443818</b>	01-191-0813, 3218-18, 3218-5, 3248-18	Nut - 1/2-13 Hex Jam Zinc	3	<b>0.35</b>	
91	<b>R104-8301</b>	104-8301, 104-9301, 109-6658, 133-7570	Locknut - 3/8-16 Nylon Flanged	8	<b>0.84</b>	
92	<b>R3231-25</b>	01-173-0610, 30-9970, 3231-25, 3231-3, 900064P	Bolt - Carriage 3/8-16 x 1-1/4	4	<b>0.66</b>	
93	<b>R104-3396</b>	104-3396	Bolt - Hex HD 3/8-16 x 2-1/4	1	<b>1.55</b>	
94	<b>R120-5118</b>	120-5118	Shaft - Adjuster	2	<b>31.05</b>	
<i>Tech Note: 2012 &amp; Newer:</i>						
95	<b>R120-5116</b>	120-5116	Washer - Wave	2	<b>6.90</b>	
96	<b>R106-5344</b>	106-5344	Bushing - Flanged and Keyed	4	<b>5.05</b>	
97	<b>R108-0015</b>	108-0015	Washer - Flat	2	<b>1.20</b>	
98	<b>R3296-33</b>	3296-33	Locknut - 5/8-18 ESNA Jam	4	<b>1.30</b>	
99	<b>R115-7039</b>	115-7039	Screw - Adjuster - Bedbar	2	<b>29.85</b>	
99	<b>R137-6130</b>	137-6130	Screw - Adjuster - Hardened - Bedbar	2	<b>34.85</b>	
100	<b>R119-4155</b>	119-4155	Washer - Hardened	2	<b>7.50</b>	
101	<b>R110-4079</b>	110-4079	Spring	1	<b>7.50</b>	
102	<b>R3296-48</b>	119-4039, 32146-7, 3296-34, 3296-48	Locknut - 7/16-14 ESNA	2	<b>0.55</b>	

All original equipment manufacturers names and part numbers are used for identification purposes only, and we are in no way implying that our products are original equipment parts. Prices subject to change without notice.



# Replaces Toro Reelmaster 5010-H Parts

Cutting Unit with 7" Reels - Models 03636, 03637, 03638,  
03639, 03641 & 03643  
Reel & Bedknife



Item No	R&R Part No.	OEM Part No.	Description	Qty Req	Price Each	Order Quantity
103	<b>R101526</b>	01-150-0970, 01-178-0620, 101526, 20-53-AGD, 321-11, 3224-8, 323-11, 323-12, 323-31, 323-4, 323-47	Bolt - Hex HD 3/8-16 x 2-1/2 GR5	10	<b>0.91</b>	
104	<b>R110-4058</b>	110-4058	Bracket - Chain	1	<b>19.40</b>	
105	<b>R107-7400</b>	107-7400	Pin - Lynch	1	<b>6.95</b>	
106	<b>R92-2762</b>	92-2762	Pin - Snap	1	<b>1.50</b>	
107	<b>R56-9520</b>	56-9520	Bushing - Nyliner	2	<b>1.55</b>	
108	<b>R61-1950</b>	61-1950	Washer - Nylon - Bed Bar	4	<b>0.64</b>	
109	<b>R108-4269-01</b>	108-4269-01	Weight	5	<b>82.65</b>	
110	<b>R106-9623</b>	106-9623	Bolt - Bedbar	2	<b>14.15</b>	
111	<b>R453017</b>	01-166-0050, 01-166-0240, 01-166-0800, 24-13-AD, 24-14-AD, 32-8110, 3256-26, 3256-6, 453017, 69-8980, 87-7270	Washer - Flat 1/2	2	<b>0.28</b>	
112	<b>R106-9618</b>	106-9618	Bushing - Rubber	2	<b>7.90</b>	
113	<b>R107-2979</b>	107-2979	Bolt - Shoulder	6	<b>3.25</b>	
114	<b>R92-2601</b>	92-2601	Snap Ring	2	<b>2.45</b>	

All original equipment manufacturers names and part numbers are used for identification purposes only, and we are in no way implying that our products are original equipment parts. Prices subject to change without notice.



# Replaces Toro Reelmaster 5010-H Parts

Cutting Unit with 7" Reels - Models 03636, 03637, 03638,  
03639, 03641 & 03643  
Reel & Bedknife



Item No	R&R Part No.	OEM Part No.	Description	Qty Req	Price Each	Order Quantity
115	<b>R115-3296</b>	115-3296	Bearing	2	<b>23.50</b>	
115	<b>R140-5510</b>	140-5510	Bearing - Sealed Stainless	2	<b>21.34</b>	
116	<b>R108-4279</b>	108-4279	Spacer - Frame	2	<b>6.75</b>	
117	<b>R93-2877</b>	93-2877	Bushing - Flanged	2	<b>3.65</b>	
118	<b>R112-6967</b>	112-6967	O-Ring	5	<b>1.95</b>	
119	<b>R87-7270-01</b>	87-7270, 87-7270-01	Washer - Flat 1/2	1	<b>0.29</b>	
120	<b>R104-8300</b>	104-8300, 104-8300 , 119-4041	Locknut - 5/16-18 Flanged Y/Zinc	4	<b>0.47</b>	
121	<b>R3230-30</b>	3230-30	Bolt - Carriage 5/16x4 1/2	4	<b>6.30</b>	
122	<b>R93-6688</b>	93-6688	Decal - Warning	1	<b>2.30</b>	
123	<b>R125-2796</b>	125-2796	Bracket- Front HOC	2	<b>36.60</b>	
<i>Tech Note: Fits 2013 &amp; Newer:</i>						
124	<b>R105-5700</b>	105-5700, 115-5258	Wave Washer - Bearing	1	<b>2.55</b>	
125	<b>R107-3258</b>	107-3258	Frame	1	<b>191.95</b>	
126	<b>R119-0626</b>	119-0626	Shim - Roller - 1/4 in - Slotted	8	<b>5.45</b>	
127	<b>R120-5120</b>	120-5120	Spring - Compression	2	<b>2.35</b>	
128	<b>R110-4088-03</b>	110-4088-03, 119-8010-03	Kickstand	1	<b>21.25</b>	
129	<b>R115-3299</b>	115-3299	Seal- Flocked	2	<b>11.40</b>	
130	<b>R32128-43</b>	30-8990, 32128-43, 3290-357	Nut - Flanged Whiz - 3/8-16	7	<b>0.62</b>	

All original equipment manufacturers names and part numbers are used for identification purposes only, and we are in no way implying that our products are original equipment parts. Prices subject to change without notice.





## Replaces Toro Reelmaster 5010-H Parts

Cutting Unit with 7" Reels - Models 03636, 03637, 03638,  
03639, 03641 & 03643  
Reel & Bedknife



Item No	R&R Part No.	OEM Part No.	Description	Qty Req	Price Each	Order Quantity
131	<b>R107-7433</b>	107-7433	Carrier Frame Assy	1	<b>262.35</b>	
132	<b>R108-4284</b>	108-4284	Shaft - Support	1	<b>32.70</b>	
133	<b>R127-7109</b>	127-7109	Insert-Threaded - 7 in Reel (RH)	1	<b>25.40</b>	
134	<b>R127-7111</b>	127-7111	Insert-Threaded - 7 in Reel (LH)	1	<b>25.40</b>	
135	<b>R137-5967</b>	137-5967	Side Plate Assy - 7 in RH Aluminum	1	<b>211.60</b>	
136	<b>R137-5963</b>	137-5963, 137-5967	Side Plate Assy - 7 in LH Aluminum	1	<b>211.60</b>	
137	<b>R170714</b>	302-34, 302-39, 62-3520	Fitting - Pressure Relief	2	<b>2.25</b>	
139	<b>R117-8177</b>	117-8177	O-Ring	2	<b>2.45</b>	
140	<b>R3245-35</b>	3245-35	Screw - Set 1/4-28 x 1/4	2	<b>0.57</b>	
141	<b>R125-1978</b>	125-1978	Grass Shield - Rear	1	<b>47.05</b>	

All original equipment manufacturers names and part numbers are used for identification purposes only, and we are in no way implying that our products are original equipment parts. Prices subject to change without notice.