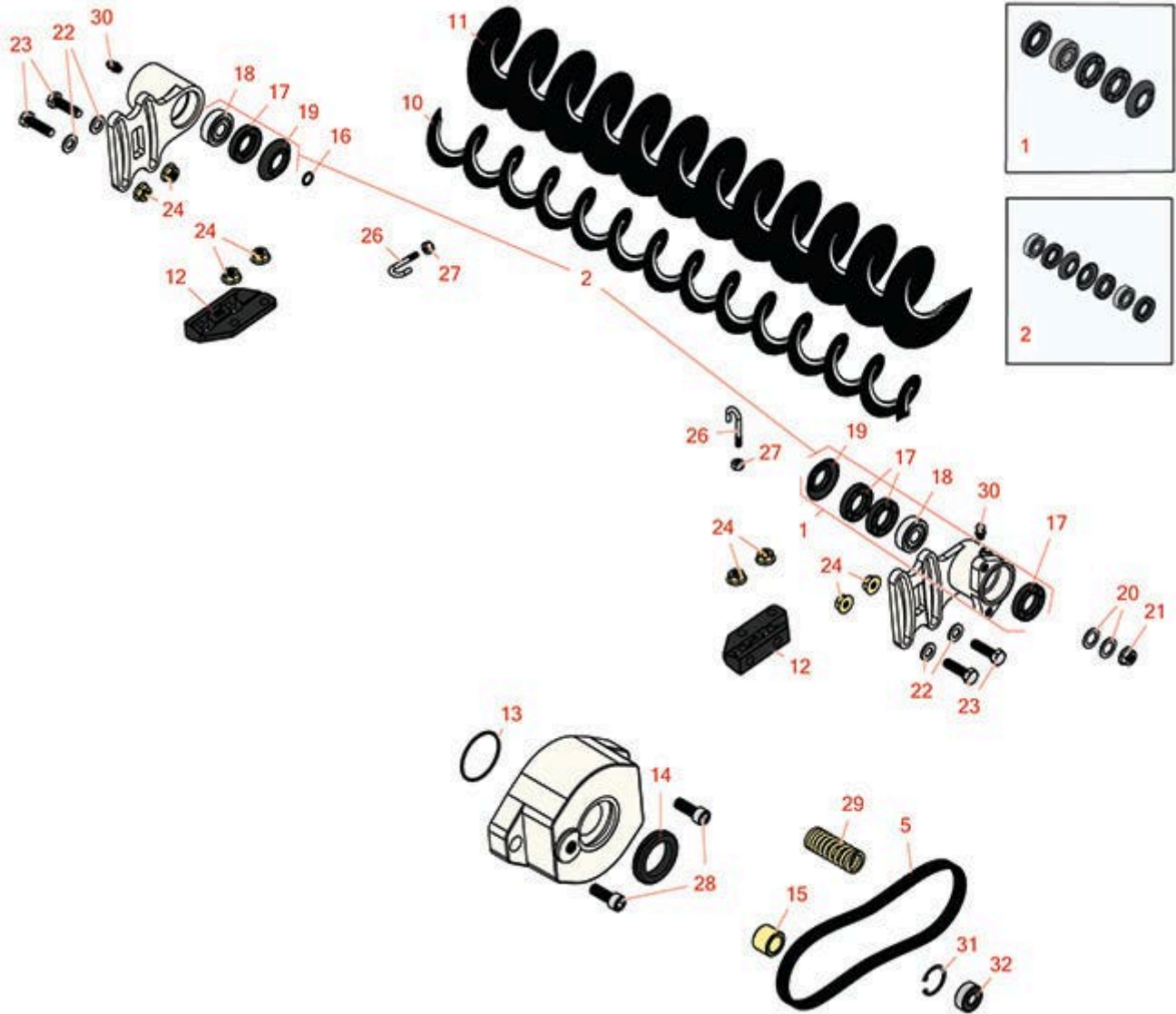




Replaces Toro Reelmaster 5010-H Parts

Cutting Unit with 7" Reels - Models 03636, 03637, 03638,
03639, 03641 & 03643

Rear Roller Brush



All original equipment manufacturers names and part numbers are used for identification purposes only, and we are in no way implying that our products are original equipment parts. Prices subject to change without notice.



Replaces Toro Reelmaster 5010-H Parts

Cutting Unit with 7" Reels - Models 03636, 03637, 03638,
03639, 03641 & 03643

Rear Roller Brush



Item No	R&R Part No.	OEM Part No.	Description	Qty Req	Price Each	Order Quantity
Overhaul Kit						
1	R110-4086	110-4086	Kit - Bearing	1	54.10	
<i>Tech Note: Includes 1 ea: R95-0707 Bearing, R108-4172 Seal; & 3 ea: R106-8530 Seal:</i>						
2	R131-3233	131-3233	Groomer/Rrb Seal Kit	1	75.15	
Belts						
5	R115-0833	115-0833	Belt- Brush 7 in	1	23.30	
Other Parts Available						
10	R108-4193	108-4193	Brush - Roller - 2 OD	1	56.05	
11	R110-1740	110-1740	Brush-Roller (High HOC) 3.5 in OD	1	55.90	
12	R108-4480	108-4480	Bracket - Rear Roller Brush	2	18.80	
13	R112-6967	112-6967	O-Ring	1	1.95	
14	R240-7	240-7	Grommet - Rubber - 2 in OD	1	9.30	
15	R108-4477	108-4477	Spacer	1	10.15	
16	R237-22	107-8844, 237-22, 237-78	O-Ring	1	0.62	
17	R106-8530	106-8530	Seal - Oil	5	9.05	
18	R95-0707	95-0707	Bearing - Self Aligning	2	24.85	
19	R108-4172	108-4172	Seal - Excluder	2	5.15	
20	R112-6957	112-6957	Washer - Hardened	2	1.25	
21	R104-8301	104-8301, 104-9301, 109-6658, 133-7570	Locknut - 3/8-16 Nylon Flanged	1	0.84	

All original equipment manufacturers names and part numbers are used for identification purposes only, and we are in no way implying that our products are original equipment parts. Prices subject to change without notice.



Replaces Toro Reelmaster 5010-H Parts

Cutting Unit with 7" Reels - Models 03636, 03637, 03638,
03639, 03641 & 03643

Rear Roller Brush



Item No	R&R Part No.	OEM Part No.	Description	Qty Req	Price Each	Order Quantity
22	R94-6936	94-6936, 94-9236	Washer - Hardened - 5/16 SAE	4	0.57	
23	R322-16	322-16, Apr-00	Bolt - Hex HD 5/16-18 x 1-1/8	4	1.65	
24	R104-8300	104-8300, 104-8300 , 119-4041	Locknut - 5/16-18 Flanged Y/Zinc	8	0.47	
26	R105-9632	105-9632	Bolt - J	2	7.50	
27	R3296-2	32127-10, 3296-2, 9157404	Nut - #10 Lock	2	0.94	
28	R3274-7	3247-7, 3274-7	Bolt - Soc HD Cap 3/8-16 x 1	2	1.40	
29	R115-0839	115-0839	Spring - Idler - SS	1	5.15	
30	R302-5	21-6010, 302-11, 302-37, 302-47, 302-5, 302-57, 302-58, 302-6, 31-0300, 32-9660, 60-0800, 62-3880, 92-4181	Fitting - Grease	2	0.27	
31	R32151-60	32151-60	Ring - Snap	1	1.05	
32	R110-1701	110-1701	Bearing	1	12.50	

All original equipment manufacturers names and part numbers are used for identification purposes only, and we are in no way implying that our products are original equipment parts. Prices subject to change without notice.