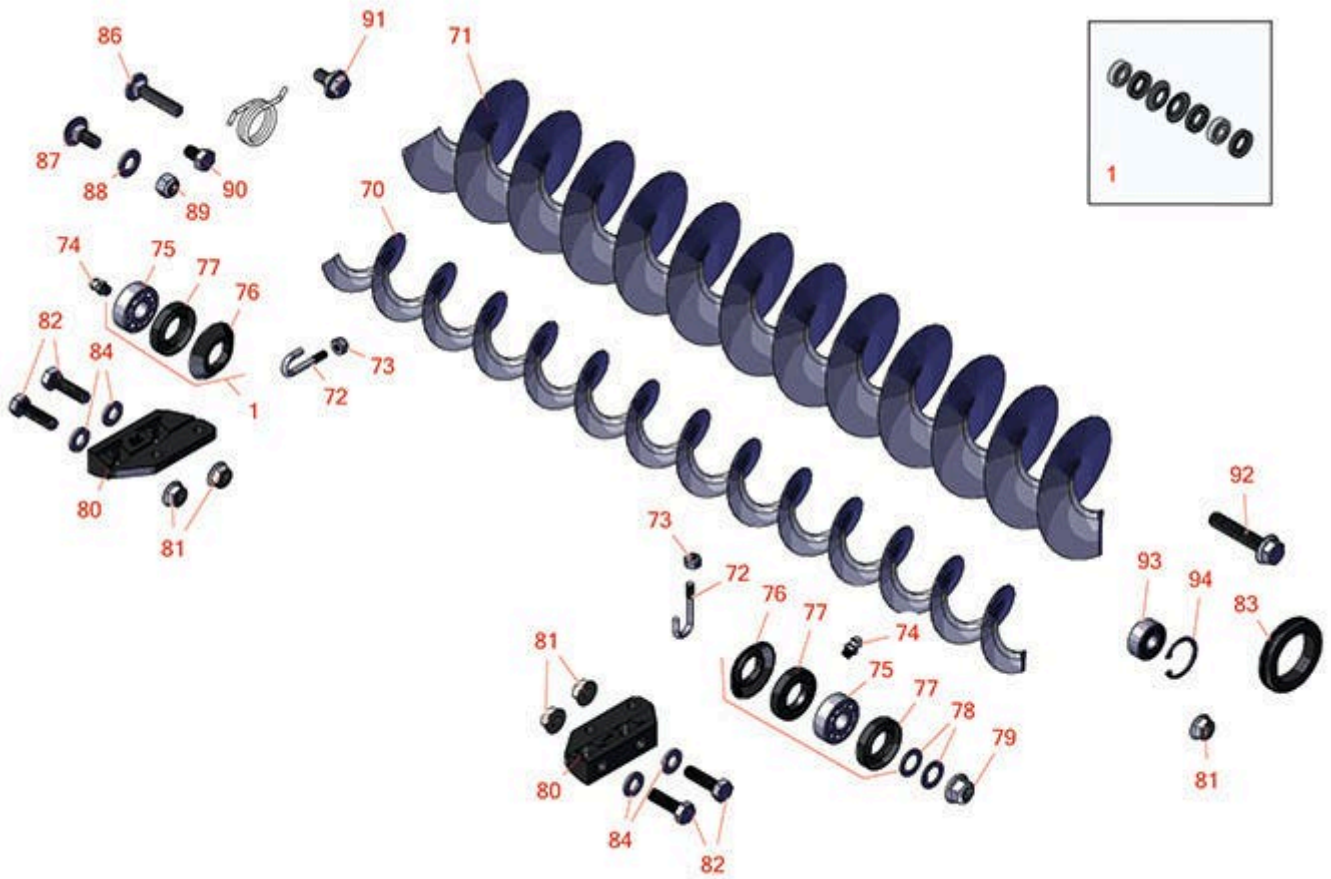




Replaces Toro Reelmaster 5010-H Parts

Cutting Unit with 5" Reels - Models 03621, 03623, 03634 & 03635

Rear Roller Brush



All original equipment manufacturers names and part numbers are used for identification purposes only, and we are in no way implying that our products are original equipment parts. Prices subject to change without notice.



Replaces Toro Reelmaster 5010-H Parts

Cutting Unit with 5" Reels - Models 03621, 03623, 03634 & 03635

Rear Roller Brush



Item No	R&R Part No.	OEM Part No.	Description	Qty Req	Price Each	Order Quantity
Overhaul Kit						
1	R131-3233	131-3233	Groomer/Rrb Seal Kit	1	75.15	
Other Parts Available						
70	R108-4193	108-4193	Brush - Roller - 2 OD	5	56.05	
71	R110-1740	110-1740	Brush-Roller (High HOC) 3.5 in OD	5	55.90	
72	R105-9632	105-9632	Bolt - J	10	7.50	
73	R3296-2	32127-10, 3296-2, 9157404	Nut - #10 Lock	10	0.94	
74	R302-5	21-6010, 302-11, 302-37, 302-47, 302-5, 302-57, 302-58, 302-6, 31-0300, 32-9660, 60-0800, 62-3880, 92-4181	Fitting - Grease	10	0.27	
75	R95-0707	95-0707	Bearing - Self Aligning	10	24.85	
76	R108-4172	108-4172	Seal - Excluder	10	5.15	
77	R106-8530	106-8530	Seal - Oil	15	9.05	
78	R112-6957	112-6957	Washer - Hardened	10	1.25	
79	R104-8301	104-8301, 104-9301, 109-6658, 133-7570	Locknut - 3/8-16 Nylon Flanged	5	0.84	
80	R108-4480	108-4480	Bracket - Rear Roller Brush	10	18.80	

All original equipment manufacturers names and part numbers are used for identification purposes only, and we are in no way implying that our products are original equipment parts. Prices subject to change without notice.



Replaces Toro Reelmaster 5010-H Parts

Cutting Unit with 5" Reels - Models 03621, 03623, 03634 & 03635

Rear Roller Brush



Item No	R&R Part No.	OEM Part No.	Description	Qty Req	Price Each	Order Quantity
81	R104-8300	104-8300, 104-8300 , 119-4041	Locknut - 5/16-18 Flanged Y/Zinc	20	0.47	
82	R322-16	322-16, Apr-00	Bolt - Hex HD 5/16-18 x 1-1/8	20	1.65	
83	R240-7	240-7	Grommet - Rubber - 2 in OD	5	9.30	
84	R94-6936	94-6936, 94-9236	Washer - Hardened - 5/16 SAE	20	0.57	
86	R112-6950	112-6950, 3230-27	Bolt - Carriage 5/16-18 x 1-1/2	15	1.20	
87	R3230-23	3230-23, Mar-61	Bolt - 5/16-18x3/4 - Carriage	10	0.70	
88	R3256-45	3256-45	Washer - Flat .733 x .381 x .058 YZ	20	0.36	
89	R3296-47	3296-47	Locknut - 5/16-18 Jam Nyloc	30	0.59	
90	R322-1	01-178-0504, 20-22-AD, 20-22-AGD, 322-1, 513337	Bolt - Hex HD 5/16-18 x 1/2	10	0.47	
91	R27-0411	27-0411	Bolt - Shoulder	5	10.45	
92	R66-9302	3234-20, 66-9302	Screw - HHF, Whiz	5	2.85	
93	R110-1701	110-1701	Bearing	5	12.50	
94	R32151-60	32151-60	Ring - Snap	5	1.05	

All original equipment manufacturers names and part numbers are used for identification purposes only, and we are in no way implying that our products are original equipment parts. Prices subject to change without notice.