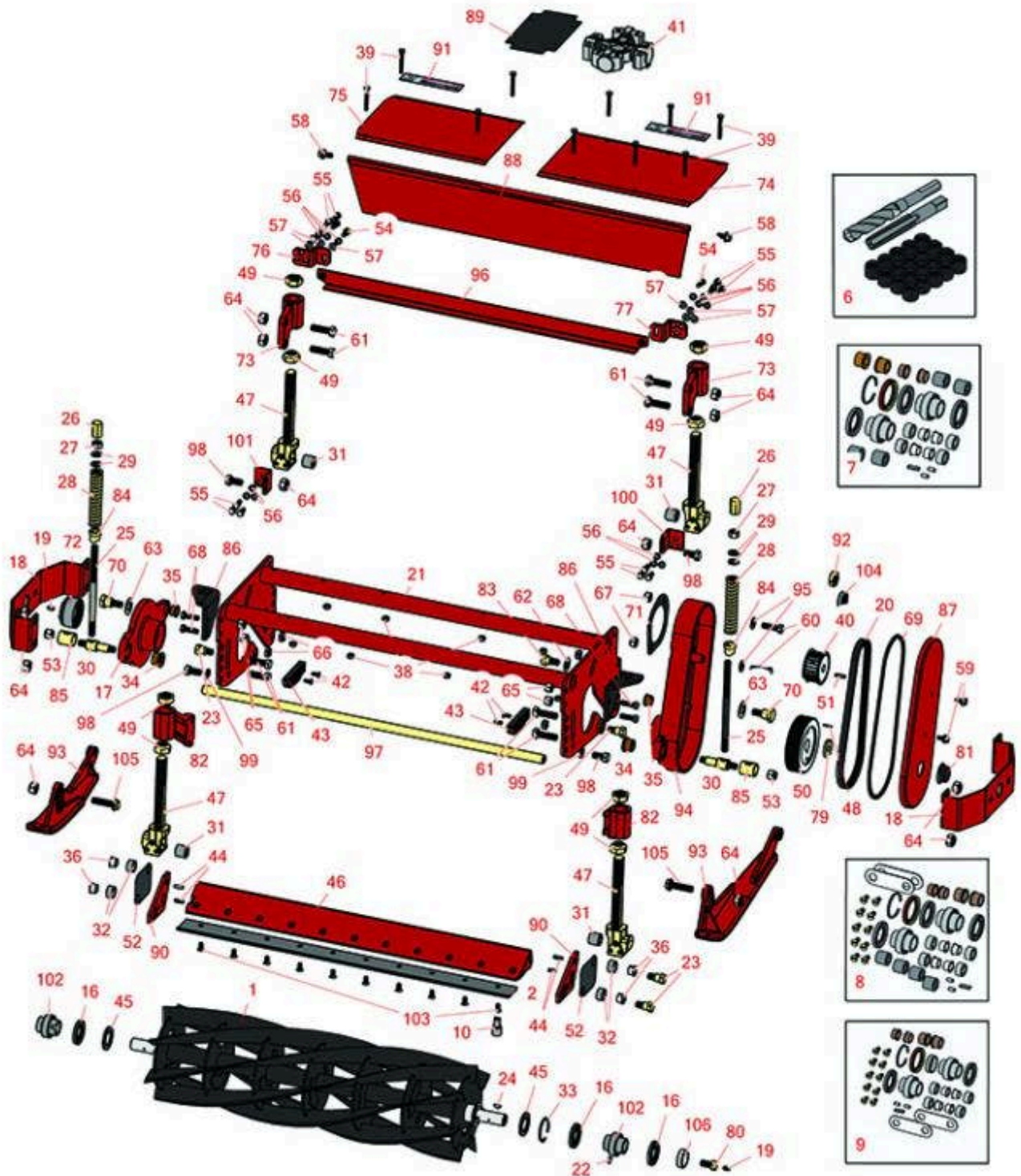




# Replaces Toro Reelmaster 450-D Parts

Cutting Unit  
Reel & Bedknife



All original equipment manufacturers names and part numbers are used for identification purposes only, and we are in no way implying that our products are original equipment parts. Prices subject to change without notice.



# Replaces Toro Reelmaster 450-D Parts

Cutting Unit  
Reel & Bedknife



Item No	R&R Part No.	OEM Part No.	Description	Qty Req	Price Each	Order Quantity
---------	--------------	--------------	-------------	---------	------------	----------------

## R&R Reels, Lifetime Guaranteed

1	<b>R13-8229</b>	12-4459, 13-8229, 14-7419	Reel - 5 Blade	1	<b>327.55</b>	
1	<b>R13-8219</b>	12-4469, 13-8219	Reel - 7 Blade	1	<b>361.30</b>	
1	<b>R14-0919</b>	14-0919	Reel - 11 Blade	1	<b>389.55</b>	

## R&R Bedknives, Lifetime Guaranteed

2	<b>R72-0480</b>	72-0480	Bedknife - High Cut	1	<b>44.95</b>	
<i>Tech Note: Use with 5 Blade Reel:</i>						
2	<b>R59-5890</b>	59-5890	Bedknife	1	<b>48.15</b>	
<i>Tech Note: Use with 7 Blade Reel:</i>						
2	<b>R76-3620</b>	76-3620	Bedknife	1	<b>53.55</b>	
<i>Tech Note: Use with 11 Blade Reel:</i>						

## Overhaul Kits & Service Tools

6	<b>R150530</b>		Repair Kit - Bed Bar	1	<b>242.75</b>	
<i>Tech Note: Includes 20 ea: R150531 Insert; 1 ea: R150532 Drill, R150533 Tap:</i>						
7	<b>R150540</b>		Overhaul Kit - Cutting Unit	0	<b>203.40</b>	
<i>Tech Note: Includes 4 ea.: R256-292 Bushings, R59-5780 Bushings, R62-6110 Bushings; 3 ea: R253-145 Seals; 2 ea: R256-252 Bushings, R48-8880 Pins, R59-6140 Bearings, R72-0430 Bushings; 1 ea: R32151-71 Ring, R75-7570 Key &amp; R92-9250 Seal:</i>						
8	<b>R13-3679</b>	13-3679	Overhaul Kit - Cutting Unit	0	<b>146.70</b>	
<i>Tech Note: Includes 10 ea: R150476 Screws; 4 ea: R256-292 Bushings; R62-6110; 3 ea: R253-145 Seals; 2 ea: R256-113 Bushings, R256-252 Bushings, R48-8880 Pins, R48-9240 Spacers, R59-6140 Bearings, R72-0430 Bushings; 1 ea: R32151-71 Ring, R32... &lt;Click Part# for more&gt;:</i>						

All original equipment manufacturers names and part numbers are used for identification purposes only, and we are in no way implying that our products are original equipment parts. Prices subject to change without notice.



# Replaces Toro Reelmaster 450-D Parts

Cutting Unit  
Reel & Bedknife



Item No	R&R Part No.	OEM Part No.	Description	Qty Req	Price Each	Order Quantity
9	<b>R95-4389</b>	14-2099, 95-4389	Overhaul Kit - Cutting Unit	0	<b>165.95</b>	
<i>Tech Note: Includes 10 ea: R150476 Screw; 4 ea: R256-292 Bushing, R62-6110 Bushing; 2 ea: R256-252 Bushing, R48-8880 Pin, R59-6140 Bearing, R48-9240 Spacer, R92-9252 Bushing, R253-145 Seal; 1 ea: R32151-71 Ring, R75-7570 Key, R92-9250 Seal, R92-9251 Sleeve:</i>						
10	<b>R51-0880</b>	51-0880	Bedknife Screw Driver Tool	0	<b>35.65</b>	
<b>Other Parts Available</b>						
16	<b>R253-145</b>	253-145	Seal - Oil Reel Assy	1	<b>4.70</b>	
16	<b>R92-9250</b>	92-9250	Seal - Reel	1	<b>6.45</b>	
17	<b>R59-5550</b>	59-5550	Housing - Bearing	1	<b>92.50</b>	
18	<b>R72-0470</b>	72-0470	Guard	1	<b>32.65</b>	
19	<b>R302-5</b>	21-6010, 302-11, 302-37, 302-47, 302-5, 302-57, 302-58, 302-6, 31-0300, 32-9660, 60-0800, 62-3880, 92-4181	Fitting - Grease	3	<b>0.27</b>	
20	<b>R150520</b>	47-7160	Belt - Cutting Unit	1	<b>22.35</b>	
21	<b>R14-0829</b>	14-0829, 59-6480	Frame - Cutting Unit	1	<b>269.80</b>	
22	<b>R48-8880</b>	48-8880	Pin - Reel Bearing	2	<b>1.25</b>	
23	<b>R66-5570</b>	62-6100, 66-5570, 84-6090	Bolt - Shoulder Bed Bar	4	<b>5.45</b>	
24	<b>R75-7570</b>	75-7570	Key - Reel 5/32 x 1/4 x.900	1	<b>3.65</b>	

All original equipment manufacturers names and part numbers are used for identification purposes only, and we are in no way implying that our products are original equipment parts. Prices subject to change without notice.



# Replaces Toro Reelmaster 450-D Parts

Cutting Unit  
Reel & Bedknife



Item No	R&R Part No.	OEM Part No.	Description	Qty Req	Price Each	Order Quantity
25	<b>R72-0390</b>	72-0390	Rod - Bedknife Adjusting	2	<b>17.50</b>	
26	<b>R72-0380</b>	72-0380	Hex - Bedknife Adjuster	2	<b>5.15</b>	
27	<b>R443818</b>	01-191-0813, 3218-18, 3218-5, 3248-18	Nut - 1/2-13 Hex Jam Zinc	2	<b>0.35</b>	
28	<b>R72-0400</b>	72-0400, 92-9231	Spring - Bed Bar Adj	2	<b>16.95</b>	
29	<b>R257-5</b>	257-5	Washer - Thrust	4	<b>1.85</b>	
30	<b>R72-0440</b>	72-0440	Pin - Pivot - Bedknife Adj.	2	<b>17.35</b>	
31	<b>R59-5780</b>	59-5780	Bushing - Roller Bracket	4	<b>6.25</b>	
32	<b>R62-6110</b>	62-6110	Bushing - Rubber For Bed Bar	4	<b>6.30</b>	
33	<b>R32151-71</b>	32151-71	Ring - Snap Reel Brg	1	<b>2.55</b>	
34	<b>R72-0430</b>	72-0430	Bushing - Adj Pin - 5/8 ID x 1 1/8 Flange	2	<b>3.40</b>	
34	<b>R92-9252</b>	92-9252	Bushing - 5/8 ID x 1 1/4 Flange	2	<b>5.15</b>	
35	<b>R256-252</b>	256-252	Bushing - 3/4 ID x 1 Flange	2	<b>4.80</b>	
36	<b>R256-292</b>	104-7738, 256-292	Bushing - Nyliner Bed Bar	4	<b>1.50</b>	
38	<b>R301504</b>	2296-42, 301504, 32127-24, 32128-33, 32146-17, 3296-16, 3296-42, 3296-42 , 915661P	Locknut - ESNA 1/4-20	10	<b>0.18</b>	

All original equipment manufacturers names and part numbers are used for identification purposes only, and we are in no way implying that our products are original equipment parts. Prices subject to change without notice.



# Replaces Toro Reelmaster 450-D Parts

Cutting Unit  
Reel & Bedknife



Item No	R&R Part No.	OEM Part No.	Description	Qty Req	Price Each	Order Quantity
39	<b>R3234-34</b>	321-11, 323-12, 3234-34	Bolt - Hex Washer 1/4 x 2	10	<b>0.67</b>	
39	<b>R400120</b>	01-150-0990, 01-178-0416, 02-150-0990, 321-11, 3222-4, 33114-010, 33114-060, 513327, 908470	Bolt - Hex HD 1/4-20 x 2	0	<b>0.79</b>	
40	<b>R47-7150</b>	47-7150	Pulley - Belt Drive	1	<b>119.60</b>	
41	<b>R59-5910</b>	59-5910	U-Joint	1	<b>116.85</b>	
42	<b>R301503</b>	32108-101	Screw - 1/4-20 x 5/8 Mach	4	<b>0.29</b>	
43	<b>R77-4810</b>	62-6070, 77-4810	Block - Deflector	2	<b>6.30</b>	
44	<b>R32121-11</b>	32121-11	Pin - Roll 1/4 x 3/4	4	<b>0.34</b>	
45	<b>R38-7330</b>	38-7330	Shield - Grass	2	<b>4.60</b>	
46	<b>R59-5470</b>	59-5470, 59-5470-01	Backing Bar - Bed Knife	1	<b>221.60</b>	
46	<b>R77-4340</b>	77-4330, 77-4340, 77-4340-01	Backing Bar - 11 Blade Reel	1	<b>273.45</b>	
47	<b>R84-6100</b>	59-5700, 84-6100	Bracket - Roller w/Rubber Bushing	4	<b>67.25</b>	
47	<b>R84-6100S</b>		Bracket - Roller w/o Bush 562 ID	4	<b>76.55</b>	
48	<b>R32121-50</b>	32121-50	Pin - Roll Spiral Lock 1/8 1147	1	<b>1.20</b>	
49	<b>R59-5820</b>	59-5820	Nut - Cone Roller Adj Bkt	8	<b>8.75</b>	

All original equipment manufacturers names and part numbers are used for identification purposes only, and we are in no way implying that our products are original equipment parts. Prices subject to change without notice.



# Replaces Toro Reelmaster 450-D Parts

Cutting Unit  
Reel & Bedknife



Item No	R&R Part No.	OEM Part No.	Description	Qty Req	Price Each	Order Quantity
50	<b>R47-7140</b>	47-7140	Pulley - Driven Timing Belt	1	<b>113.95</b>	
51	<b>R47-2380</b>	47-2380	Key - Drive Pulley	1	<b>1.40</b>	
52	<b>R48-9240</b>	48-9240, 76-3580	Spacer - Shim Bed Bar	0	<b>1.45</b>	
53	<b>R32128-15</b>	32128-15, 3290-229	Locknut - 1/2-20 Flanged	4	<b>3.85</b>	
54	<b>R322-3</b>	01-150-1420, 01-178-0506, 20-24-AD, 20-24-AGD, 322-3, 48-9270, 513339, 908017P	Bolt - Hex HD 5/16-18 x 3/4	2	<b>0.62</b>	
55	<b>R400184</b>	322-2, 322-3	Screw - 5/16-18 x 3/4 Hex	6	<b>0.62</b>	
56	<b>R3253-4</b>	01-166-0110, 01-166-0510, 23-10-GD, 24-7170, 30-8520, 3253-4, 42-9850, 48-9350, 48-9360, 48-9570, 68-9420, 99-7577	Washer - Lock 5/16 Zinc	8	<b>0.14</b>	

All original equipment manufacturers names and part numbers are used for identification purposes only, and we are in no way implying that our products are original equipment parts. Prices subject to change without notice.



# Replaces Toro Reelmaster 450-D Parts

Cutting Unit  
Reel & Bedknife



Item No	R&R Part No.	OEM Part No.	Description	Qty Req	Price Each	Order Quantity
57	<b>R453009</b>	01-166-0400, 24-10-BD, 24-9-AD, 32-9650, 3256-2, 3256-23, 3256-3, 3256-67, 3290-217, 3556-3, 4-2390, 7-0152	Washer - Flat 5/16 SAE	8	<b>0.13</b>	
58	<b>R3234-12</b>	3234-12	Bolt - Hex Serrated Washer HD	2	<b>1.10</b>	
59	<b>R3234-14</b>	3234-14, 3234-23	Bolt - Hex Serrated Washer HD	2	<b>0.83</b>	
60	<b>R324-6</b>	01-150-1690, 01-178-0712, 20-68-AGD, 3225-3, 324-6	Bolt - Hex HD 7/16-14 x 1-1/2	2	<b>0.90</b>	
61	<b>R325-7</b>	01-150-0380, 01-178-0814, 3226-3, 325-7, 48-9490	Bolt - 1/2-13 x 1 3/4 Hex HD Gr 5	4	<b>0.84</b>	
62	<b>R3256-69</b>	3256-69	Washer - Flat	1	<b>0.41</b>	
63	<b>R3290-440</b>	3290-440	Washer - Belleville	2	<b>4.35</b>	
64	<b>R3296-25</b>	30-3380, 32127-21, 32127-31, 3290-160, 3290-33, 3296-13, 3296-25, 3296-45, 329645	Locknut - 1/2-13 Heavy ESNA	4	<b>2.15</b>	

All original equipment manufacturers names and part numbers are used for identification purposes only, and we are in no way implying that our products are original equipment parts. Prices subject to change without notice.



# Replaces Toro Reelmaster 450-D Parts

Cutting Unit  
Reel & Bedknife



Item No	R&R Part No.	OEM Part No.	Description	Qty Req	Price Each	Order Quantity
65	<b>R3296-26</b>	3296-26	Locknut - 3/8-16 ESNA Heavy	4	<b>2.55</b>	
66	<b>R3296-28</b>	119-4154, 140-9234, 32127-34, 32128-7, 32128-8, 32136-7, 3296-28	Nut - 1/2-20 ESNA Jam	2	<b>1.25</b>	
67	<b>R3296-48</b>	119-4039, 32146-7, 3296-34, 3296-48	Locknut - 7/16-14 ESNA	2	<b>0.55</b>	
68	<b>R400264</b>	01-150-0180, 01-178-0610, 20-48-AD, 20-48-AGD, 32-9160, 3224-3, 323-29, 323-7, 400264, 908035P	Bolt - Hex HD 3/8-16 x 1-1/4	4	<b>0.40</b>	
69	<b>R47-7170</b>	47-7170	Gasket - Cover	1	<b>11.15</b>	
70	<b>R48-9020</b>	48-9020	Bolt - Shoulder 1/2-20	2	<b>6.45</b>	
71	<b>R48-9050</b>	48-9050	Plate - Drive	1	<b>11.30</b>	
72	<b>R59-5560</b>	59-5560	Cap - Dust	1	<b>14.15</b>	
73	<b>R59-5770</b>	59-5770	Bracket - Rear Roller	2	<b>43.35</b>	
74	<b>R59-5830</b>	59-5830, 59-5830-01	Cover - Inner Grass Shield	1	<b>13.60</b>	
75	<b>R59-5840</b>	59-5840	Cover - Outer Grass Shield	1	<b>22.95</b>	
76	<b>R59-6070</b>	59-6070	Bracket - Scraper RH	1	<b>7.05</b>	
77	<b>R59-6080</b>	59-6080	Bracket - Scraper LH	1	<b>7.05</b>	

All original equipment manufacturers names and part numbers are used for identification purposes only, and we are in no way implying that our products are original equipment parts. Prices subject to change without notice.





# Replaces Toro Reelmaster 450-D Parts

*Cutting Unit  
Reel & Bedknife*



Item No	R&R Part No.	OEM Part No.	Description	Qty Req	Price Each	Order Quantity
79	<b>R59-6150</b>	59-6150	Washer - Reel Pulley	1	<b>3.85</b>	
80	<b>R59-6190</b>	59-6190	Bolt - Reel Special	1	<b>8.15</b>	
81	<b>R59-7490</b>	59-7490	Caplug	1	<b>1.45</b>	
82	<b>R62-5960</b>	62-5960	Bracket - LH Roller	2	<b>36.80</b>	
82	<b>R62-5980</b>	62-5980	Bracket - RH Roller	2	<b>36.80</b>	
82	<b>R84-6040</b>	84-6040	Bracket - RH Roller	2	<b>34.45</b>	
82	<b>R84-6050</b>	84-6050	Bracket - LH Roller	2	<b>34.45</b>	
83	<b>R62-6080</b>	62-6080	Bolt - Shoulder	1	<b>6.40</b>	
84	<b>R72-0410</b>	72-0410	Stand - Off	2	<b>10.65</b>	
85	<b>R72-0420</b>	72-0420	Tube - Clamp	2	<b>11.15</b>	
86	<b>R72-0450</b>	72-0450	Bracket - RH Bedknife Adj	1	<b>24.65</b>	
86	<b>R72-0460</b>	72-0460	Bracket - LH Bedknife Adj	1	<b>24.65</b>	
87	<b>R75-7580</b>	75-7580, 75-7580-01	Cover - Drive RH	1	<b>25.60</b>	
87	<b>R75-7590</b>	75-7590, 75-7590-01	Cover - Drive LH	1	<b>25.60</b>	
88	<b>R75-7680</b>	51-1600, 52-9660, 75-7680, 75-7680-01	Deflector	1	<b>48.60</b>	
89	<b>R75-8100</b>	75-8100	Cover - Center	1	<b>3.85</b>	
90	<b>R76-3600</b>	76-3600	Plate - LH End - Bed Bar	1	<b>36.40</b>	
90	<b>R76-3610</b>	76-3610	Plate - RH End Bed Bar	1	<b>36.40</b>	
91	<b>R76-8760</b>	76-8760	Decal	2	<b>4.75</b>	

All original equipment manufacturers names and part numbers are used for identification purposes only, and we are in no way implying that our products are original equipment parts. Prices subject to change without notice.



# Replaces Toro Reelmaster 450-D Parts

Cutting Unit  
Reel & Bedknife



Item No	R&R Part No.	OEM Part No.	Description	Qty Req	Price Each	Order Quantity
92	<b>R82-9390</b>	82-9390	Nut - Special Drive Housing	2	<b>5.90</b>	
93	<b>R84-0810</b>	59-5990, 84-0810	Skid - LH	1	<b>66.25</b>	
93	<b>R84-0820</b>	59-5980, 84-0820	Skid - RH	1	<b>66.25</b>	
94	<b>R92-6098</b>	92-6098	Housing - RH	1	<b>254.55</b>	
94	<b>R92-6099</b>	92-6099	Housing - Drive LH	1	<b>254.55</b>	
95	<b>R187-0</b>	3256-25, 7-0032	Washer - Flat 7/16 SAE	1	<b>0.22</b>	
96	<b>R150521</b>		Bar - Scraper	1	<b>49.20</b>	
97	<b>R93-7769</b>	93-7769	Rod - Support	1	<b>23.75</b>	
98	<b>R325-4</b>	01-150-0280, 01-178-0806, 01-178-0808, 20-85-AD, 20-85-AGD, 325-1, 325-2, 325-4	Bolt - Hex HD 1/2-13 x 1	2	<b>0.90</b>	
99	<b>R3253-7</b>	01-166-0030, 01-166-0080, 01-166-0290, 01-166-0810, 23-13-GD, 3253-7, 48-9380	Washer - Lock 1/2	2	<b>0.13</b>	
100	<b>R59-6000</b>	59-6000	Bracket - Skid RH	1	<b>8.45</b>	
101	<b>R59-6010</b>	59-6010	Bracket - Skid LH	1	<b>8.45</b>	
102	<b>R59-6140</b>	251-298, 48-8860, 59-6140	Bearing - Reel	2	<b>41.55</b>	

All original equipment manufacturers names and part numbers are used for identification purposes only, and we are in no way implying that our products are original equipment parts. Prices subject to change without notice.



# Replaces Toro Reelmaster 450-D Parts

*Cutting Unit  
Reel & Bedknife*



Item No	R&R Part No.	OEM Part No.	Description	Qty Req	Price Each	Order Quantity
103	<b>R150475</b>	3-6462, 3-6642	Screw - Bedknife Stainless 5/16-18 x 5/8	0	<b>0.52</b>	
103	<b>R150476</b>	3-3816, 3-6462, 52-4910, 57-4910	Screw - Bedknife 5/16-18 x 5/8	0	<b>0.29</b>	
104	<b>R66-5710</b>	117-8976, 66-5710	Seal - Hyd Motor Shaft	1	<b>31.85</b>	
105	<b>R3234-27</b>	3234-27	Bolt - 1/2-13 x 2 Hex	2	<b>5.35</b>	
106	<b>R92-9251</b>	92-9251	Sleeve - Wear Reel Bearing	1	<b>10.15</b>	

All original equipment manufacturers names and part numbers are used for identification purposes only, and we are in no way implying that our products are original equipment parts. Prices subject to change without notice.