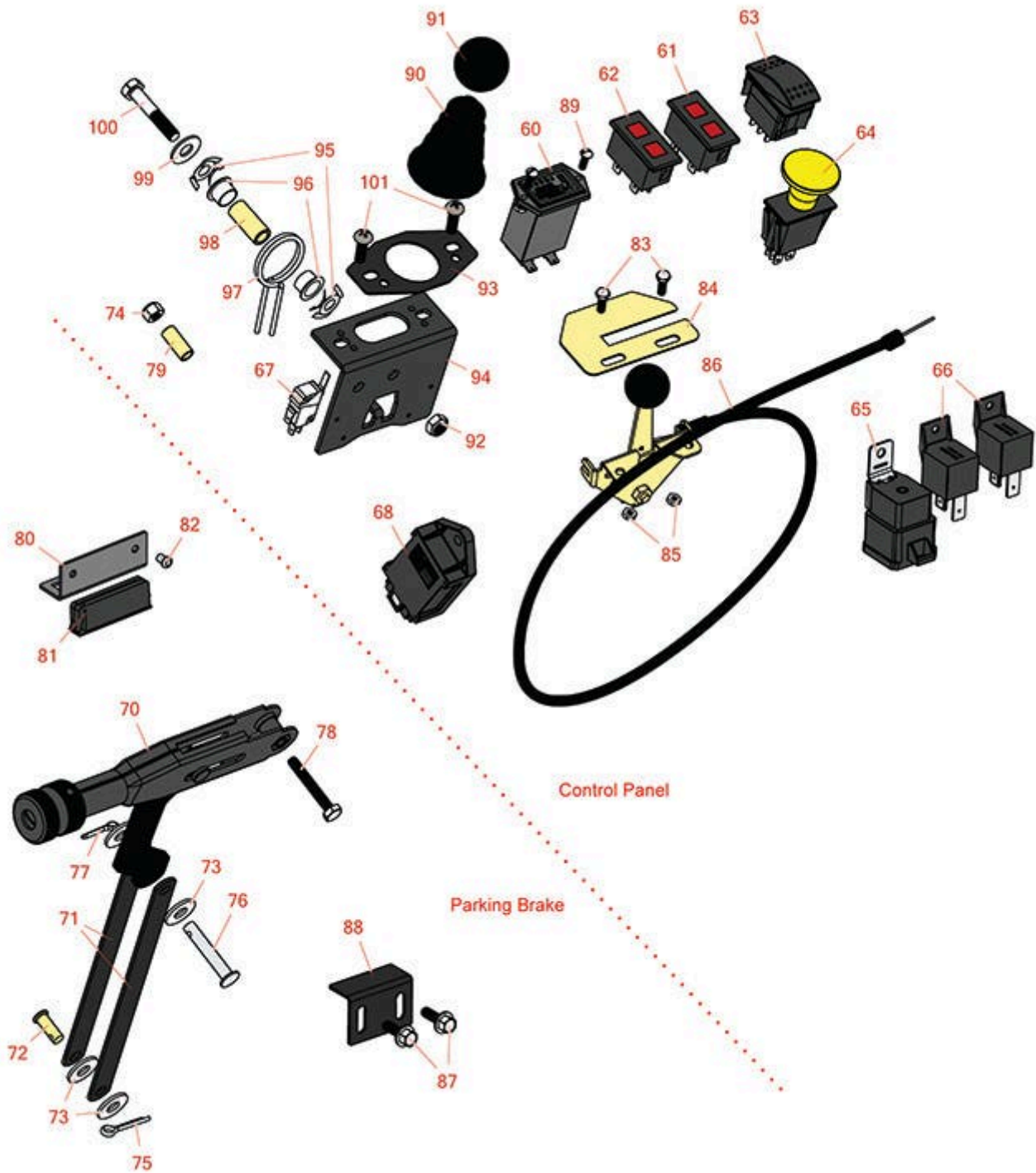




# Replaces Toro Reelmaster 3555-D Parts

Traction Unit

Control Panel, Hyd Valve & Parking Brake



All original equipment manufacturers names and part numbers are used for identification purposes only, and we are in no way implying that our products are original equipment parts. Prices subject to change without notice.



# Replaces Toro Reelmaster 3555-D Parts

*Traction Unit*

*Control Panel, Hyd Valve & Parking Brake*



Item No	R&R Part No.	OEM Part No.	Description	Qty Req	Price Each	Order Quantity
<b>Gauges and Controls</b>						
60	<b>R75-6820</b>	75-6820	Meter - Hour - Quartz	1	<b>59.85</b>	
61	<b>R100-8071</b>	100-8071	Lamp - Warning	1	<b>22.35</b>	
62	<b>R100-8070</b>	100-8070	Lamp - Warning	1	<b>22.35</b>	
63	<b>R95-8999</b>	95-8999	Switch - Headlight	1	<b>28.80</b>	
64	<b>R93-9999</b>	93-9999	Switch - Pto	1	<b>31.75</b>	
65	<b>R99-7430</b>	99-7430	Relay - 30 Amp	1	<b>15.05</b>	
66	<b>R99-7435</b>	99-7435	Relay - 70 Amp	2	<b>21.90</b>	
67	<b>R108-6496</b>	108-6496	Micro Switch w/Boot	2	<b>11.30</b>	
68	<b>RX1709565660</b>	98-7611, 99-3463, 99-7611	Kubota Controller	1	<b>168.60</b>	
<b>Other Parts Available</b>						
70	<b>R104-4817</b>	104-4817	Lever - Brake	1	<b>92.30</b>	
71	<b>R104-4628-03</b>	104-4628-03	Link - Parking Brake	2	<b>11.70</b>	
72	<b>R283-62</b>	283-62	Pin - Clevis 5/16 x 3/4	1	<b>0.74</b>	
73	<b>R453009</b>	01-166-0400, 24-10-BD, 24-9-AD, 32-9650, 3256-2, 3256-23, 3256-3, 3256-67, 3290-217, 3556-3, 4-2390, 7-0152	Washer - Flat 5/16 SAE	2	<b>0.13</b>	

All original equipment manufacturers names and part numbers are used for identification purposes only, and we are in no way implying that our products are original equipment parts. Prices subject to change without notice.



# Replaces Toro Reelmaster 3555-D Parts

*Traction Unit*

*Control Panel, Hyd Valve & Parking Brake*



Item No	R&R Part No.	OEM Part No.	Description	Qty Req	Price Each	Order Quantity
74	<b>R301504</b>	2296-42, 301504, 32127-24, 32128-33, 32146-17, 3296-16, 3296-42, 3296-42 , 915661P	Locknut - ESNA 1/4-20	1	<b>0.18</b>	
75	<b>R3272-10</b>	01-151-0120, 105-7512, 3272-10, N/A	Pin - Cotter 1/8 x 3/4	1	<b>0.13</b>	
76	<b>R94-3829</b>	94-3829	Pin - Clevis	1	<b>2.55</b>	
77	<b>R1023-4</b>	01-151-0150, 1023-4, 19-6220, 214-14, 215-54, 28-9-D, 3272-4, 3272-6, 513567, 932008P	Pin - Cotter 3/32 x 3/4	1	<b>0.23</b>	
78	<b>R400118</b>	321-10, 400118	Bolt - Hex HD 1/4-20 x 1-3/4 GR5	1	<b>0.87</b>	
79	<b>R87-4710</b>	87-4710	Spacer - Parking Brake	1	<b>3.95</b>	
80	<b>R95-8763</b>	95-8763	Bracket - Hold Down	2	<b>8.95</b>	
81	<b>R58-4250</b>	58-4250, 99-3497	Catch - Magnetic	2	<b>25.80</b>	
82	<b>R3269-5</b>	3269-5	Rivet - Pop	4	<b>0.64</b>	
83	<b>R3290-134</b>	3290-134	Screw - 10-24x5/8 Hh Ms	2	<b>0.29</b>	
84	<b>R104-0421</b>	104-0421	Plate - Throttle Stop	1	<b>8.15</b>	
85	<b>R3290-148</b>	3290-148	Nut - 10-24 Fl Lock	2	<b>0.36</b>	

All original equipment manufacturers names and part numbers are used for identification purposes only, and we are in no way implying that our products are original equipment parts. Prices subject to change without notice.



# Replaces Toro Reelmaster 3555-D Parts

*Traction Unit*

*Control Panel, Hyd Valve & Parking Brake*



Item No	R&R Part No.	OEM Part No.	Description	Qty Req	Price Each	Order Quantity
86	<b>R110-8795</b>	110-8759, 110-8795	Cable - Throttle	1	<b>29.65</b>	
87	<b>R32144-10</b>	32140-81, 32144-10, 32144-3, 34-140-AMVD	Bolt - 1/4-20 x 3/4 Serrated Hx Wshr	4	<b>2.85</b>	
88	<b>R95-8765</b>	95-8765	Bracket - Magnet Strike	2	<b>6.05</b>	
89	<b>R32144-18</b>	32144-18	Screw - Hex HD	2	<b>1.90</b>	
90	<b>R93-5961</b>	93-5961	Dust Guard - Shifter	1	<b>30.95</b>	
91	<b>R233-42</b>	1-603175, 120-9752, 233-42, 233-47	Knob	1	<b>6.80</b>	
92	<b>R3296-29</b>	1-804256, 3290-357, 3296-29, 915662P	Locknut - 5/16-18 ESNA	1	<b>2.95</b>	
93	<b>R112-9181</b>	106-4188-03, 112-9181	Plate-Boot	1	<b>2.95</b>	
94	<b>R115-5357-03</b>	115-5357-03	Bracket - Joystick	1	<b>22.10</b>	
95	<b>R106-4193</b>	106-4193	Washer - Finger, Spr	2	<b>3.45</b>	
96	<b>R93-5547</b>	93-5547	Bushing-Nylon	2	<b>4.70</b>	
97	<b>R105-8289</b>	105-8289, 93-5509	Spring-Torsion	1	<b>9.55</b>	
98	<b>R106-4192</b>	106-4192	Spacer	1	<b>4.55</b>	

All original equipment manufacturers names and part numbers are used for identification purposes only, and we are in no way implying that our products are original equipment parts. Prices subject to change without notice.



# Replaces Toro Reelmaster 3555-D Parts

*Traction Unit*

*Control Panel, Hyd Valve & Parking Brake*



Item No	R&R Part No.	OEM Part No.	Description	Qty Req	Price Each	Order Quantity
99	<b>R453011</b>	01-166-0100, 01-166-0120, 01-166-0270, 01-166-0500, 01-166-0600, 01-166-0620, 132-4593, 2356-3, 237-12, 24-10-AD, 24-11-AD, 24-11-BD, 24-12-AD, 24-12-BD, 30-9310, 32-8190, 3256-24, 3256-3, 3256-36, 3256-4, 453011, 47-9950, 48-9220, 513458, 7-0052	Washer - Flat 3/8 SAE Y/Zinc	1	<b>0.11</b>	
100	<b>R19H3130</b>	322-9, 3223-5	Bolt - Hex HD 5/16-18 x 1-3/4	1	<b>0.84</b>	
101	<b>R3258-166</b>	3258-166	Screw-Ph Rnd HD	2	<b>0.24</b>	

All original equipment manufacturers names and part numbers are used for identification purposes only, and we are in no way implying that our products are original equipment parts. Prices subject to change without notice.