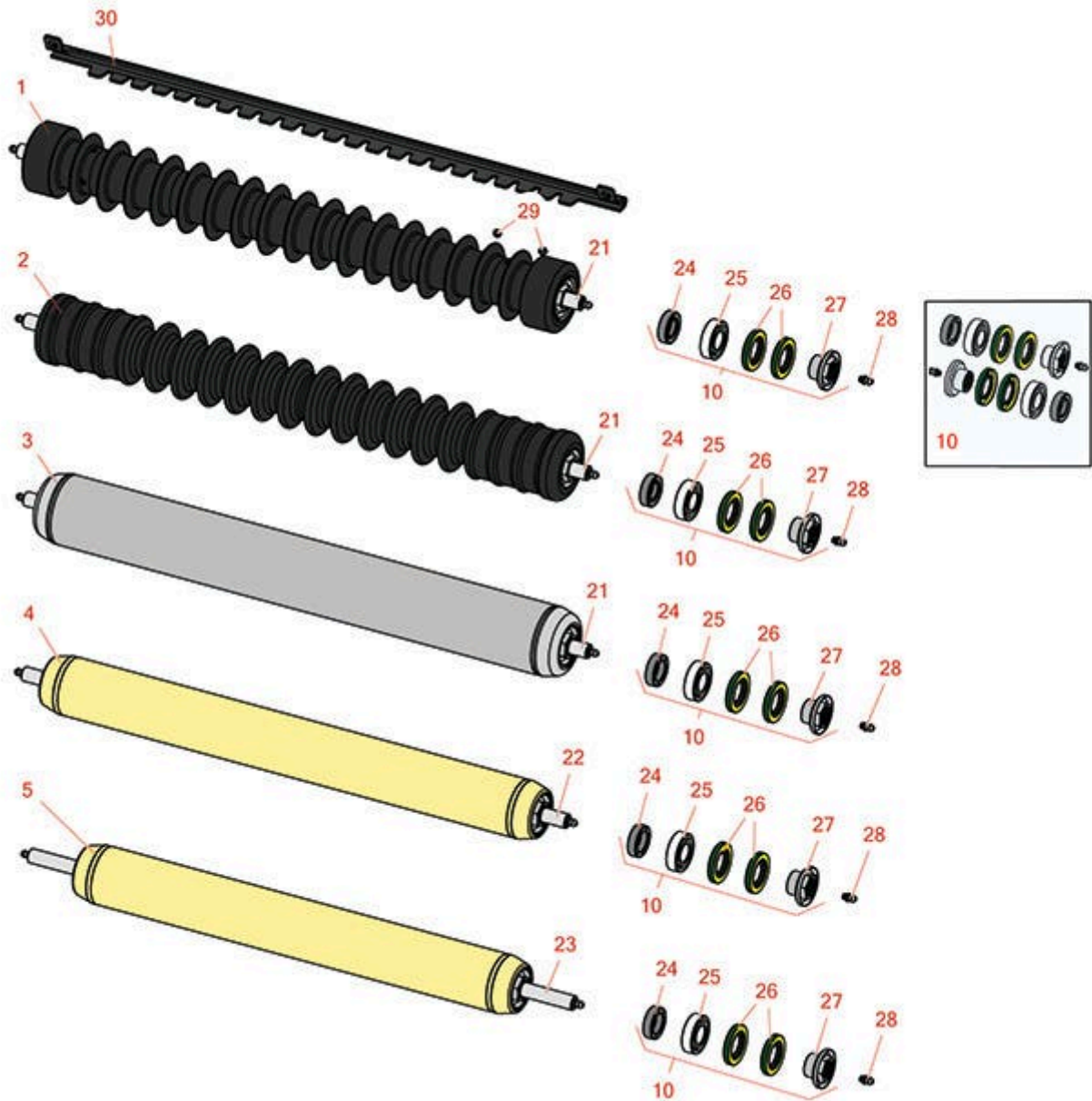




Replaces Toro Reelmaster 3555-D Parts

22in Cutting Unit - Model 03483, 03487 & 03488
Rollers



All original equipment manufacturers names and part numbers are used for identification purposes only, and we are in no way implying that our products are original equipment parts. Prices subject to change without notice.



Replaces Toro Reelmaster 3555-D Parts

22in Cutting Unit - Model 03483, 03487 & 03488
Rollers



| Item No | R&R Part No. | OEM Part No. | Description | Qty Req | Price Each | Order Quantity |
|---------|--------------|--------------|-------------|---------|------------|----------------|
|---------|--------------|--------------|-------------|---------|------------|----------------|

R&R Rollers Available

| | | | | | | |
|---|-----------------|------------------------------------|--|---|---------------|--|
| 1 | R1503911 | 110-4050, 114-5400, 114-5421 | Roller - Fusion Grooved UHMW Polyethylene | 0 | 330.90 | |
|---|-----------------|------------------------------------|--|---|---------------|--|

Tech Note: Fusion Rollers combine the best features of our UHMW plastic rollers with a heavy-duty internal bearing system. Machined from solid UHMW plastic that prevents build-up of debris. This roller has a patented deep groove design and ... <Click Part# for more>:

| | | | | | | |
|---|-----------------|-----------------------|--|---|---------------|--|
| 2 | R1503915 | 110-9608, 114-5421 | Roller - Fusion Grooved UHMW Polyethylene Shoulder | 0 | 330.90 | |
|---|-----------------|-----------------------|--|---|---------------|--|

Tech Note: Fusion Rollers combine the best features of our UHMW plastic rollers with a heavy-duty internal bearing system. Machined from solid UHMW plastic that prevents build-up of debris. This roller has a patented deep groove design in t... <Click Part# for more>:

| | | | | | | |
|---|------------------|----------|----------------------------------|---|---------------|--|
| 3 | R114-5412 | 114-5412 | Roller - Smooth Tubular Steel | 0 | 256.10 | |
|---|------------------|----------|----------------------------------|---|---------------|--|

Tech Note: Constructed with a through shaft, this heavy-duty roller uses greasable stainless ball bearings. (2008 & Up):

| | | | | | | |
|---|------------------|-----------------------|---|---|---------------|--|
| 4 | R114-5404 | 114-5404, 137-6107 | Roller - Smooth Tubular Steel - Long | 0 | 171.05 | |
|---|------------------|-----------------------|---|---|---------------|--|

Tech Note: Constructed with a through shaft, this heavy-duty roller uses greasable stainless ball bearings. (2006 - 2007):

| | | | | | | |
|---|------------------|----------|--|---|---------------|--|
| 5 | R114-5406 | 114-5406 | Roller - Smooth Tubular Steel - Short | 0 | 252.85 | |
|---|------------------|----------|--|---|---------------|--|

Tech Note: Constructed with a through shaft, this heavy-duty roller uses greasable stainless ball bearings. (2008 & Up):

Overhaul Kits

| | | | | | | |
|----|------------------|----------|-----------------------|---|--------------|--|
| 10 | R114-5430 | 114-5430 | Overhaul Kit - Roller | 0 | 82.40 | |
|----|------------------|----------|-----------------------|---|--------------|--|

Tech Note: Includes 4 ea.: R112-7494 Seals; 2 ea.: R302-5 Grease Zerks, R114-3717 Seals, R112-5290 Bearings & R114-3745 Locknuts:

Other Parts Available

All original equipment manufacturers names and part numbers are used for identification purposes only, and we are in no way implying that our products are original equipment parts. Prices subject to change without notice.



Replaces Toro Reelmaster 3555-D Parts

22in Cutting Unit - Model 03483, 03487 & 03488
Rollers



| Item No | R&R Part No. | OEM Part No. | Description | Qty Req | Price Each | Order Quantity |
|---------|---------------------|--|---|---------|--------------|----------------|
| 21 | R114-5403 | 114-5403 | Shaft - Front Roller | 1 | 49.60 | |
| 22 | R114-5407 | 114-5407 | Shaft - Long Rear Roller | 1 | 58.75 | |
| 23 | R114-5410 | 114-5410 | Shaft - Short - Rear Roller | 1 | 58.75 | |
| 24 | R114-3717 | 114-3717 | Seal | 2 | 2.35 | |
| 25 | R112-5290 | 112-5290, 251--346, 251-346, 72-5430 | Bearing - Stainless | 2 | 10.30 | |
| 26 | R112-7494 | 112-7494 | Seal | 4 | 5.15 | |
| 27 | R114-3745 | 114-3745, 114-5411 | Locknut - Bearing - Stainless | 2 | 19.15 | |
| 28 | R302-5 | 21-6010, 302-11, 302-37, 302-47, 302-5, 302-57, 302-58, 302-6, 31-0300, 32-9660, 60-0800, 62-3880, 92-4181 | Fitting - Grease | 2 | 0.27 | |
| 29 | R300106 | 300106 | Screw - Set 5/16-18 x 1/4 | 4 | 0.32 | |
| 30 | R107-2993-03 | 107-2993-03 | Scraper - Fits Toro Plastic Gr Roller Only | 1 | 26.85 | |

All original equipment manufacturers names and part numbers are used for identification purposes only, and we are in no way implying that our products are original equipment parts. Prices subject to change without notice.